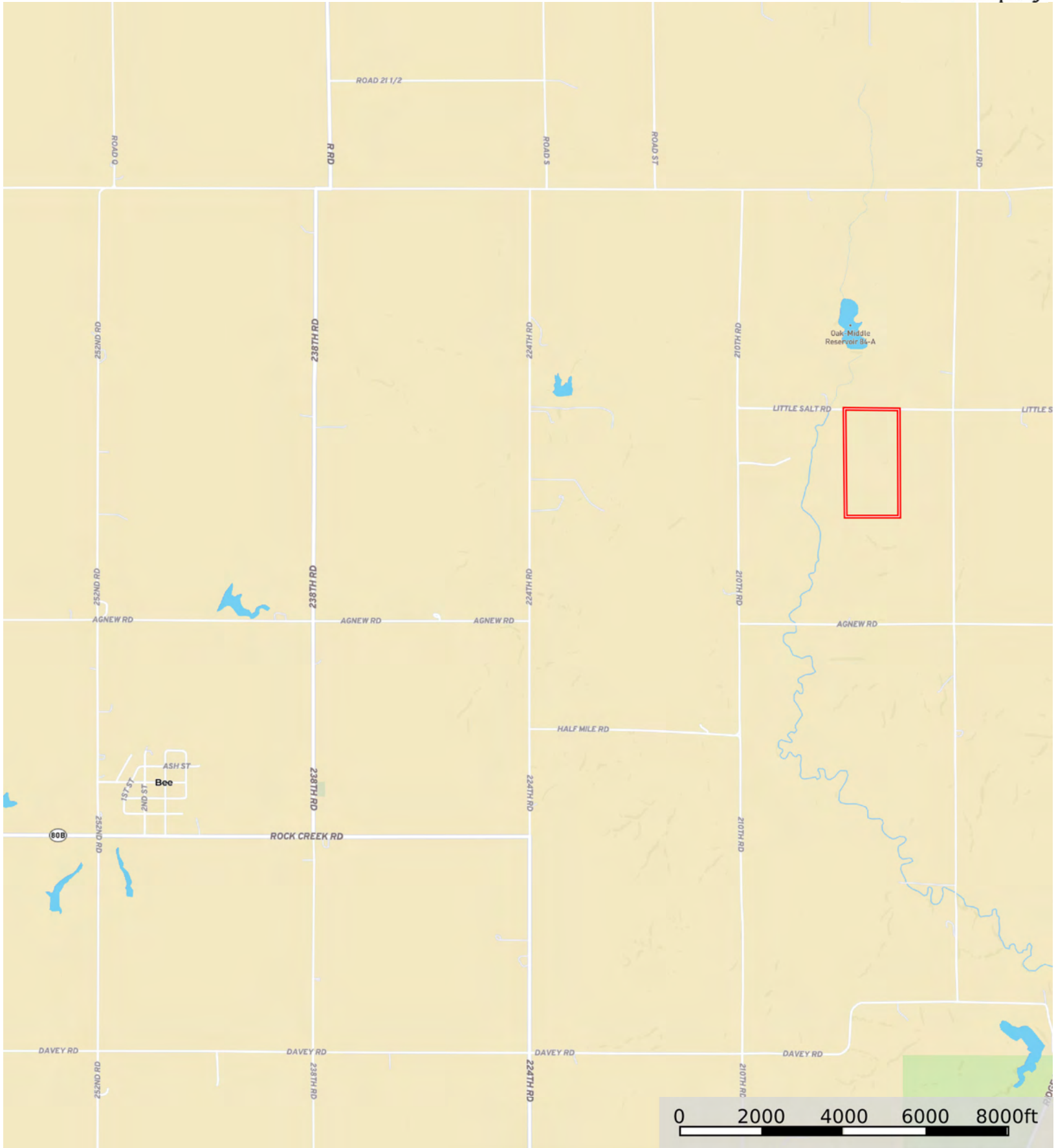


L-2400446

Seward County, Nebraska, 80 AC +/-



Boundary



The information contained herein was obtained from sources deemed to be reliable. Land id™ Services makes no warranties or guarantees as to the completeness or accuracy thereof.



Boundary



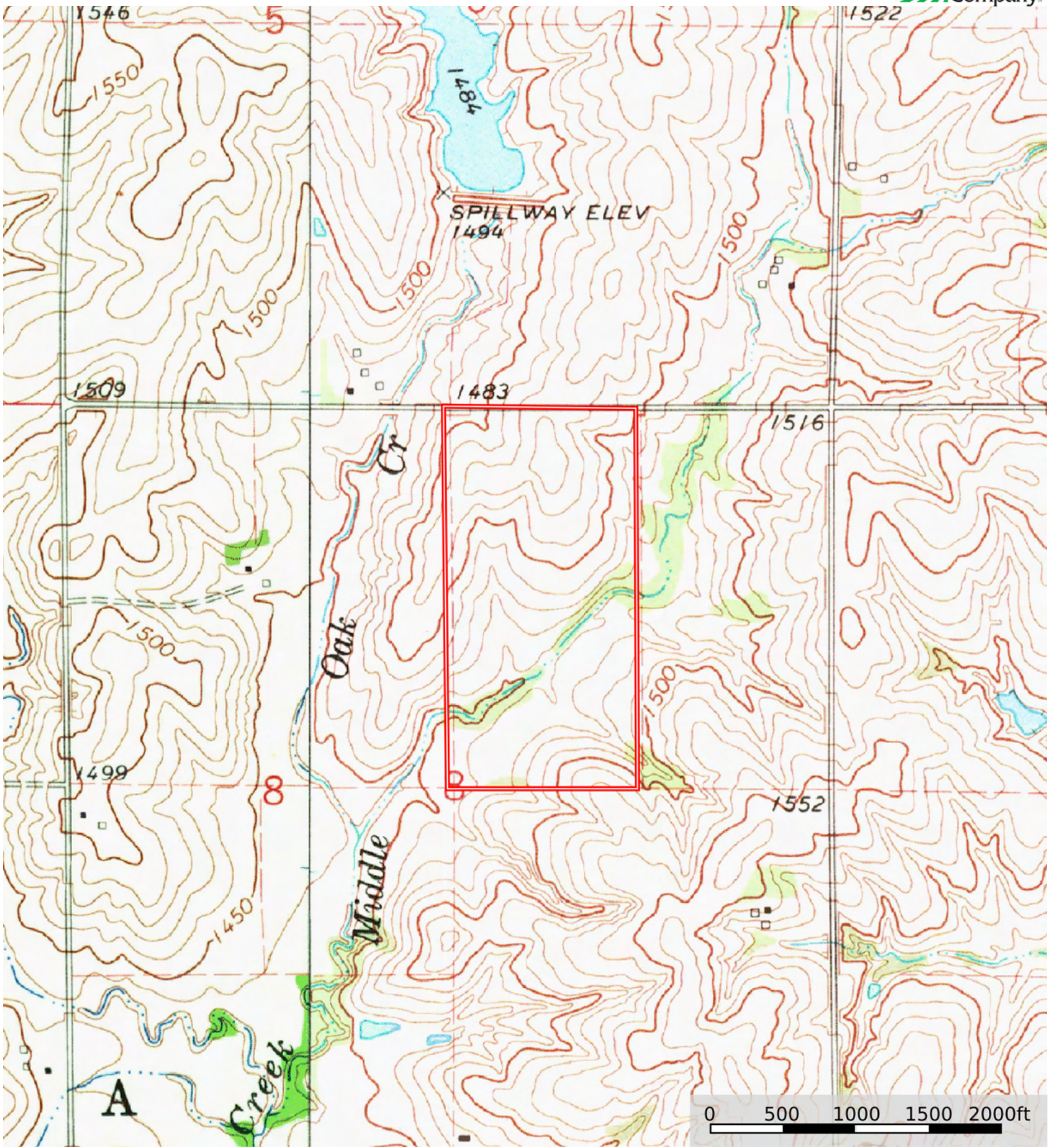
Boundary

| Boundary 79.57 ac

SOIL CODE	SOIL DESCRIPTION	ACRES	%	CPI	NCCPI	CAP
7228	Burchard clay loam, 6 to 11 percent slopes, eroded	24.8	31.16	0	48	3e
7204	Aksarben silty clay loam, 6 to 11 percent slopes, eroded	11.47	14.41	0	62	3e
3777	Muir silt loam, 3 to 7 percent slopes	11.04	13.87	0	80	3e
8841	Hall silt loam, 1 to 3 percent slopes	9.76	12.26	0	75	2e
7501	Pawnee clay loam, 4 to 8 percent slopes, eroded	9.22	11.59	0	44	3e
3553	Hobbs silt loam, frequently flooded	7.04	8.85	0	54	6w
7641	Yutan silty clay loam, 2 to 6 percent slopes, eroded	4.31	5.42	0	59	2e
7614	Steinauer clay loam, 6 to 11 percent slopes, eroded	1.93	2.43	0	62	4e
TOTALS		79.57(*)	100%	-	58.77	3.11

(\*) Total acres may differ in the second decimal compared to the sum of each acreage soil. This is due to a round error because we only show the acres of each soil with two decimal.





Boundary