

L-2400449

Charles Mix County, South Dakota, 137.49 AC +/-



Boundary

L-2400449

Charles Mix County, South Dakota, 137.49 AC +/-



Boundary



The information contained herein was obtained from sources deemed to be reliable. Land id™ Services makes no warranties or guarantees as to the completeness or accuracy thereof.

L-2400449

Charles Mix County, South Dakota, 137.49 AC +/-



Boundary



The information contained herein was obtained from sources deemed to be reliable. Land id™ Services makes no warranties or guarantees as to the completeness or accuracy thereof.

| Boundary 58.96 ac

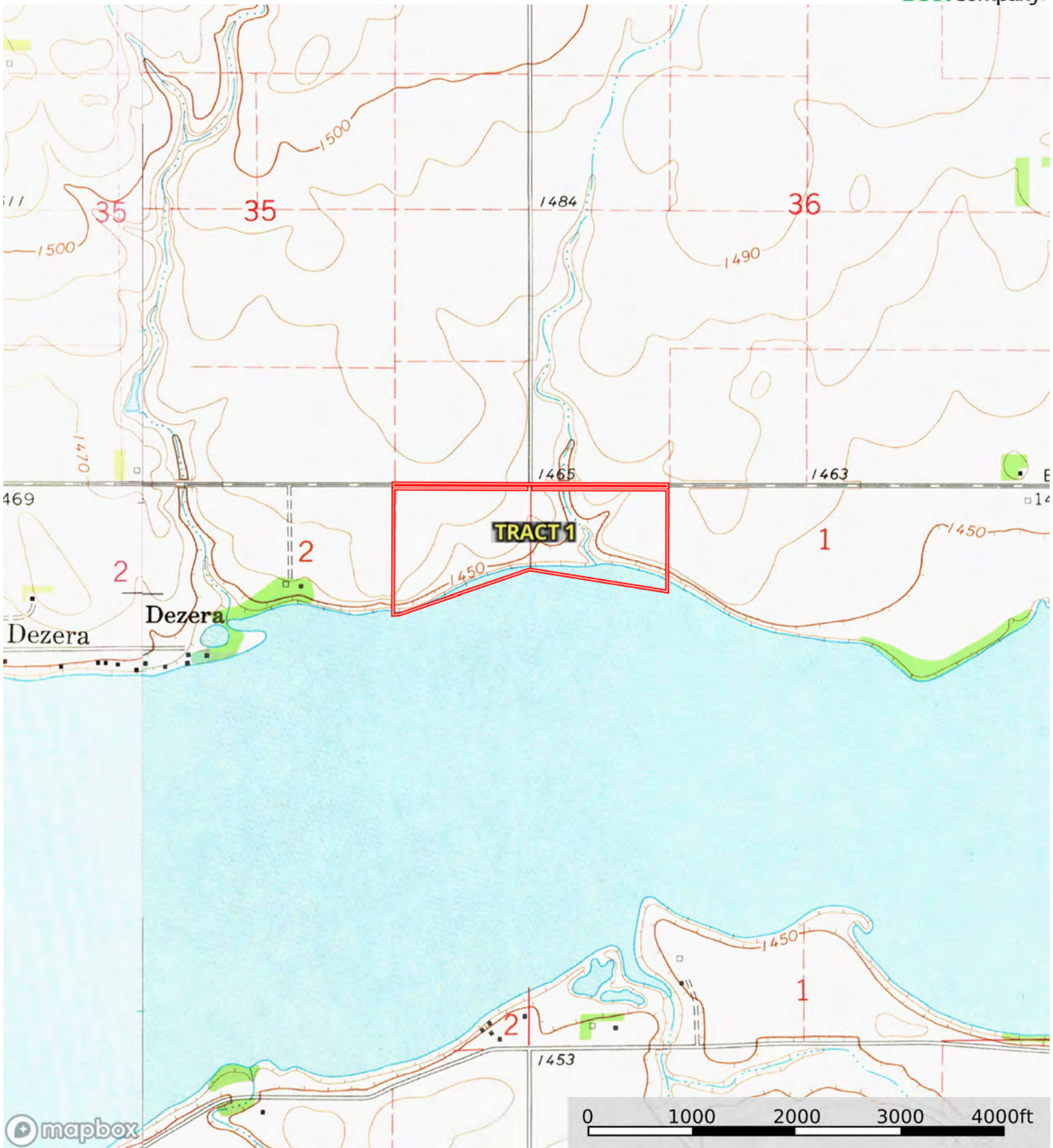
SOIL CODE	SOIL DESCRIPTION	ACRES	%	CPI	NCCPI	CAP
HgA	Highmore silt loam, 0 to 2 percent slopes	25.34	42.98	92	59	2c
BeE	Ethan-Betts loams, 9 to 15 percent slopes	18.05	30.61	31	57	6e
HhB	Highmore silt loam, 2 to 6 percent slopes	8.41	14.26	91	58	2e
Wp	Worthing silty clay loam, ponded, 0 to 1 percent slopes	3.87	6.56	10	6	8w
EeB	Eakin-Ethan complex, 2 to 6 percent slopes	3.29	5.58	76	64	2e
TOTALS		58.96(*)	100%	66.91	55.05	3.62

(*) Total acres may differ in the second decimal compared to the sum of each acreage soil. This is due to a round error because we only show the acres of each soil with two decimal.



L-2400449

Charles Mix County, South Dakota, 137.49 AC +/-



Boundary



The information contained herein was obtained from sources deemed to be reliable. Land id™ Services makes no warranties or guarantees as to the completeness or accuracy thereof.

L-2400449

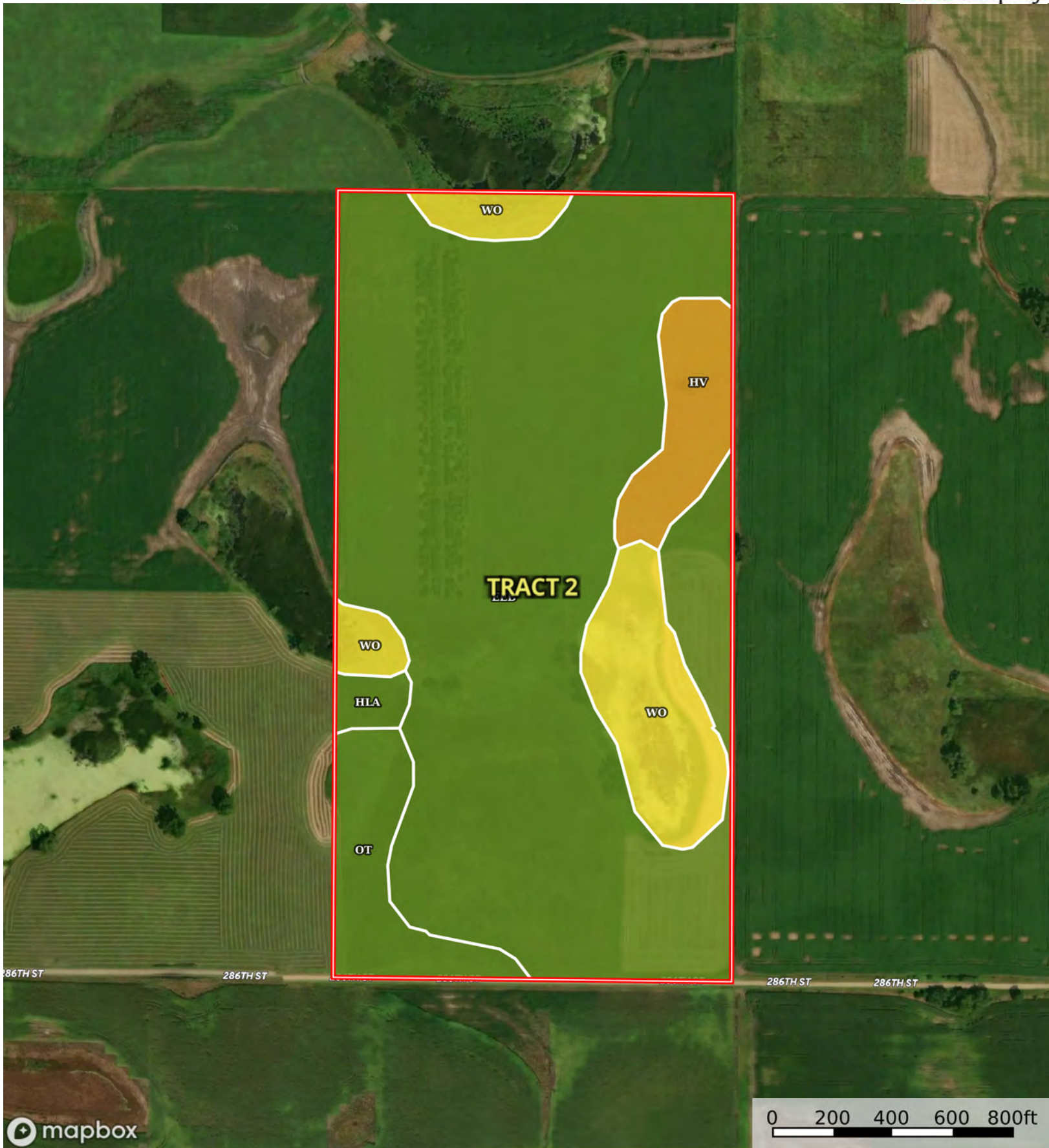
Charles Mix County, South Dakota, 137.49 AC +/-



Boundary

L-2400449

Charles Mix County, South Dakota, 137.49 AC +/-



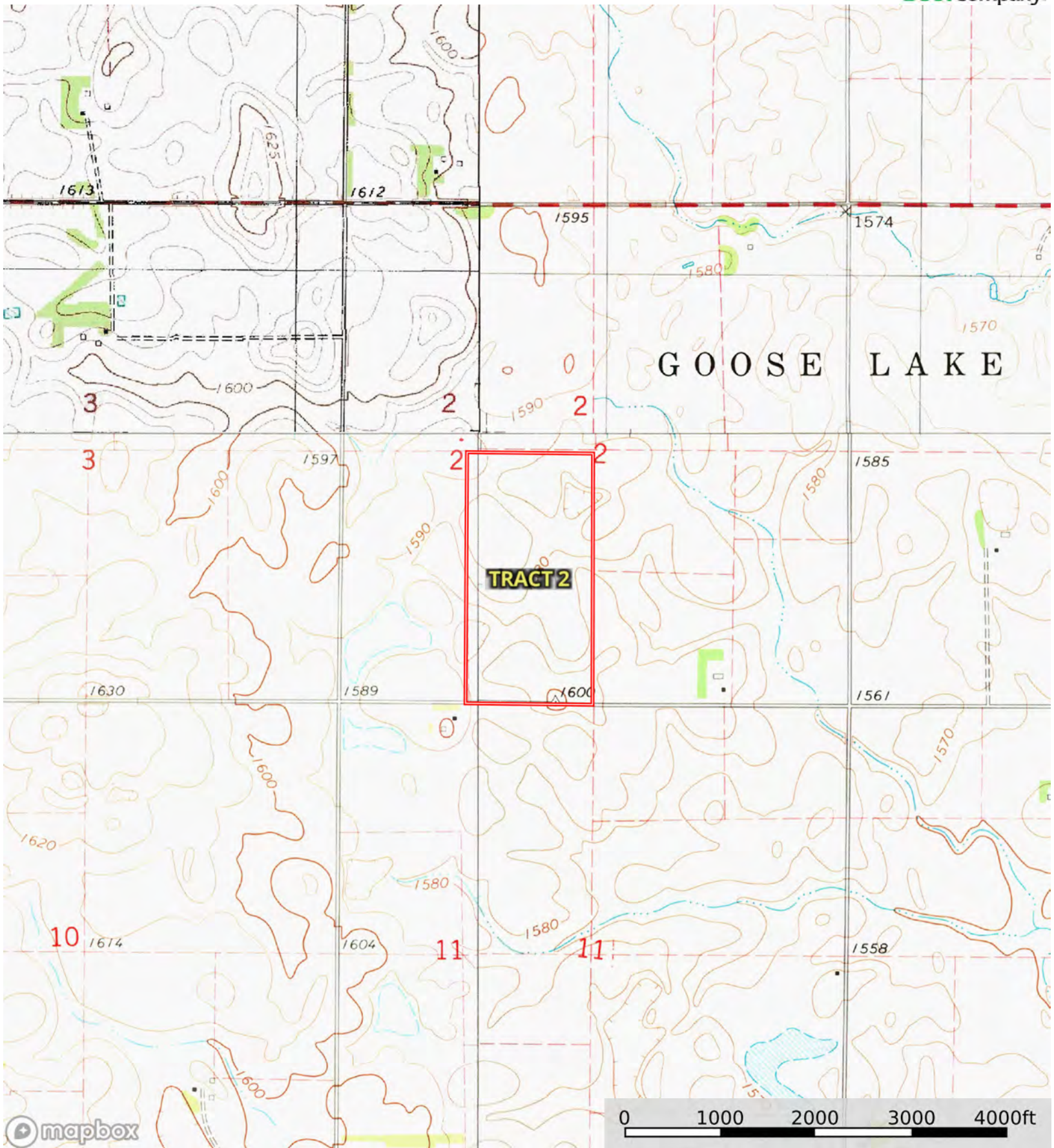
Boundary

| Boundary 80.42 ac

SOIL CODE	SOIL DESCRIPTION	ACRES	%	CPI	NCCPI	CAP
EeB	Eakin-Ethan complex, 2 to 6 percent slopes	60.18	74.84	76	64	2e
Wo	Worthing silty clay loam, 0 to 1 percent slopes	9.37	11.65	31	14	5w
Ot	Onita-Tetonka silt loams	5.44	6.77	86	46	2c
Hv	Hoven silt loam, 0 to 1 percent slopes	4.41	5.48	15	7	6s
HIA	Highmore-Walke silt loams, 0 to 2 percent slopes	1.02	1.27	86	64	2c
TOTALS		80.42(*)	100%	68.22	53.84	2.57

(*) Total acres may differ in the second decimal compared to the sum of each acreage soil. This is due to a round error because we only show the acres of each soil with two decimal.





Boundary

