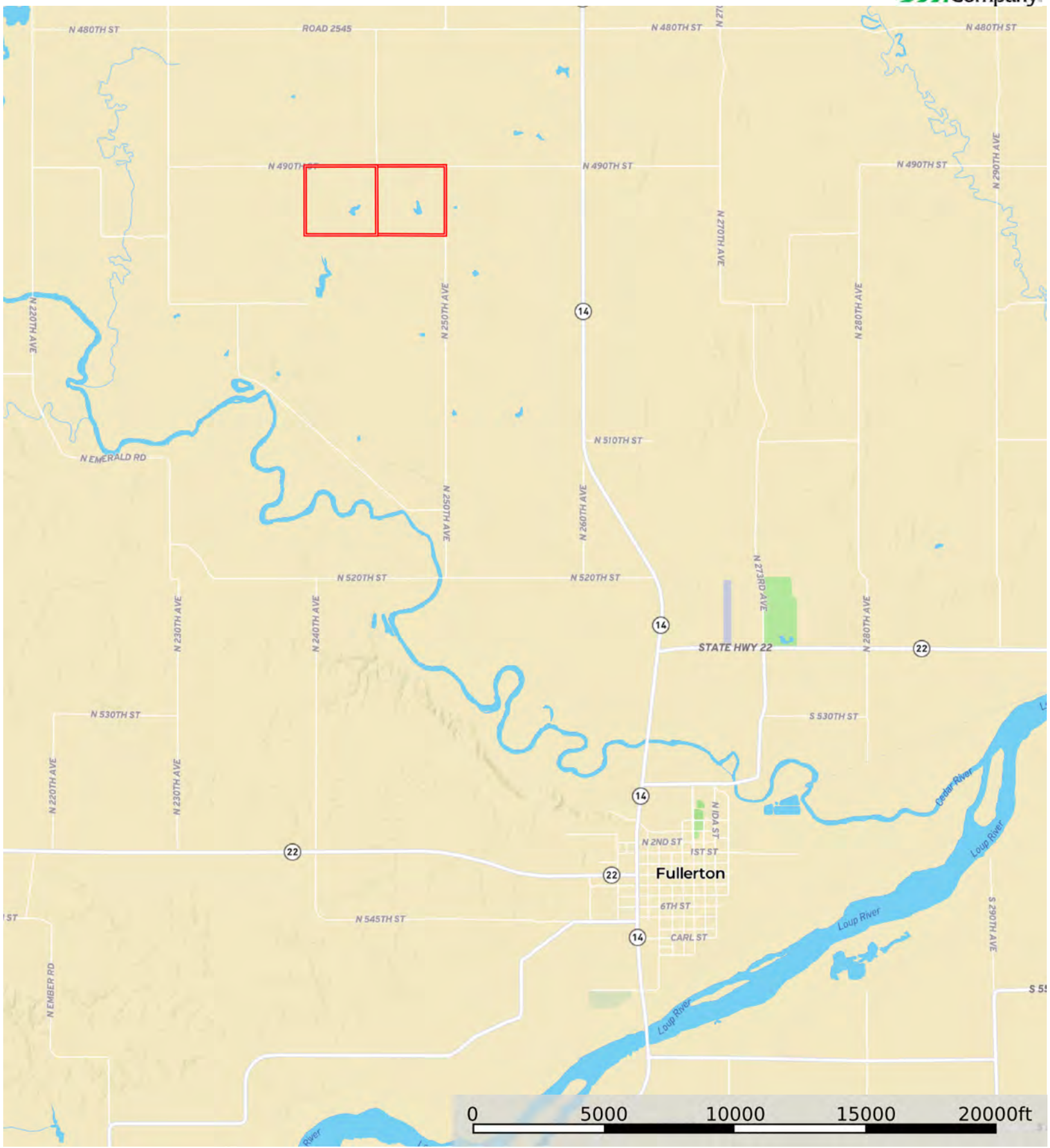
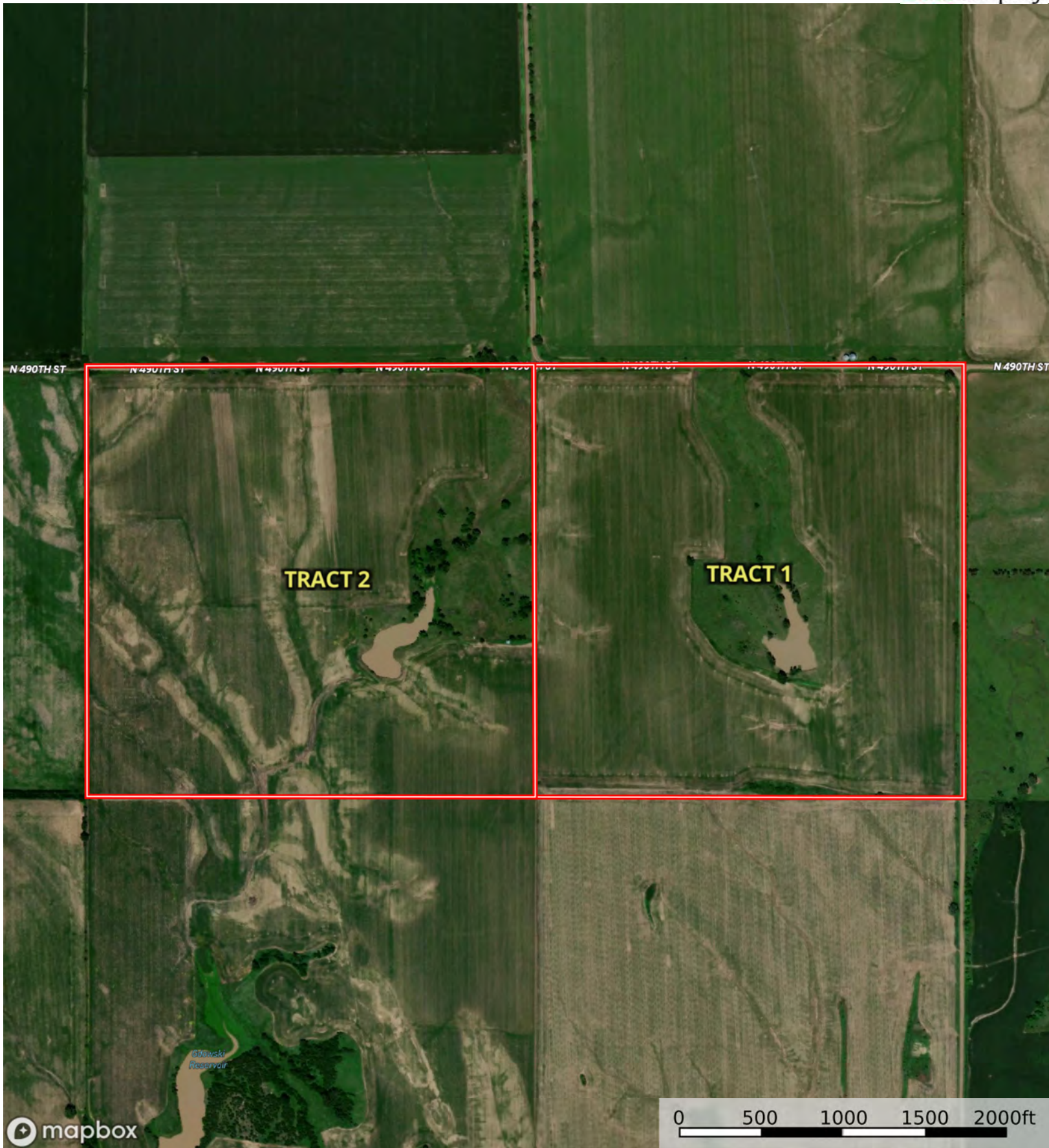


L-2400461

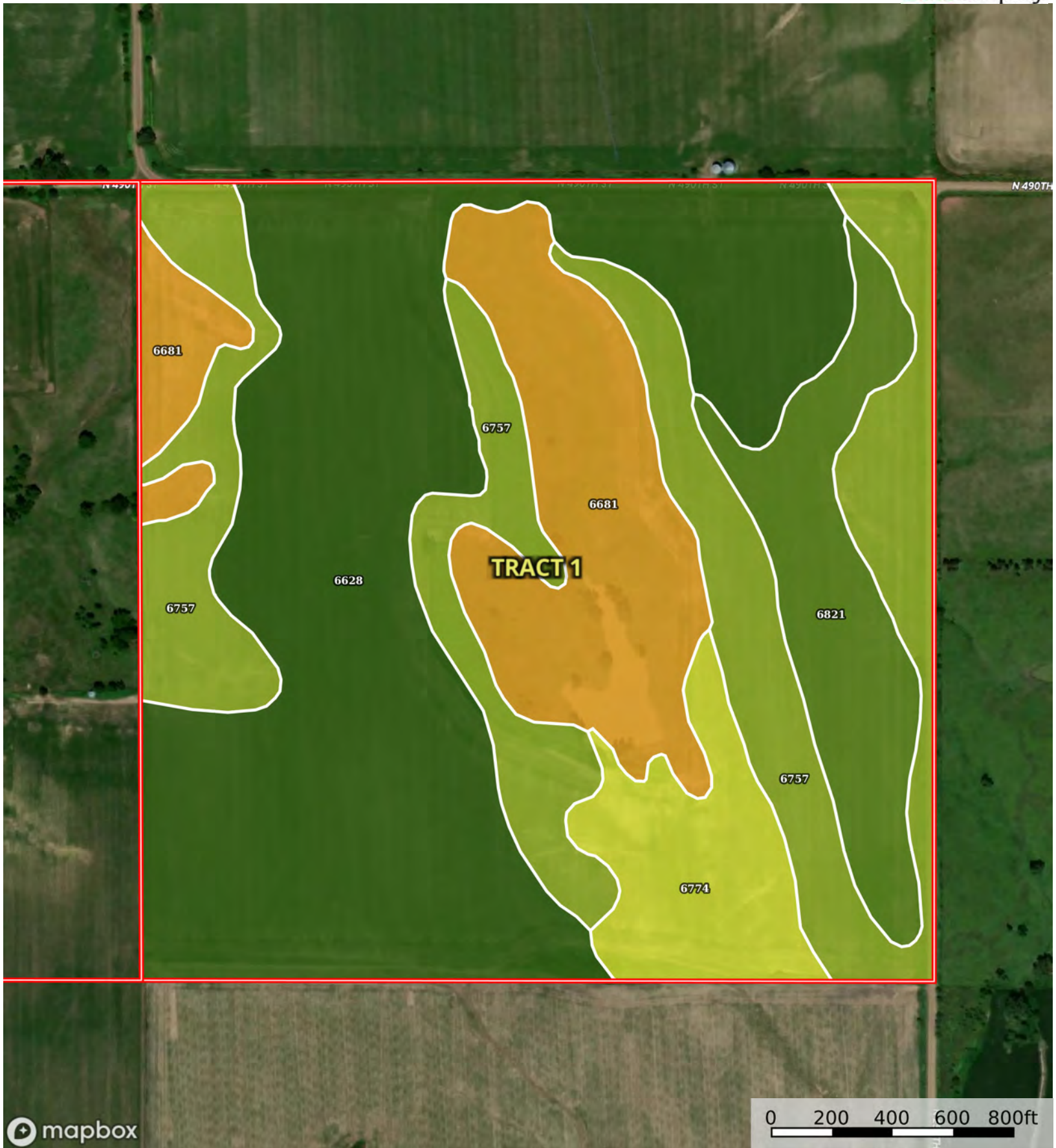
Nance County, Nebraska, 320 AC +/-



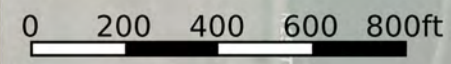
Boundary



Boundary



Boundary



| Boundary 160.03 ac

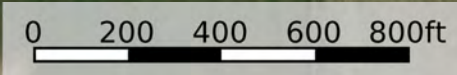
SOIL CODE	SOIL DESCRIPTION	ACRES	%	CPI	NCCPI	CAP
6628	Belfore silty clay loam, 0 to 2 percent slopes	66.76	41.72	0	81	1
6757	Nora silt loam, 6 to 11 percent slopes, severely eroded	40.29	25.18	0	53	3e
6681	Crofton silt loam, 17 to 30 percent slopes, eroded	26.18	16.36	0	37	6e
6821	Moody-Nora silt loams, 3 to 6 percent slopes, eroded	15.13	9.45	0	64	2e
6774	Nora-Crofton complex, 11 to 17 percent slopes, eroded	11.67	7.29	50	60	4e
TOTALS		160.0 3(*)	100%	3.65	63.61	2.63

(*) Total acres may differ in the second decimal compared to the sum of each acreage soil. This is due to a round error because we only show the acres of each soil with two decimal.





Boundary



| Boundary 166.19 ac

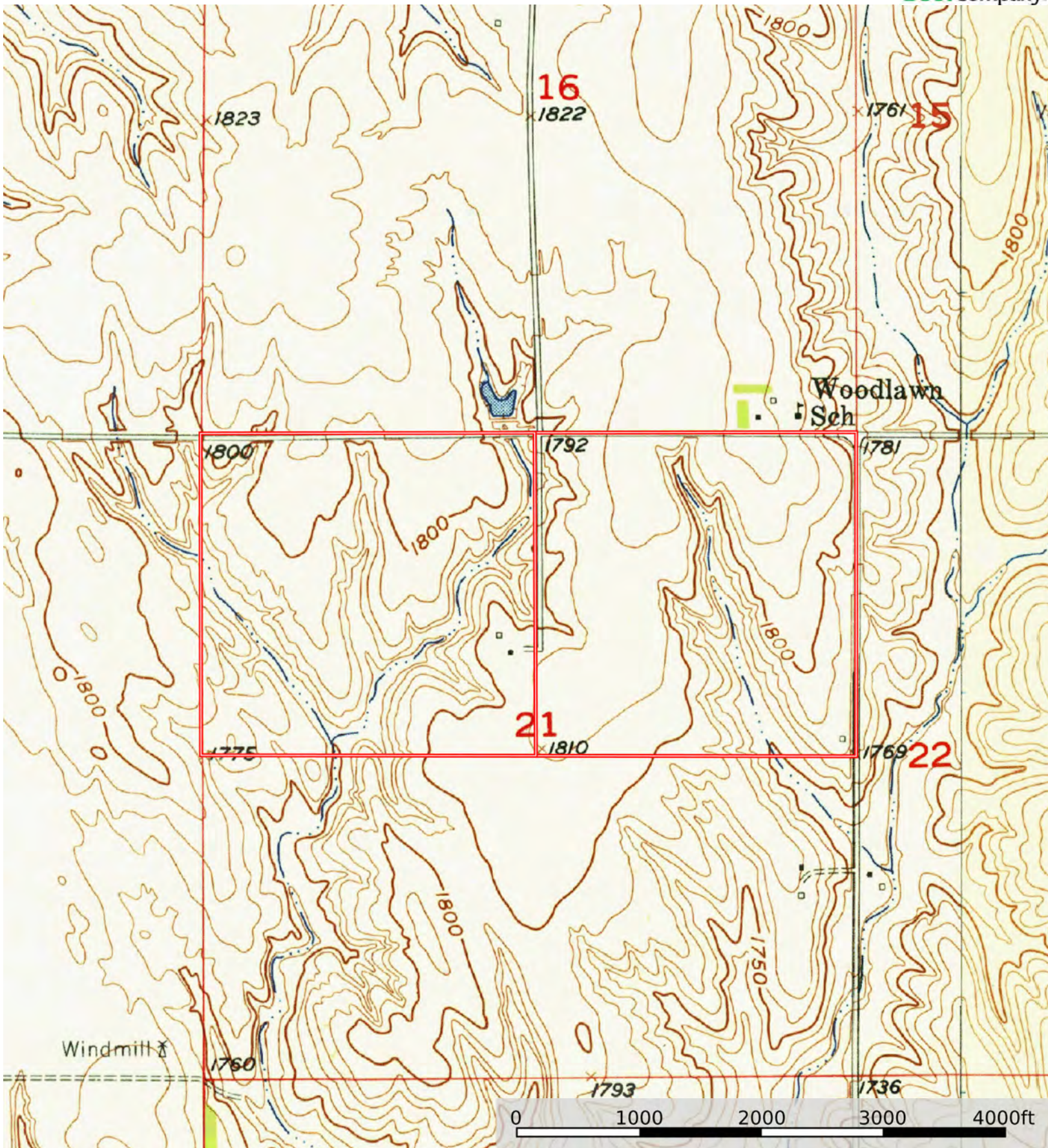
SOIL CODE	SOIL DESCRIPTION	ACRES	%	CPI	NCCPI	CAP
6681	Crofton silt loam, 17 to 30 percent slopes, eroded	68.95	41.49	0	37	6e
6628	Belfore silty clay loam, 0 to 2 percent slopes	45.66	27.47	0	81	1
6757	Nora silt loam, 6 to 11 percent slopes, severely eroded	28.04	16.87	0	53	3e
6816	Loretto-Thurman complex, 3 to 6 percent slopes	11.81	7.11	0	60	3e
6687	Crofton silt loam, 6 to 11 percent slopes, eroded	7.34	4.42	0	67	4e
6767	Nora silty clay loam, 6 to 11 percent slopes	3.73	2.24	0	75	3e
6704	Thurman loamy fine sand, 2 to 6 percent slopes, eroded	0.53	0.32	0	36	4e
6772	Nora-Ortello complex, 6 to 11 percent slopes, eroded	0.07	0.04	0	54	3e
4790	Valentine fine sand, 3 to 17 percent slopes, eroded	0.06	0.04	0	20	6e
TOTALS		166.19(*)	100%	-	55.6	3.74

(*) Total acres may differ in the second decimal compared to the sum of each acreage soil. This is due to a round error because we only show the acres of each soil with two decimal.



L-2400461

Nance County, Nebraska, 320 AC +/-



Boundary



The information contained herein was obtained from sources deemed to be reliable. Land id™ Services makes no warranties or guarantees as to the completeness or accuracy thereof.