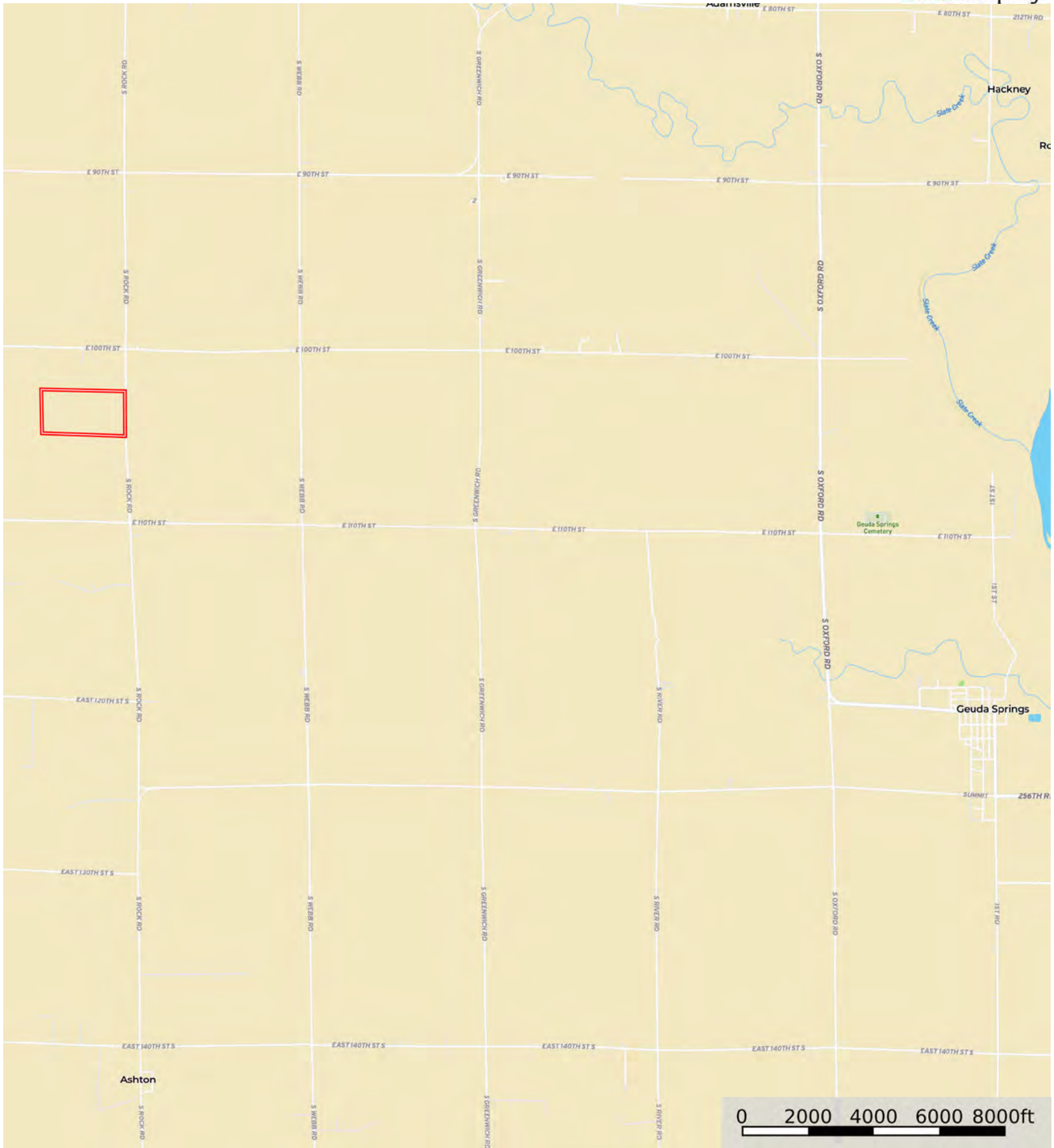


L-2400462

Sumner County, Kansas, 78.9 AC +/-



Boundary



The information contained herein was obtained from sources deemed to be reliable. Land id™ Services makes no warranties or guarantees as to the completeness or accuracy thereof.



Boundary

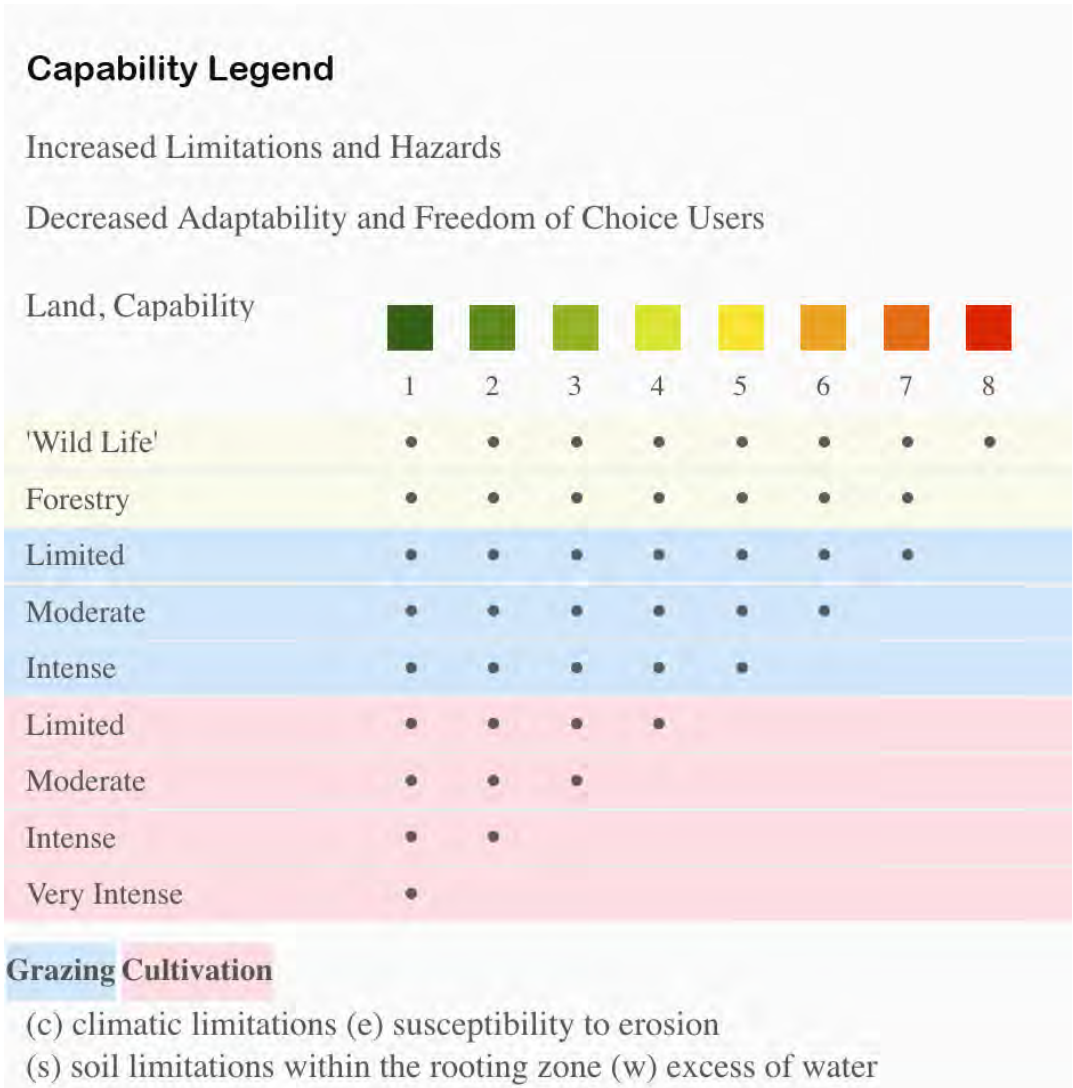


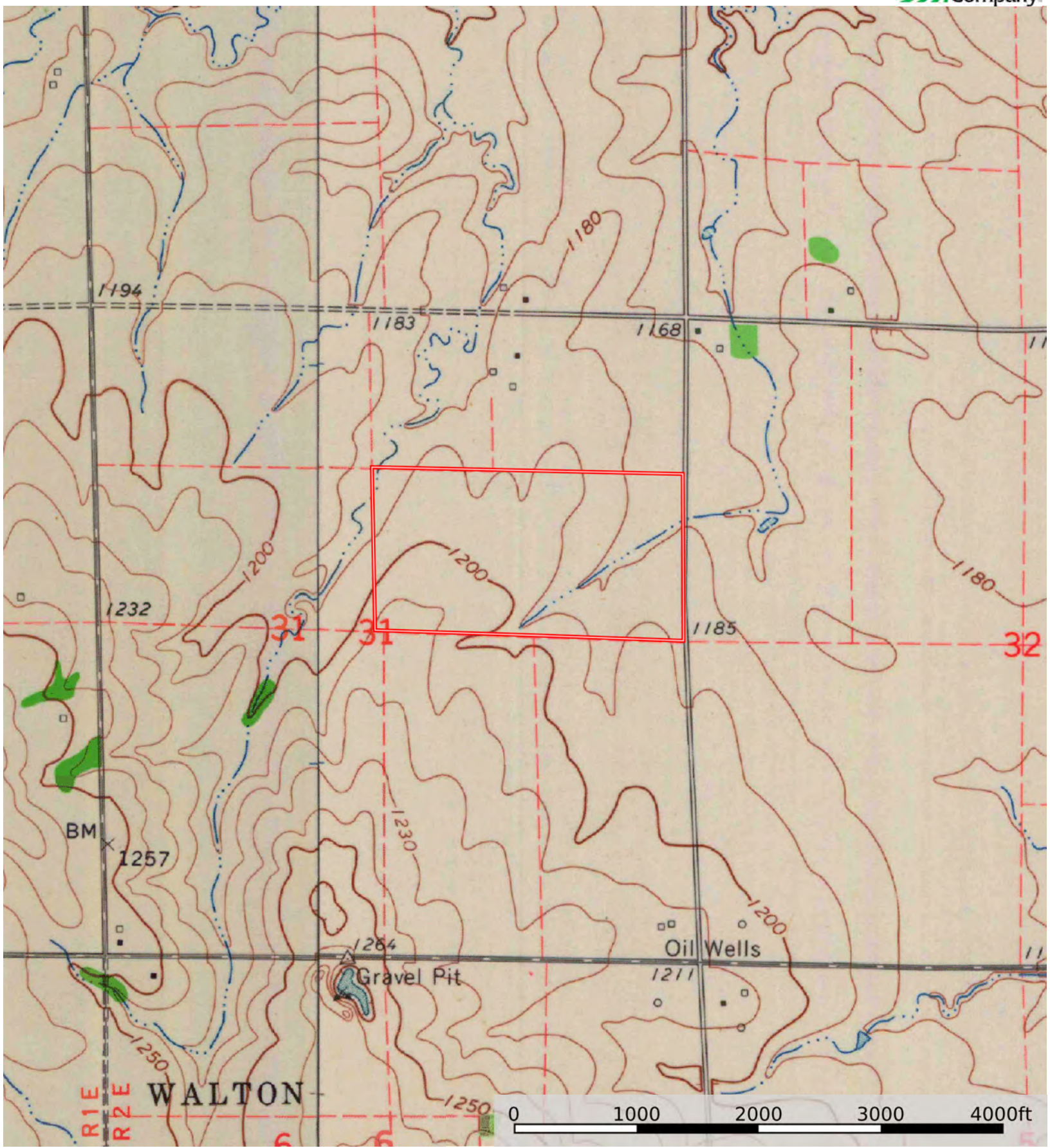
Boundary

| Boundary 78.89 ac

SOIL CODE	SOIL DESCRIPTION	ACRES	%	CPI	NCCPI	CAP
6320	Bethany silt loam, 0 to 1 percent slopes	37.34	47.33	0	54	2s
5893	Farnum loam, 1 to 3 percent slopes	20.41	25.87	0	64	2c
6321	Bethany silt loam, 1 to 3 percent slopes	19.21	24.35	0	57	2e
6051	Elandco silt loam, frequently flooded	1.28	1.62	0	50	5w
6369	Milan loam, 1 to 3 percent slopes	0.65	0.82	0	73	2e
TOTALS		78.89(*)	100%	-	57.41	2.05

(*) Total acres may differ in the second decimal compared to the sum of each acreage soil. This is due to a round error because we only show the acres of each soil with two decimal.





Boundary