

**Common Land Unit**  
  Tract Boundary  
  PLSS  
  Non-Cropland  
  Cropland

2022 NAIP Ortho Imagery

2024 Program Year  
 Map Created March 14, 2024

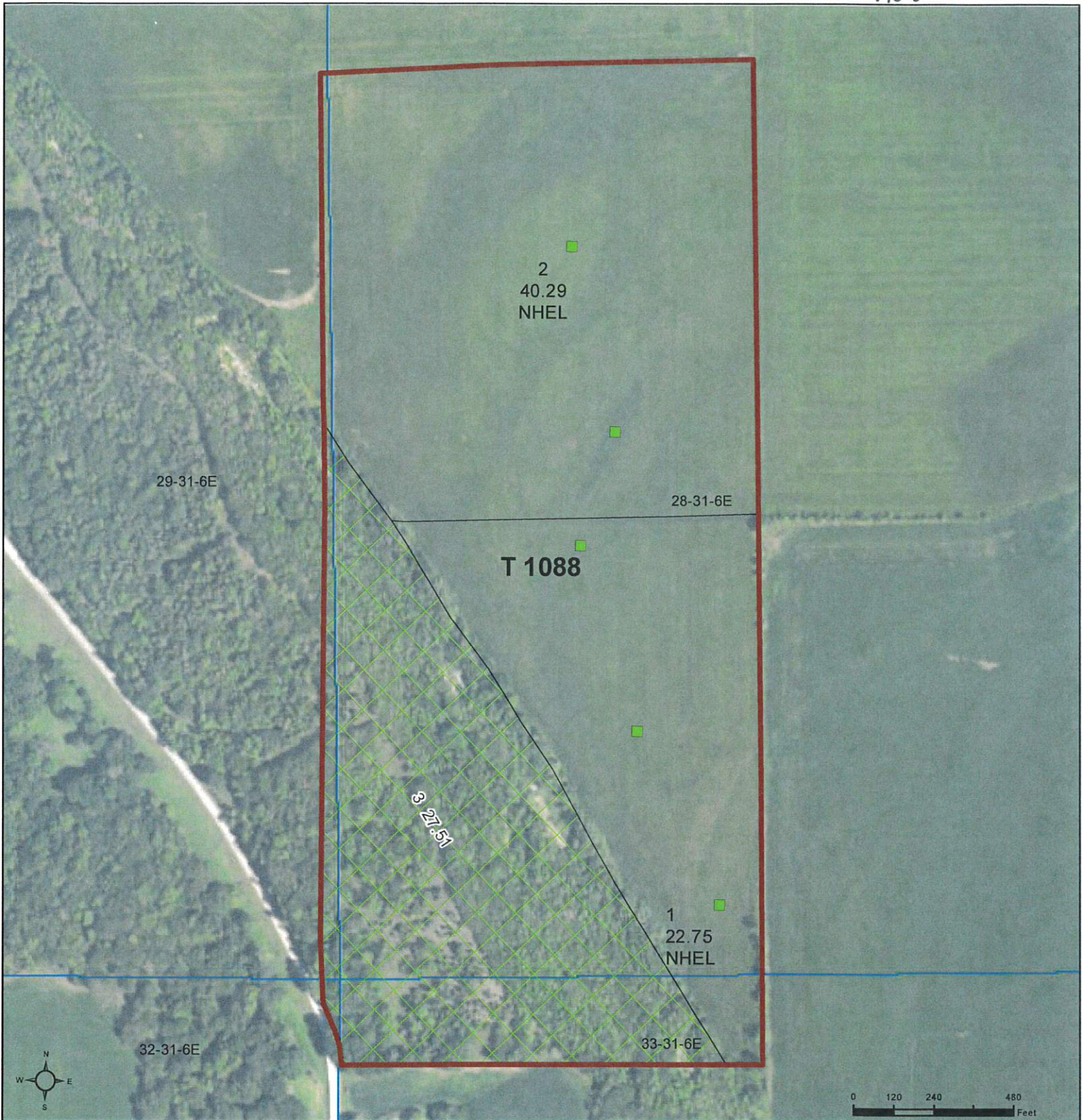
**Farm 3363**  
**Tract 1087**

**Wetland Determination Identifiers**  
● Restricted Use  
▼ Limited Restrictions  
■ Exempt from Wetland Provisions

**Tract Cropland Total: 145.66 acres**

United States Department of Agriculture (USDA) Farm Service Agency (FSA) maps are for FSA Program administration only. This map does not represent a legal survey or reflect actual ownership; rather it depicts the information provided directly from the producer and/or National Agricultural Imagery Program (NAIP) imagery. The producer accepts the data 'as is' and assumes all risks associated with its use. USDA-FSA assumes no responsibility for actual or consequential damage incurred as a result of any user's reliance on this data outside FSA Programs. Wetland identifiers do not represent the size, shape, or specific determination of the area. Refer to your original determination (CPA-026 and attached maps) for exact boundaries and determinations or contact USDA Natural Resources Conservation Service (NRCS).

tract 2 - 91 1/2 Acres



**Common Land Unit**  
  Tract Boundary  
  PLSS  
  Non-Cropland  
  Cropland

**Wetland Determination Identifiers**  
● Restricted Use  
▼ Limited Restrictions  
■ Exempt from Wetland Provisions

2022 NAIP Ortho Imagery

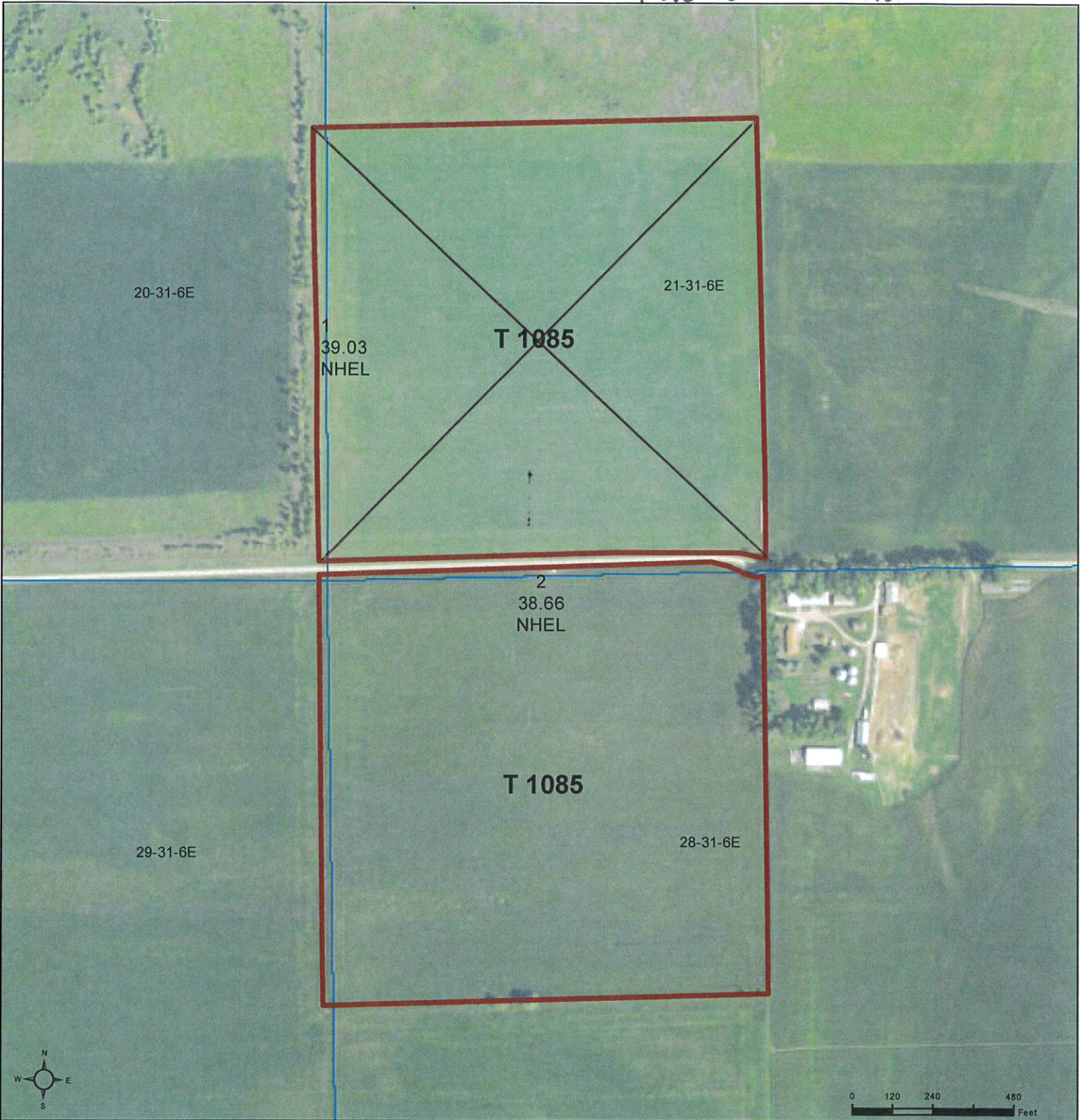
2024 Program Year  
 Map Created March 14, 2024

**Farm 3363**  
**Tract 1088**

Tract Cropland Total: 63.04 acres

United States Department of Agriculture (USDA) Farm Service Agency (FSA) maps are for FSA Program administration only. This map does not represent a legal survey or reflect actual ownership; rather it depicts the information provided directly from the producer and/or National Agricultural Imagery Program (NAIP) imagery. The producer accepts the data 'as is' and assumes all risks associated with its use. USDA-FSA assumes no responsibility for actual or consequential damage incurred as a result of any user's reliance on this data outside FSA Programs. Wetland identifiers do not represent the size, shape, or specific determination of the area. Refer to your original determination (CPA-026 and attached maps) for exact boundaries and determinations or contact USDA Natural Resources Conservation Service (NRCS).

Tract 3 - 40+/- Acres



Common Land Unit   PLSS

- Cropland
- Tract Boundary

**Wetland Determination Identifiers**

- Restricted Use
- ▼ Limited Restrictions
- Exempt from Wetland Provisions

2022 NAIP Ortho Imagery

2024 Program Year

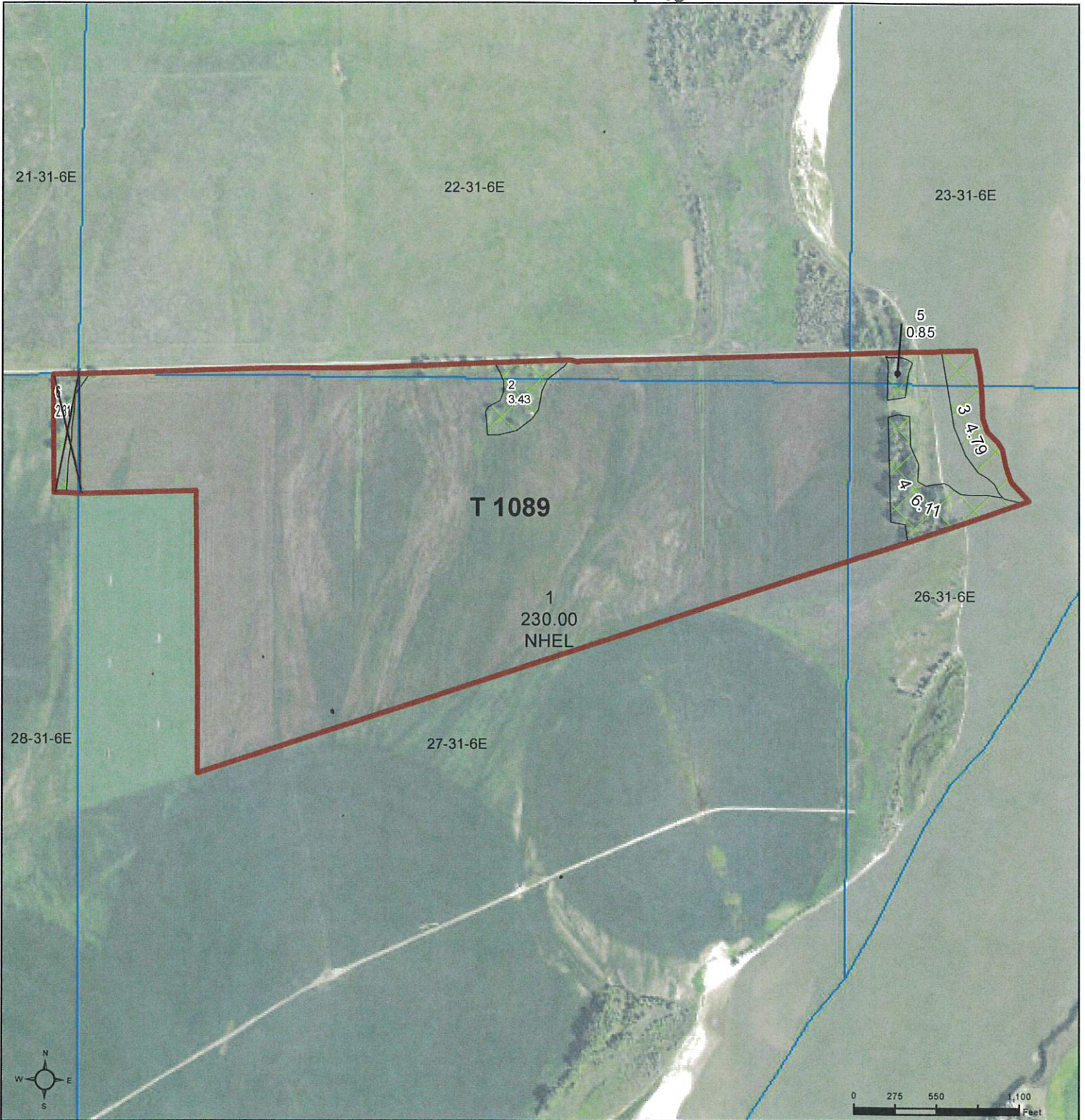
Map Created March 14, 2024

Farm 3363

Tract 1085

Tract Cropland Total: 77.69 acres

United States Department of Agriculture (USDA) Farm Service Agency (FSA) maps are for FSA Program administration only. This map does not represent a legal survey or reflect actual ownership; rather it depicts the information provided directly from the producer and/or National Agricultural Imagery Program (NAIP) imagery. The producer accepts the data 'as is' and assumes all risks associated with its use. USDA-FSA assumes no responsibility for actual or consequential damage incurred as a result of any user's reliance on this data outside FSA Programs. Wetland identifiers do not represent the size, shape, or specific determination of the area. Refer to your original determination (CPA-026 and attached maps) for exact boundaries and determinations or contact USDA Natural Resources Conservation Service (NRCS).



**Common Land Unit**  
  Tract Boundary  
  PLS  
  Non-Cropland  
  Cropland

2022 NAIP Ortho Imagery

2024 Program Year  
 Map Created March 14, 2024

**Farm 3363**  
**Tract 1089**

**Wetland Determination Identifiers**  
● Restricted Use  
▼ Limited Restrictions  
■ Exempt from Wetland Provisions

**Tract Cropland Total: 230.00 acres**

United States Department of Agriculture (USDA) Farm Service Agency (FSA) maps are for FSA Program administration only. This map does not represent a legal survey or reflect actual ownership; rather it depicts the information provided directly from the producer and/or National Agricultural Imagery Program (NAIP) imagery. The producer accepts the data 'as is' and assumes all risks associated with its use. USDA-FSA assumes no responsibility for actual or consequential damage incurred as a result of any user's reliance on this data outside FSA Programs. Wetland identifiers do not represent the size, shape, or specific determination of the area. Refer to your original determination (CPA-026 and attached maps) for exact boundaries and determinations or contact USDA Natural Resources Conservation Service (NRCS).