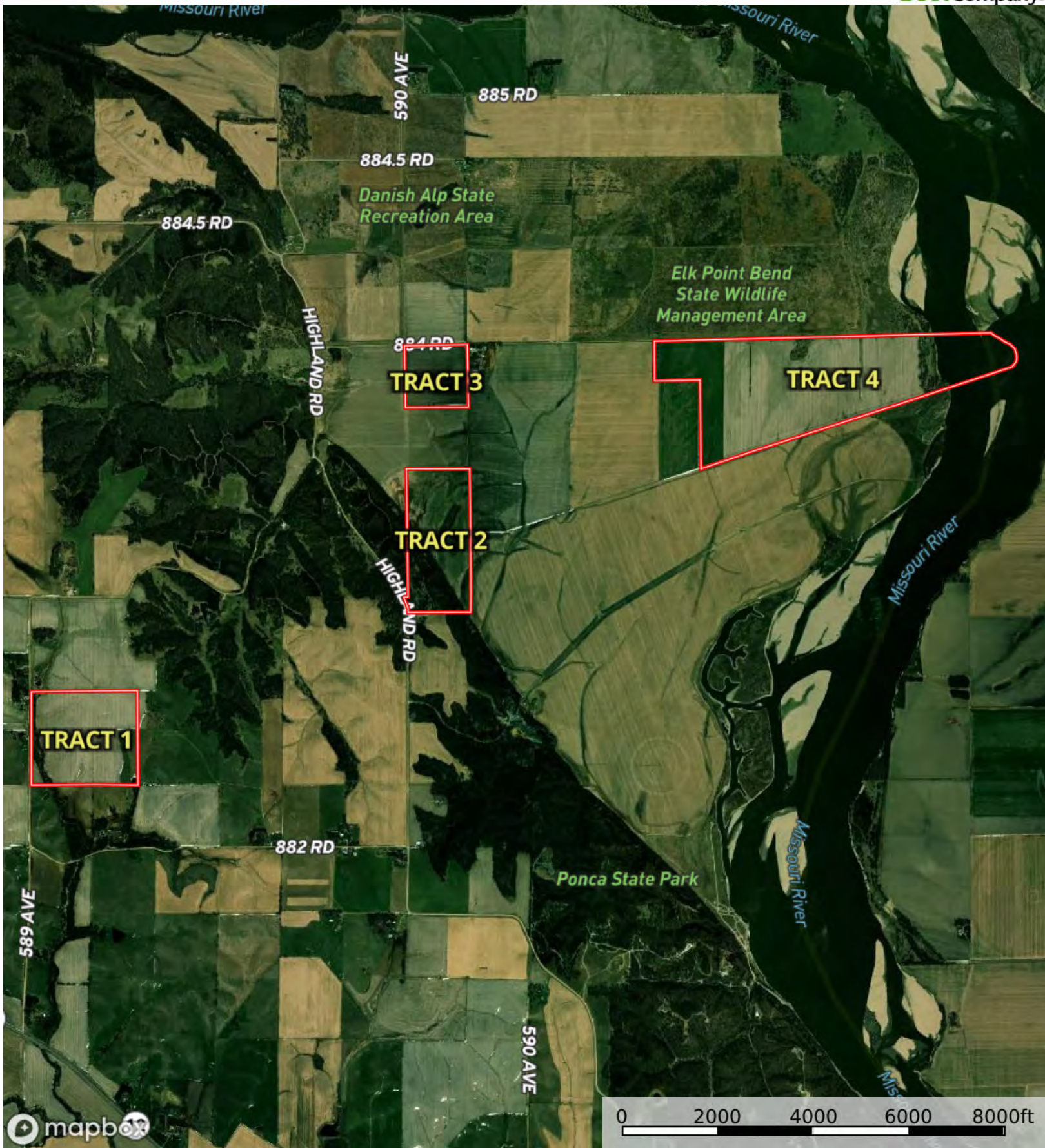


L-2400464

Dixon County, Nebraska, 507.1 AC +/-



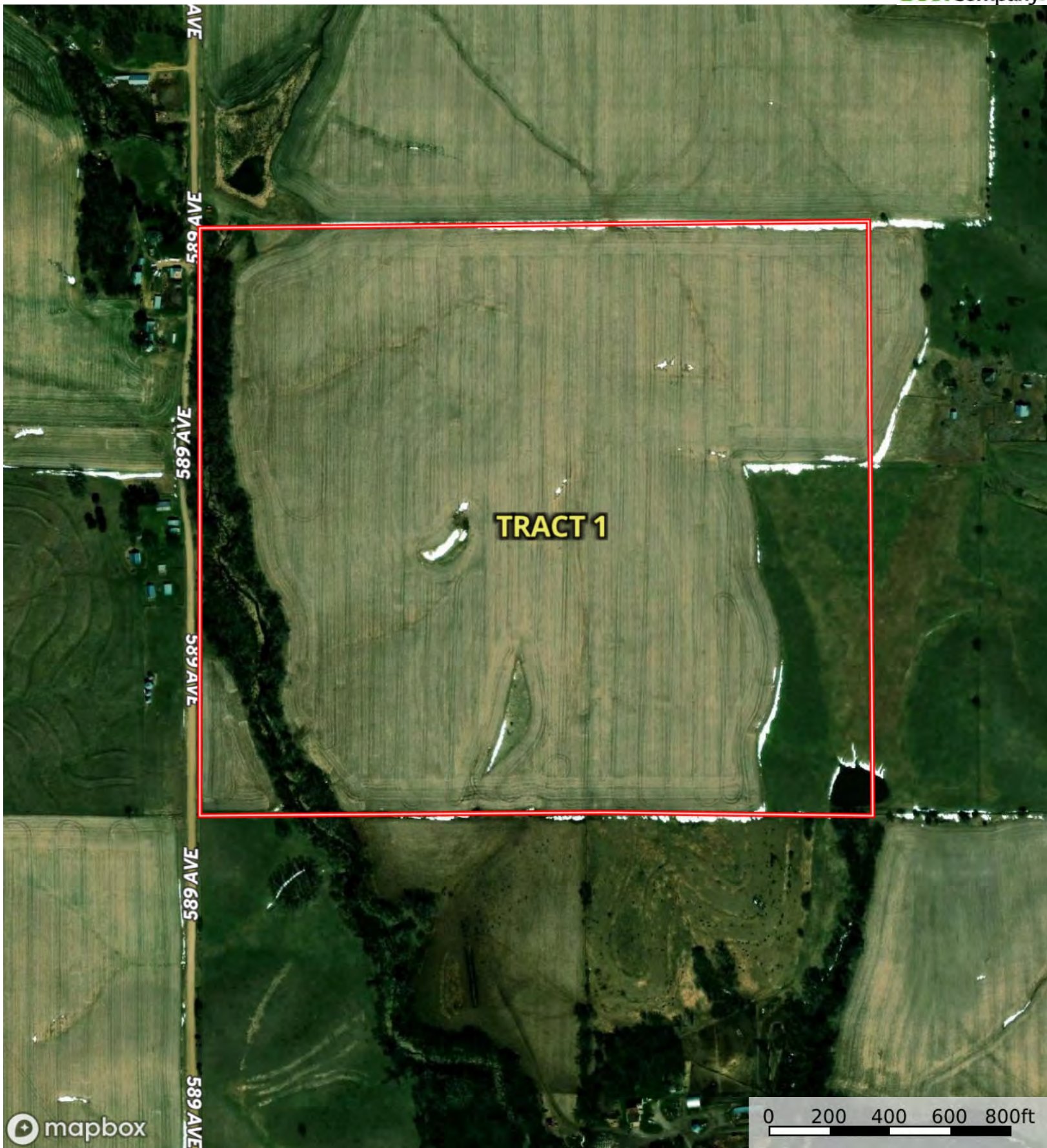
Boundary



Boundary

L-2400464

Dixon County, Nebraska, 507.1 AC +/-



Boundary

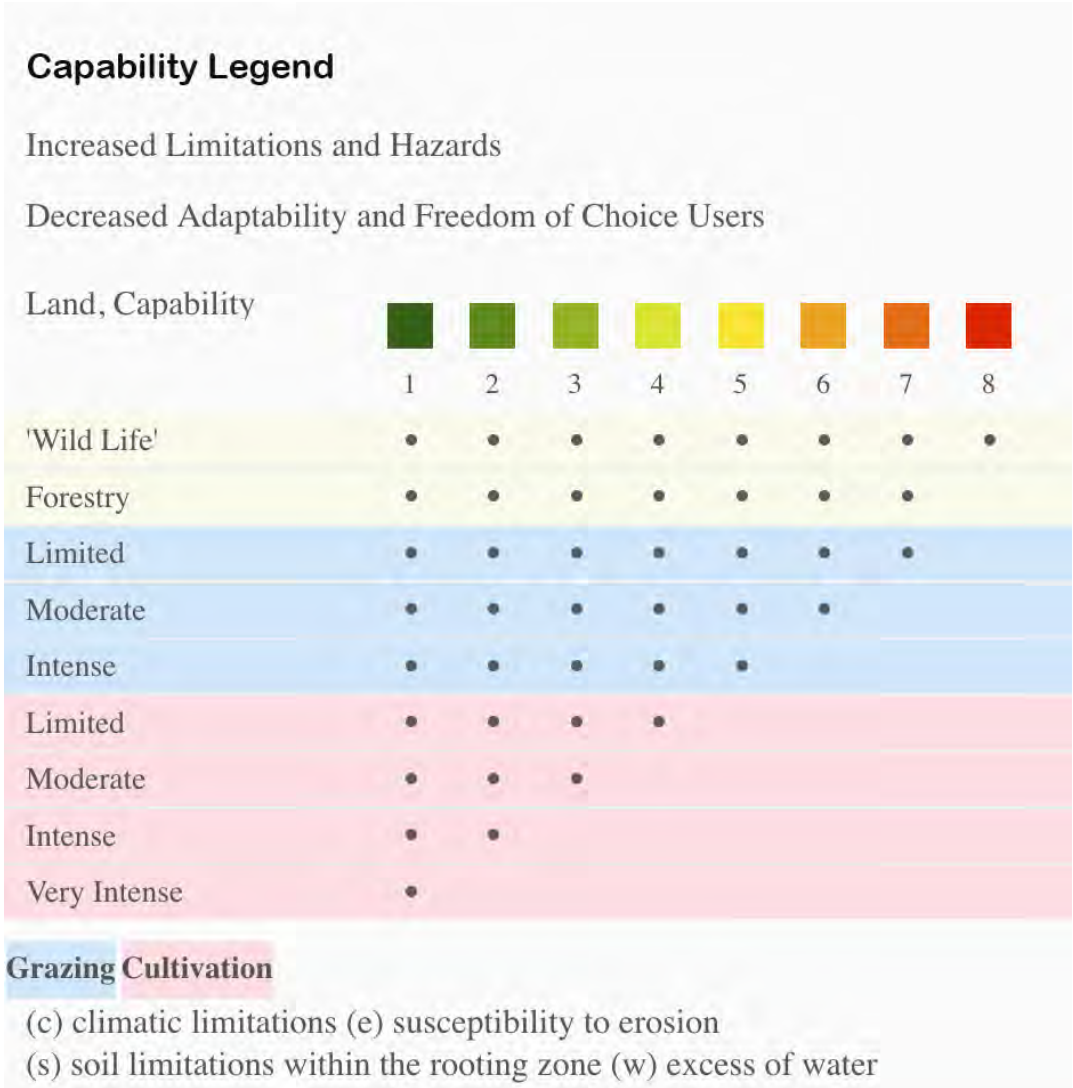


Boundary

| Boundary 100.52 ac

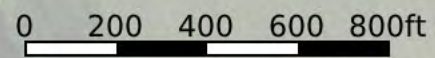
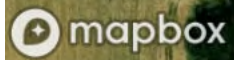
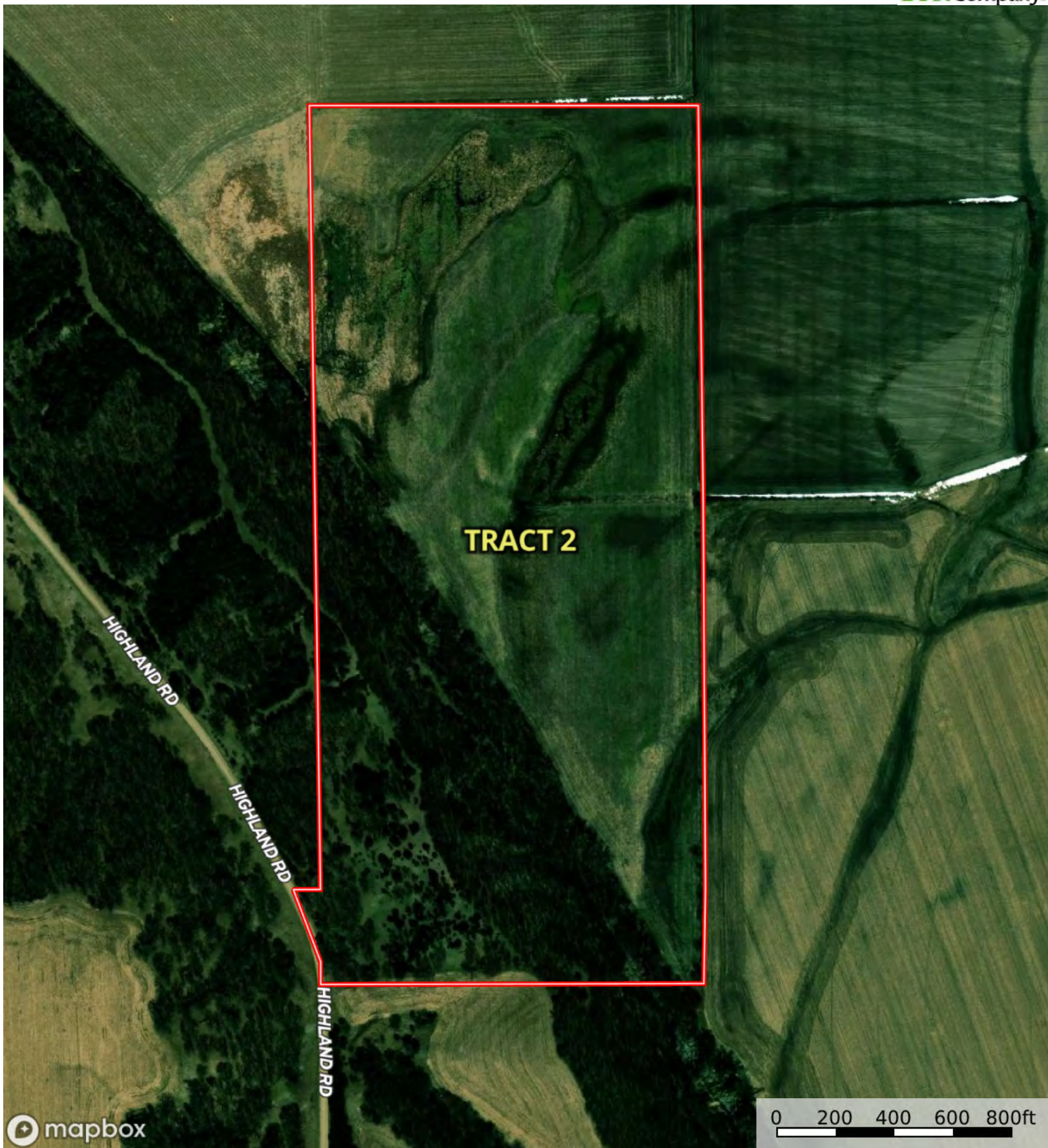
SOIL CODE	SOIL DESCRIPTION	ACRES	%	CPI	NCCPI	CAP
6749	Nora silt loam, 11 to 17 percent slopes	25.03	24.9	0	73	4e
6860	Crofton silt loam, 8 to 17 percent slopes, eroded	23.05	22.93	0	56	4e
6603	Alcester silty clay loam, 2 to 6 percent slopes	19.12	19.02	91	76	2e
6753	Nora silt loam, 2 to 6 percent slopes	16.15	16.07	52	76	2e
6756	Nora silt loam, 6 to 11 percent slopes, eroded	7.74	7.7	52	67	3e
6681	Crofton silt loam, 17 to 30 percent slopes, eroded	5.33	5.3	0	37	6e
6300	Aowa silt loam, 0 to 3 percent slopes, occasionally flooded	3.32	3.3	0	77	2w
6767	Nora silty clay loam, 6 to 11 percent slopes	0.78	0.78	0	75	3e
TOTALS		100.52(*)	100%	29.67	67.93	3.25

(*) Total acres may differ in the second decimal compared to the sum of each acreage soil. This is due to a round error because we only show the acres of each soil with two decimal.



L-2400464

Dixon County, Nebraska, 507.1 AC +/-



Boundary

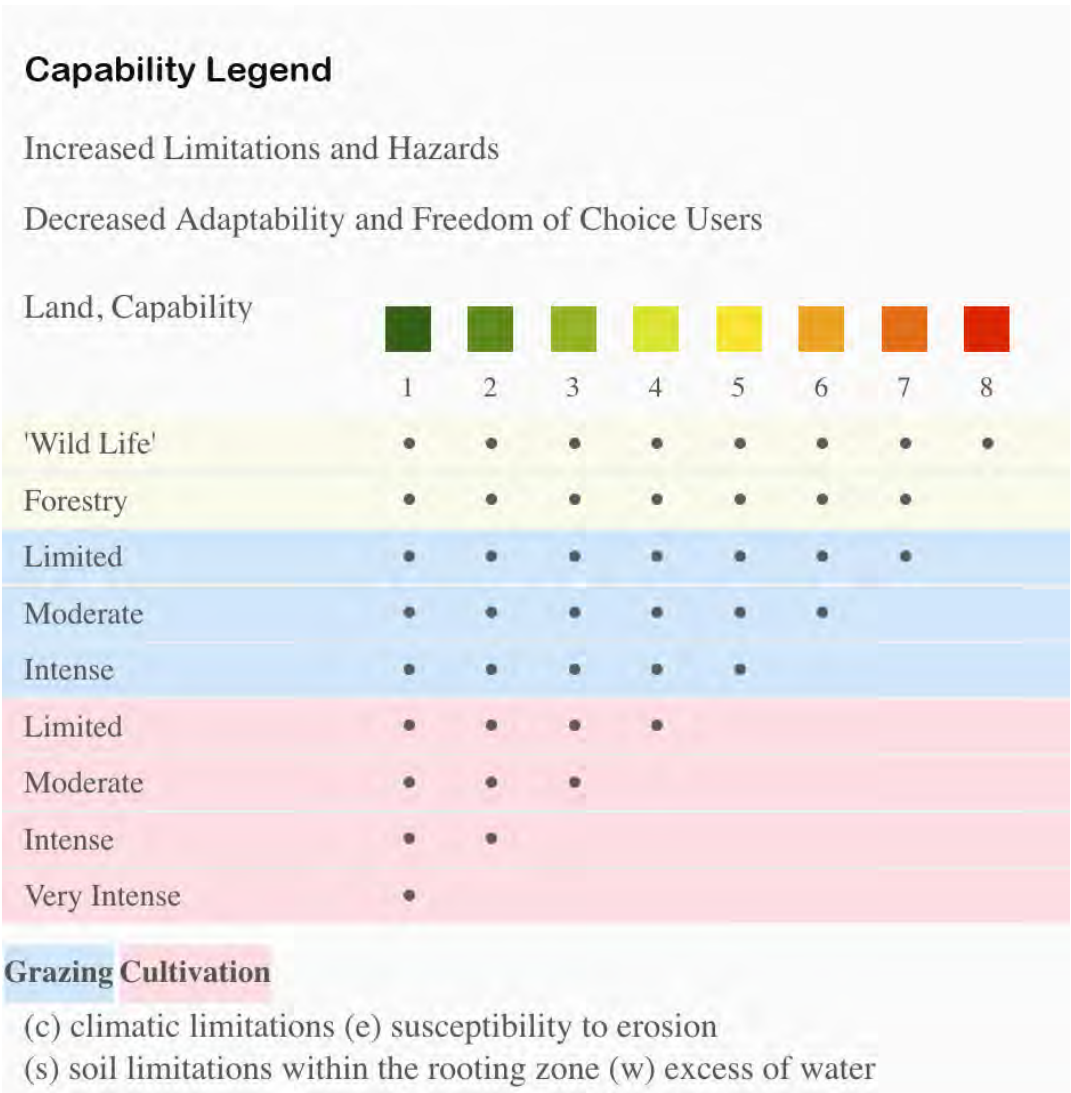


Boundary

| Boundary 91.74 ac

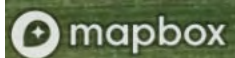
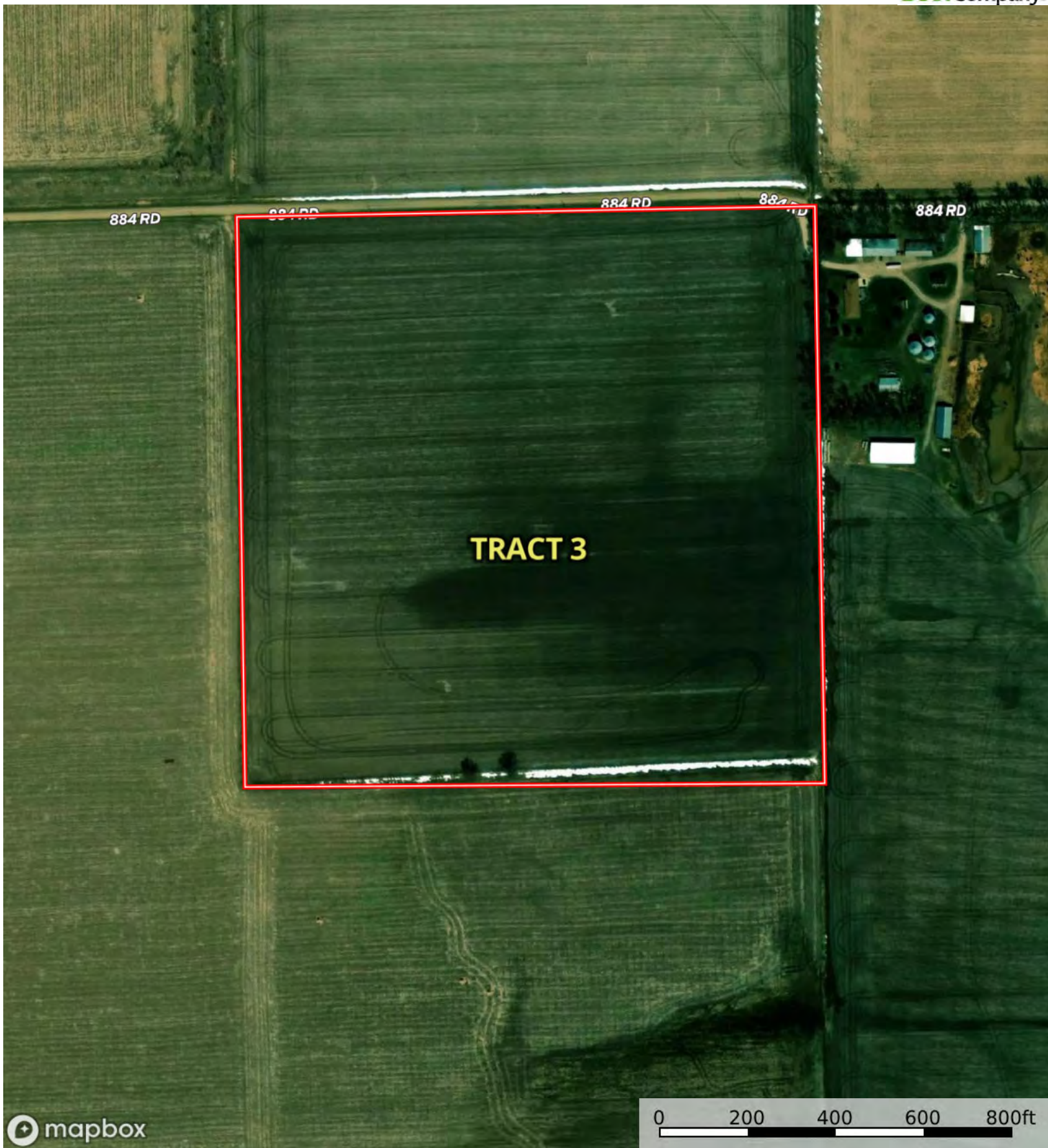
SOIL CODE	SOIL DESCRIPTION	ACRES	%	CPI	NCCPI	CAP
7710	Albaton silty clay, occasionally flooded	43.66	47.59	0	46	3w
7757	Modale very fine sandy loam, rarely flooded	14.25	15.53	0	66	1
6602	Alcester silt loam, gullied, 11 to 60 percent slopes	13.72	14.95	0	41	7e
6681	Crofton silt loam, 17 to 30 percent slopes, eroded	13.56	14.78	0	37	6e
7880	Onawa silty clay, occasionally flooded	6.01	6.55	0	70	2w
6749	Nora silt loam, 11 to 17 percent slopes	0.54	0.59	0	73	4e
TOTALS		91.74(*)	100%	-	48.75	3.67

(*) Total acres may differ in the second decimal compared to the sum of each acreage soil. This is due to a round error because we only show the acres of each soil with two decimal.



L-2400464

Dixon County, Nebraska, 507.1 AC +/-



0 200 400 600 800ft

Boundary



The information contained herein was obtained from sources deemed to be reliable. Land id™ Services makes no warranties or guarantees as to the completeness or accuracy thereof.

L-2400464

Dixon County, Nebraska, 507.1 AC +/-



mapbox

0 200 400 600 800ft

Boundary



The information contained herein was obtained from sources deemed to be reliable. Land id™ Services makes no warranties or guarantees as to the completeness or accuracy thereof.

| Boundary 39.51 ac

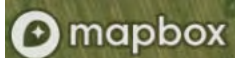
SOIL CODE	SOIL DESCRIPTION	ACRES	%	CPI	NCCPI	CAP
7710	Albaton silty clay, occasionally flooded	24.21	61.28	0	46	3w
7880	Onawa silty clay, occasionally flooded	15.3	38.72	0	70	2w
TOTALS		39.51(*)	100%	-	55.29	2.61

(*) Total acres may differ in the second decimal compared to the sum of each acreage soil. This is due to a round error because we only show the acres of each soil with two decimal.



L-2400464

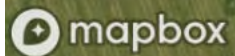
Dixon County, Nebraska, 507.1 AC +/-



Boundary

L-2400464

Dixon County, Nebraska, 507.1 AC +/-

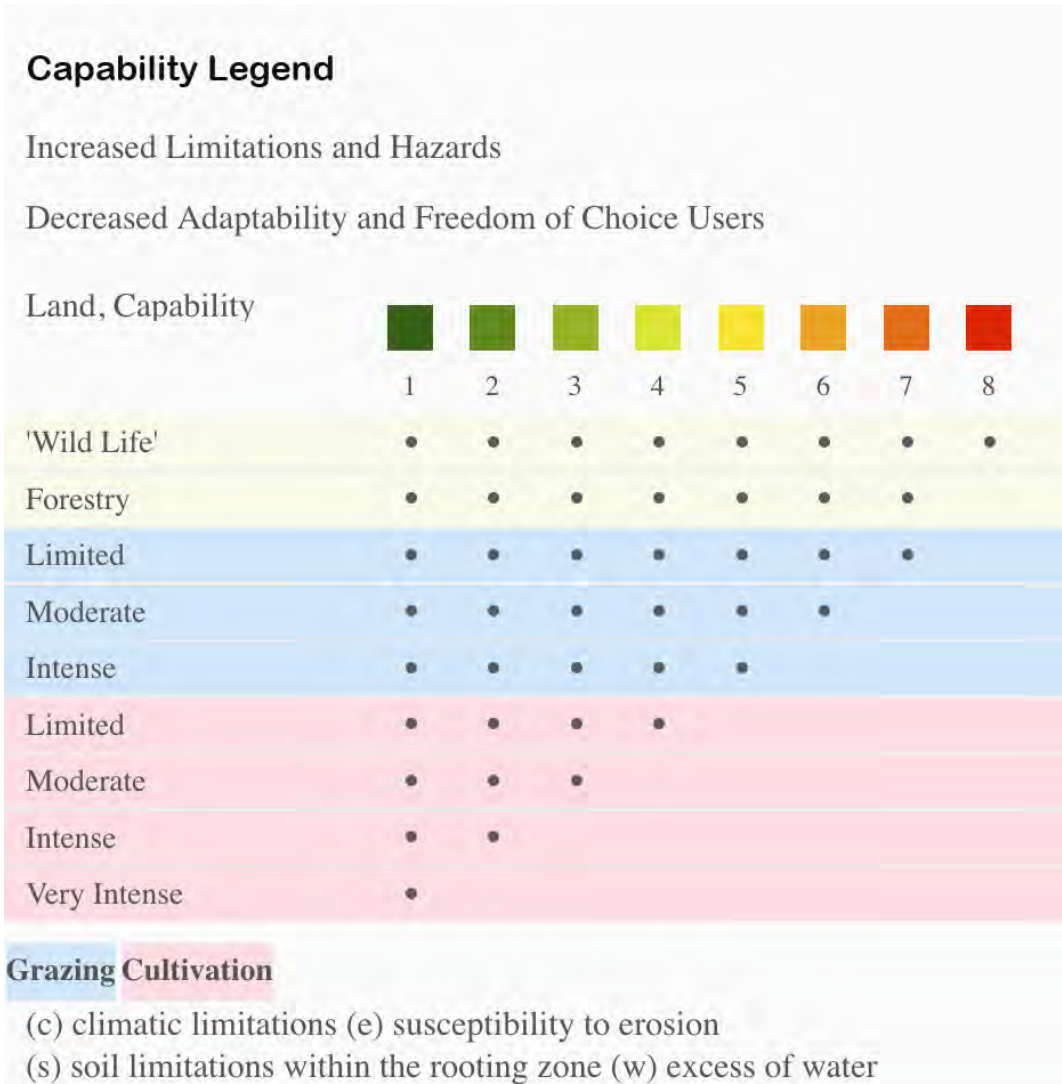


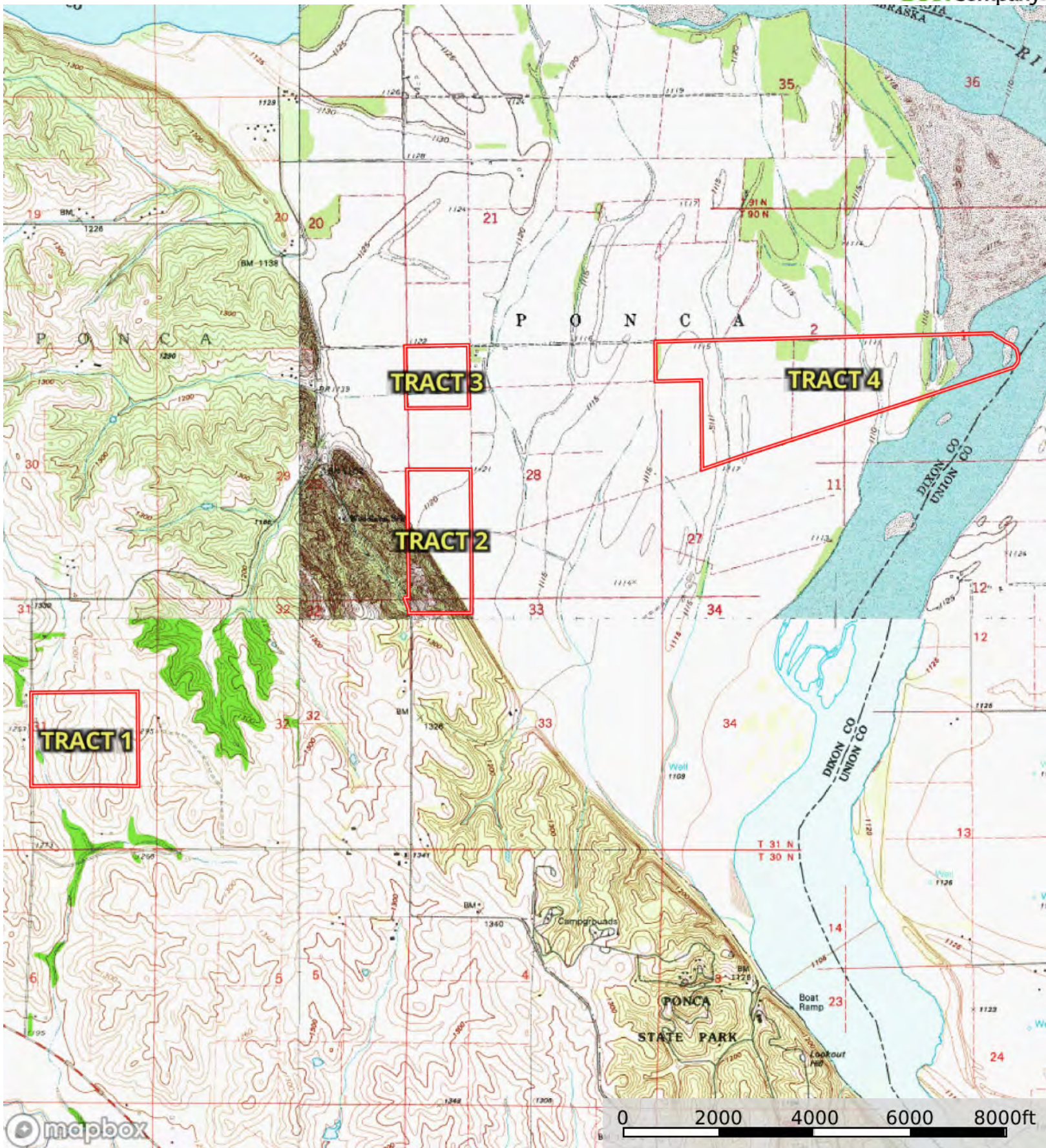
Boundary

| Boundary 274.06 ac

SOIL CODE	SOIL DESCRIPTION	ACRES	%	CPI	NCCPI	CAP
7705	Grable very fine sandy loam, rarely flooded	82.19	29.99	0	49	2s
7744	Haynie silt loam, rarely flooded	60.28	21.99	0	70	1
7083	Sarpy loamy fine sand, occasionally flooded	46.62	17.01	0	32	4s
7880	Onawa silty clay, occasionally flooded	25.29	9.23	0	70	2w
9999	Water	20.79	7.59	0	-	-
7855	Sarpy silty clay, overwash, occasionally flooded	19.95	7.28	0	38	4s
7847	Sarpy-Riverwash complex, frequently flooded	18.83	6.87	0	25	5w
W	Water	0.11	0.04	0	-	8
TOTALS		274.06(*)	100%	-	46.48	2.51

(*) Total acres may differ in the second decimal compared to the sum of each acreage soil. This is due to a round error because we only show the acres of each soil with two decimal.





Boundary