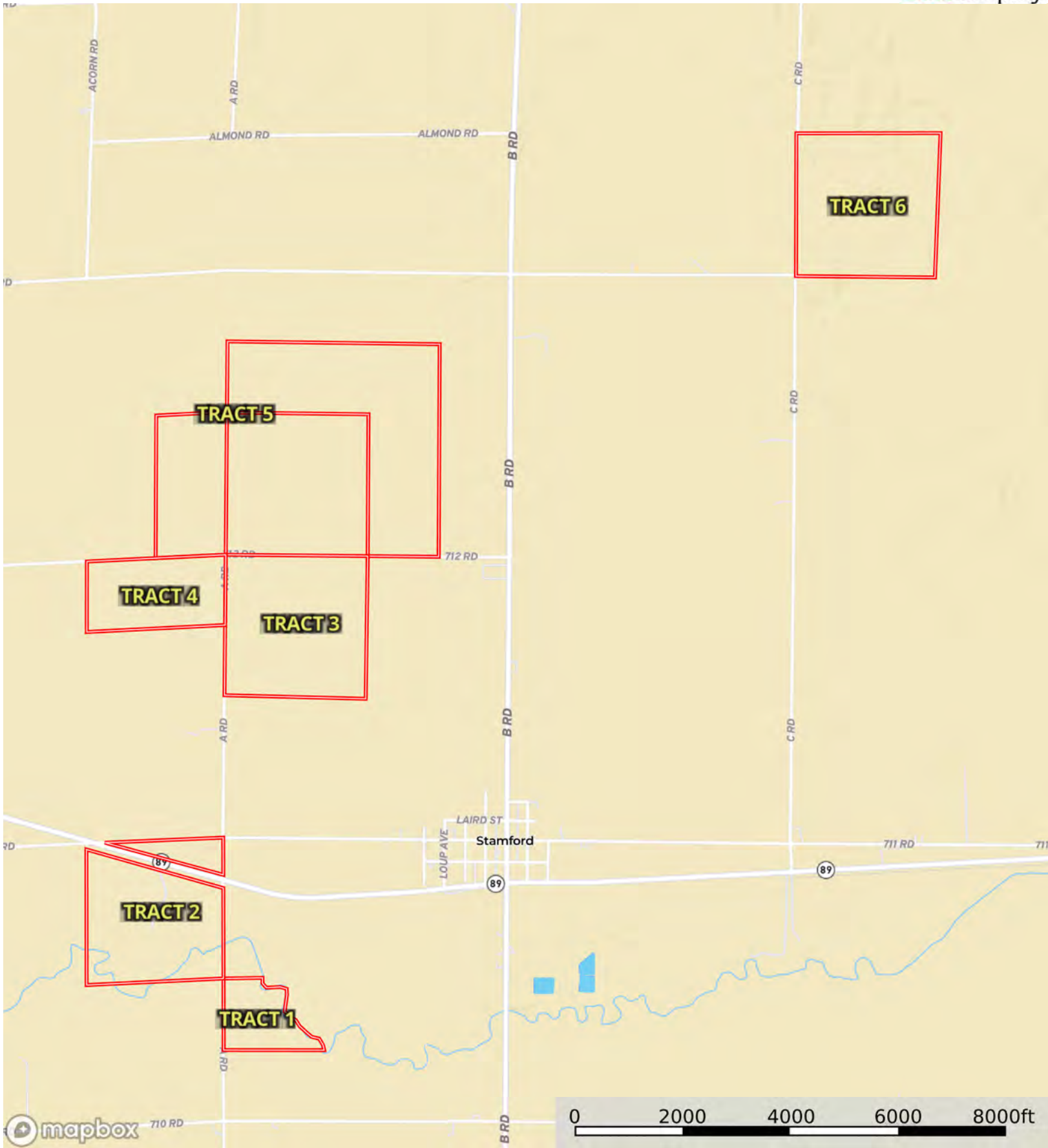


L-2400471

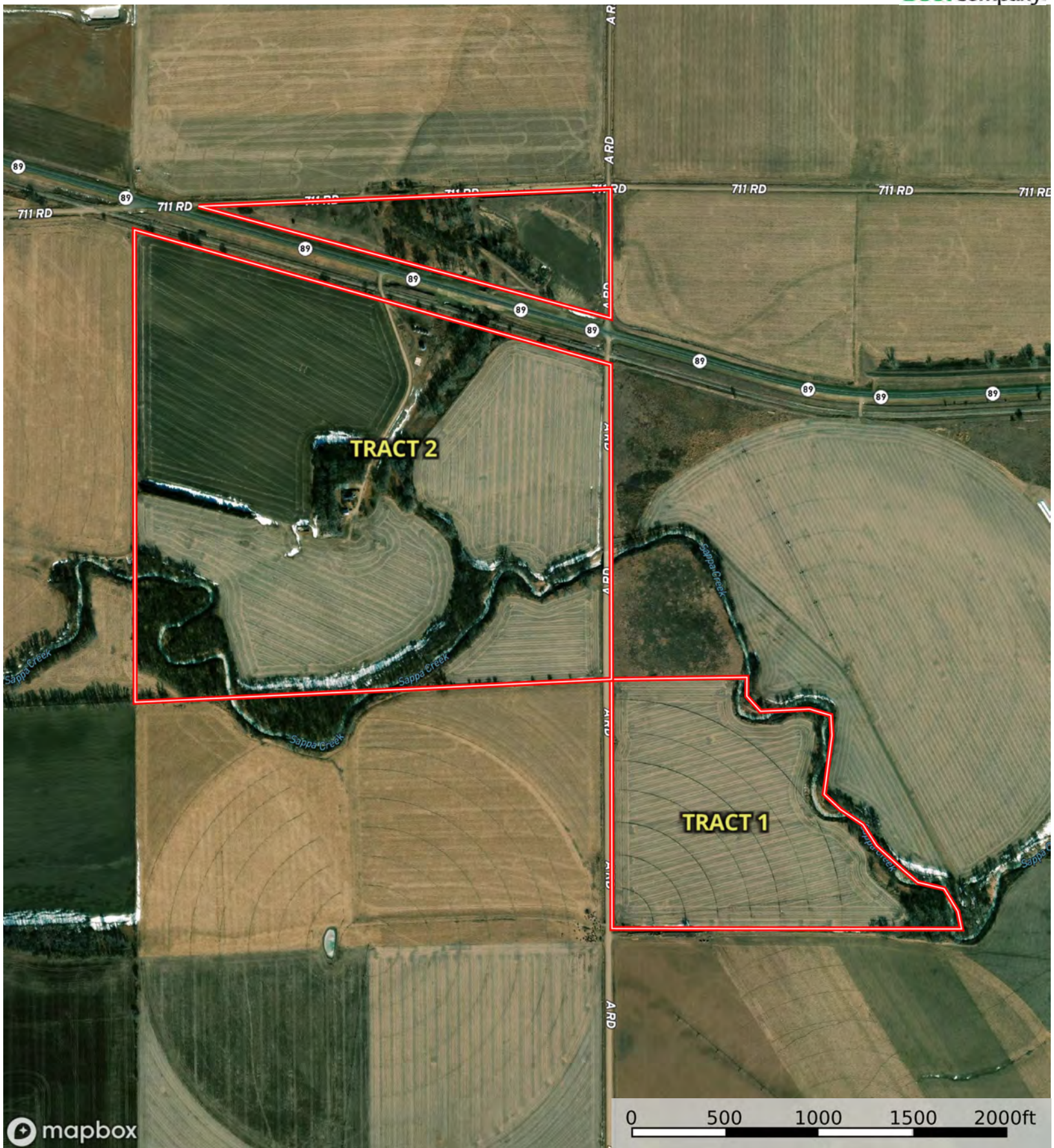
Harlan County, Nebraska, 863 AC +/-



Boundary



The information contained herein was obtained from sources deemed to be reliable. Land id™ Services makes no warranties or guarantees as to the completeness or accuracy thereof.



Boundary



Boundary

| Boundary 40.35 ac

SOIL CODE	SOIL DESCRIPTION	ACRES	%	CPI	NCCPI	CAP
3541	Hobbs and McCook silt loams, occasionally flooded	33.01	81.83	0	63	2w
3545	Hobbs silt loam, channeled, frequently flooded	7.34	18.2	0	46	5w
TOTALS		40.35(*)	100%	-	59.92	2.55

(*) Total acres may differ in the second decimal compared to the sum of each acreage soil. This is due to a round error because we only show the acres of each soil with two decimal.

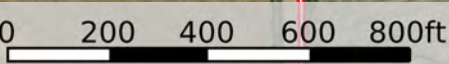


L-2400471

Harlan County, Nebraska, 863 AC +/-



Boundary



id. The information contained herein was obtained from sources deemed to be reliable. Land id™ Services makes no warranties or guarantees as to the completeness or accuracy thereof.

|  All Polygons 140.78 ac

SOIL CODE	SOIL DESCRIPTION	ACRES	%	CPI	NCCPI	CAP
8866	Hord silt loam, 0 to 1 percent slopes, warm	47.34	33.63	0	81	2c
3541	Hobbs and McCook silt loams, occasionally flooded	36.49	25.92	0	63	2w
8860	Hord and Hall silt loams, 0 to 1 percent slopes	21.4	15.2	0	77	2c
3545	Hobbs silt loam, channeled, frequently flooded	15.54	11.04	0	46	5w
2559	Coly-Uly silt loams, 11 to 30 percent slopes	9.21	6.54	0	61	6e
2819	Uly silt loam, 3 to 11 percent slopes	6.98	4.96	0	75	4e
8861	Hord and Hall silt loams, 1 to 3 percent slopes	3.49	2.48	0	77	2e
2528	Coly and Uly silt loams, 3 to 11 percent slopes, eroded	0.33	0.23	0	65	4e
TOTALS		140.78(*)	100%	-	70.13	2.7

(*) Total acres may differ in the second decimal compared to the sum of each acreage soil. This is due to a round error because we only show the acres of each soil with two decimal.

| Boundary 17.54 ac

SOIL CODE	SOIL DESCRIPTION	ACRES	%	CPI	NCCPI	CAP
2819	Uly silt loam, 3 to 11 percent slopes	6.65	37.91	0	75	4e
2559	Coly-Uly silt loams, 11 to 30 percent slopes	3.92	22.35	0	61	6e
8860	Hord and Hall silt loams, 0 to 1 percent slopes	3.77	21.49	0	77	2c
8866	Hord silt loam, 0 to 1 percent slopes, warm	3.02	17.22	0	81	2c
2528	Coly and Uly silt loams, 3 to 11 percent slopes, eroded	0.18	1.03	0	65	4e
TOTALS		17.54(*)	100%	-	73.23	3.67

(*) Total acres may differ in the second decimal compared to the sum of each acreage soil. This is due to a round error because we only show the acres of each soil with two decimal.

| Boundary 123.24 ac

SOIL CODE	SOIL DESCRIPTION	ACRES	%	CPI	NCCPI	CAP
8866	Hord silt loam, 0 to 1 percent slopes, warm	44.32	35.97	0	81	2c
3541	Hobbs and McCook silt loams, occasionally flooded	36.49	29.61	0	63	2w
8860	Hord and Hall silt loams, 0 to 1 percent slopes	17.63	14.31	0	77	2c
3545	Hobbs silt loam, channeled, frequently flooded	15.54	12.61	0	46	5w
2559	Coly-Uly silt loams, 11 to 30 percent slopes	5.29	4.29	0	61	6e
8861	Hord and Hall silt loams, 1 to 3 percent slopes	3.49	2.83	0	77	2e
2819	Uly silt loam, 3 to 11 percent slopes	0.33	0.27	0	75	4e
2528	Coly and Uly silt loams, 3 to 11 percent slopes, eroded	0.15	0.12	0	65	4e
TOTALS		123.24(*)	100%	-	69.68	2.56






(*) Total acres may differ in the second decimal compared to the sum of each acreage soil. This is due to a round error because we only show the acres of each soil with two decimal.

Capability Legend

Increased Limitations and Hazards

Decreased Adaptability and Freedom of Choice Users

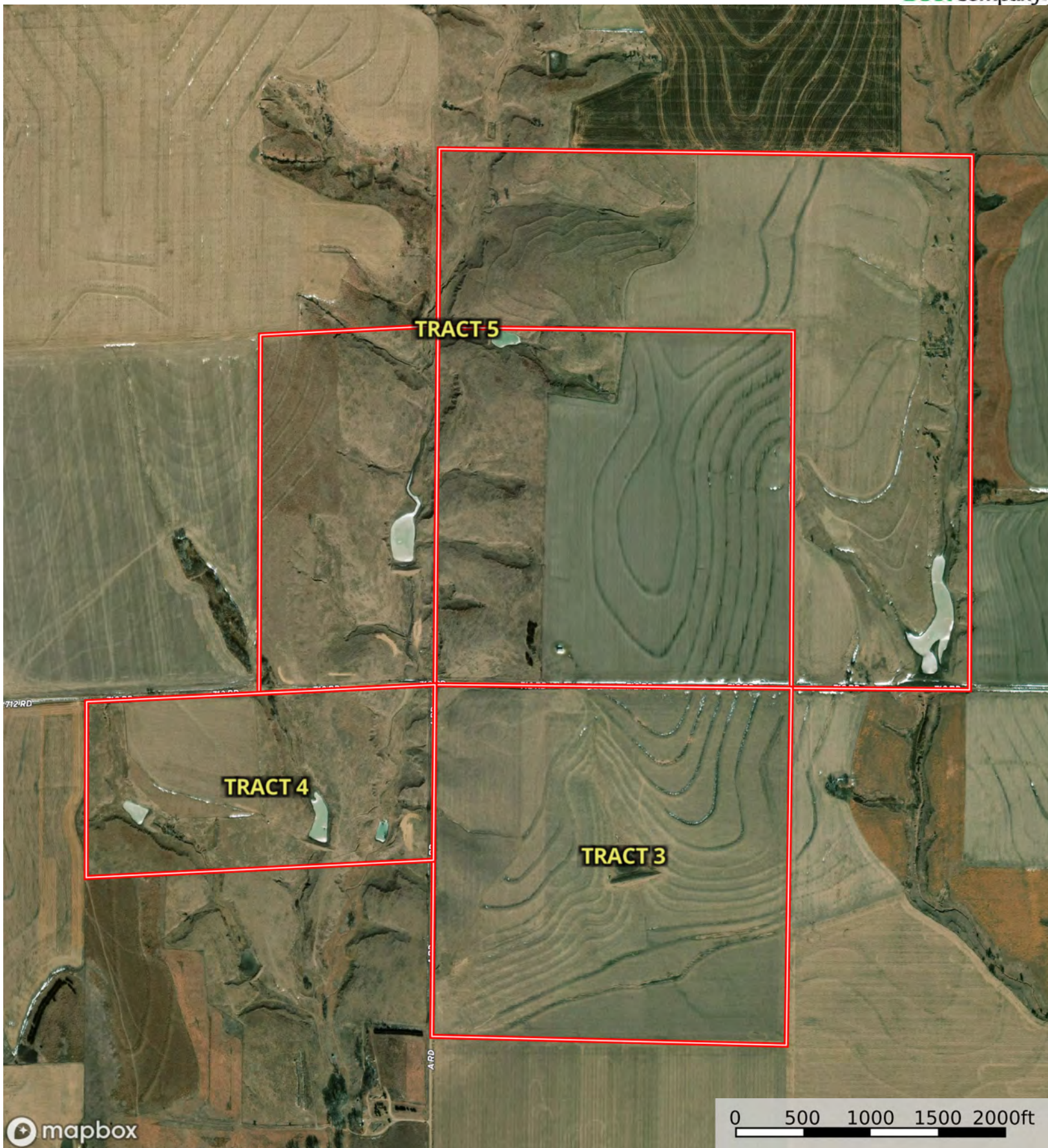
Land, Capability

								
	1	2	3	4	5	6	7	8
'Wild Life'	•	•	•	•	•	•	•	•
Forestry	•	•	•	•	•	•	•	
Limited	•	•	•	•	•	•	•	
Moderate	•	•	•	•	•	•		
Intense	•	•	•	•	•			
Limited	•	•	•	•				
Moderate	•	•	•					
Intense	•	•						
Very Intense	•							

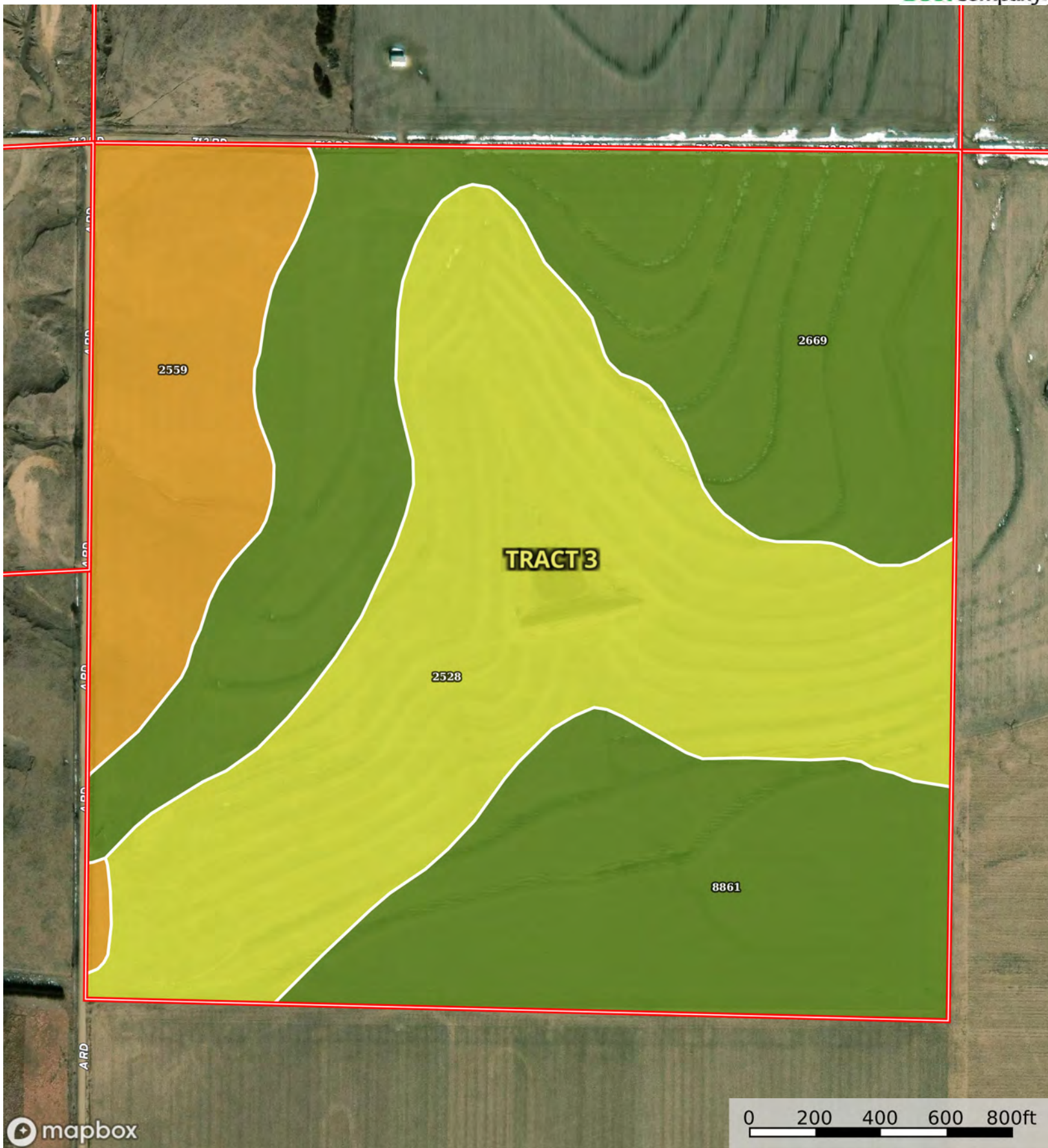
Grazing Cultivation

(c) climatic limitations (e) susceptibility to erosion

(s) soil limitations within the rooting zone (w) excess of water



Boundary



Boundary

| Boundary 159.3 ac

SOIL CODE	SOIL DESCRIPTION	ACRES	%	CPI	NCCPI	CAP
2528	Coly and Uly silt loams, 3 to 11 percent slopes, eroded	58.11	36.48	0	65	4e
2669	Holdrege silt loam, 1 to 3 percent slopes, eroded	49.76	31.24	0	69	2e
8861	Hord and Hall silt loams, 1 to 3 percent slopes	30.54	19.17	0	77	2e
2559	Coly-Uly silt loams, 11 to 30 percent slopes	20.89	13.11	0	61	6e
TOTALS		159.3(*)	100%	-	68.03	3.25

(*) Total acres may differ in the second decimal compared to the sum of each acreage soil. This is due to a round error because we only show the acres of each soil with two decimal.





Boundary

| Boundary 77.24 ac

SOIL CODE	SOIL DESCRIPTION	ACRES	%	CPI	NCCPI	CAP
2559	Coly-Uly silt loams, 11 to 30 percent slopes	52.49	67.95	0	61	6e
2673	Holdrege silt loam, 0 to 1 percent slopes, plains and breaks	17.6	22.78	0	77	2c
2528	Coly and Uly silt loams, 3 to 11 percent slopes, eroded	2.86	3.7	0	65	4e
2675	Holdrege silt loam, 3 to 7 percent slopes, plains and breaks	2.43	3.15	0	75	3e
2674	Holdrege silt loam, 1 to 3 percent slopes, plains and breaks	1.86	2.41	0	76	2e
TOTALS		77.24(*)	100%	-	65.59	4.82

(*) Total acres may differ in the second decimal compared to the sum of each acreage soil. This is due to a round error because we only show the acres of each soil with two decimal.





Boundary

▮ All Polygons 280.21 ac

SOIL CODE	SOIL DESCRIPTION	ACRES	%	CPI	NCCPI	CAP
2669	Holdrege silt loam, 1 to 3 percent slopes, eroded	94.77	33.82	0	69	2e
2526	Coly and Nuckolls silt loams, 11 to 30 percent slopes, eroded	75.86	27.07	0	54	6e
2559	Coly-Uly silt loams, 11 to 30 percent slopes	53.3	19.02	0	61	6e
2810	Uly and Coly silt loams, 11 to 30 percent slopes	26.68	9.52	0	63	6e
2674	Holdrege silt loam, 1 to 3 percent slopes, plains and breaks	20.98	7.49	0	76	2e
2528	Coly and Uly silt loams, 3 to 11 percent slopes, eroded	6.28	2.24	0	65	4e
4123	Holdrege and Uly soils, 3 to 7 percent slopes, eroded	2.02	0.72	0	66	3e
2675	Holdrege silt loam, 3 to 7 percent slopes, plains and breaks	0.32	0.11	0	75	3e
TOTALS		280.21(*)	100%	-	63.27	4.28

(*) Total acres may differ in the second decimal compared to the sum of each acreage soil. This is due to a round error because we only show the acres of each soil with two decimal.

| Boundary 200.19 ac

SOIL CODE	SOIL DESCRIPTION	ACRES	%	CPI	NCCPI	CAP
2669	Holdrege silt loam, 1 to 3 percent slopes, eroded	94.77	47.34	0	69	2e
2526	Coly and Nuckolls silt loams, 11 to 30 percent slopes, eroded	75.86	37.89	0	54	6e
2810	Uly and Coly silt loams, 11 to 30 percent slopes	26.68	13.33	0	63	6e
2559	Coly-Uly silt loams, 11 to 30 percent slopes	2.42	1.21	0	61	6e
2528	Coly and Uly silt loams, 3 to 11 percent slopes, eroded	0.46	0.23	0	65	4e
TOTALS		200.19(*)	100%	-	62.41	4.1

(*) Total acres may differ in the second decimal compared to the sum of each acreage soil. This is due to a round error because we only show the acres of each soil with two decimal.

| Boundary 80.02 ac

SOIL CODE	SOIL DESCRIPTION	ACRES	%	CPI	NCCPI	CAP
2559	Coly-Uly silt loams, 11 to 30 percent slopes	50.88	63.58	0	61	6e
2674	Holdrege silt loam, 1 to 3 percent slopes, plains and breaks	20.98	26.22	0	76	2e
2528	Coly and Uly silt loams, 3 to 11 percent slopes, eroded	5.82	7.27	0	65	4e
4123	Holdrege and Uly soils, 3 to 7 percent slopes, eroded	2.02	2.52	0	66	3e
2675	Holdrege silt loam, 3 to 7 percent slopes, plains and breaks	0.32	0.4	0	75	3e
TOTALS		80.02(*)	100%	-	65.41	4.72









(*) Total acres may differ in the second decimal compared to the sum of each acreage soil. This is due to a round error because we only show the acres of each soil with two decimal.

Capability Legend

Increased Limitations and Hazards

Decreased Adaptability and Freedom of Choice Users

Land, Capability

								
	1	2	3	4	5	6	7	8
'Wild Life'	•	•	•	•	•	•	•	•
Forestry	•	•	•	•	•	•	•	
Limited	•	•	•	•	•	•	•	
Moderate	•	•	•	•	•	•		
Intense	•	•	•	•	•			
Limited	•	•	•	•				
Moderate	•	•	•					
Intense	•	•						
Very Intense	•							

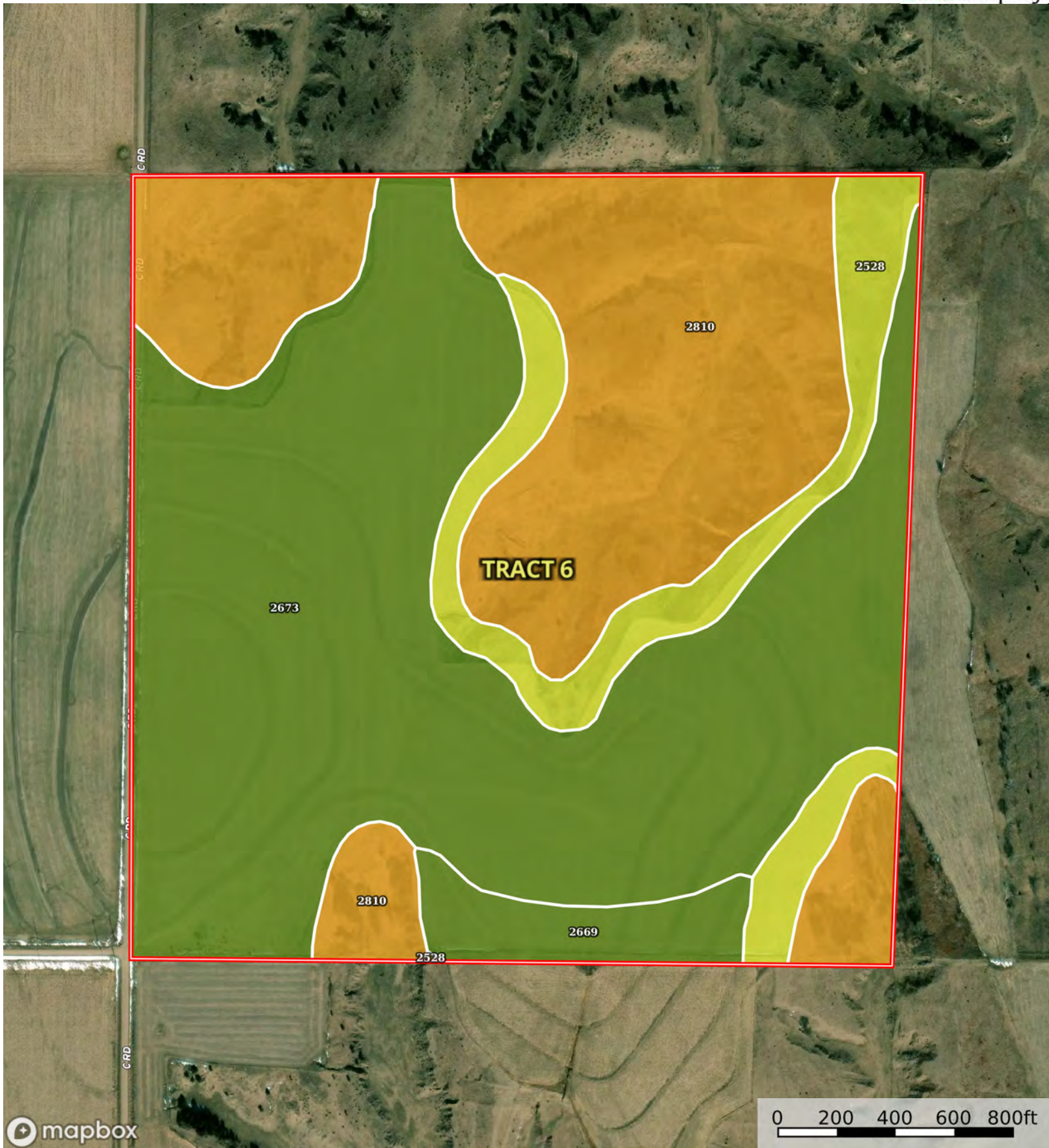
Grazing Cultivation

(c) climatic limitations (e) susceptibility to erosion

(s) soil limitations within the rooting zone (w) excess of water



Boundary

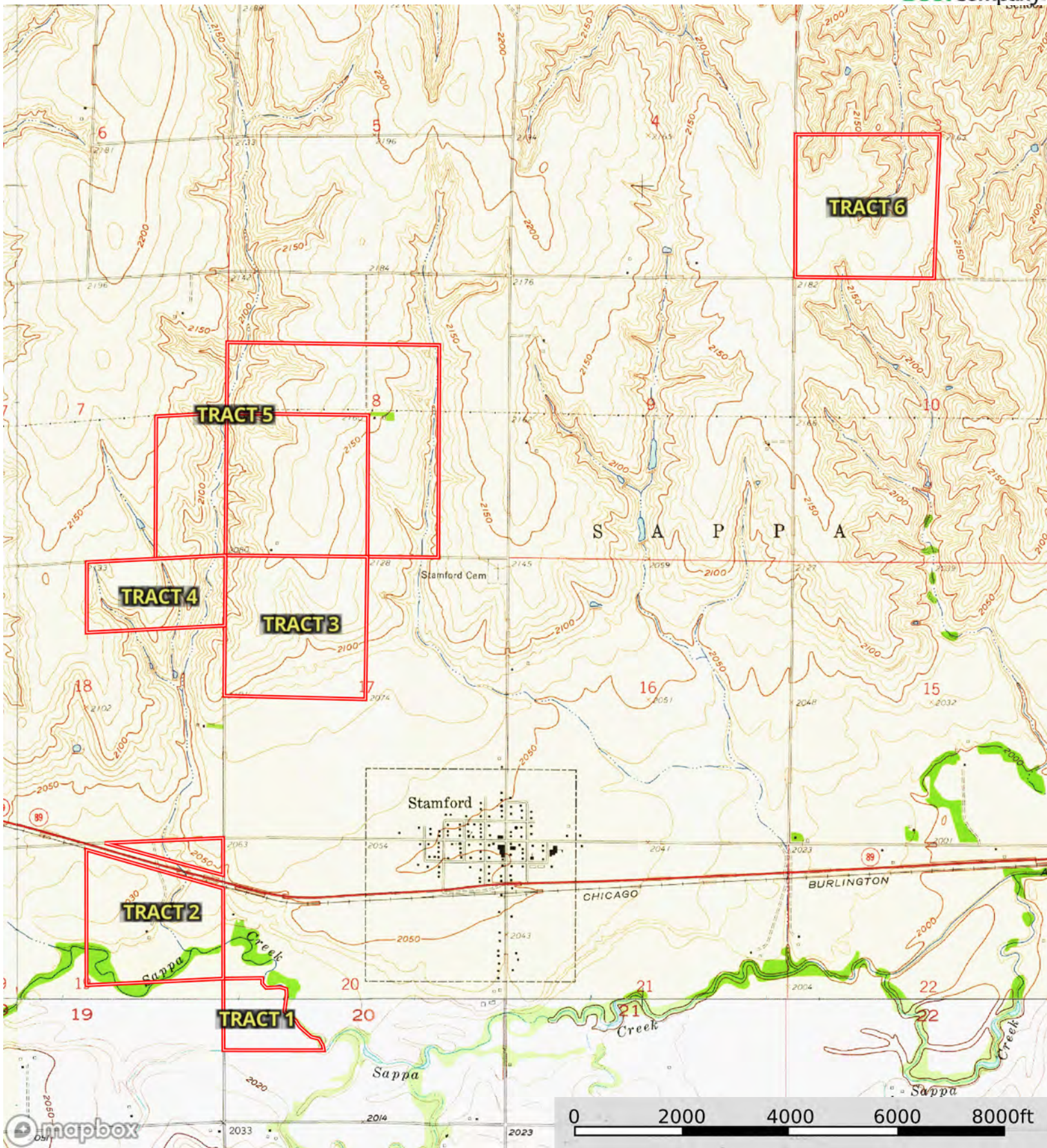


| Boundary 161.81 ac

SOIL CODE	SOIL DESCRIPTION	ACRES	%	CPI	NCCPI	CAP
2673	Holdrege silt loam, 0 to 1 percent slopes, plains and breaks	86.43	53.41	0	77	2c
2810	Uly and Coly silt loams, 11 to 30 percent slopes	53.96	33.34	0	63	6e
2528	Coly and Uly silt loams, 3 to 11 percent slopes, eroded	15.31	9.46	0	65	4e
2669	Holdrege silt loam, 1 to 3 percent slopes, eroded	6.11	3.78	0	69	2e
TOTALS		161.8 1(*)	100%	-	70.89	3.52

(*) Total acres may differ in the second decimal compared to the sum of each acreage soil. This is due to a round error because we only show the acres of each soil with two decimal.





Boundary

