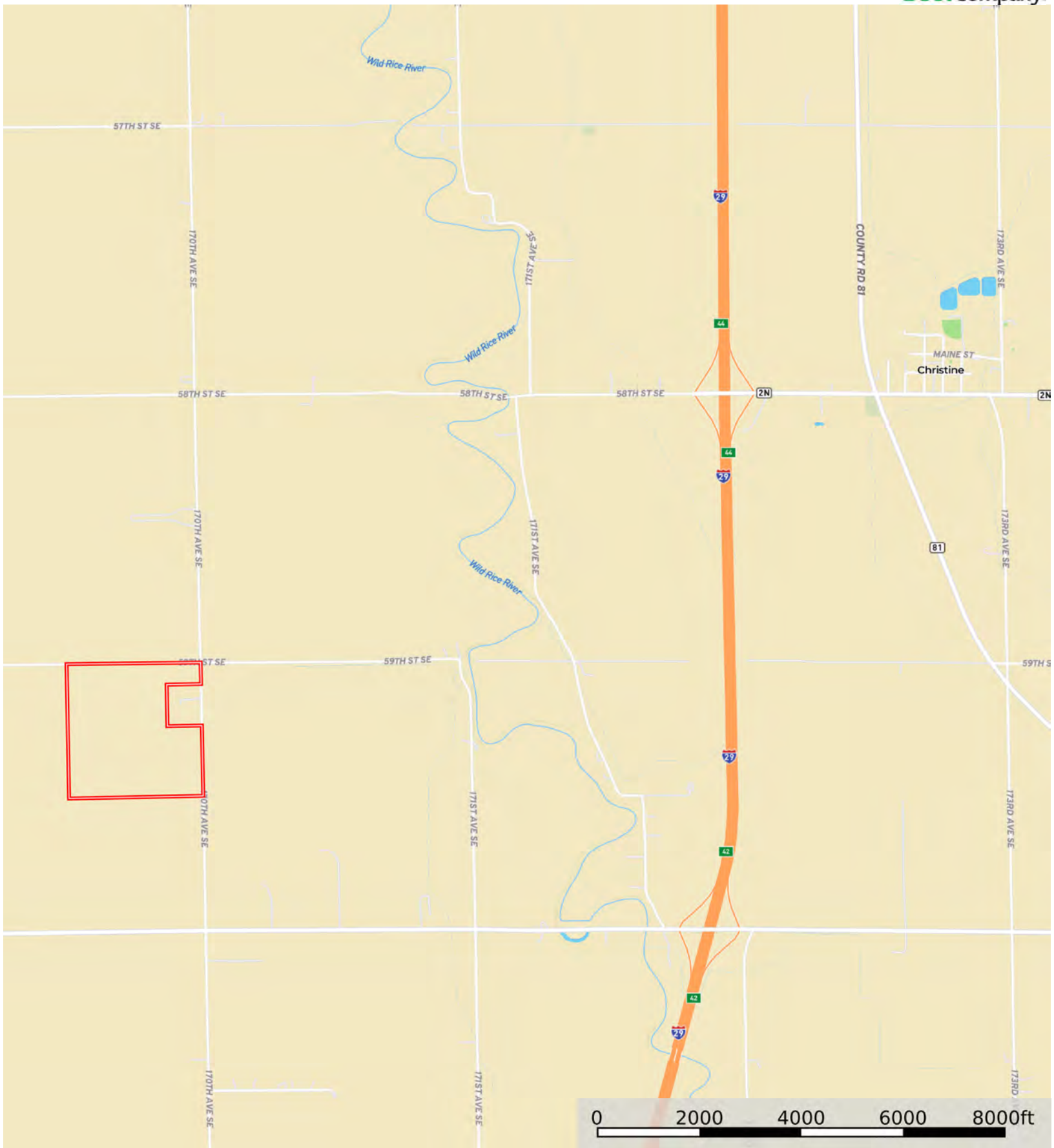


L-2400482

Richland County, North Dakota, 147.4 AC +/-



Boundary



The information contained herein was obtained from sources deemed to be reliable. Land id™ Services makes no warranties or guarantees as to the completeness or accuracy thereof.

L-2400482

Richland County, North Dakota, 147.4 AC +/-



Boundary



The information contained herein was obtained from sources deemed to be reliable. Land id™ Services makes no warranties or guarantees as to the completeness or accuracy thereof.

L-2400482

Richland County, North Dakota, 147.4 AC +/-



Boundary



The information contained herein was obtained from sources deemed to be reliable. Land id™ Services makes no warranties or guarantees as to the completeness or accuracy thereof.

| Boundary 146.41 ac

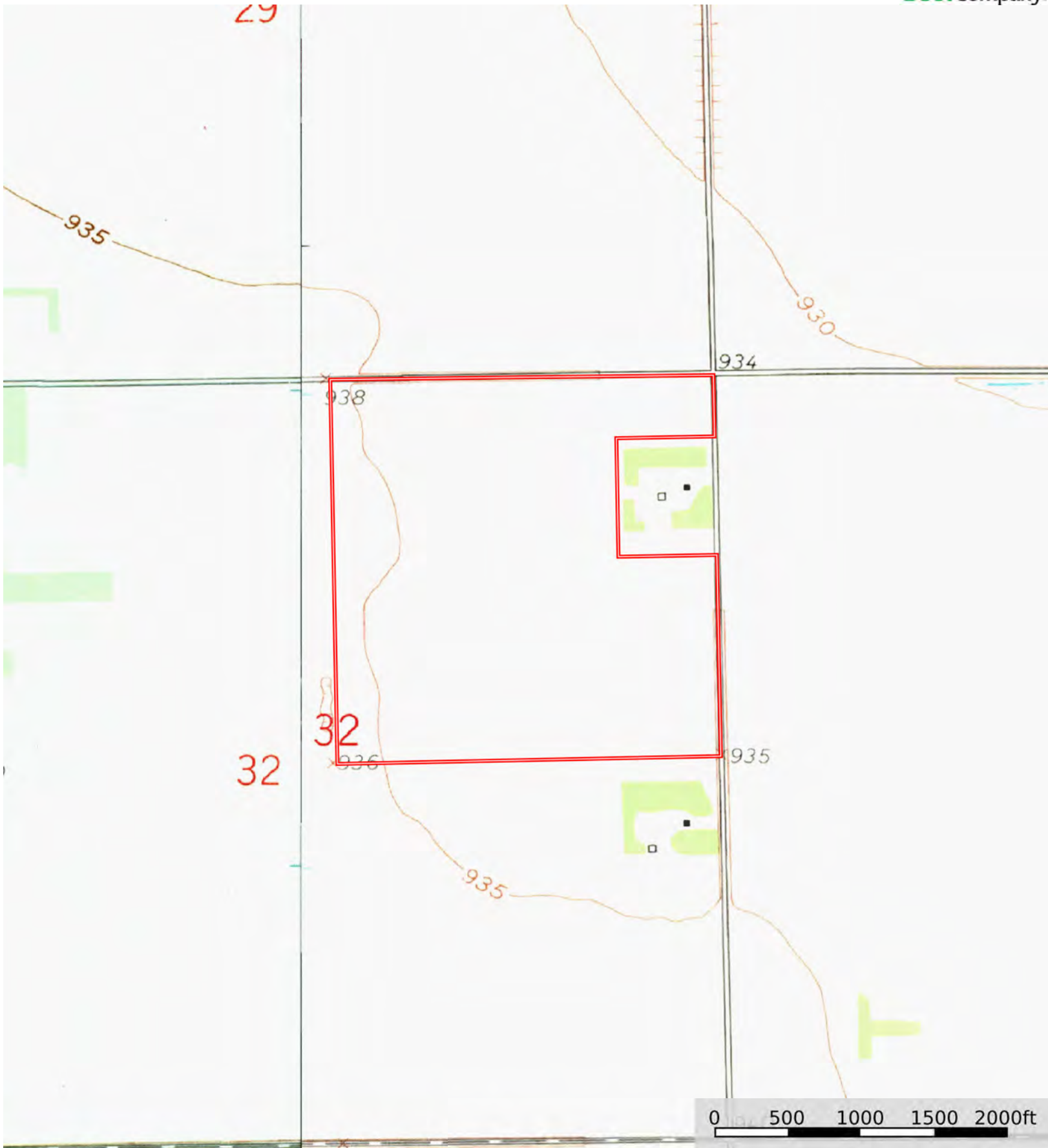
SOIL CODE	SOIL DESCRIPTION	ACRES	%	CPI	NCCPI	CAP
I229A	Fargo silty clay, 0 to 1 percent slopes	115.8 2	79.11	86	52	2w
I235A	Fargo silty clay, depressionals, 0 to 1 percent slopes	30.59	20.89	86	33	3w
TOTALS		146.4 1(*)	100%	86.0	48.03	2.21

(*) Total acres may differ in the second decimal compared to the sum of each acreage soil. This is due to a round error because we only show the acres of each soil with two decimal.



L-2400482

Richland County, North Dakota, 147.4 AC +/-



Boundary



The information contained herein was obtained from sources deemed to be reliable. Land ID™ Services makes no warranties or guarantees as to the completeness or accuracy thereof.