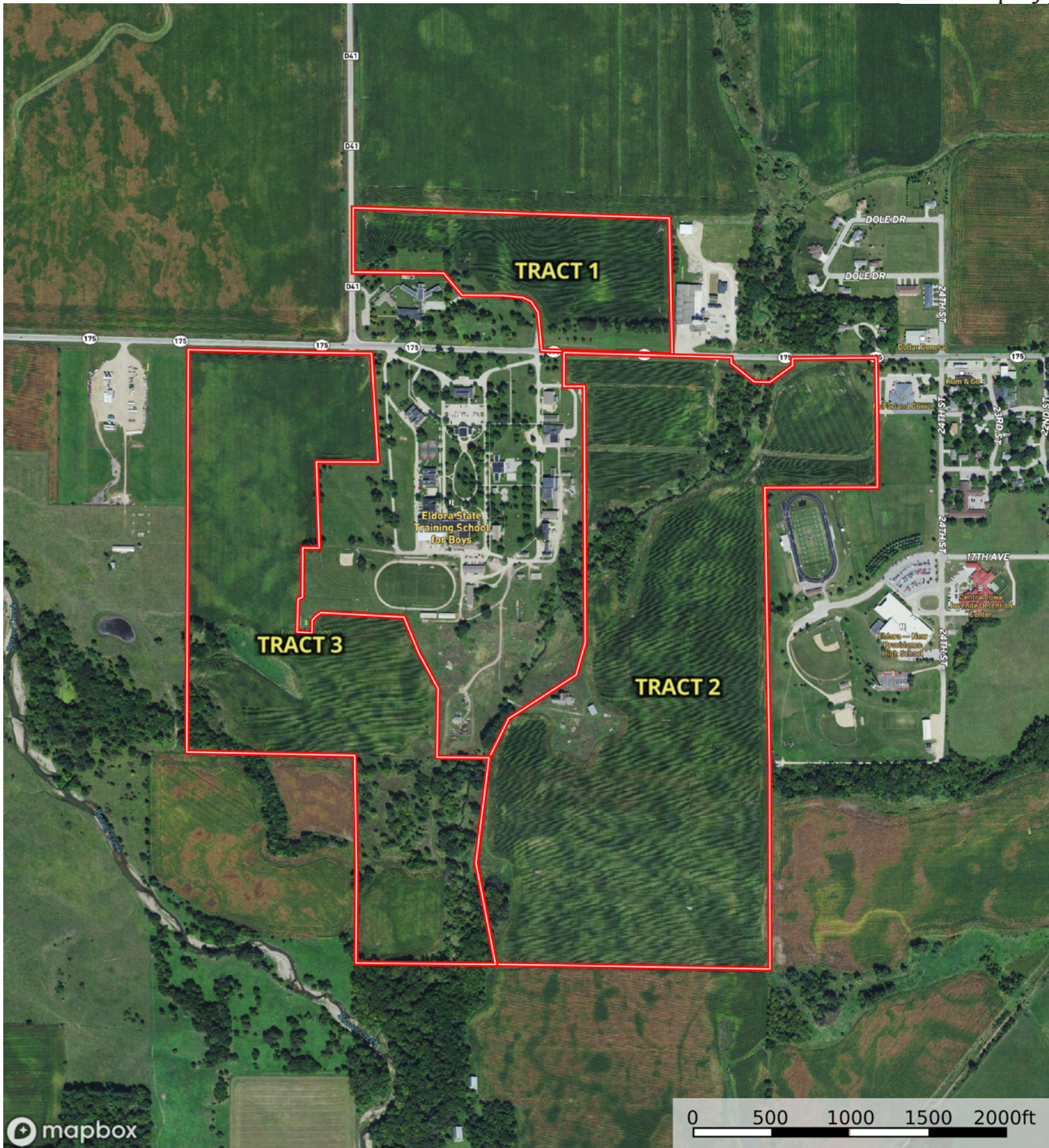
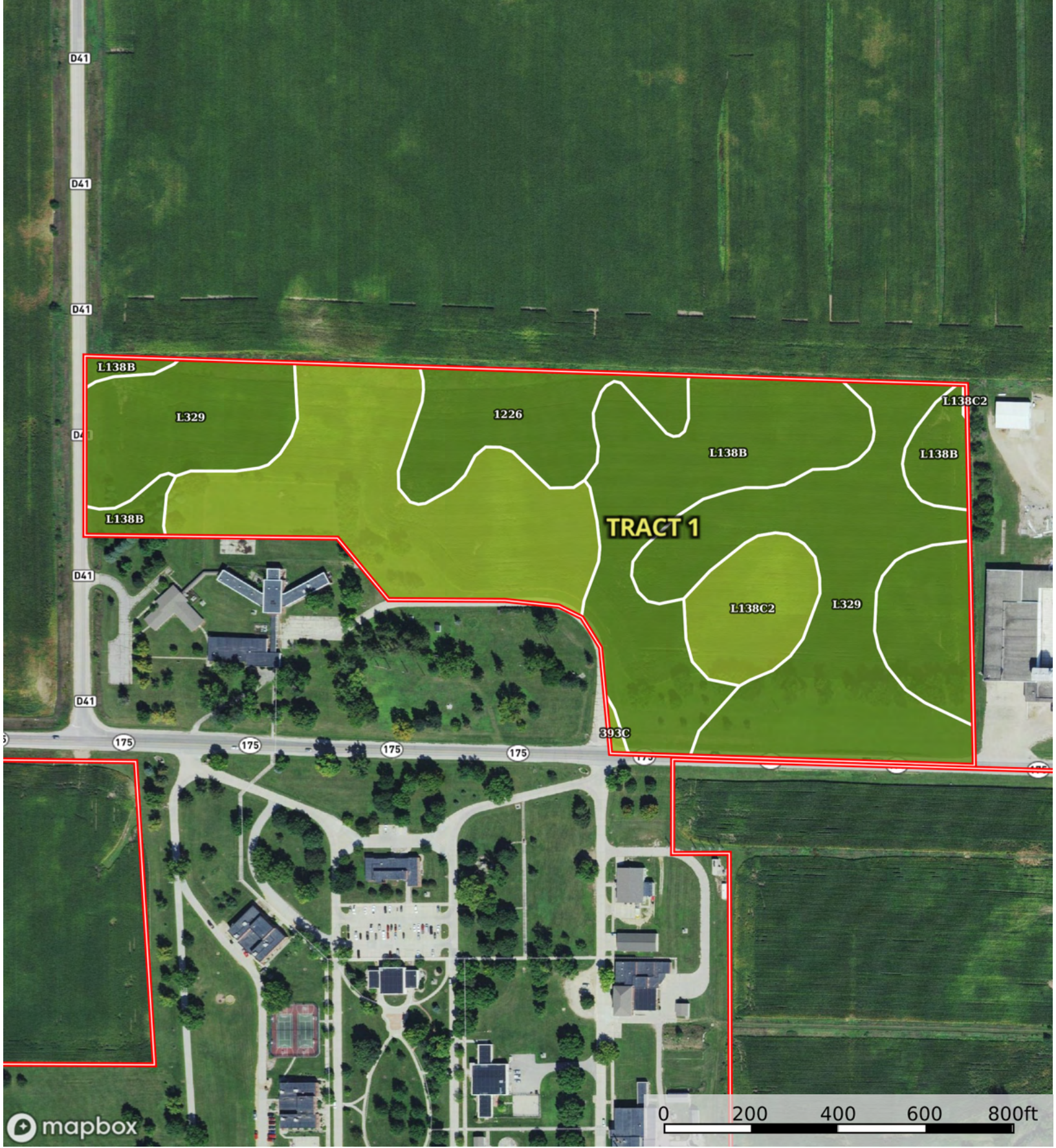


Boundary



Boundary

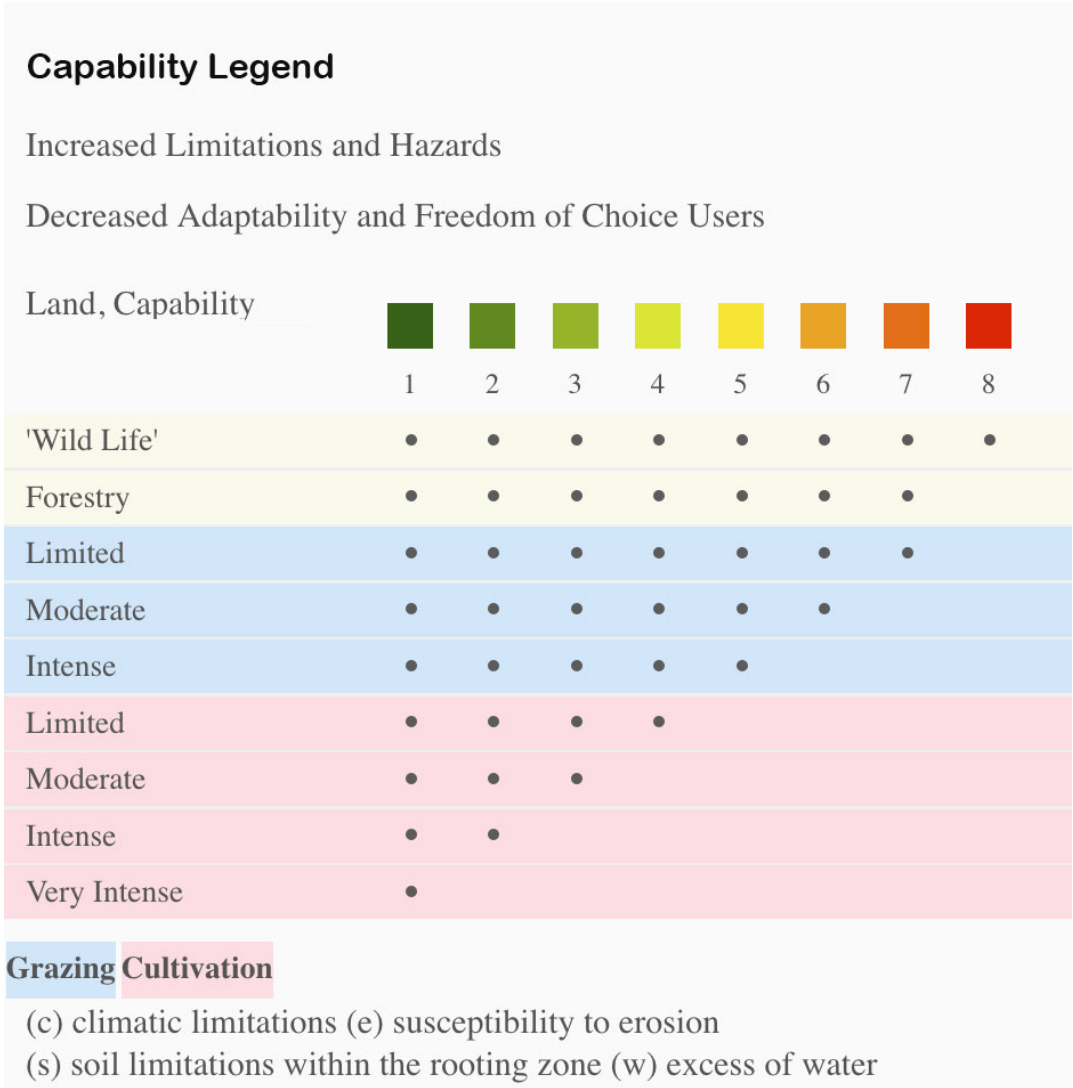


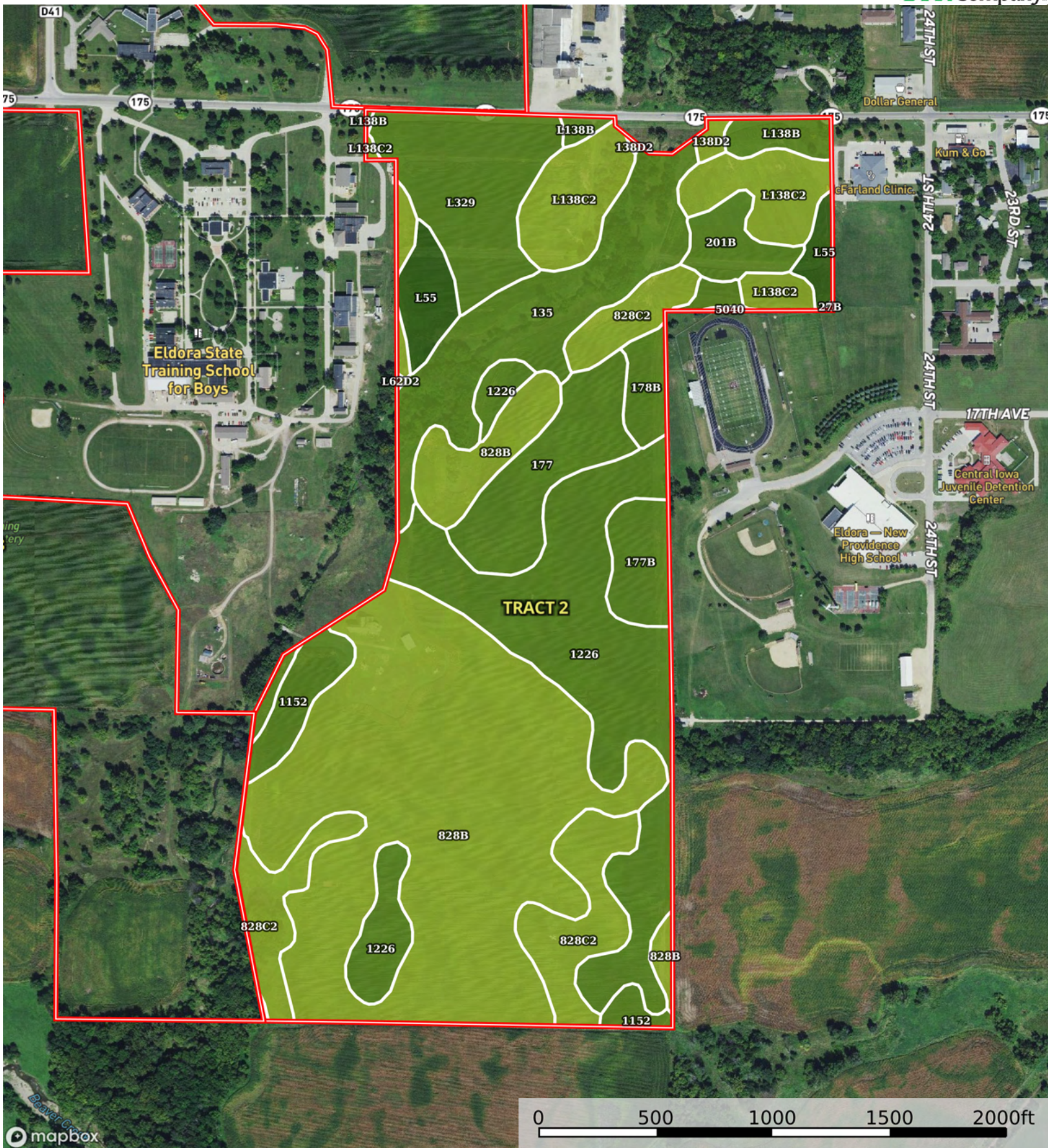
Boundary

| Boundary 29.68 ac

SOIL CODE	SOIL DESCRIPTION	ACRES	%	CSR2	CPI	NCCPI	CAP
L329	Webster-Nicollet complex, Bemis moraine, 0 to 3 percent slopes	9.62	32.4	89.0	0	84	2w
L138B	Clarion loam, Bemis moraine, 2 to 6 percent slopes	8.72	29.37	88.0	0	80	2e
393C	Sparta loamy fine sand, loamy substratum, 2 to 9 percent slopes	6.76	22.77	34.0	0	46	3e
1226	Lawler loam, 0 to 2 percent slopes, rarely flooded	2.76	9.3	59.0	0	87	2s
L138C2	Clarion loam, Bemis moraine, 6 to 10 percent slopes, moderately eroded	1.82	6.13	83.0	0	62	3e
TOTALS		29.68(*)	100%	73.0	-	73.08	2.29

(*) Total acres may differ in the second decimal compared to the sum of each acreage soil. This is due to a round error because we only show the acres of each soil with two decimal.





Boundary

Boundary 143.12 ac

SOIL CODE	SOIL DESCRIPTION	ACRES	%	CSR2	CPI	NCCPI	CAP
828B	Zenor sandy loam, 1 to 5 percent slopes	49.0	34.23	51.0	0	46	3e
1226	Lawler loam, 0 to 2 percent slopes, rarely flooded	24.5	17.12	59.0	0	87	2s
135	Coland clay loam, 0 to 2 percent slopes, occasionally flooded	12.83	8.96	76.0	0	82	2w
828C2	Zenor sandy loam, 5 to 9 percent slopes, moderately eroded	11.65	8.14	43.0	0	41	3e
L138C2	Clarion loam, Bemis moraine, 6 to 10 percent slopes, moderately eroded	10.62	7.42	83.0	0	62	3e
L329	Webster-Nicollet complex, Bemis moraine, 0 to 3 percent slopes	9.57	6.69	89.0	0	84	2w
177	Saude loam, 0 to 2 percent slopes	7	4.89	60.0	0	79	2s
L55	Nicollet loam, 1 to 3 percent slopes	3.61	2.52	91.0	0	85	1
1152	Marshan clay loam, 0 to 2 percent slopes, rarely flooded	3.49	2.44	54.0	0	82	2w
177B	Saude loam, 2 to 5 percent slopes	3.11	2.17	55.0	0	78	2s
201B	Coland-Terril complex, 2 to 5 percent slopes	2.54	1.77	80.0	0	93	2w
178B	Waukee loam, 2 to 5 percent slopes	2.46	1.72	64.0	0	83	2s
L138B	Clarion loam, Bemis moraine, 2 to 6 percent slopes	2.12	1.48	88.0	0	80	2e
138D2	Clarion loam, 9 to 14 percent slopes, moderately eroded	0.49	0.34	55.0	0	71	3e
5040	Anthroportic Udorthents, 2 to 9 percent slopes	0.07	0.05	5.0	0	79	6s
L62D2	Storden loam, Bemis moraine, 10 to 16 percent slopes, moderately eroded	0.04	0.03	41.0	0	63	4e
27B	Terril loam, 2 to 6 percent slopes	0.02	0.01	87.0	0	91	2e
TOTALS		143.12(*)	100%	61.76	-	65.82	2.48









(*) Total acres may differ in the second decimal compared to the sum of each acreage soil. This is due to a round error because we only show the acres of each soil with two decimal.

Capability Legend

Increased Limitations and Hazards

Decreased Adaptability and Freedom of Choice Users

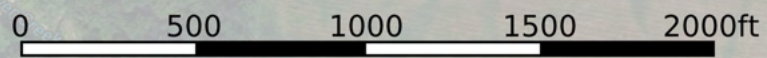
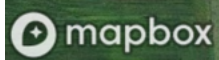
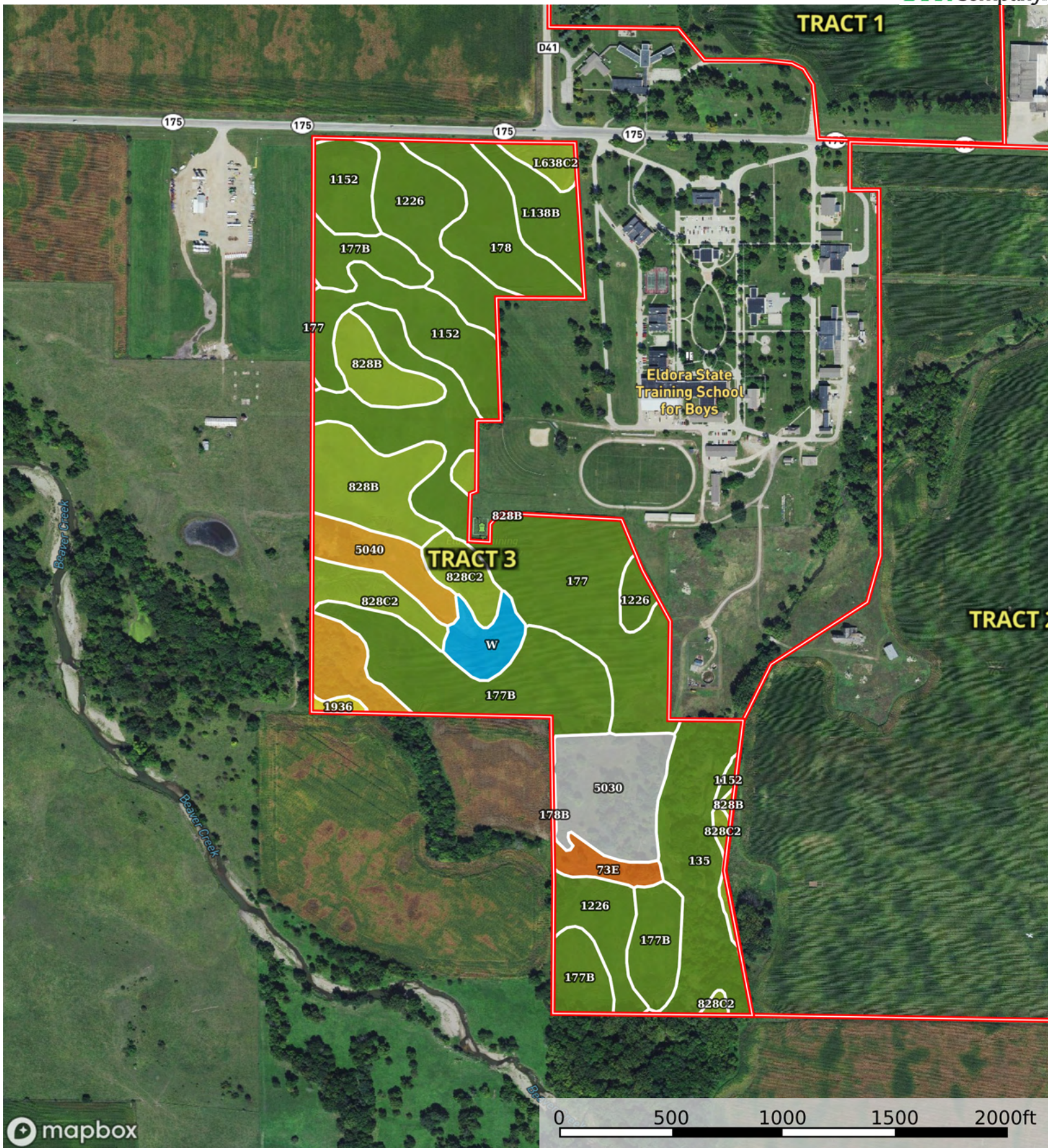
Land, Capability

								
	1	2	3	4	5	6	7	8
'Wild Life'	•	•	•	•	•	•	•	•
Forestry	•	•	•	•	•	•	•	
Limited	•	•	•	•	•	•	•	
Moderate	•	•	•	•	•	•		
Intense	•	•	•	•	•			
Limited	•	•	•	•				
Moderate	•	•	•					
Intense	•	•						
Very Intense	•							

Grazing Cultivation

(c) climatic limitations (e) susceptibility to erosion

(s) soil limitations within the rooting zone (w) excess of water



Boundary

| Boundary 93.47 ac

SOIL CODE	SOIL DESCRIPTION	ACRES	%	CSR2	CPI	NCCPI	CAP
177	Saude loam, 0 to 2 percent slopes	16.31	17.45	60.0	0	79	2s
177B	Saude loam, 2 to 5 percent slopes	15.4	16.48	55.0	0	78	2s
1226	Lawler loam, 0 to 2 percent slopes, rarely flooded	9.11	9.75	59.0	0	87	2s
1152	Marshan clay loam, 0 to 2 percent slopes, rarely flooded	8.12	8.69	54.0	0	82	2w
135	Coland clay loam, 0 to 2 percent slopes, occasionally flooded	7.97	8.53	76.0	0	82	2w
828B	Zenor sandy loam, 1 to 5 percent slopes	7.9	8.45	51.0	0	46	3e
5030	Pits, limestone quarry	5.89	6.3	-	0	-	-
5040	Anthroportic Udorthents, 2 to 9 percent slopes	5.24	5.61	5.0	0	79	6s
178	Waukee loam, 0 to 2 percent slopes	4.91	5.25	69.0	0	83	2s
828C2	Zenor sandy loam, 5 to 9 percent slopes, moderately eroded	4.78	5.11	43.0	0	41	3e
L138B	Clarion loam, Bemis moraine, 2 to 6 percent slopes	2.97	3.18	88.0	0	80	2e
W	Water	2.03	2.17	-	0	-	-
73E	Hawick gravelly sandy loam, 12 to 20 percent slopes	1.38	1.48	5.0	0	32	7s
L638C2	Clarion-Storden complex, Bemis moraine, 6 to 10 percent slopes, moderately eroded	1.04	1.11	75.0	0	64	3e
1936	Coland-Spillville-Hanlon complex, channeled, 0 to 2 percent slopes	0.34	0.36	24.0	0	31	5w
178B	Waukee loam, 2 to 5 percent slopes	0.08	0.09	64.0	0	83	2s
TOTALS		93.47(*)	100%	50.71	-	67.91	2.5









(*) Total acres may differ in the second decimal compared to the sum of each acreage soil. This is due to a round error because we only show the acres of each soil with two decimal.

Capability Legend

Increased Limitations and Hazards

Decreased Adaptability and Freedom of Choice Users

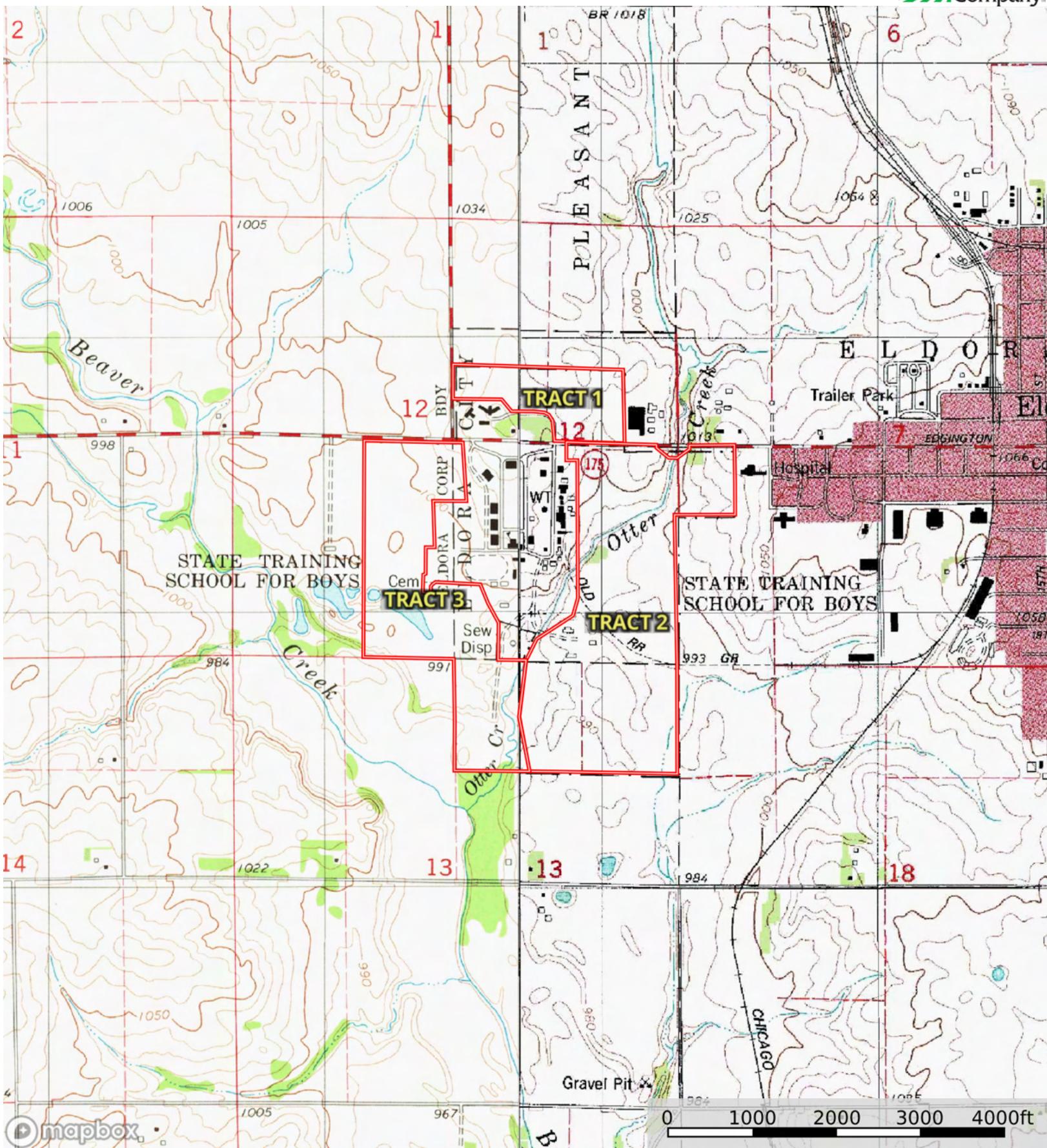
Land, Capability

								
	1	2	3	4	5	6	7	8
'Wild Life'	•	•	•	•	•	•	•	•
Forestry	•	•	•	•	•	•	•	
Limited	•	•	•	•	•	•	•	
Moderate	•	•	•	•	•	•		
Intense	•	•	•	•	•			
Limited	•	•	•	•				
Moderate	•	•	•					
Intense	•	•						
Very Intense	•							

Grazing Cultivation

(c) climatic limitations (e) susceptibility to erosion

(s) soil limitations within the rooting zone (w) excess of water



Boundary