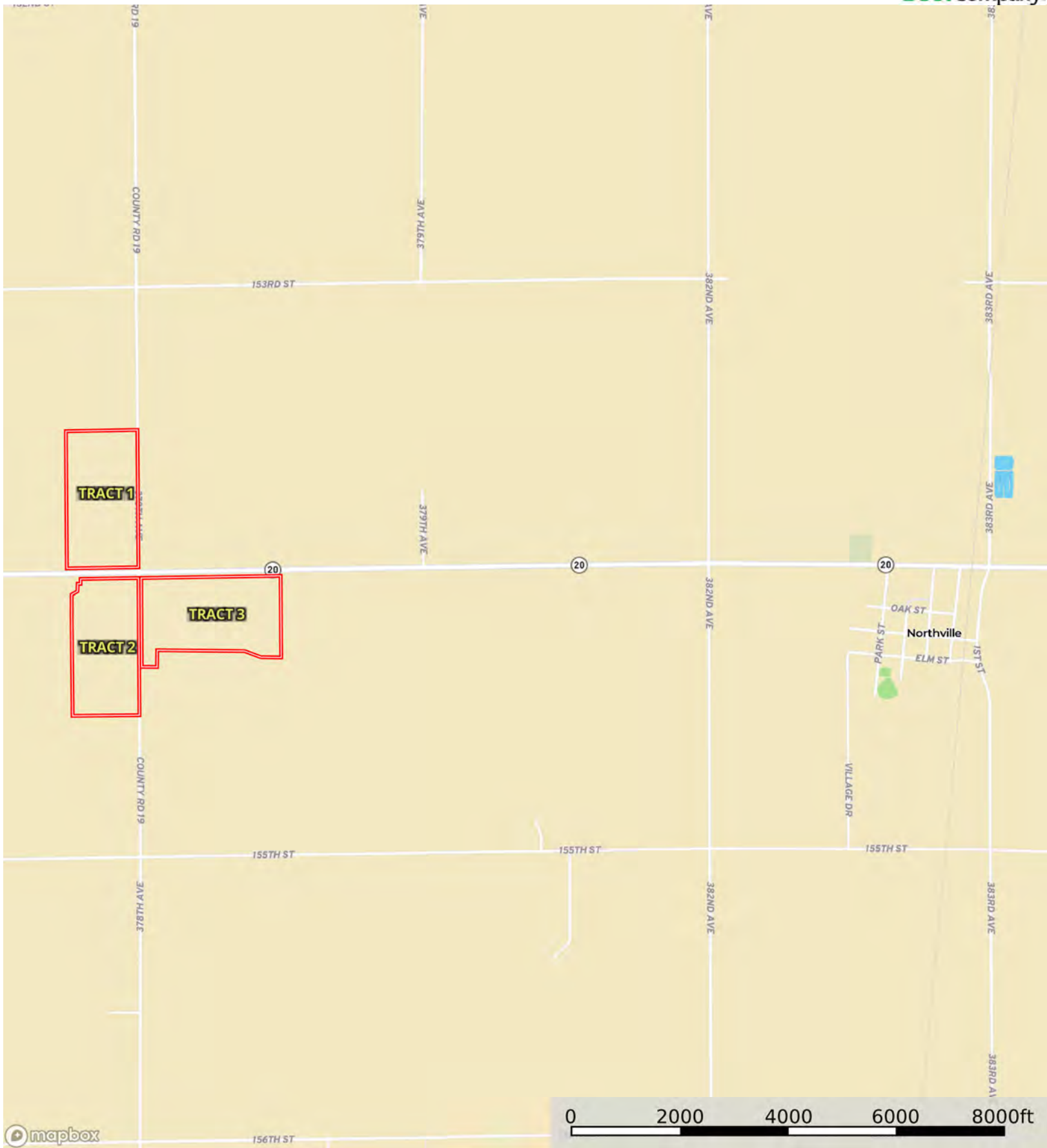


L-2400490

Spink County, South Dakota, 236.54 AC +/-



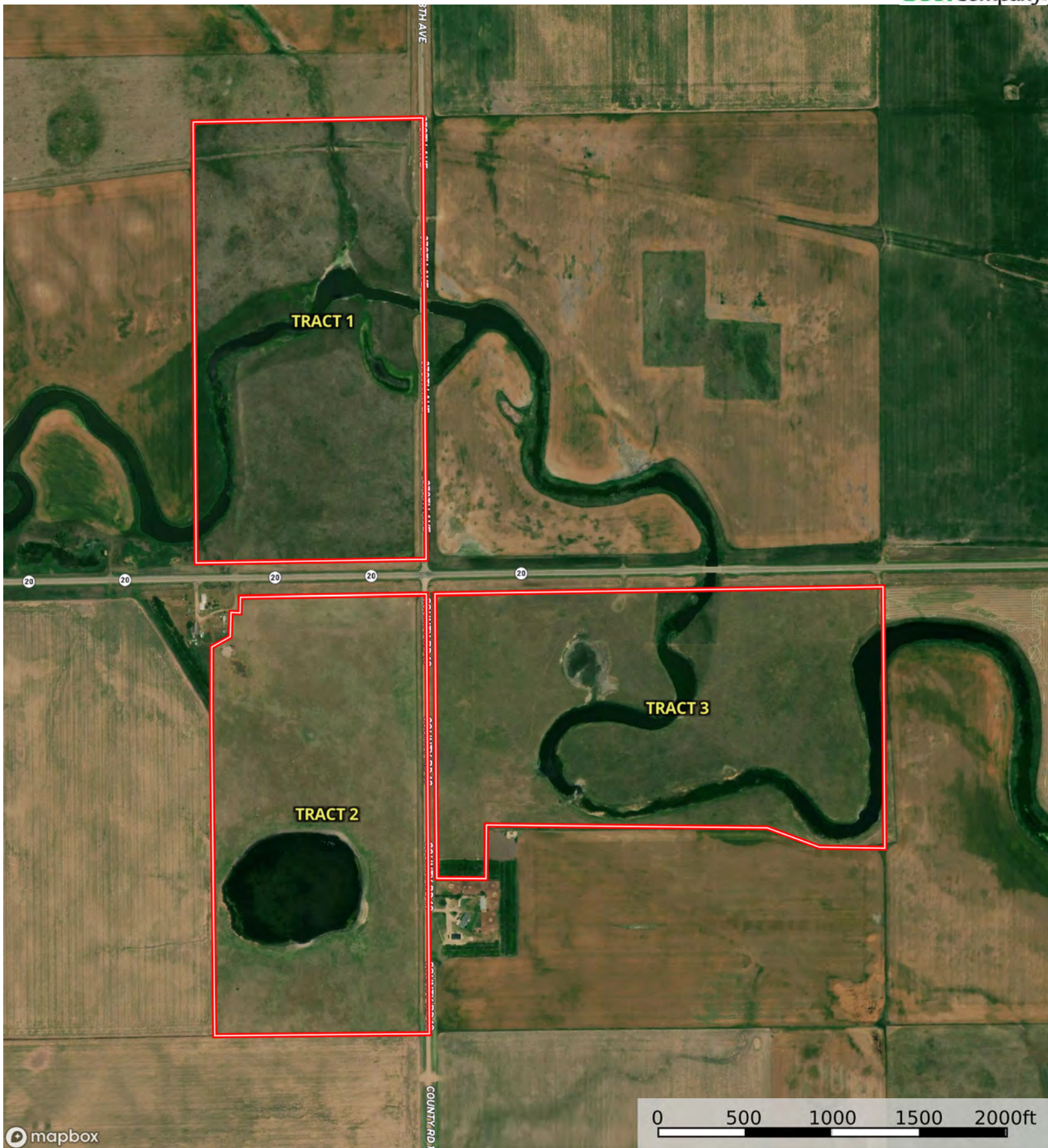
Boundary



The information contained herein was obtained from sources deemed to be reliable. Land id™ Services makes no warranties or guarantees as to the completeness or accuracy thereof.

L-2400490

Spink County, South Dakota, 236.54 AC +/-



Boundary



The information contained herein was obtained from sources deemed to be reliable. Land ID™ Services makes no warranties or guarantees as to the completeness or accuracy thereof.



Boundary



| Boundary 77.15 ac

SOIL CODE	SOIL DESCRIPTION	ACRES	%	CPI	NCCPI	CAP
C491A	Straw-Fluvaquents channeled, complex, 0 to 2 percent slopes, frequently flooded	18.69	24.23	42	28	6w
G557A	Ranslo silty clay loam, 0 to 1 percent slopes, occasionally flooded	18.03	23.37	32	46	4s
C496A	Dovecreek silt loam, 0 to 2 percent slopes	10.42	13.51	90	58	2c
C132B	Williams-Zahl loams, 3 to 6 percent slopes	9.38	12.16	77	50	2e
C578A	Ranslo-Harriet loams, 0 to 2 percent slopes, occasionally flooded	7.08	9.18	29	37	4s
C153E	Zahl-Max loams, 15 to 25 percent slopes	5.1	6.61	31	37	7e
C135C	Zahl-Williams-Zahill complex, 6 to 9 percent slopes	3.4	4.41	57	48	4e
C132C	Williams-Zahl-Zahill complex, 6 to 9 percent slopes	2.75	3.56	61	49	3e
C817A	Lehr-Bowdle loams, 0 to 2 percent slopes	1.77	2.29	54	36	3s
C147B	Williams-Niobell-Tonka complex, 0 to 6 percent slopes	0.41	0.53	74	48	2e
C575A	Ranslo loam, 0 to 2 percent slopes	0.12	0.16	30	40	4s
TOTALS		77.15(*)	100%	50.25	42.29	4.1









(\*) Total acres may differ in the second decimal compared to the sum of each acreage soil. This is due to a round error because we only show the acres of each soil with two decimal.

## Capability Legend

Increased Limitations and Hazards

Decreased Adaptability and Freedom of Choice Users

Land, Capability

								
	1	2	3	4	5	6	7	8
'Wild Life'	•	•	•	•	•	•	•	•
Forestry	•	•	•	•	•	•	•	
Limited	•	•	•	•	•	•	•	
Moderate	•	•	•	•	•	•		
Intense	•	•	•	•	•			
Limited	•	•	•	•				
Moderate	•	•	•					
Intense	•	•						
Very Intense	•							

### Grazing Cultivation

(c) climatic limitations (e) susceptibility to erosion

(s) soil limitations within the rooting zone (w) excess of water

L-2400490

Spink County, South Dakota, 236.54 AC +/-



Boundary



The information contained herein was obtained from sources deemed to be reliable. Land id™ Services makes no warranties or guarantees as to the completeness or accuracy thereof.

| Boundary 71.09 ac

SOIL CODE	SOIL DESCRIPTION	ACRES	%	CPI	NCCPI	CAP
C168B	Max-Arnegard-Zahl loams, 0 to 6 percent slopes	22.26	31.3	78	51	2e
C168C	Max-Zahl-Arnegard loams, 3 to 9 percent slopes	8.28	11.64	65	50	3e
C003A	Parnell silty clay loam, 0 to 1 percent slopes	8.25	11.6	21	31	5w
C661A	Niobell-Noonan loams, 0 to 3 percent slopes	6.37	8.96	63	41	3s
C817B	Lehr-Bowdle loams, 2 to 6 percent slopes	6.36	8.94	50	36	3e
C667A	Williams-Niobell loams, 0 to 3 percent slopes	6.04	8.49	82	49	2c
C817A	Lehr-Bowdle loams, 0 to 2 percent slopes	4.84	6.81	54	36	3s
C147B	Williams-Niobell-Tonka complex, 0 to 6 percent slopes	3.14	4.42	74	48	2e
G557A	Ranslo silty clay loam, 0 to 1 percent slopes, occasionally flooded	2.83	3.98	32	46	4s
C990F	Pits, gravel and sand, 0 to 60 percent slopes	2.72	3.83	13	-	8s
TOTALS		71.09( *)	100%	60.22	42.84	3.02









(\*) Total acres may differ in the second decimal compared to the sum of each acreage soil. This is due to a round error because we only show the acres of each soil with two decimal.

## Capability Legend

Increased Limitations and Hazards

Decreased Adaptability and Freedom of Choice Users

Land, Capability

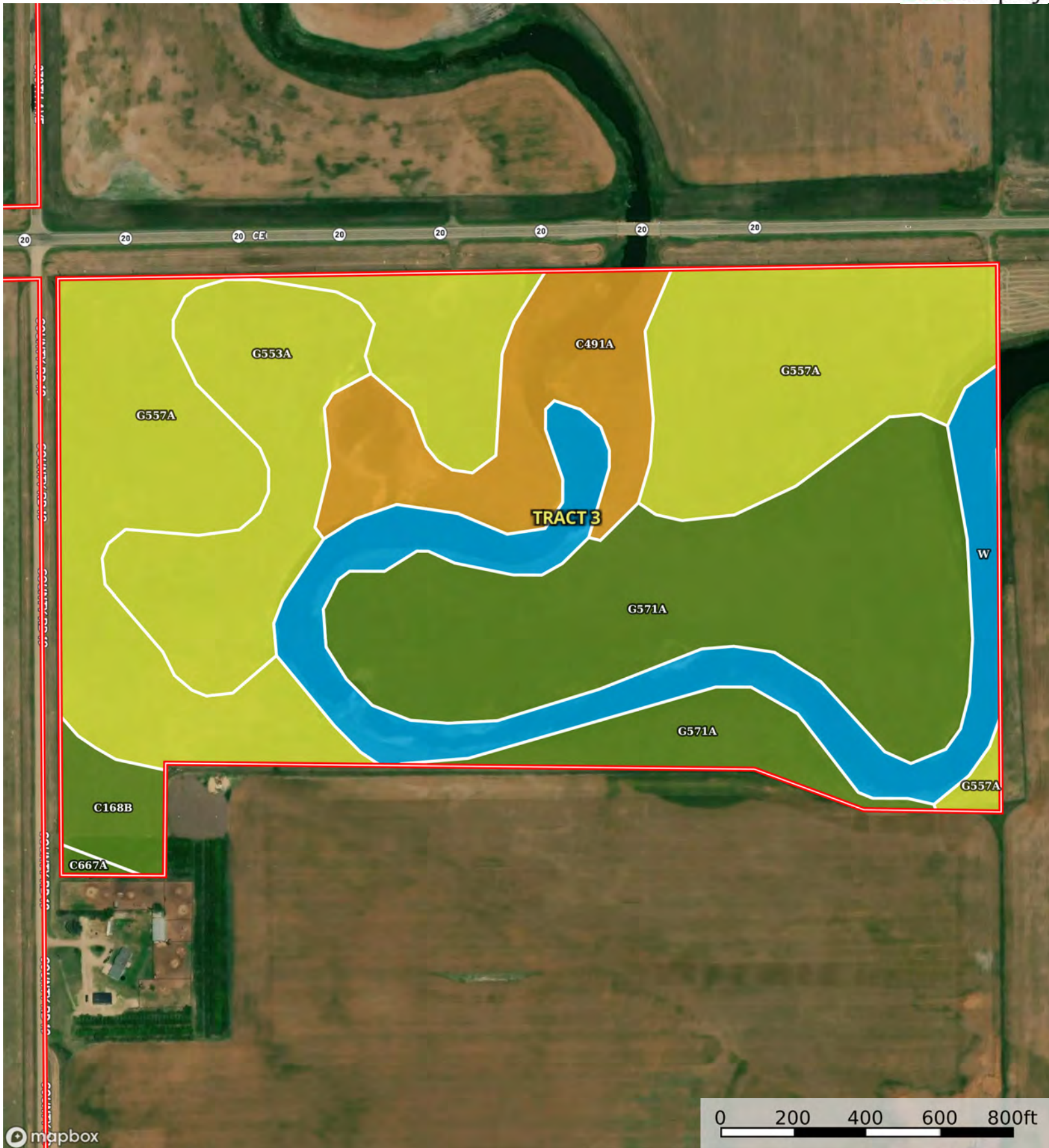
								
	1	2	3	4	5	6	7	8
'Wild Life'	•	•	•	•	•	•	•	•
Forestry	•	•	•	•	•	•	•	
Limited	•	•	•	•	•	•	•	
Moderate	•	•	•	•	•	•		
Intense	•	•	•	•	•			
Limited	•	•	•	•				
Moderate	•	•	•					
Intense	•	•						
Very Intense	•							

### Grazing Cultivation

(c) climatic limitations (e) susceptibility to erosion

(s) soil limitations within the rooting zone (w) excess of water





Boundary



| Boundary 83.88 ac

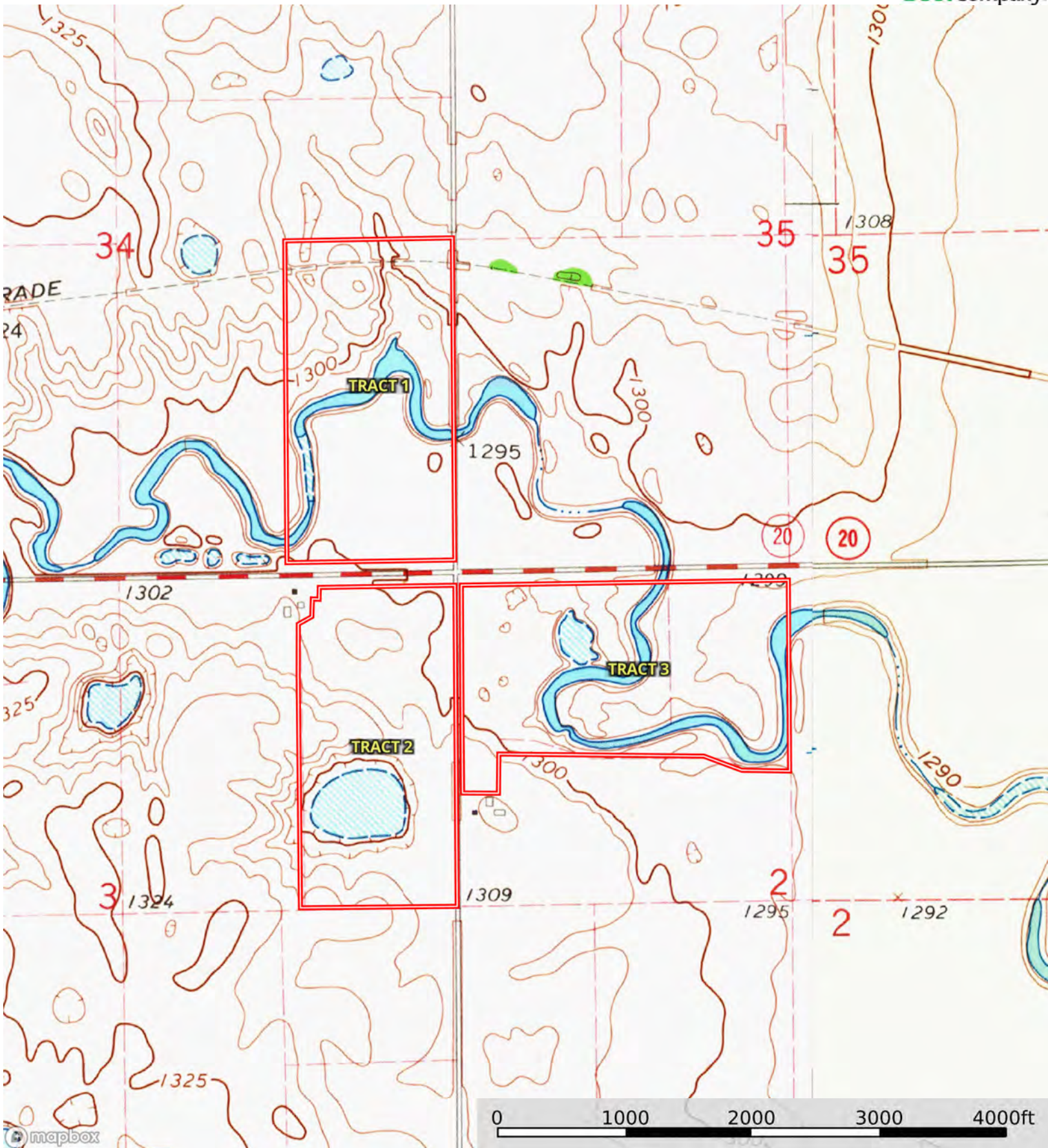
SOIL CODE	SOIL DESCRIPTION	ACRES	%	CPI	NCCPI	CAP
G557A	Ranslo silty clay loam, 0 to 1 percent slopes, occasionally flooded	29.18	34.79	32	46	4s
G571A	LaDelle silt loam, 0 to 2 percent slopes, occasionally flooded	23.88	28.47	92	68	2c
W	Water	11.13	13.27	0	-	8
G553A	Ranslo-Harriet loams, 0 to 2 percent slopes, occasionally flooded	9.25	11.03	27	34	4s
C491A	Straw-Fluvaquents channeled, complex, 0 to 2 percent slopes, frequently flooded	8.22	9.8	42	28	6w
C168B	Max-Arnegard-Zahl loams, 0 to 6 percent slopes	2	2.38	78	51	2e
C667A	Williams-Niobell loams, 0 to 3 percent slopes	0.22	0.26	82	49	2c
TOTALS		83.88(*)	100%	46.49	43.2	4.1

(\*) Total acres may differ in the second decimal compared to the sum of each acreage soil. This is due to a round error because we only show the acres of each soil with two decimal.



L-2400490

Spink County, South Dakota, 236.54 AC +/-



Boundary



The information contained herein was obtained from sources deemed to be reliable. Land id™ Services makes no warranties or guarantees as to the completeness or accuracy thereof.