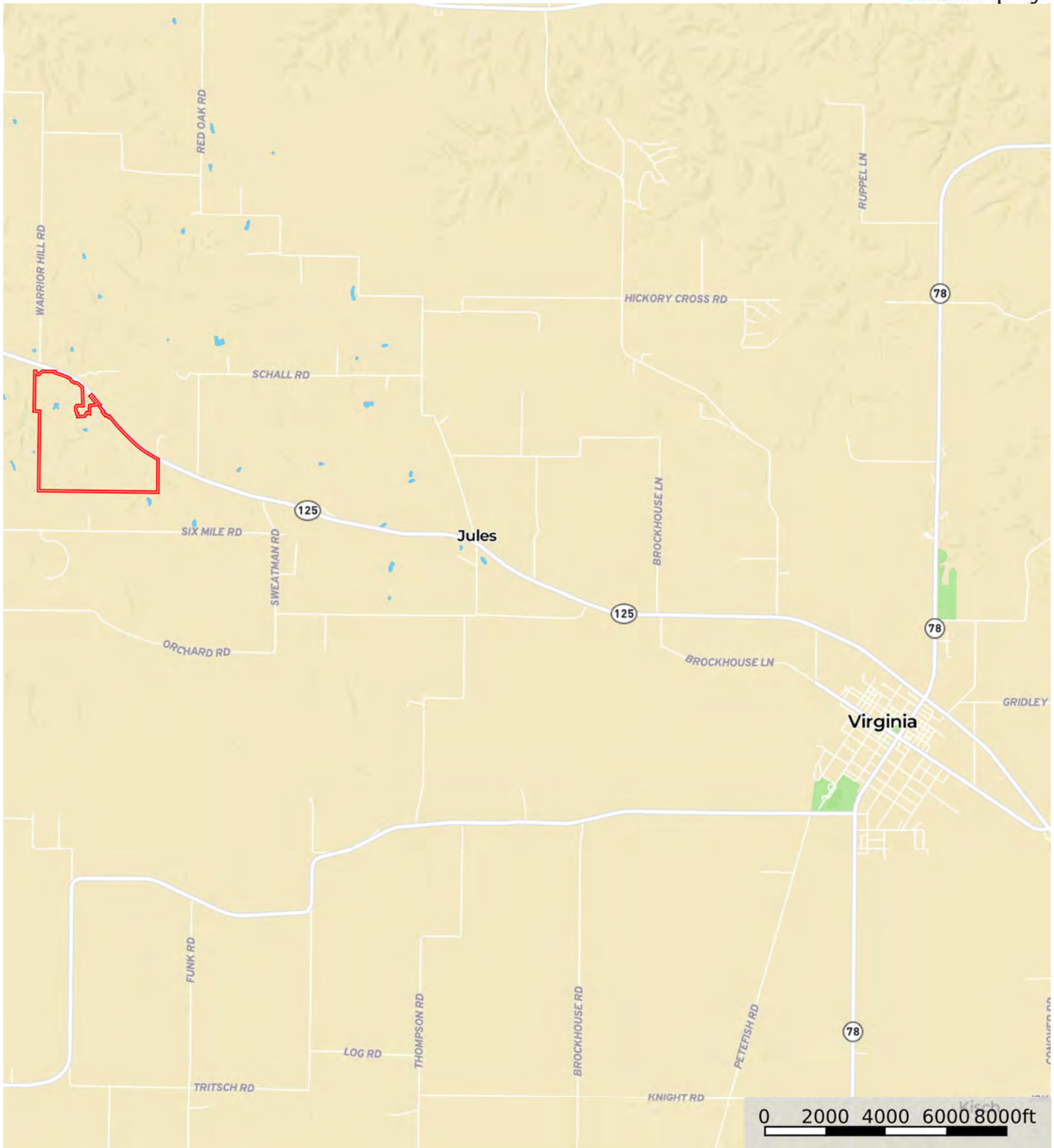
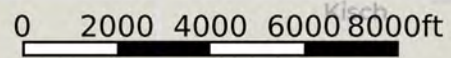


L-2400494

Cass County, Illinois, 247.68 AC +/-



Boundary

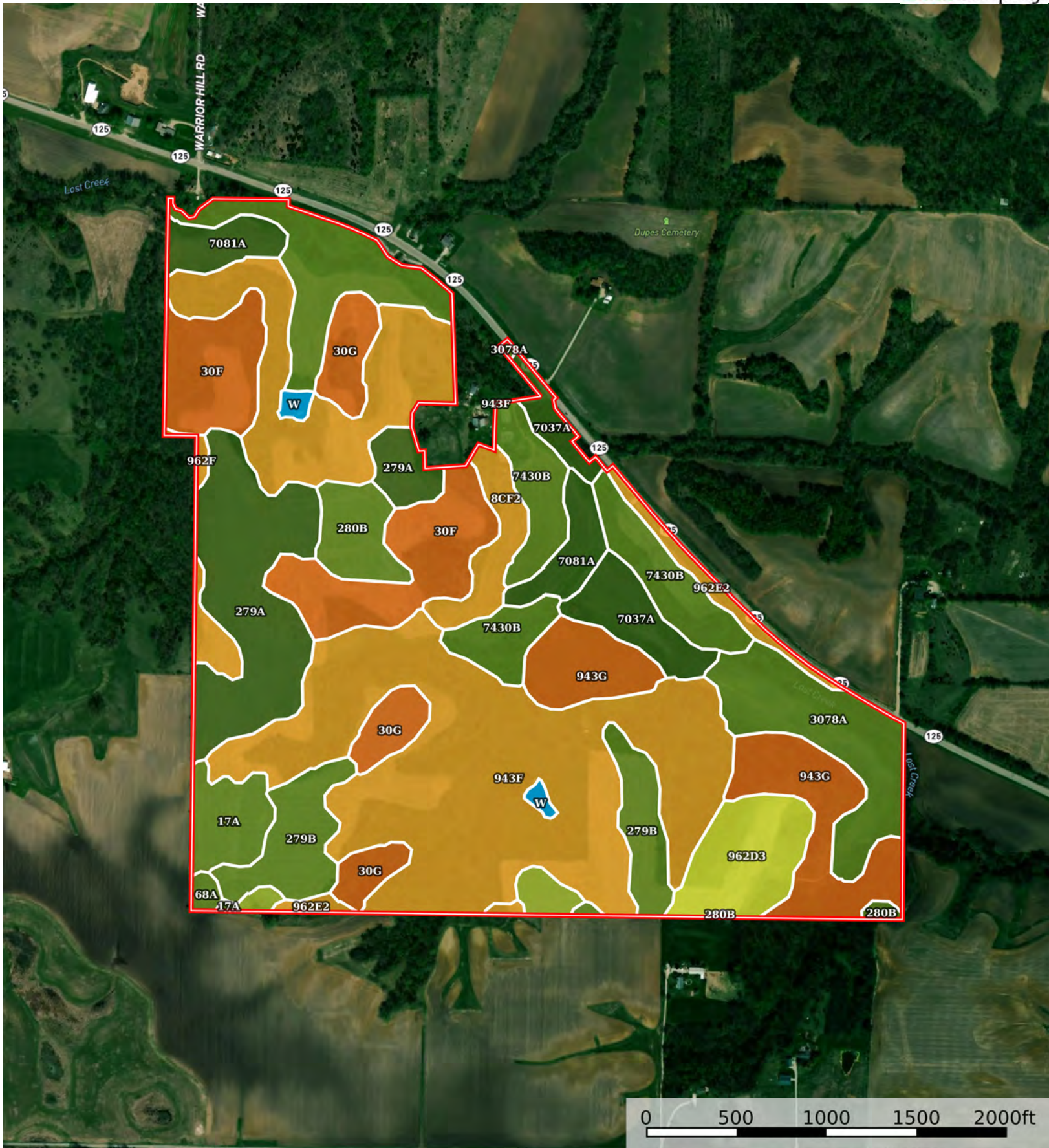


L-2400494

Cass County, Illinois, 247.68 AC +/-



Boundary



Boundary



| Boundary 247.47 ac

SOIL CODE	SOIL DESCRIPTION	ACRES	%	PI	NCCPI	CAP
943F	Seaton-Timula silt loams, 18 to 35 percent slopes	77.47	31.3	84	20	6e
3078A	Arenzville silt loam, 0 to 2 percent slopes, frequently flooded	24.29	9.81	130	86	2w
279A	Rozetta silt loam, 0 to 2 percent slopes	21.88	8.84	120	87	1
30F	Hamburg silt loam, 18 to 35 percent slopes	20.42	8.25	77	16	7e
943G	Seaton-Timula silt loams, 35 to 60 percent slopes	17.04	6.89	55	20	7e
7430B	Raddle silt loam, 2 to 5 percent slopes, rarely flooded	15.66	6.33	137	95	2e
279B	Rozetta silt loam, 2 to 5 percent slopes	11.98	4.84	118	87	2e
962D3	Sylvan-Bold complex, 10 to 18 percent slopes, severely eroded	8.9	3.6	87	64	4e
30G	Hamburg silt loam, 35 to 60 percent slopes	8.79	3.55	50	16	7e
7037A	Worthen silt loam, 0 to 2 percent slopes, rarely flooded	7.89	3.19	142	95	1
7081A	Littleton silt loam, 0 to 2 percent slopes, rarely flooded	7.6	3.07	142	91	1
280B	Fayette silt loam, glaciated, 2 to 5 percent slopes	5.45	2.2	120	89	2e
17A	Keomah silt loam, 0 to 2 percent slopes	5.31	2.15	119	90	2w
8cF2	Hickory silt loam, cool mesic, 18 to 35 percent slopes, eroded	4.92	1.99	62	19	6e
962E2	Sylvan-Bold silt loams, 18 to 25 percent slopes, eroded	3.63	1.47	84	54	6e
962F	Sylvan-Bold silt loams, 18 to 35 percent slopes	2.27	0.92	80	18	6e
280gC2	Fayette silt loam, glaciated, 5 to 10 percent slopes, eroded	2.23	0.9	113	84	3e
W	Water	1.02	0.41	0	-	8w
68A	Sable silty clay loam, 0 to 2 percent slopes	0.72	0.29	143	83	2w
TOTALS		247.47(*)	100%	97.81	50.23	4.32









(*) Total acres may differ in the second decimal compared to the sum of each acreage soil. This is due to a round error because we only show the acres of each soil with two decimal.

Capability Legend

Increased Limitations and Hazards

Decreased Adaptability and Freedom of Choice Users

Land, Capability

								
	1	2	3	4	5	6	7	8
'Wild Life'	•	•	•	•	•	•	•	•
Forestry	•	•	•	•	•	•	•	
Limited	•	•	•	•	•	•	•	
Moderate	•	•	•	•	•	•		
Intense	•	•	•	•	•			
Limited	•	•	•	•				
Moderate	•	•	•					
Intense	•	•						
Very Intense	•							

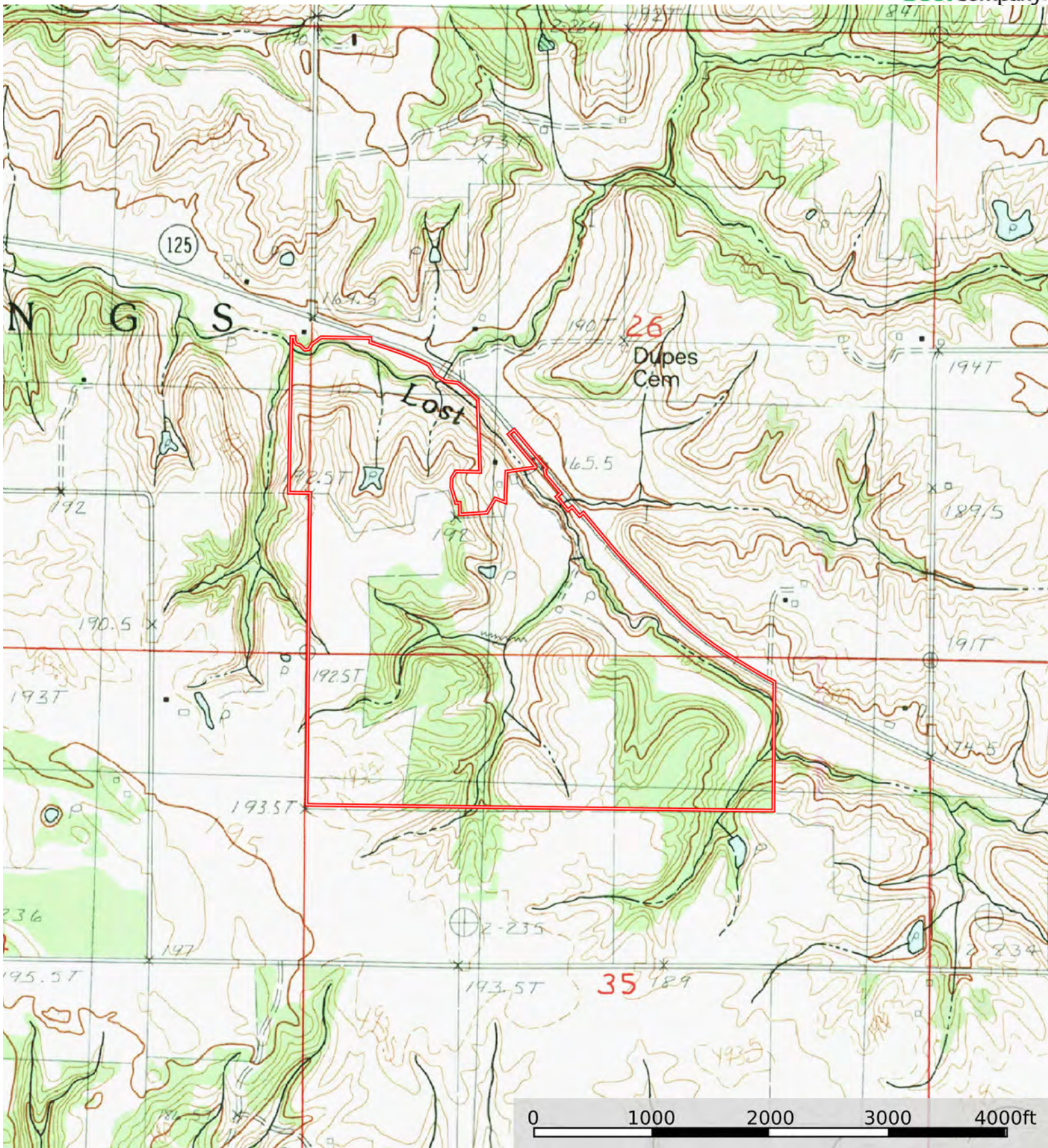
Grazing Cultivation

(c) climatic limitations (e) susceptibility to erosion

(s) soil limitations within the rooting zone (w) excess of water

L-2400494

Cass County, Illinois, 247.68 AC +/-



Boundary