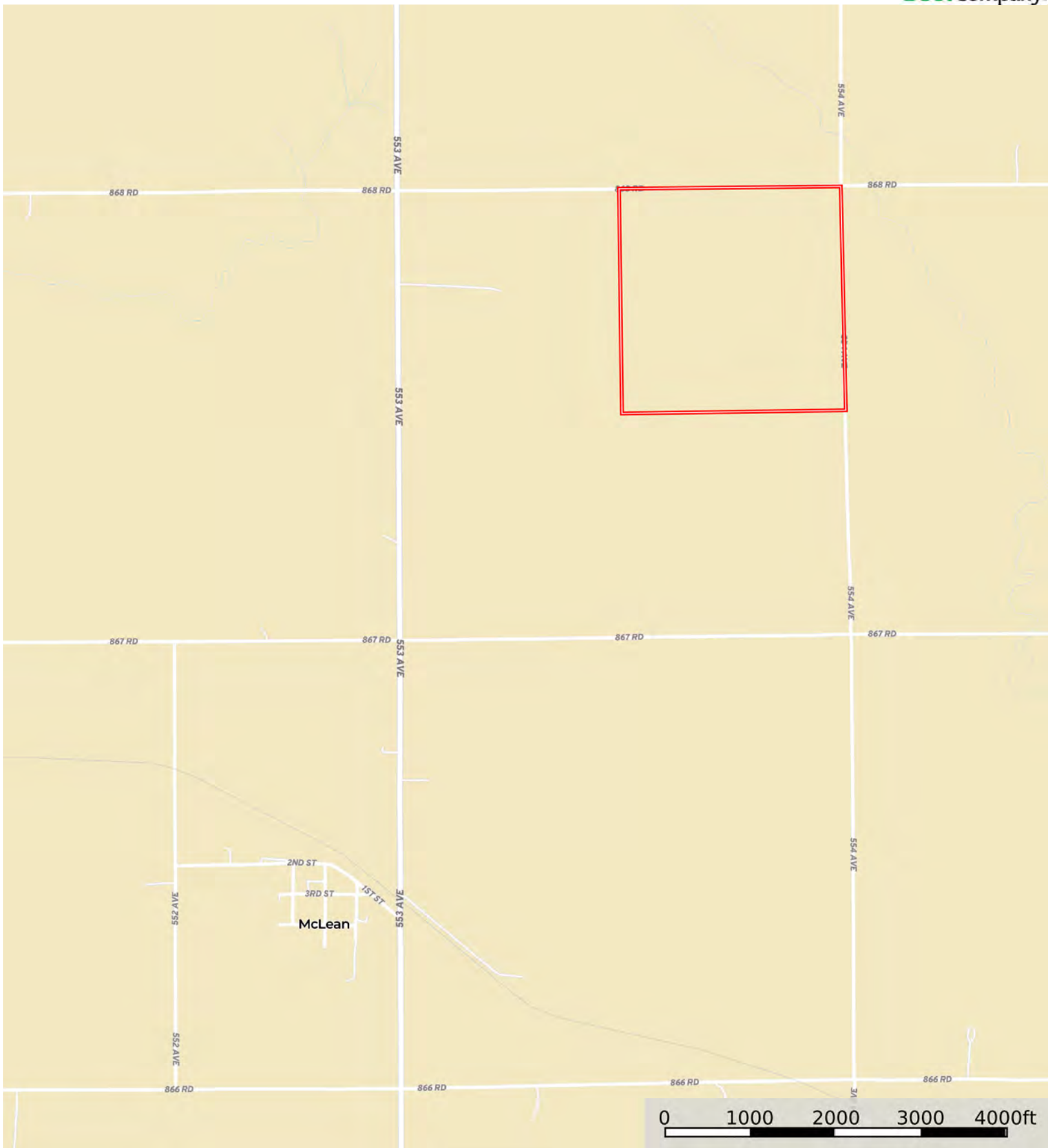


L-2400498

Pierce County, Nebraska, 160 AC +/-



Boundary



The information contained herein was obtained from sources deemed to be reliable. Land ID™ Services makes no warranties or guarantees as to the completeness or accuracy thereof.

L-2400498

Pierce County, Nebraska, 160 AC +/-



Boundary



Boundary

| Boundary 158.21 ac

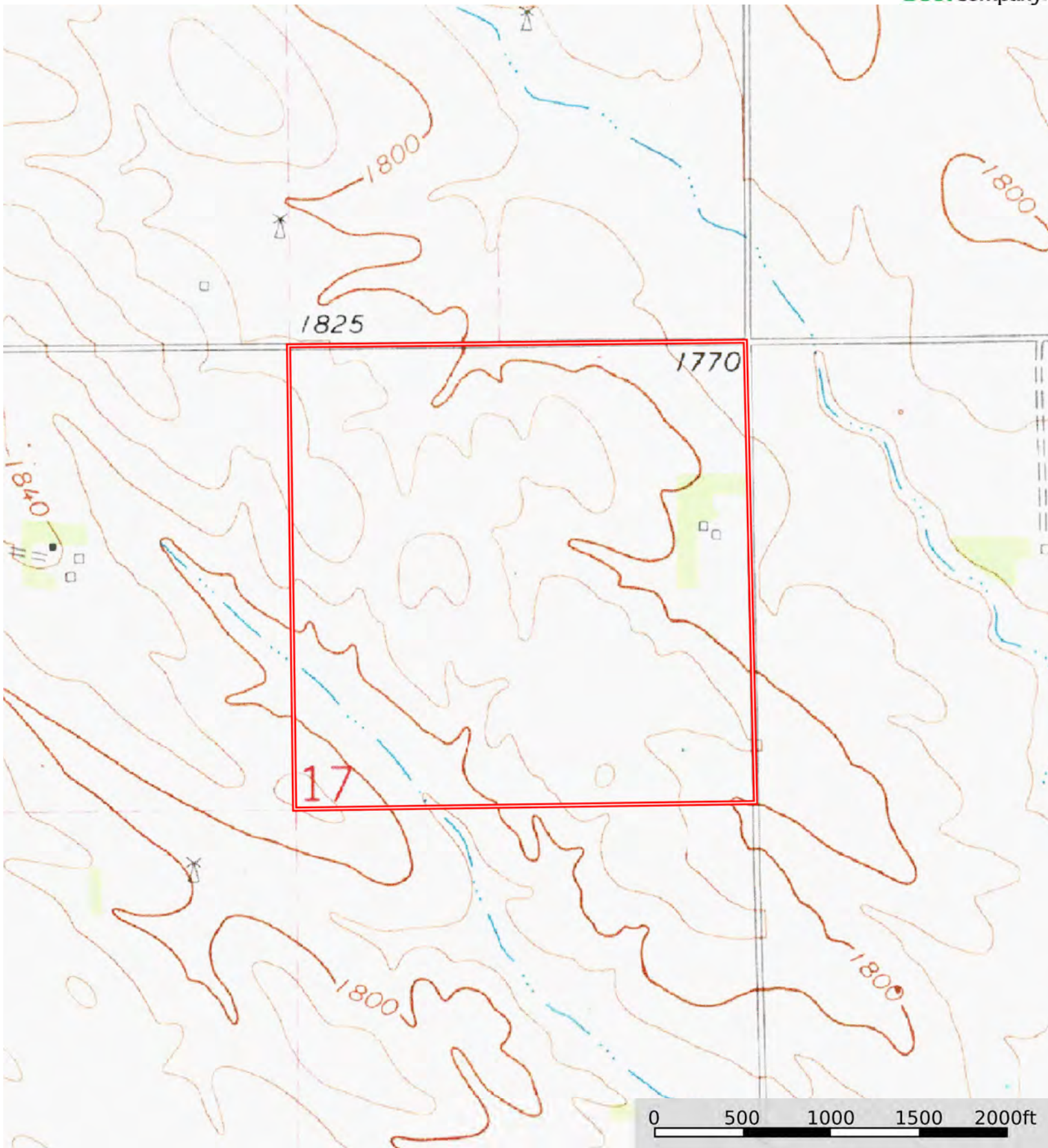
SOIL CODE	SOIL DESCRIPTION	ACRES	%	CPI	NCCPI	CAP
6811	Moody silty clay loam, 2 to 6 percent slopes	43.65	27.59	67	75	2e
6753	Nora silt loam, 2 to 6 percent slopes	31.57	19.96	52	76	2e
6767	Nora silty clay loam, 6 to 11 percent slopes	28.9	18.27	0	75	3e
6694	Crofton-Nora complex, 6 to 11 percent slopes, eroded	26.08	16.49	47	65	4e
6703	Thurman loamy fine sand, 2 to 6 percent slopes	12.13	7.67	45	48	4e
6693	Crofton-Nora complex, 2 to 6 percent slopes, eroded	7.45	4.71	51	67	3e
8882	Hord-Hobbs silt loams, 0 to 6 percent slopes	4.42	2.79	0	71	2e
6329	Lawet loam, occasionally flooded	4.01	2.53	0	66	4w
TOTALS		158.2 1(*)	100%	42.46	70.77	2.76

(*) Total acres may differ in the second decimal compared to the sum of each acreage soil. This is due to a round error because we only show the acres of each soil with two decimal.



L-2400498

Pierce County, Nebraska, 160 AC +/-



Boundary



The information contained herein was obtained from sources deemed to be reliable. Land id™ Services makes no warranties or guarantees as to the completeness or accuracy thereof.