

SCAN THE QR CODE
FOR MORE INFO!



LAND FOR SALE

10.06± Acres, Holt County, Iowa

OFFERED AT
\$100,000

Highlights:

- Excellent deer hunting area
- Secluded location
- Sand creek!



For additional information, please contact:
Dave Hickey, Agent | (402) 340-4436
DHickey@FarmersNational.com



Bryan Hoefler, Agent | (402) 340-4685
BHoefler@FarmersNational.com

Property Information

Directions to Property: Approximately 28 miles northeast of O'Neill, Nebraska, in northeast Holt County.

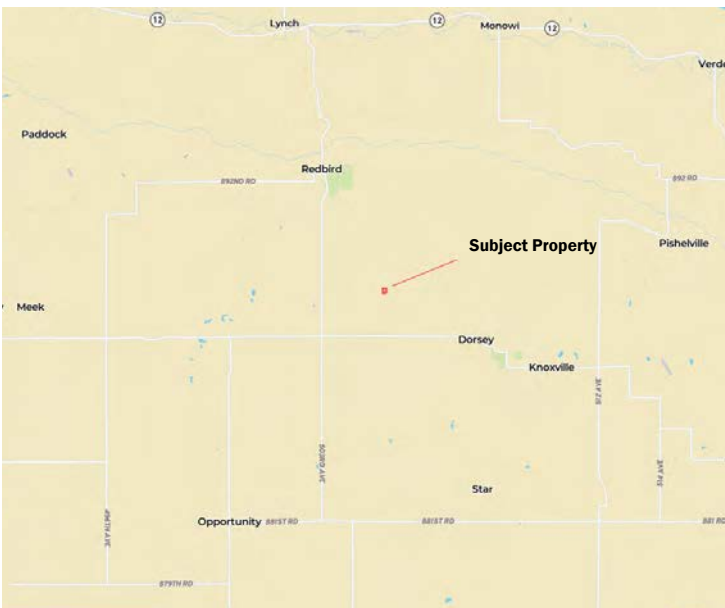
Legal Description: An irregular tract of land located in the West Half (W½) of Section 32, Township 32 North, Range 9 West of the 6th P.M., Holt County, Nebraska.

Property Description: Unique Opportunity! Hard to find building site with electricity, live water, plenty of trees and end-of-the-road privacy packed into 10.06 surveyed acres. Tons of trees on this property, plus Sand Creek runs across the north end of the acreage! If you have been looking for a smaller acreage to build your cabin or hunting camp on, you will appreciate this nice place in northeast Holt County! Seller will retain a life estate in the house.

Call for more information!

Taxes: \$461.28

Location Map



Aerial Map



Soil Map



SOIL CODE	SOIL DESCRIPTION	ACRES	%	CPI	NCCPI	CAP
4498	Dunday loamy sand, 0 to 3 percent slopes	6.84	71.1	0	36	4e
6320	Barney-Boel-Calamus complex, channeled	1.72	17.88	0	13	6w
4882	Valentine-Simeon sands, 9 to 30 percent slopes, eroded	1.06	11.02	0	15	6e
TOTALS		9.62(*)	100%	-	29.57	4.58