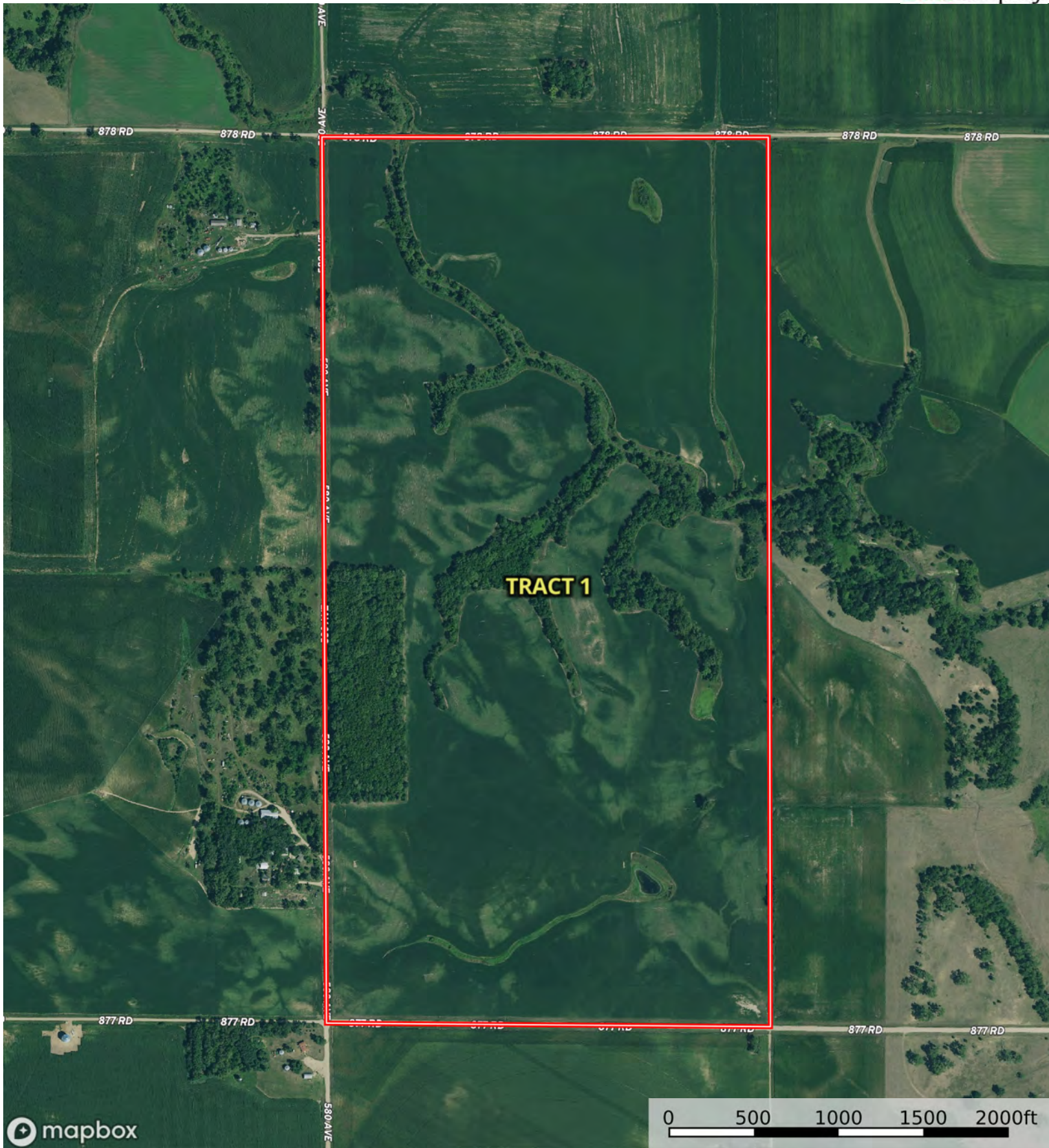


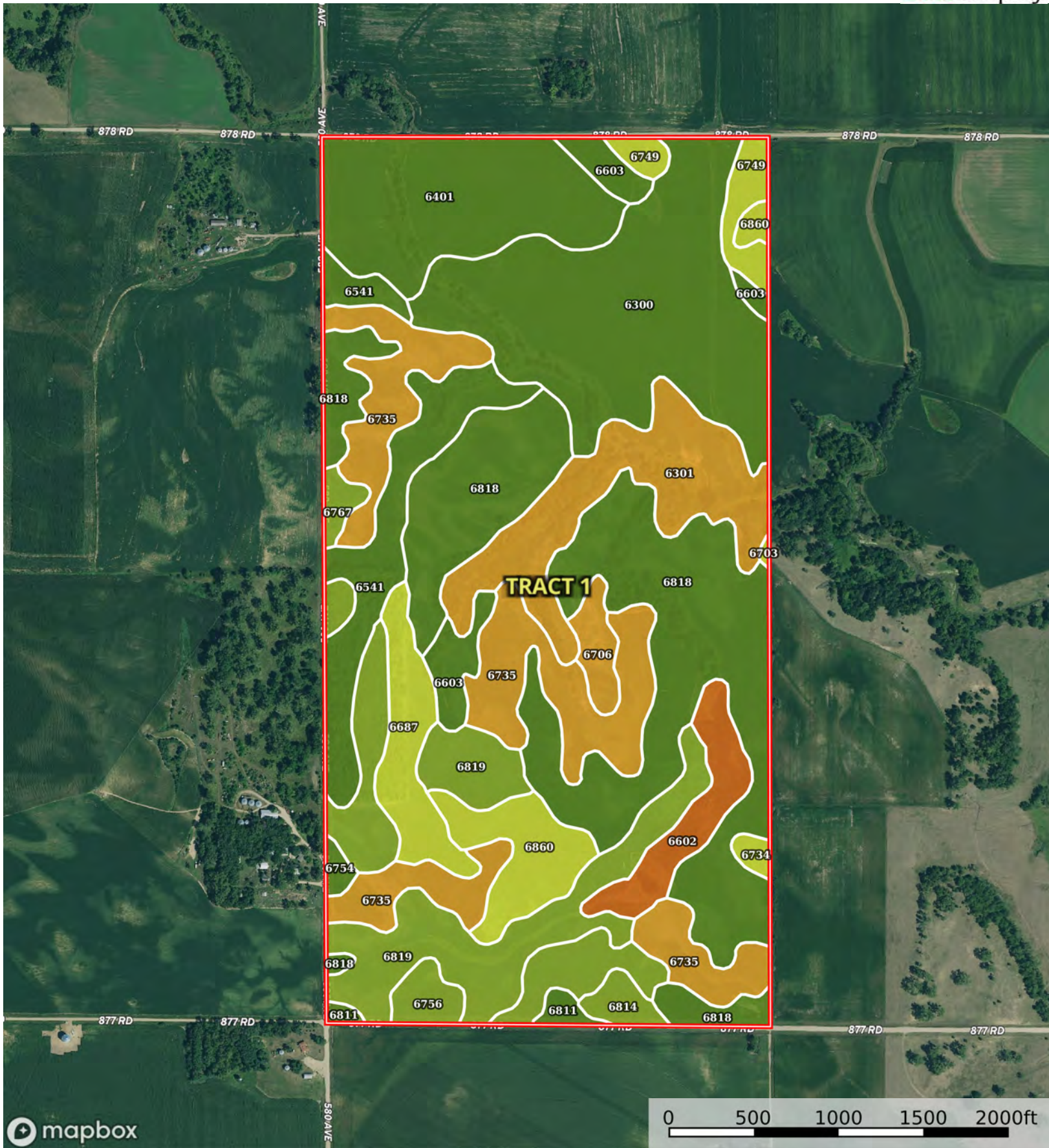
Boundary

L-2400507

Dixon County, Nebraska, 1312.24 AC +/-



Boundary



Boundary



Boundary 318.29 ac

SOIL CODE	SOIL DESCRIPTION	ACRES	%	CPI	NCCPI	CAP
6818	Moody-Leisy complex, 2 to 6 percent slopes	69.19	21.74	0	76	2e
6300	Aowa silt loam, 0 to 3 percent slopes, occasionally flooded	48.08	15.11	0	77	2w
6735	Thurman-Leisy complex, 6 to 11 percent slopes	38.04	11.95	0	54	6e
6401	Calco silty clay loam, 0 to 2 percent slopes, occasionally flooded	27.43	8.62	0	80	2w
6819	Moody-Leisy complex, 6 to 11 percent slopes	25.77	8.1	0	74	3e
6301	Aowa silt loam, channeled, 0 to 3 percent slopes, frequently flooded	23.03	7.24	0	54	6w
6541	Maskell loam, 2 to 6 percent slopes	18.18	5.71	0	82	2e
6860	Crofton silt loam, 8 to 17 percent slopes, eroded	10.42	3.27	0	56	4e
6767	Nora silty clay loam, 6 to 11 percent slopes	9.83	3.09	0	75	3e
6687	Crofton silt loam, 6 to 11 percent slopes, eroded	9.7	3.05	0	67	4e
6756	Nora silt loam, 6 to 11 percent slopes, eroded	8.68	2.73	52	67	3e
6602	Alcester silt loam, gullied, 11 to 60 percent slopes	8.42	2.65	0	41	7e
6603	Alcester silty clay loam, 2 to 6 percent slopes	6.77	2.13	91	76	2e
6749	Nora silt loam, 11 to 17 percent slopes	5.18	1.63	0	73	4e
6706	Thurman loamy fine sand, 6 to 11 percent slopes	3.31	1.04	0	47	6e
6814	Moody silty clay loam, 6 to 11 percent slopes, eroded	2.37	0.74	0	63	3e
6811	Moody silty clay loam, 2 to 6 percent slopes	1.71	0.54	67	75	2e
6734	Thurman-Leisy complex, 2 to 6 percent slopes	1	0.31	0	52	4e
6754	Nora silt loam, 2 to 6 percent slopes, eroded	0.99	0.31	50	69	2e
6703	Thurman loamy fine sand, 2 to 6 percent slopes	0.19	0.06	45	48	4e
TOTALS		318.29(*)	100%	3.9	69.76	3.25









(*) Total acres may differ in the second decimal compared to the sum of each acreage soil. This is due to a round error because we only show the acres of each soil with two decimal.

Capability Legend

Increased Limitations and Hazards

Decreased Adaptability and Freedom of Choice Users

Land, Capability

								
	1	2	3	4	5	6	7	8
'Wild Life'	•	•	•	•	•	•	•	•
Forestry	•	•	•	•	•	•	•	
Limited	•	•	•	•	•	•	•	
Moderate	•	•	•	•	•	•		
Intense	•	•	•	•	•			
Limited	•	•	•	•				
Moderate	•	•	•					
Intense	•	•						
Very Intense	•							

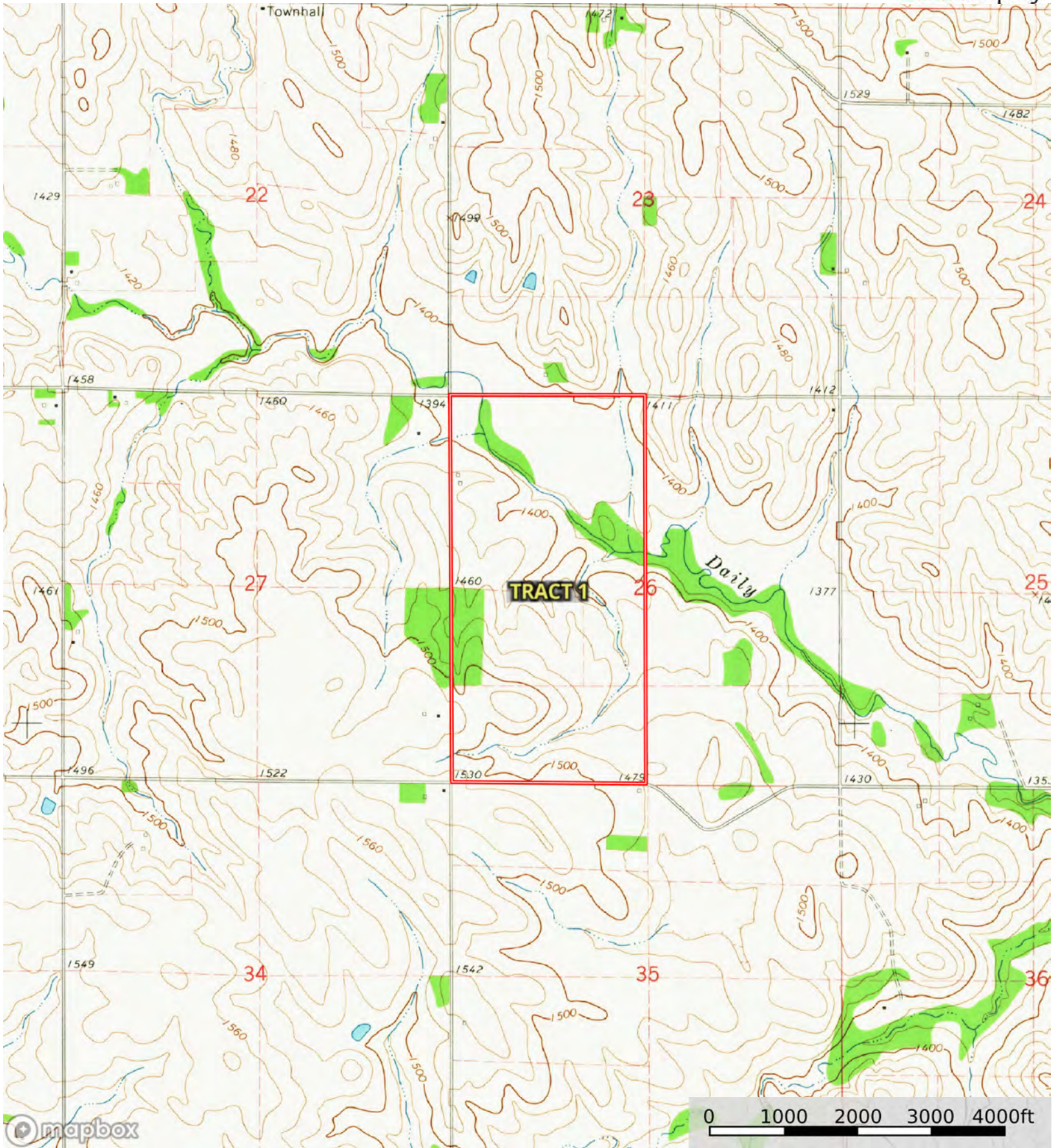
Grazing Cultivation

(c) climatic limitations (e) susceptibility to erosion

(s) soil limitations within the rooting zone (w) excess of water

L-2400507

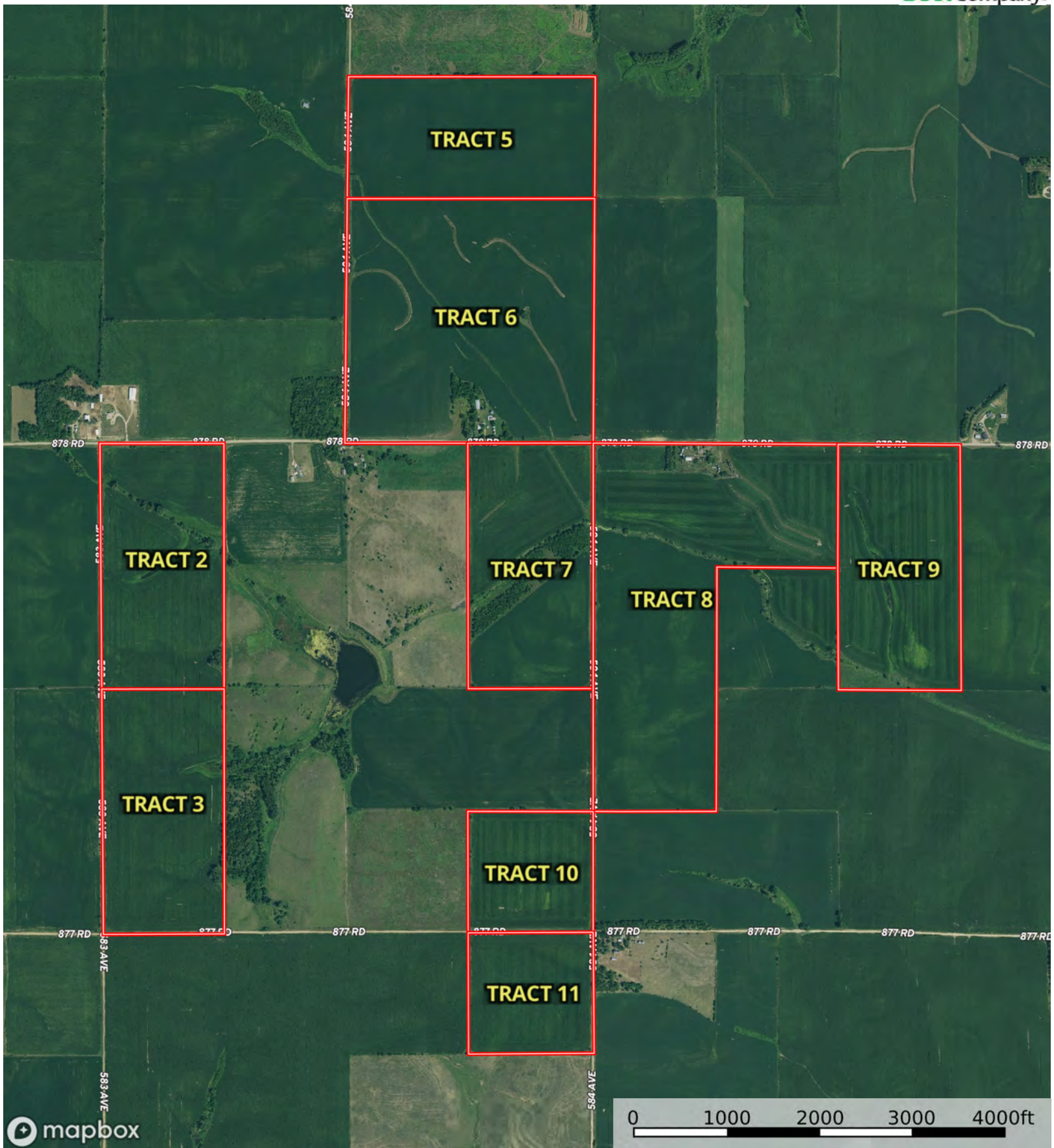
Dixon County, Nebraska, 1312.24 AC +/-



Boundary



The information contained herein was obtained from sources deemed to be reliable. Land id™ Services makes no warranties or guarantees as to the completeness or accuracy thereof.



Boundary



L-2400507

Dixon County, Nebraska, 1312.24 AC +/-



Boundary



Boundary



| Boundary 80.72 ac

SOIL CODE	SOIL DESCRIPTION	ACRES	%	CPI	NCCPI	CAP
6860	Crofton silt loam, 8 to 17 percent slopes, eroded	19.72	24.43	0	56	4e
6603	Alcester silty clay loam, 2 to 6 percent slopes	13.28	16.45	91	76	2e
6753	Nora silt loam, 2 to 6 percent slopes	10.84	13.43	52	76	2e
6300	Aowa silt loam, 0 to 3 percent slopes, occasionally flooded	10.12	12.54	0	77	2w
6687	Crofton silt loam, 6 to 11 percent slopes, eroded	8.32	10.31	0	67	4e
6750	Nora silt loam, 11 to 17 percent slopes, eroded	7.48	9.27	48	63	4e
6767	Nora silty clay loam, 6 to 11 percent slopes	6.04	7.48	0	75	3e
6756	Nora silt loam, 6 to 11 percent slopes, eroded	2.78	3.44	52	67	3e
6681	Crofton silt loam, 17 to 30 percent slopes, eroded	2.14	2.65	0	37	6e
TOTALS		80.72(*)	100%	28.2	67.7	3.1

(*) Total acres may differ in the second decimal compared to the sum of each acreage soil. This is due to a round error because we only show the acres of each soil with two decimal.



L-2400507

Dixon County, Nebraska, 1312.24 AC +/-



Boundary



The information contained herein was obtained from sources deemed to be reliable. Land id™ Services makes no warranties or guarantees as to the completeness or accuracy thereof.

L-2400507

Dixon County, Nebraska, 1312.24 AC +/-



Boundary



The information contained herein was obtained from sources deemed to be reliable. Land id™ Services makes no warranties or guarantees as to the completeness or accuracy thereof.

| Boundary 79.74 ac

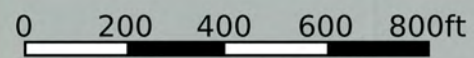
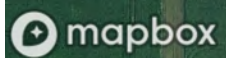
SOIL CODE	SOIL DESCRIPTION	ACRES	%	CPI	NCCPI	CAP
6767	Nora silty clay loam, 6 to 11 percent slopes	17.09	21.43	0	75	3e
6603	Alcester silty clay loam, 2 to 6 percent slopes	15.96	20.01	91	76	2e
6756	Nora silt loam, 6 to 11 percent slopes, eroded	15.17	19.02	52	67	3e
6754	Nora silt loam, 2 to 6 percent slopes, eroded	14.29	17.92	50	69	2e
6687	Crofton silt loam, 6 to 11 percent slopes, eroded	6.85	8.59	0	67	4e
6753	Nora silt loam, 2 to 6 percent slopes	5.6	7.02	52	76	2e
6860	Crofton silt loam, 8 to 17 percent slopes, eroded	4.78	5.99	0	56	4e
TOTALS		79.74(*)	100%	40.71	70.83	2.7

(*) Total acres may differ in the second decimal compared to the sum of each acreage soil. This is due to a round error because we only show the acres of each soil with two decimal.



L-2400507

Dixon County, Nebraska, 1312.24 AC +/-



Boundary



The information contained herein was obtained from sources deemed to be reliable. Land id™ Services makes no warranties or guarantees as to the completeness or accuracy thereof.



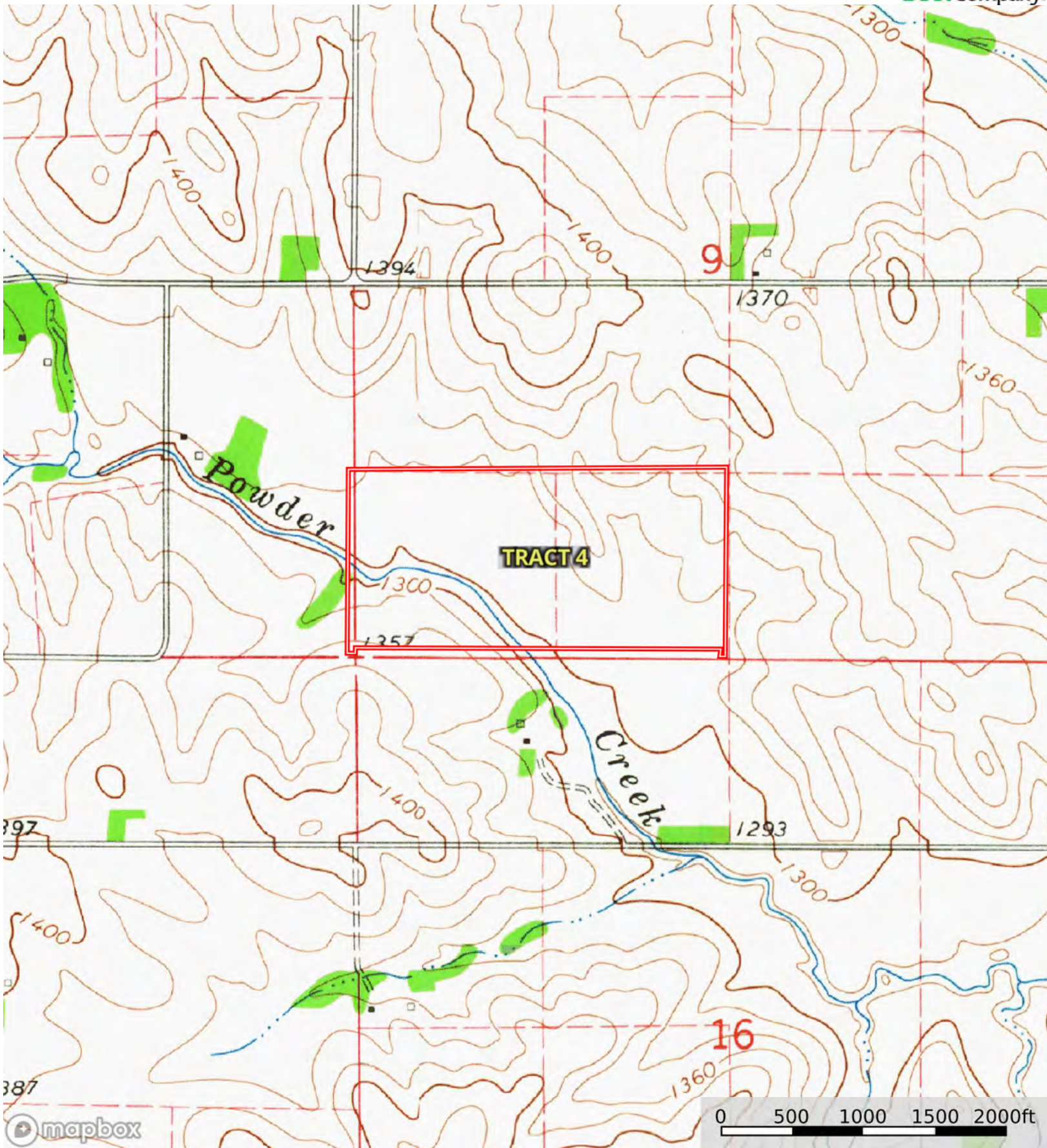
Boundary

| Boundary 77.62 ac

SOIL CODE	SOIL DESCRIPTION	ACRES	%	CPI	NCCPI	CAP
6300	Aowa silt loam, 0 to 3 percent slopes, occasionally flooded	36.54	47.08	0	77	2w
6603	Alcester silty clay loam, 2 to 6 percent slopes	15.98	20.59	91	76	2e
6860	Crofton silt loam, 8 to 17 percent slopes, eroded	8.91	11.48	0	56	4e
6756	Nora silt loam, 6 to 11 percent slopes, eroded	5.3	6.83	52	67	3e
6681	Crofton silt loam, 17 to 30 percent slopes, eroded	4.25	5.48	0	37	6e
6767	Nora silty clay loam, 6 to 11 percent slopes	4.05	5.22	0	75	3e
6750	Nora silt loam, 11 to 17 percent slopes, eroded	2.18	2.81	48	63	4e
6687	Crofton silt loam, 6 to 11 percent slopes, eroded	0.41	0.53	0	67	4e
TOTALS		77.62(*)	100%	23.63	70.96	2.64

(*) Total acres may differ in the second decimal compared to the sum of each acreage soil. This is due to a round error because we only show the acres of each soil with two decimal.





Boundary



L-2400507

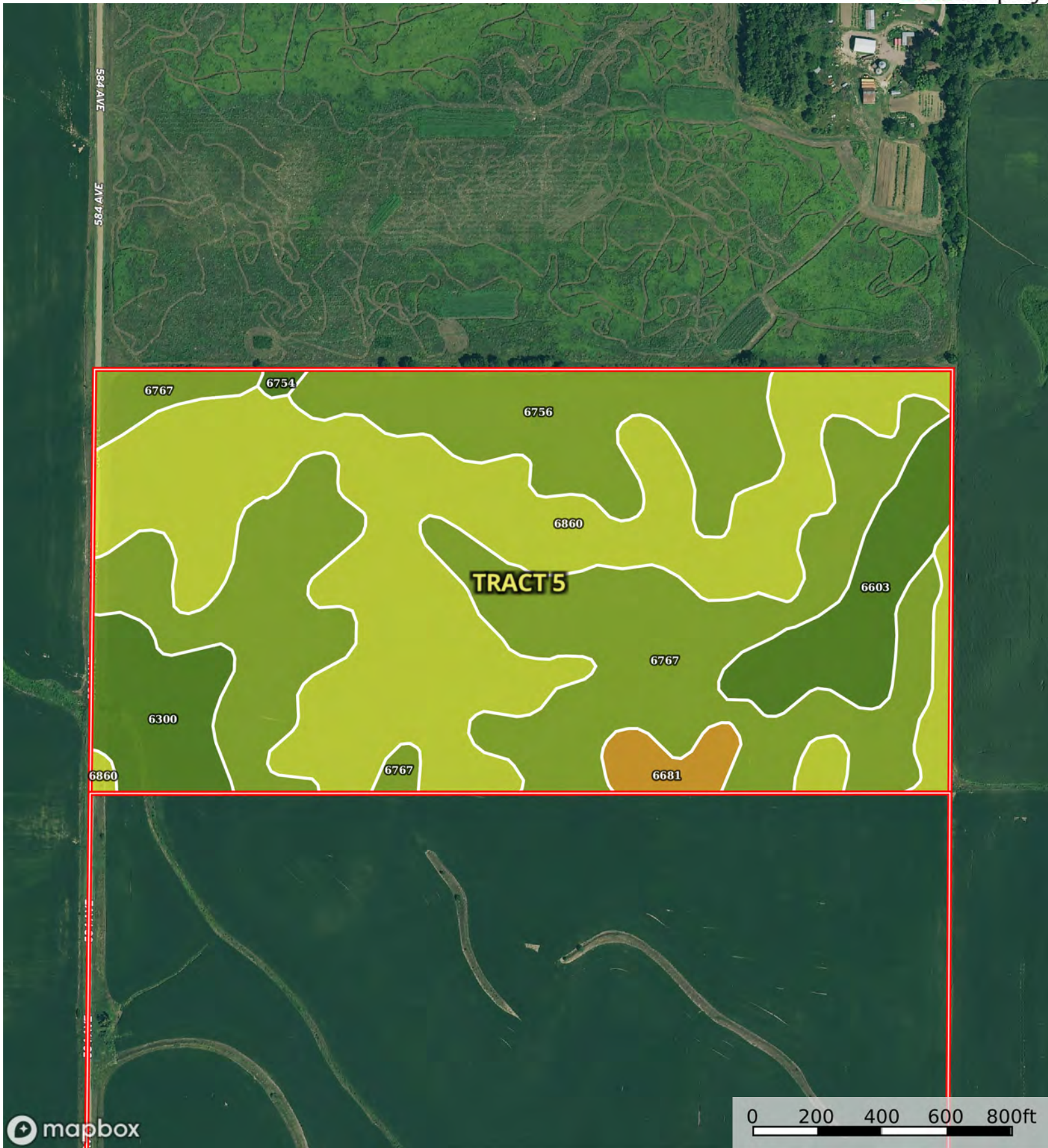
Dixon County, Nebraska, 1312.24 AC +/-



Boundary



The information contained herein was obtained from sources deemed to be reliable. Land id™ Services makes no warranties or guarantees as to the completeness or accuracy thereof.



Boundary



| Boundary 80.44 ac

SOIL CODE	SOIL DESCRIPTION	ACRES	%	CPI	NCCPI	CAP
6860	Crofton silt loam, 8 to 17 percent slopes, eroded	30.82	38.31	0	56	4e
6767	Nora silty clay loam, 6 to 11 percent slopes	28.08	34.91	0	75	3e
6756	Nora silt loam, 6 to 11 percent slopes, eroded	9.91	12.32	52	67	3e
6603	Alcester silty clay loam, 2 to 6 percent slopes	5.38	6.69	91	76	2e
6300	Aowa silt loam, 0 to 3 percent slopes, occasionally flooded	4.46	5.54	0	77	2w
6681	Crofton silt loam, 17 to 30 percent slopes, eroded	1.57	1.95	0	37	6e
6754	Nora silt loam, 2 to 6 percent slopes, eroded	0.22	0.27	50	69	2e
TOTALS		80.44(*)	100%	12.63	66.15	3.32

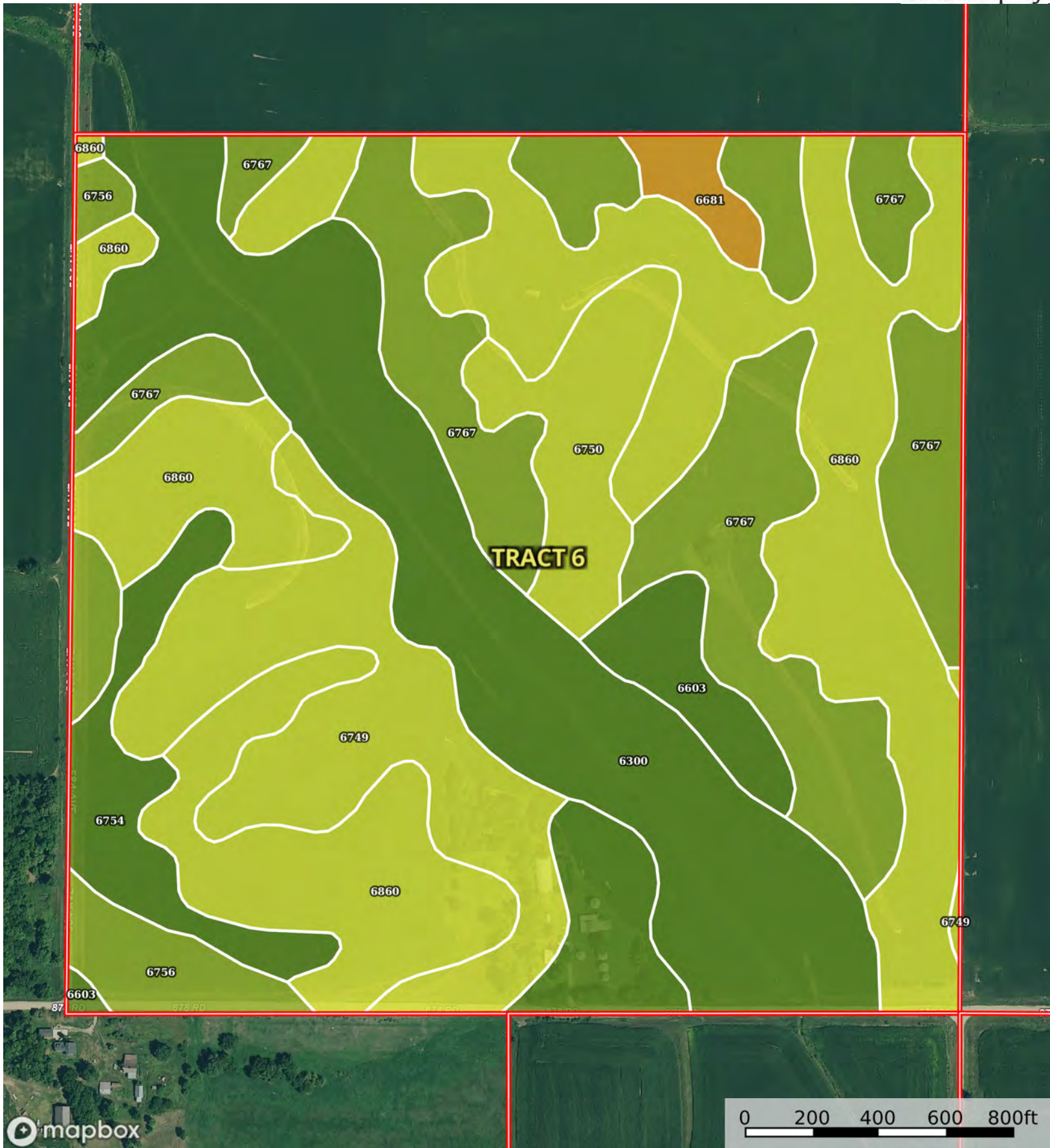
(*) Total acres may differ in the second decimal compared to the sum of each acreage soil. This is due to a round error because we only show the acres of each soil with two decimal.





Boundary





Boundary



| Boundary 162.04 ac

SOIL CODE	SOIL DESCRIPTION	ACRES	%	CPI	NCCPI	CAP
6860	Crofton silt loam, 8 to 17 percent slopes, eroded	49.65	30.64	0	56	4e
6767	Nora silty clay loam, 6 to 11 percent slopes	33.66	20.78	0	75	3e
6300	Aowa silt loam, 0 to 3 percent slopes, occasionally flooded	31.7	19.57	0	77	2w
6749	Nora silt loam, 11 to 17 percent slopes	18.35	11.33	0	73	4e
6603	Alcester silty clay loam, 2 to 6 percent slopes	8.66	5.35	91	76	2e
6750	Nora silt loam, 11 to 17 percent slopes, eroded	7.39	4.56	48	63	4e
6754	Nora silt loam, 2 to 6 percent slopes, eroded	6.4	3.95	50	69	2e
6756	Nora silt loam, 6 to 11 percent slopes, eroded	4.32	2.67	52	67	3e
6681	Crofton silt loam, 17 to 30 percent slopes, eroded	1.91	1.18	0	37	6e
TOTALS		162.04(*)	100%	10.41	67.96	3.21

(*) Total acres may differ in the second decimal compared to the sum of each acreage soil. This is due to a round error because we only show the acres of each soil with two decimal.

