

L-2400507

Dixon County, Nebraska, 1312.24 AC +/-

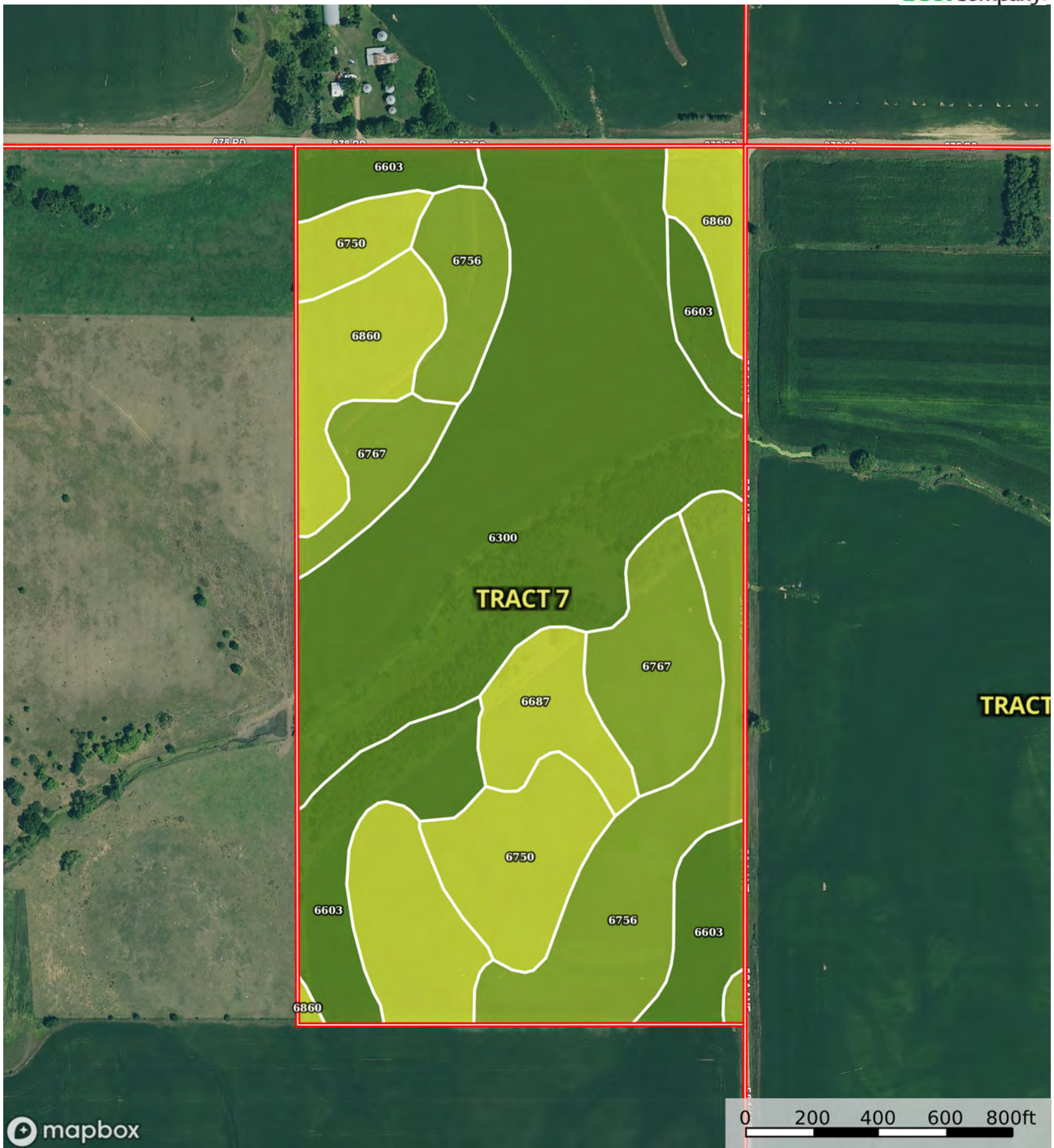


Boundary



The information contained herein was obtained from sources deemed to be reliable. Land id™ Services makes no warranties or guarantees as to the completeness or accuracy thereof.





Boundary

| Boundary 82.01 ac

SOIL CODE	SOIL DESCRIPTION	ACRES	%	CPI	NCCPI	CAP
6300	Aowa silt loam, 0 to 3 percent slopes, occasionally flooded	28.96	35.31	0	77	2w
6756	Nora silt loam, 6 to 11 percent slopes, eroded	11.94	14.56	52	67	3e
6603	Alcester silty clay loam, 2 to 6 percent slopes	11.69	14.25	91	76	2e
6860	Crofton silt loam, 8 to 17 percent slopes, eroded	11.32	13.8	0	56	4e
6767	Nora silty clay loam, 6 to 11 percent slopes	7.76	9.46	0	75	3e
6750	Nora silt loam, 11 to 17 percent slopes, eroded	6.88	8.39	48	63	4e
6687	Crofton silt loam, 6 to 11 percent slopes, eroded	3.46	4.22	0	67	4e
TOTALS		82.01(*)	100%	24.57	70.71	2.77

(\*) Total acres may differ in the second decimal compared to the sum of each acreage soil. This is due to a round error because we only show the acres of each soil with two decimal.



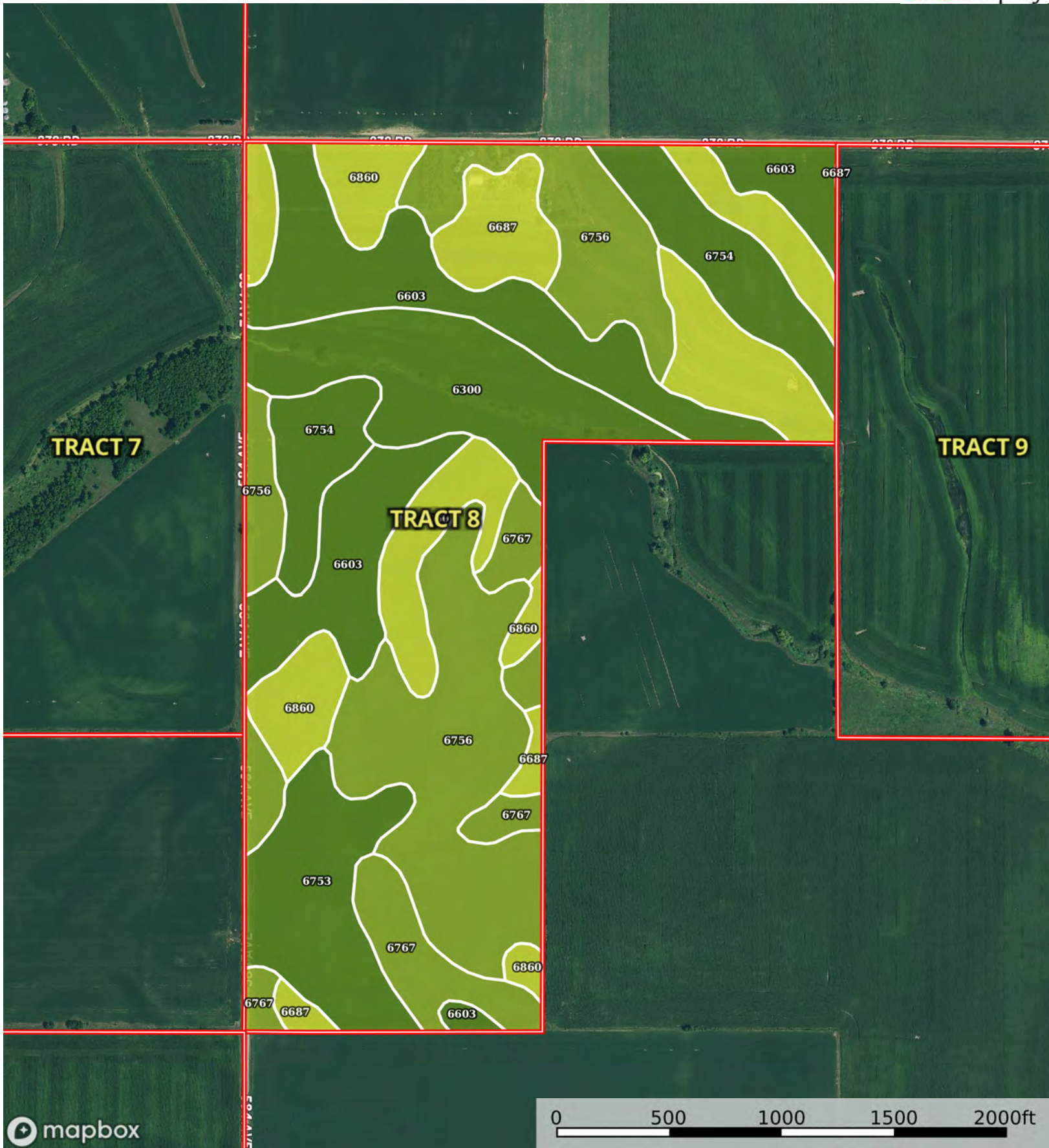




Boundary







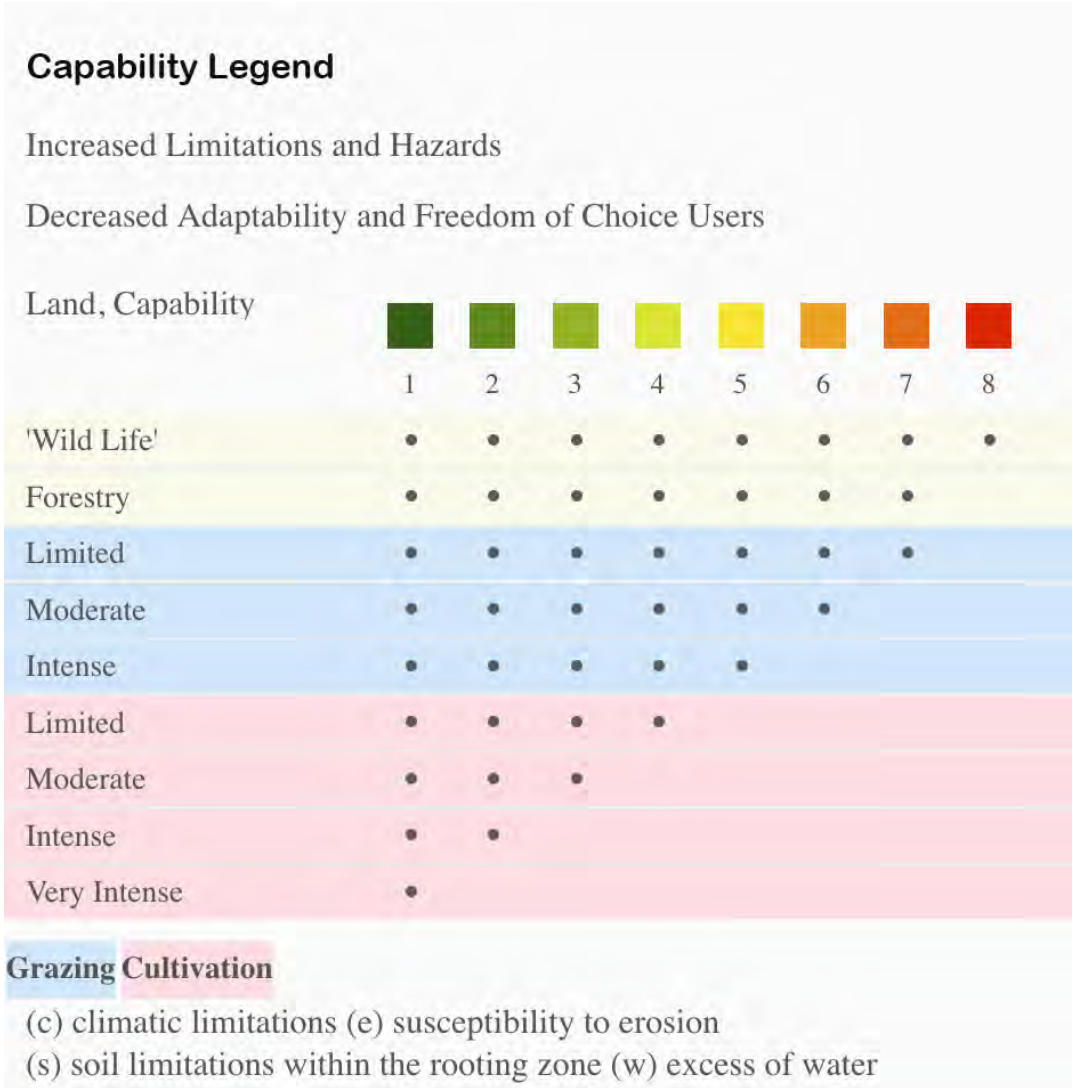
Boundary



| Boundary 161.32 ac

SOIL CODE	SOIL DESCRIPTION	ACRES	%	CPI	NCCPI	CAP
6756	Nora silt loam, 6 to 11 percent slopes, eroded	39.79	24.67	52	67	3e
6603	Alcester silty clay loam, 2 to 6 percent slopes	30.72	19.05	91	76	2e
6860	Crofton silt loam, 8 to 17 percent slopes, eroded	28.38	17.59	0	56	4e
6300	Aowa silt loam, 0 to 3 percent slopes, occasionally flooded	16.72	10.37	0	77	2w
6754	Nora silt loam, 2 to 6 percent slopes, eroded	14.48	8.98	50	69	2e
6753	Nora silt loam, 2 to 6 percent slopes	13.08	8.11	52	76	2e
6767	Nora silty clay loam, 6 to 11 percent slopes	11.06	6.86	0	75	3e
6687	Crofton silt loam, 6 to 11 percent slopes, eroded	7.09	4.4	0	67	4e
TOTALS		161.32(*)	100%	38.86	69.28	2.75

(\*) Total acres may differ in the second decimal compared to the sum of each acreage soil. This is due to a round error because we only show the acres of each soil with two decimal.





L-2400507

Dixon County, Nebraska, 1312.24 AC +/-



Boundary



The information contained herein was obtained from sources deemed to be reliable. Land id™ Services makes no warranties or guarantees as to the completeness or accuracy thereof.





Boundary



| Boundary 80.29 ac

SOIL CODE	SOIL DESCRIPTION	ACRES	%	CPI	NCCPI	CAP
6603	Alcester silty clay loam, 2 to 6 percent slopes	31.27	38.95	91	76	2e
6860	Crofton silt loam, 8 to 17 percent slopes, eroded	21.3	26.53	0	56	4e
6300	Aowa silt loam, 0 to 3 percent slopes, occasionally flooded	8.97	11.17	0	77	2w
6767	Nora silty clay loam, 6 to 11 percent slopes	7.89	9.83	0	75	3e
6753	Nora silt loam, 2 to 6 percent slopes	4.54	5.65	52	76	2e
6681	Crofton silt loam, 17 to 30 percent slopes, eroded	3.34	4.16	0	37	6e
6687	Crofton silt loam, 6 to 11 percent slopes, eroded	1.26	1.57	0	67	4e
6754	Nora silt loam, 2 to 6 percent slopes, eroded	1.18	1.47	50	69	2e
6749	Nora silt loam, 11 to 17 percent slopes	0.54	0.67	0	73	4e
TOTALS		80.29(*)	100%	39.12	68.82	2.84

(\*) Total acres may differ in the second decimal compared to the sum of each acreage soil. This is due to a round error because we only show the acres of each soil with two decimal.





L-2400507

Dixon County, Nebraska, 1312.24 AC +/-



Boundary



The information contained herein was obtained from sources deemed to be reliable. Land id™ Services makes no warranties or guarantees as to the completeness or accuracy thereof.



L-2400507

Dixon County, Nebraska, 1312.24 AC +/-



Boundary



| Boundary 40.51 ac

SOIL CODE	SOIL DESCRIPTION	ACRES	%	CPI	NCCPI	CAP
6767	Nora silty clay loam, 6 to 11 percent slopes	19.96	49.27	0	75	3e
6753	Nora silt loam, 2 to 6 percent slopes	15.12	37.32	52	76	2e
6603	Alcester silty clay loam, 2 to 6 percent slopes	3.35	8.27	91	76	2e
6754	Nora silt loam, 2 to 6 percent slopes, eroded	2.08	5.13	50	69	2e
TOTALS		40.51(*)	100%	29.5	75.15	2.49

(\*) Total acres may differ in the second decimal compared to the sum of each acreage soil. This is due to a round error because we only show the acres of each soil with two decimal.





L-2400507

Dixon County, Nebraska, 1312.24 AC +/-



mapbox

Boundary





Boundary





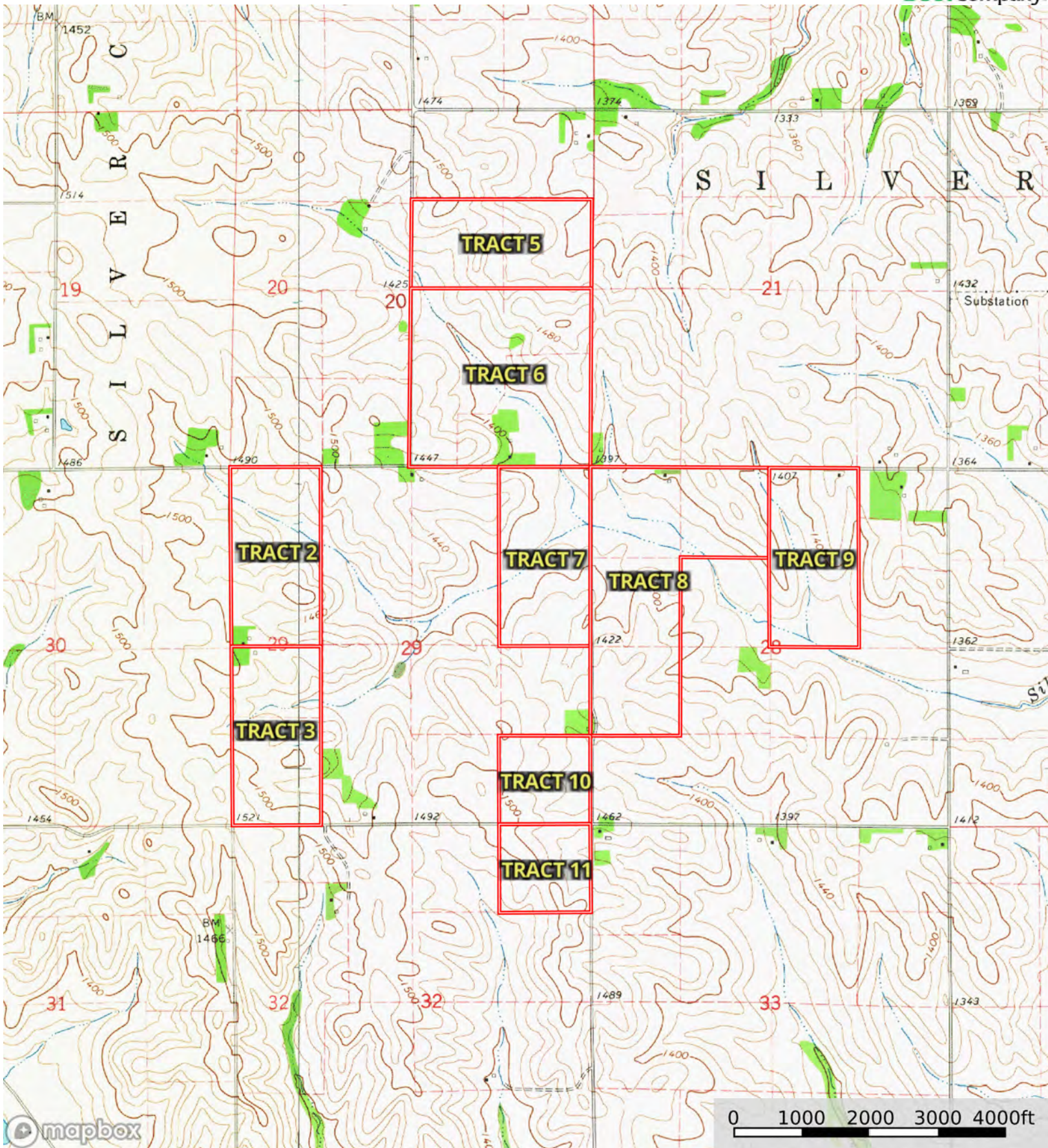
| Boundary 40.57 ac

SOIL CODE	SOIL DESCRIPTION	ACRES	%	CPI	NCCPI	CAP
6750	Nora silt loam, 11 to 17 percent slopes, eroded	13.57	33.45	48	63	4e
6767	Nora silty clay loam, 6 to 11 percent slopes	11.54	28.44	0	75	3e
6753	Nora silt loam, 2 to 6 percent slopes	10.73	26.45	52	76	2e
6603	Alcester silty clay loam, 2 to 6 percent slopes	3.89	9.59	91	76	2e
6754	Nora silt loam, 2 to 6 percent slopes, eroded	0.84	2.07	50	69	2e
TOTALS		40.57(*)	100%	39.57	71.22	2.95

(\*) Total acres may differ in the second decimal compared to the sum of each acreage soil. This is due to a round error because we only show the acres of each soil with two decimal.





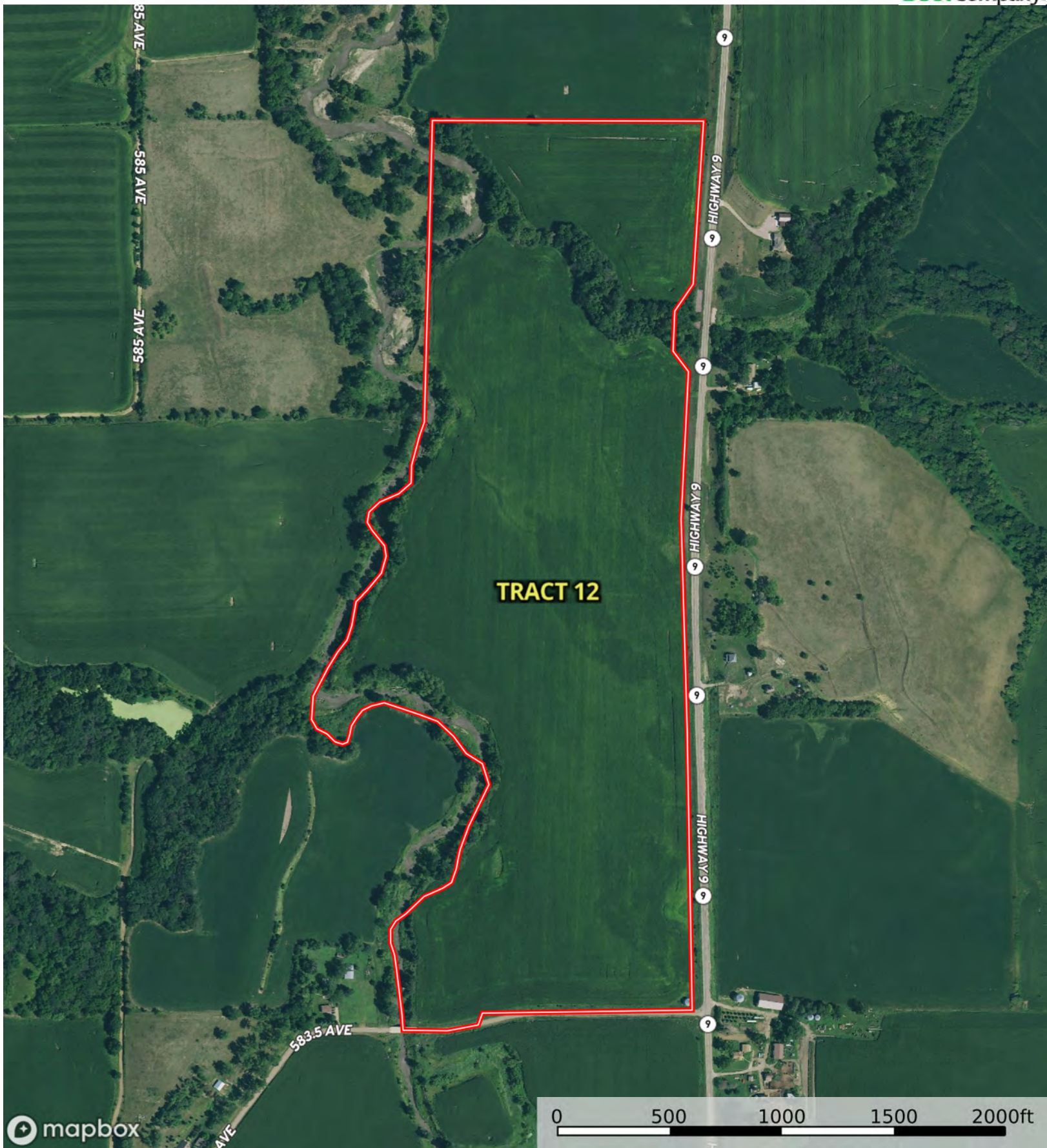


Boundary



L-2400507

Dixon County, Nebraska, 1312.24 AC +/-



Boundary



The information contained herein was obtained from sources deemed to be reliable. Land ID™ Services makes no warranties or guarantees as to the completeness or accuracy thereof.



L-2400507

Dixon County, Nebraska, 1312.24 AC +/-



Boundary



The information contained herein was obtained from sources deemed to be reliable. Land id™ Services makes no warranties or guarantees as to the completeness or accuracy thereof.



| Boundary 114.01 ac

SOIL CODE	SOIL DESCRIPTION	ACRES	%	CPI	NCCPI	CAP
7153	Kennebec silt loam, 0 to 3 percent slopes, rarely flooded	54.84	48.11	0	96	1
6300	Aowa silt loam, 0 to 3 percent slopes, occasionally flooded	21.48	18.84	0	77	2w
6603	Alcester silty clay loam, 2 to 6 percent slopes	20.65	18.11	91	76	2e
6767	Nora silty clay loam, 6 to 11 percent slopes	11.02	9.67	0	75	3e
9999	Water	3.84	3.37	0	-	-
6860	Crofton silt loam, 8 to 17 percent slopes, eroded	2.15	1.89	0	56	4e
6602	Alcester silt loam, gullied, 11 to 60 percent slopes	0.03	0.03	0	41	7e
TOTALS		114.0 1(*)	100%	16.48	82.77	1.64

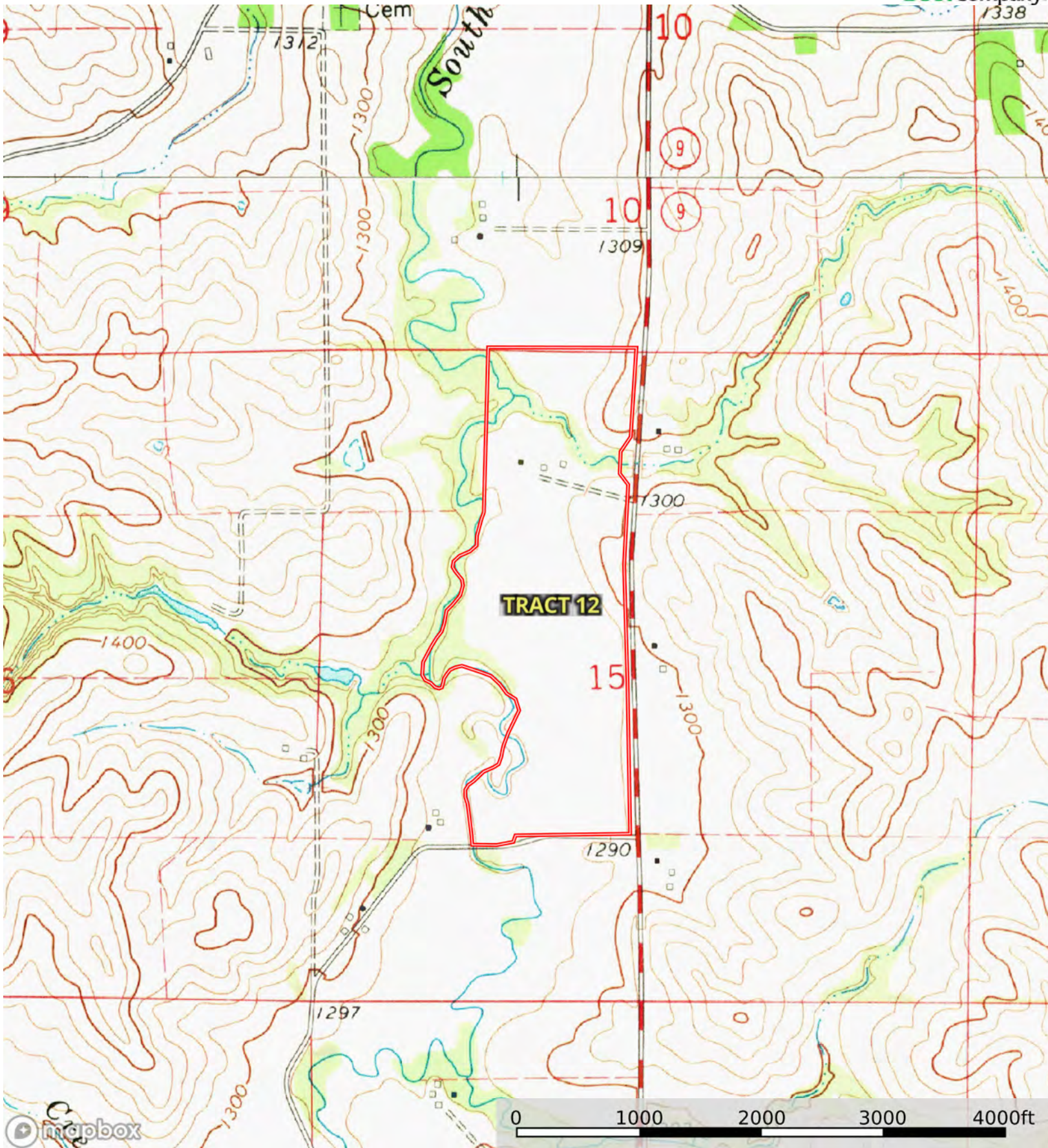
(\*) Total acres may differ in the second decimal compared to the sum of each acreage soil. This is due to a round error because we only show the acres of each soil with two decimal.





L-2400507

Dixon County, Nebraska, 1312.24 AC +/-



Boundary