

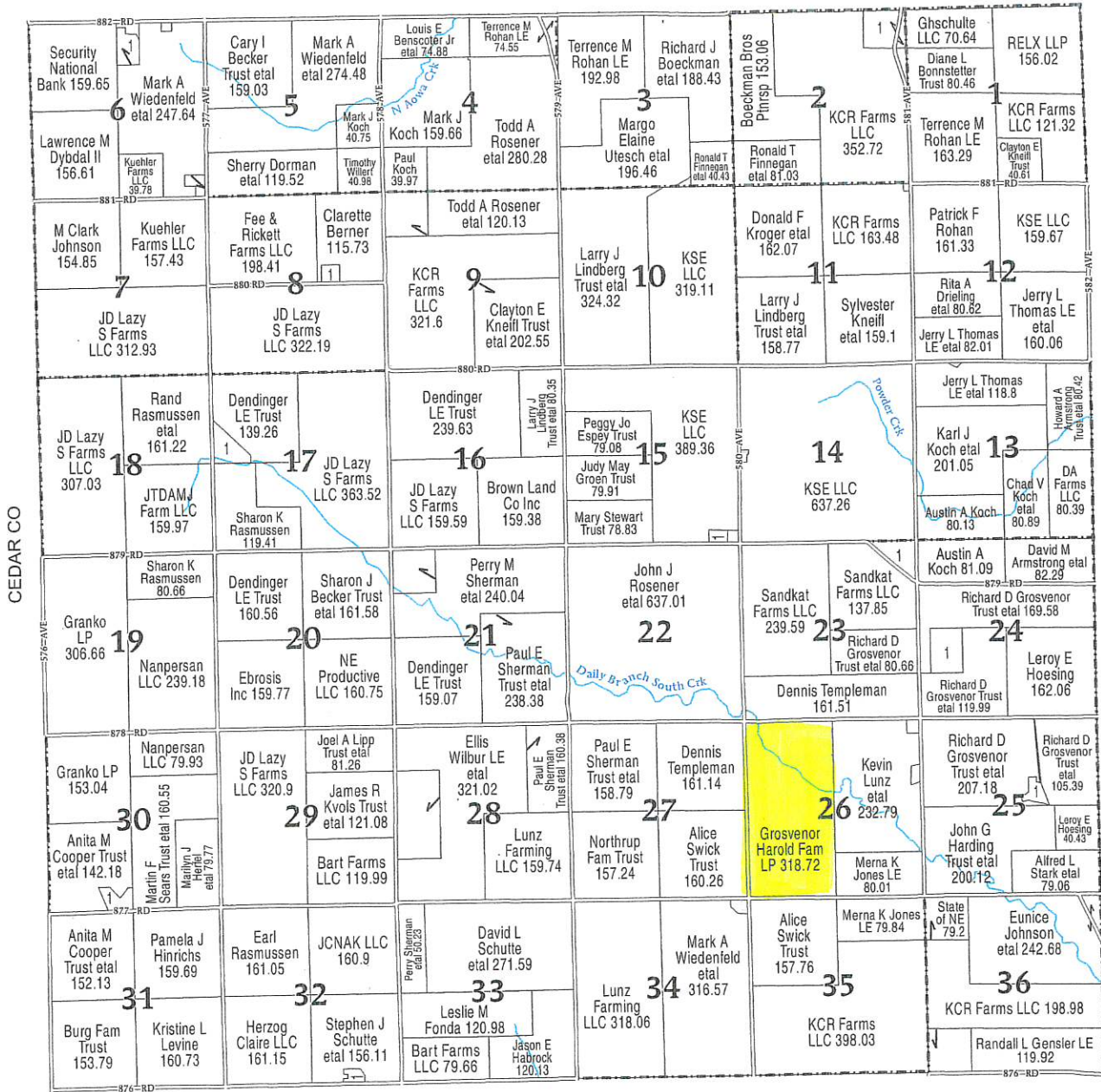
T-30-N

DAILY PLAT

(Landowners)

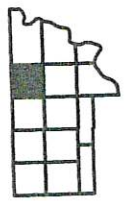
HOOKER TWP

R-4-E

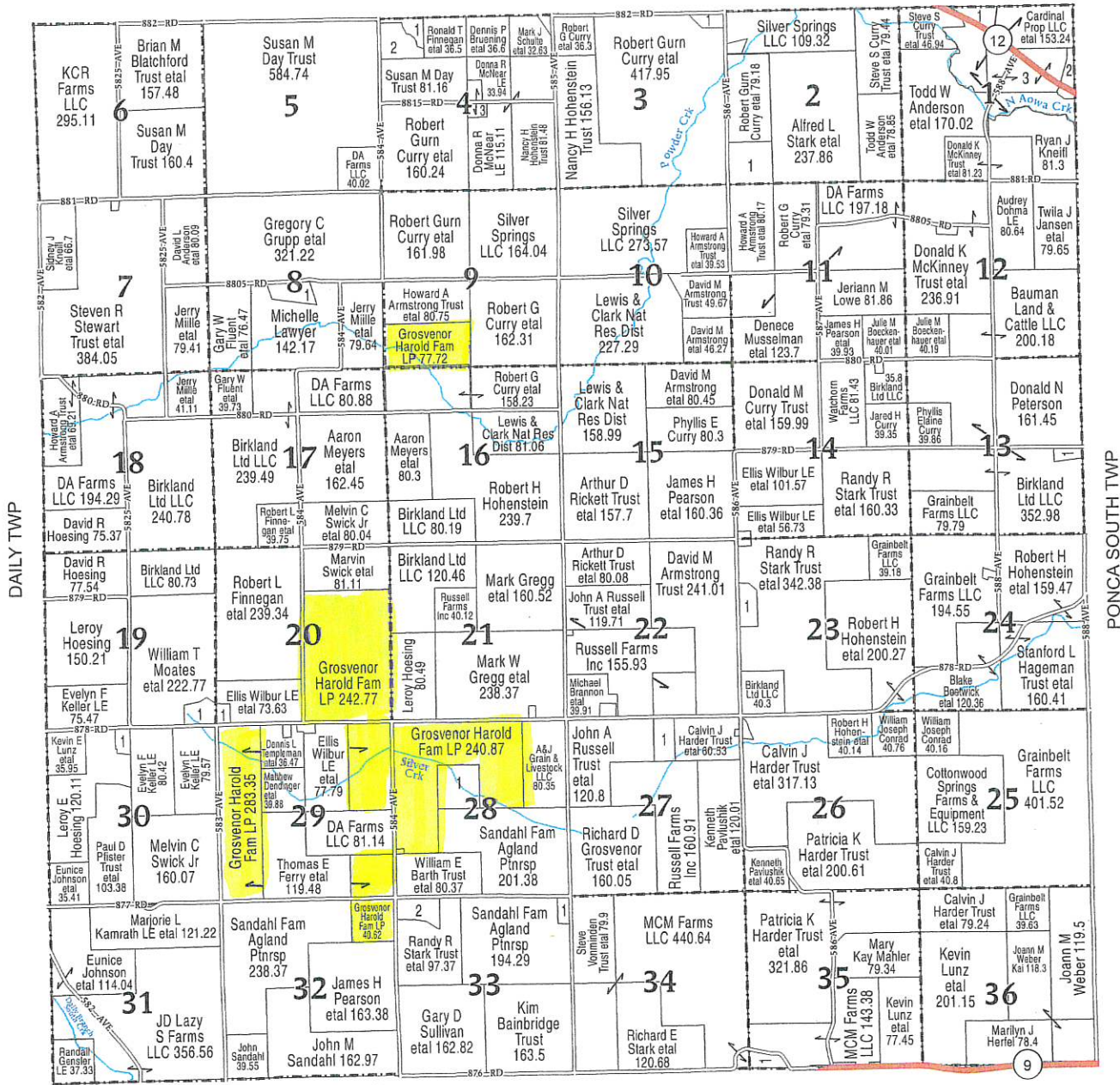


CLARK TWP

DAILY TOWNSHIP		SECTION 23	
SECTION 2		1 KSE LLC	22.35
1 GHSCHULTE LLC	32.93	SECTION 24	
SECTION 5		1 GROSVENOR TRUST, RICHARD D ETAL	29.24
1 WIEDENFELD, BRETT A ETAL	22.56	SECTION 25	
SECTION 8		1 GROSVENOR TRUST, RICHARD D ETAL	9.47
1 ST PETERS CHURCH	6.83	SECTION 30	
SECTION 15		1 STAPLES, MICHAEL ETAL	12.04
1 KNEIFL, CHAD PETER	5.11	SECTION 32	
SECTION 17		1 BATHKE, MARC A ETAL	5.69
1 MARTINSON, LONNY L	21		



(Landowners)
NEWCASTLE TWP



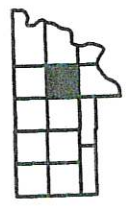
GALENA TWP

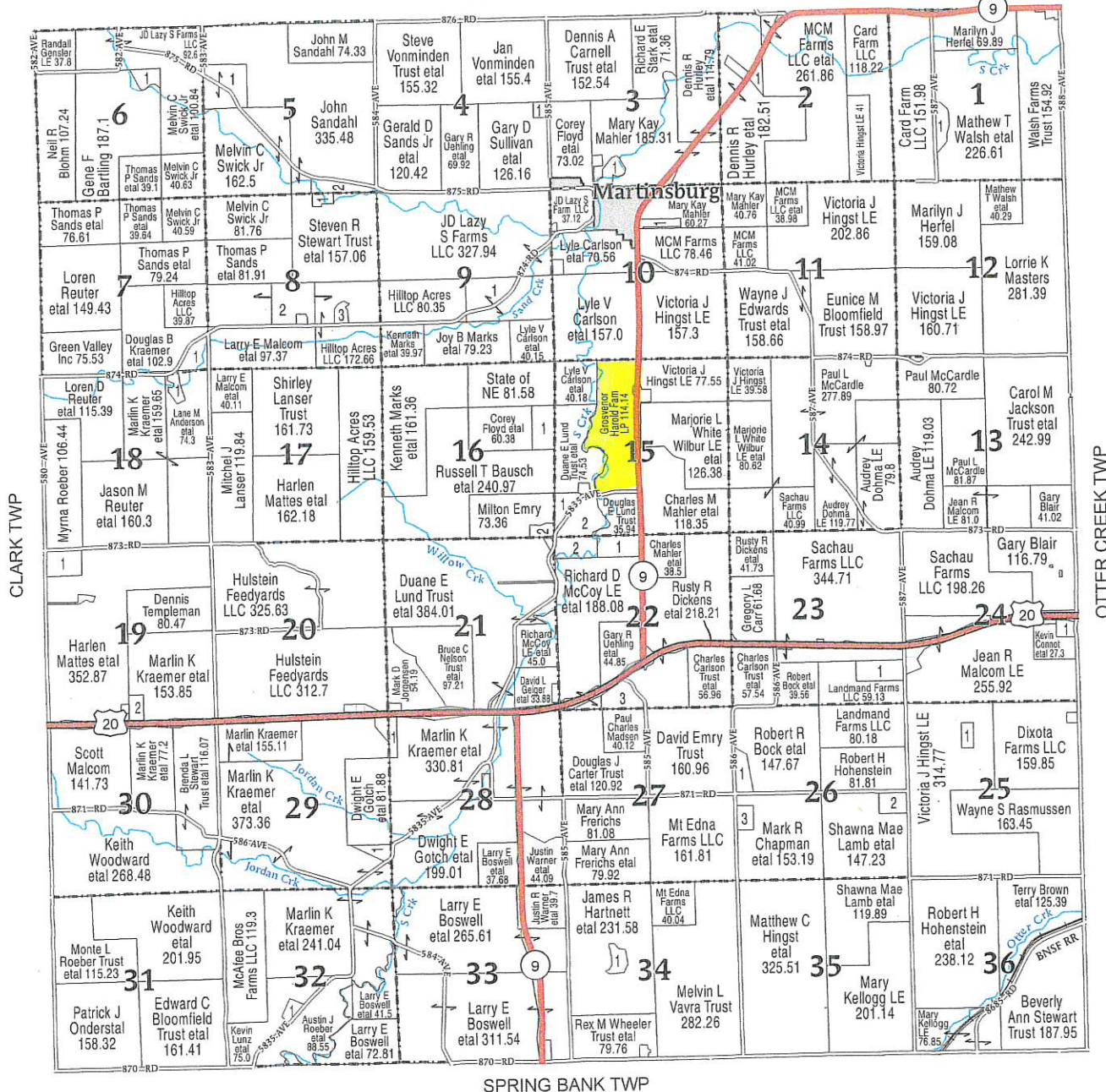
SILVER CREEK TOWNSHIP	
SECTION 1	
1 BOESHART, BRIAN G ETAL	13.34
2 NIEMAN, DANNY R ETAL	7.69
3 MCKINNEY TRUST, DONALD K ETAL	65.65
SECTION 2	
1 ARMSTRONG TRUST, FRANCES J ETAL	38.58
SECTION 3	
1 MCGHEE, DARYL ETAL	10.11

SECTION 4	
1 KROHN, BRYAN P ETAL	11.08
2 LEWON, MITCHEL R ETAL	26.17
3 MCNEAR, DANIEL W ETAL	13.33
SECTION 8	
1 ROHDE, GREG ETAL	17.51
SECTION 13	
1 BRITTON, MICHAEL S ETAL	8.16
SECTION 19	
1 NIEMANN, MATTHEW ETAL	15.64

SECTION 20	
1 NIEMANN, MATTHEW E ETAL	6.05
SECTION 23	
1 GREGG, HOLLY R ETAL	17.01
SECTION 27	
1 RICHTERMEIER, LEO D ETAL	19.34
SECTION 28	
1 PJ ARMSTRONG FARMLAND LLC	39.44
SECTION 30	
1 HOUGH, AARON L ETAL	7.98

SECTION 33	
1 KNEIFL, GREGORY A ETAL	7.62
2 BENSTEAD, BYRON	22.12
SECTION 35	
1 HURLEY, DENNIS R ETAL	12.62





SPRING BANK TWP

GALENA TOWNSHIP	
SECTION 1	
1 WALSH, MATHEW	12.23
SECTION 2	
1 HURLEY, DENNIS R ETAL	10.3
SECTION 3	
1 VILLAGE OF MARTINSBURG	10.24
SECTION 4	
1 SULLIVAN, JULIE M	5.07
SECTION 5	
1 SWICK JR, MELVIN C ETAL	40.79
2 KAY, JUSTIN L ETAL	15.27

SECTION 6	
1 SWICK JR, MELVIN C ETAL	10.23
SECTION 7	
1 ANDERSON, LANE M ETAL	16.34
SECTION 8	
1 KETELSEN, BO J ETAL	5.37
2 SANDS, THOMAS P ETAL	37.16
3 OSWALD, MAX E ETAL	6.01
SECTION 9	
1 PEARSON, JOLENE B	81.53
SECTION 10	
1 ROEBER, COLE M	7.15

SECTION 15	
1 LUND, ROSS M ETAL	13.06
2 LUND TRUST, DUANE E ETAL	30.19
SECTION 16	
1 LUND TRUST, DUANE E ETAL	20.85
2 LUND TRUST, DUANE E ETAL	6.79
SECTION 18	
1 BIEDERMAN, ADAM ETAL	7.44
SECTION 19	
1 ROEBER, AUSTIN J ETAL	20.57
2 KRAEMER, DOUGLAS B ETAL	8.1
SECTION 22	
1 LUND TRUST, DOUGLAS E	19.99

2 LUND TRUST, DUANE E ETAL	19.88
3 MADSEN, PAUL CHARLES	19.27
SECTION 23	
1 MARTINSON, BARRY L ETAL	21.39
SECTION 24	
1 CONNOT, KEVIN R ETAL	7.18
SECTION 25	
1 HINGST, MATTHEW C ETAL	6.39
SECTION 26	
1 BOCK, MICHAEL R ETAL	14.21
2 HOGAN, DENNIS ETAL	13.92
3 ROLAND, RICHARD D	9.22

SECTION 28	
1 HULSTEIN FEEDYARDS LLC	7.14
SECTION 29	
1 KEIL, DOUGLAS EARL ETAL	8.98
SECTION 32	
1 TRAMP, NORMAN N ETAL	6.28
SECTION 34	
1 GENSLER, ADAM	9.11

