

L-2400512

Emmons County, North Dakota, 320 AC +/-



Boundary



The information contained herein was obtained from sources deemed to be reliable. Land id™ Services makes no warranties or guarantees as to the completeness or accuracy thereof.



TRACT 1

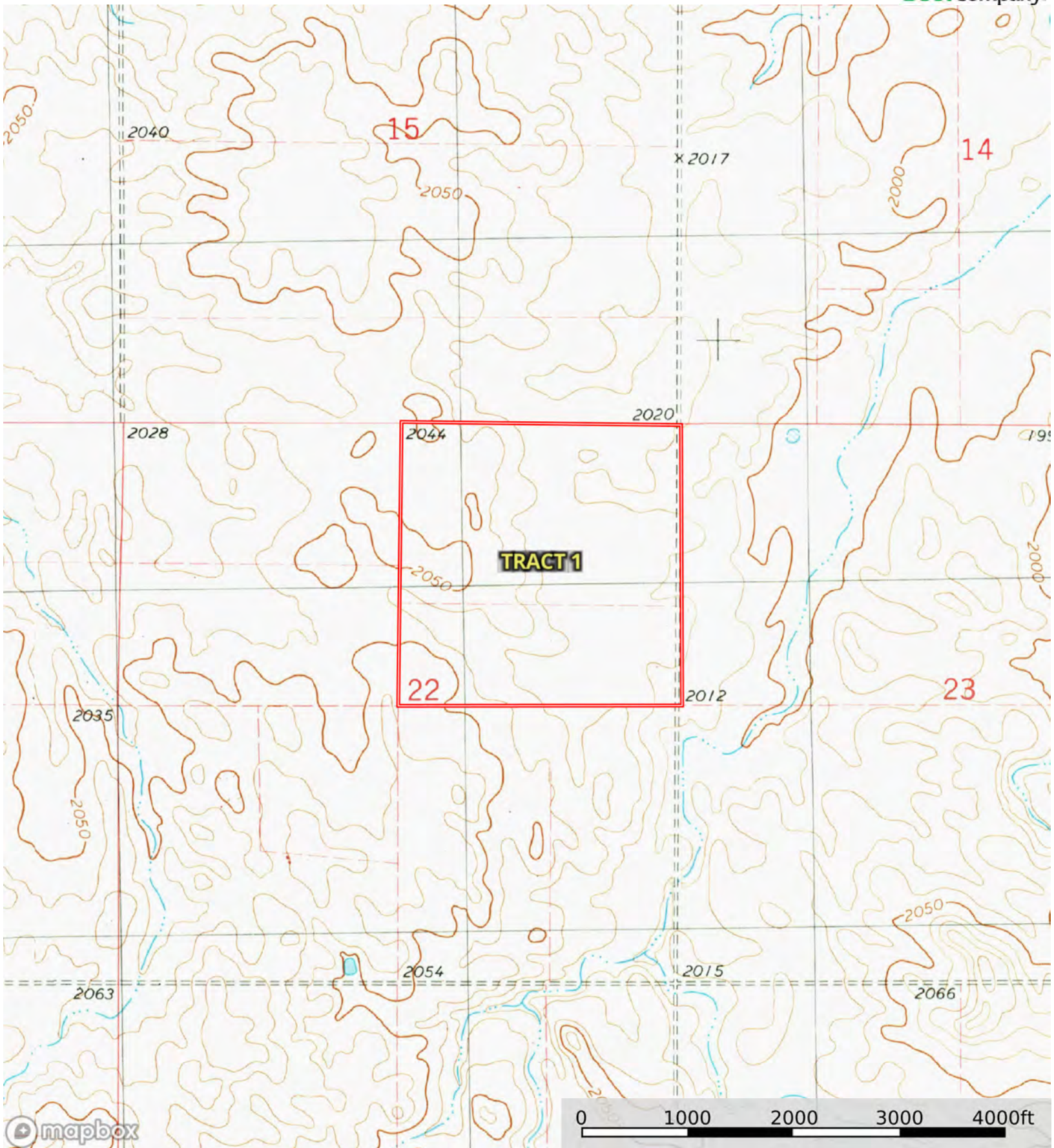


| Boundary 163.1 ac

SOIL CODE	SOIL DESCRIPTION	ACRES	%	CPI	NCCPI	CAP
C725B	Omio-Amor complex, 3 to 6 percent slopes	95.92	58.81	81	41	2e
C724A	Omio-Grassna silt loams, 0 to 3 percent slopes	52.13	31.96	88	47	2s
C901B	Amor-Arnegard loams, 3 to 6 percent slopes	11.36	6.97	79	41	2e
C956C	Vebar fine sandy loam, 6 to 9 percent slopes	3.69	2.26	47	31	4e
TOTALS		163.1(*)	100%	82.33	42.69	2.05

(*) Total acres may differ in the second decimal compared to the sum of each acreage soil. This is due to a round error because we only show the acres of each soil with two decimal.

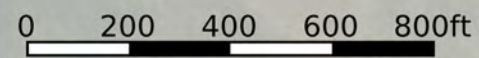
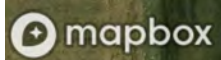




Boundary

L-2400512

Emmons County, North Dakota, 320 AC +/-



Boundary



The information contained herein was obtained from sources deemed to be reliable. Land ID™ Services makes no warranties or guarantees as to the completeness or accuracy thereof.



| Boundary 161.6 ac

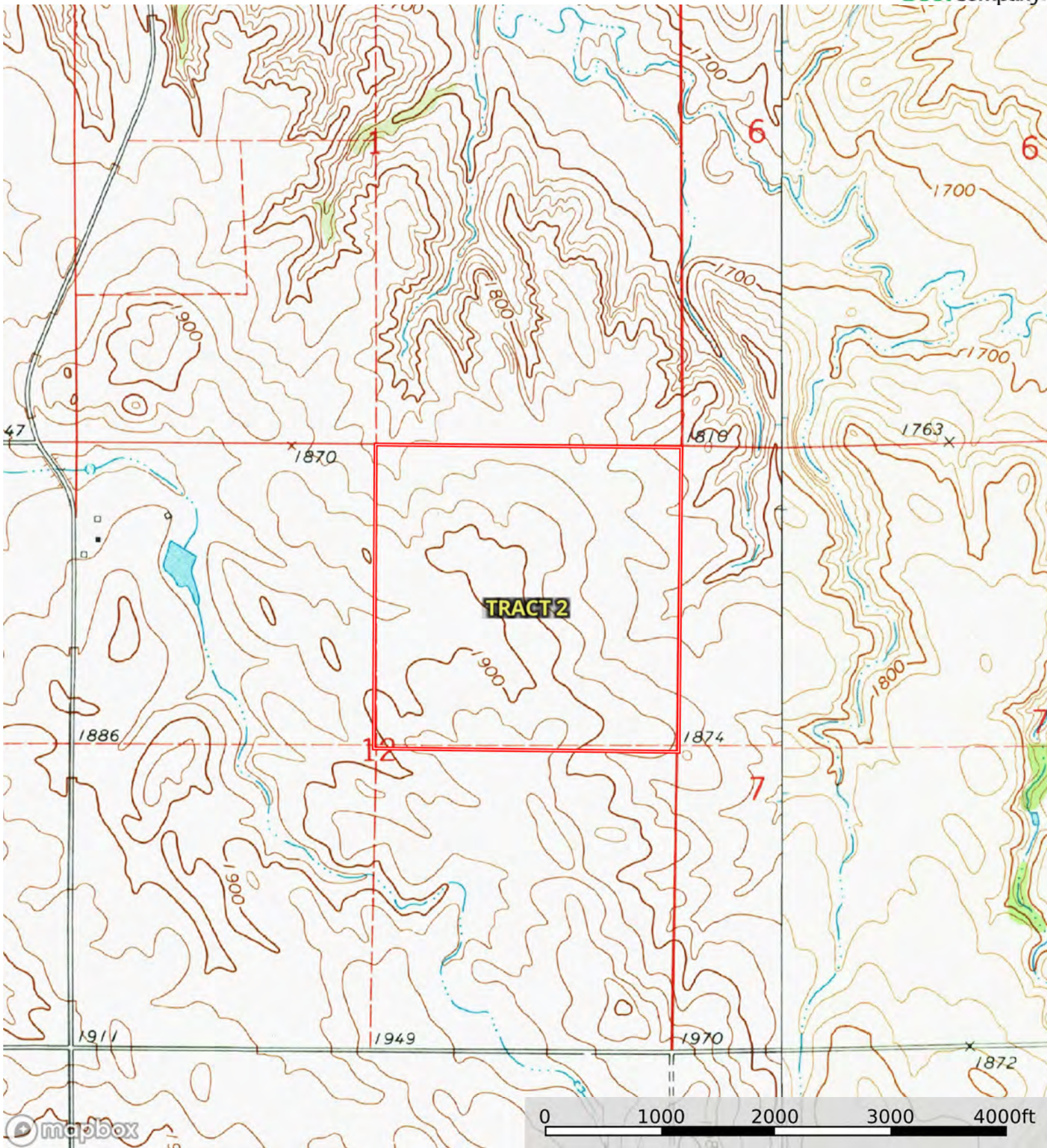
SOIL CODE	SOIL DESCRIPTION	ACRES	%	CPI	NCCPI	CAP
E0617B	Belfield-Wyola-Daglum complex, 2 to 6 percent slopes	51.15	31.65	65	30	2e
E3815B	Bryant silt loam, 2 to 6 percent slopes	47.13	29.16	85	41	2e
E3803C	Linton-Sutley silt loams, 6 to 9 percent slopes	22.4	13.86	60	43	3e
E0454C	Daglum-Rhoades complex, 6 to 9 percent slopes	20.28	12.55	28	21	6s
E3813A	Grassna silt loam, loess, 0 to 2 percent slopes	14.67	9.08	98	49	2c
E1333C	Vebar-Cohagen fine sandy loams, 6 to 9 percent slopes	5.97	3.69	41	25	4e
TOTALS		161.6(*)	100%	67.6	35.42	2.71

(*) Total acres may differ in the second decimal compared to the sum of each acreage soil. This is due to a round error because we only show the acres of each soil with two decimal.



L-2400512

Emmons County, North Dakota, 320 AC +/-



Boundary



The information contained herein was obtained from sources deemed to be reliable. Land id™ Services makes no warranties or guarantees as to the completeness or accuracy thereof.