

L-2400514



SCAN THE QR CODE
FOR MORE INFO!



LAND FOR SALE

72.44± Acres, Webster County, Iowa

OFFERED AT
\$1,086,600

Highlights:

- Highly productive cropland with a CSR2 of 86.9
- Located adjoining a grain elevator with rail access in Clare, Iowa.
- Level cropland with good drainage.

For additional information, please contact:

Thad Naeve, Agent | (515) 368-0773

TNaeve@FarmersNational.com

Property Information

Directions to Property: On the northwest edge of Clare, Iowa

Legal Description: Parcel 2022-025 located in the Southeast Quarter of Section 23, Township 90 North, Range 30 West of the 5th P.M., Webster County, Iowa containing 72.44 acres

Property Description: Highly productive cropland with an exceptional CSR2 of 86.9 with rail access located in a strong agricultural area on the northwest edge of Clare, Iowa.

Farm Data:

Hayland 71.48 acres
 Non-crop .96 acres
 Total 72.44 acres

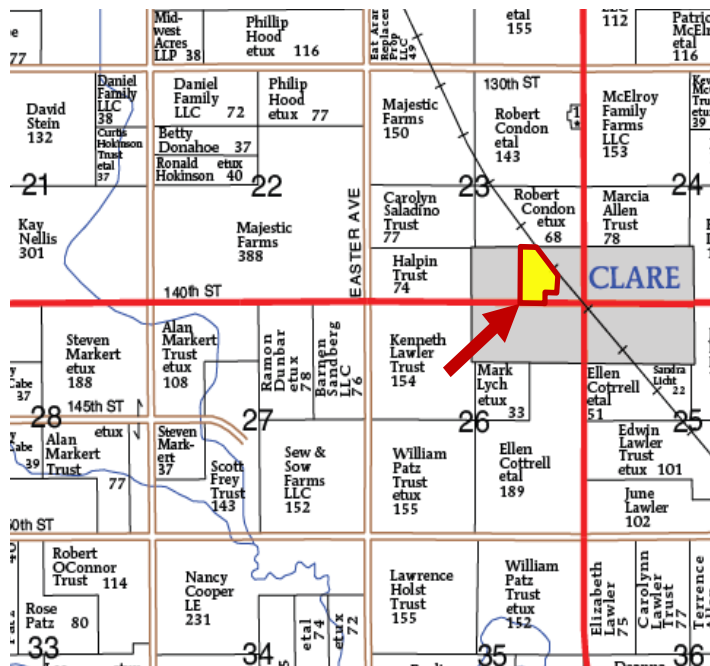
FSA Information:

	Base	Yield
Corn	37.2 acres	171 bushels
Soybeans	34.3 acres	49 bushes

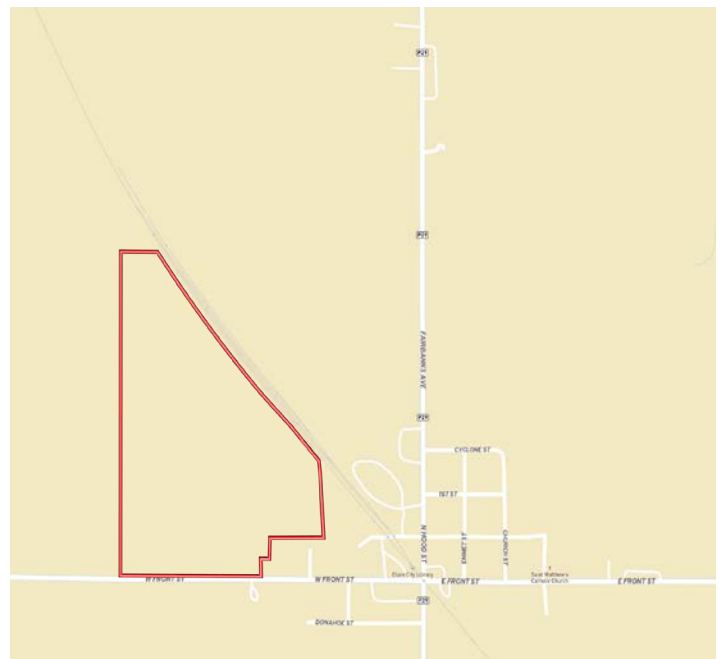
Taxes: \$2,276



Plat Map



Location Map



Information provided was obtained from sources deemed reliable, but the broker makes no guarantees as to its accuracy. All prospective buyers are urged to inspect the property, its title and to rely on their own conclusions. Seller reserves the right to refuse any or all offers submitted and may withdraw the property from offering without notice. Farmers National Company and its representatives on the reverse side are the Designated Agents for the seller.

Aerial Map



Soil Map



SOIL CODE	SOIL DESCRIPTION	ACRES	%	CSR2	CPI	NCCPI	CAP
107	Webster clay loam, 0 to 2 percent slopes	39.69	54.96	86.0	0	83	2w
138B	Clarion loam, 2 to 6 percent slopes	17.7	24.51	89.0	0	83	2e
55	Nicollet clay loam, 1 to 3 percent slopes	10.96	15.18	89.0	0	81	1
138C2	Clarion loam, 6 to 10 percent slopes, moderately eroded	3.51	4.86	83.0	0	69	3e
6	Okoboji silty clay loam, 0 to 1 percent slopes	0.37	0.51	59.0	0	76	3w
TOTALS		72.23(* *)	100%	86.92	-	81.99	1.9



LAND FOR SALE

72.44 ± Acres, Webster County, Iowa



www.FarmersNational.com

Real Estate Sales • Farm and Ranch Management • Energy Management
Appraisals • Insurance • Consultations • Forestry Management • Hunting Lease Network • FNC Ag Stock