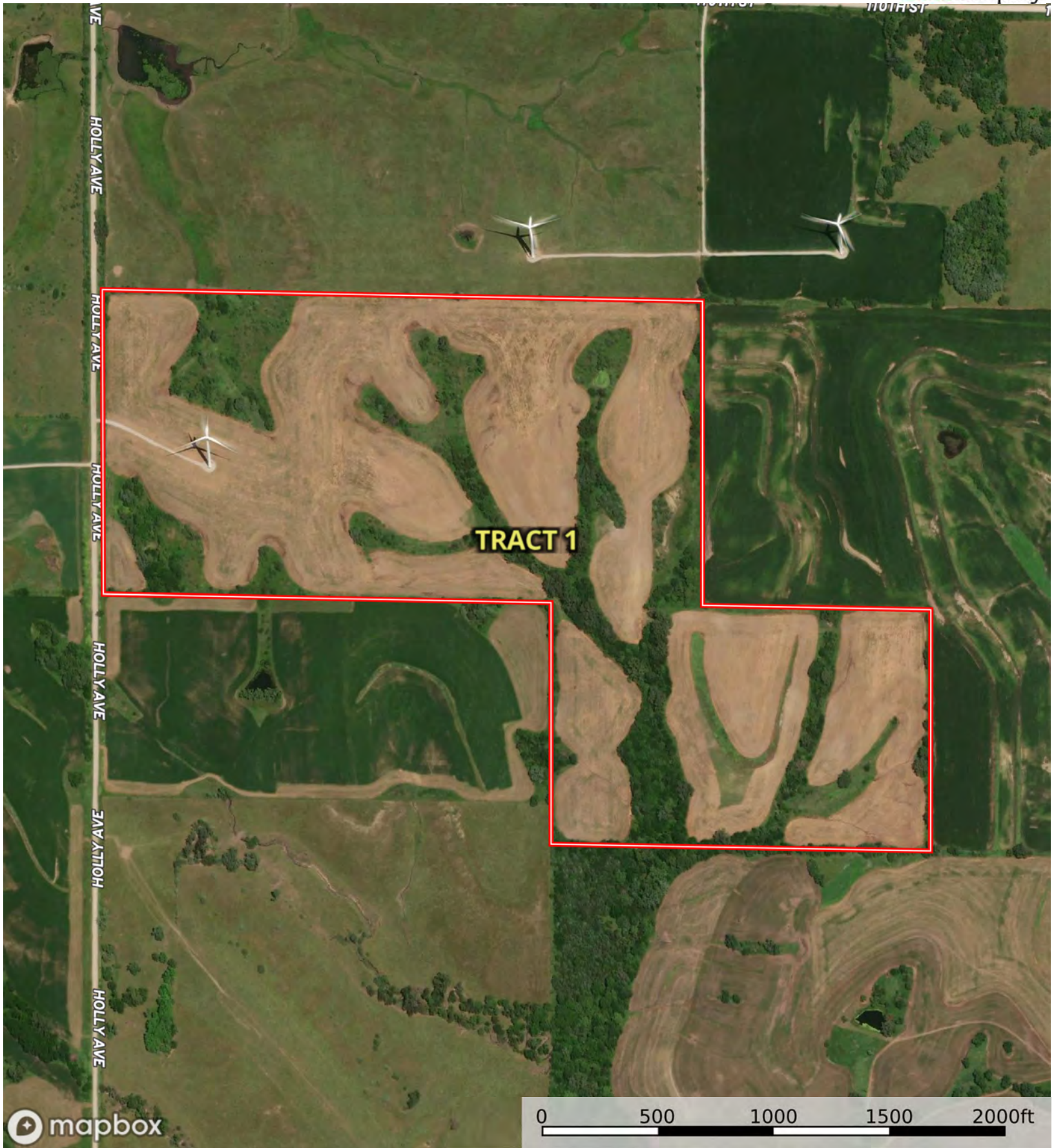
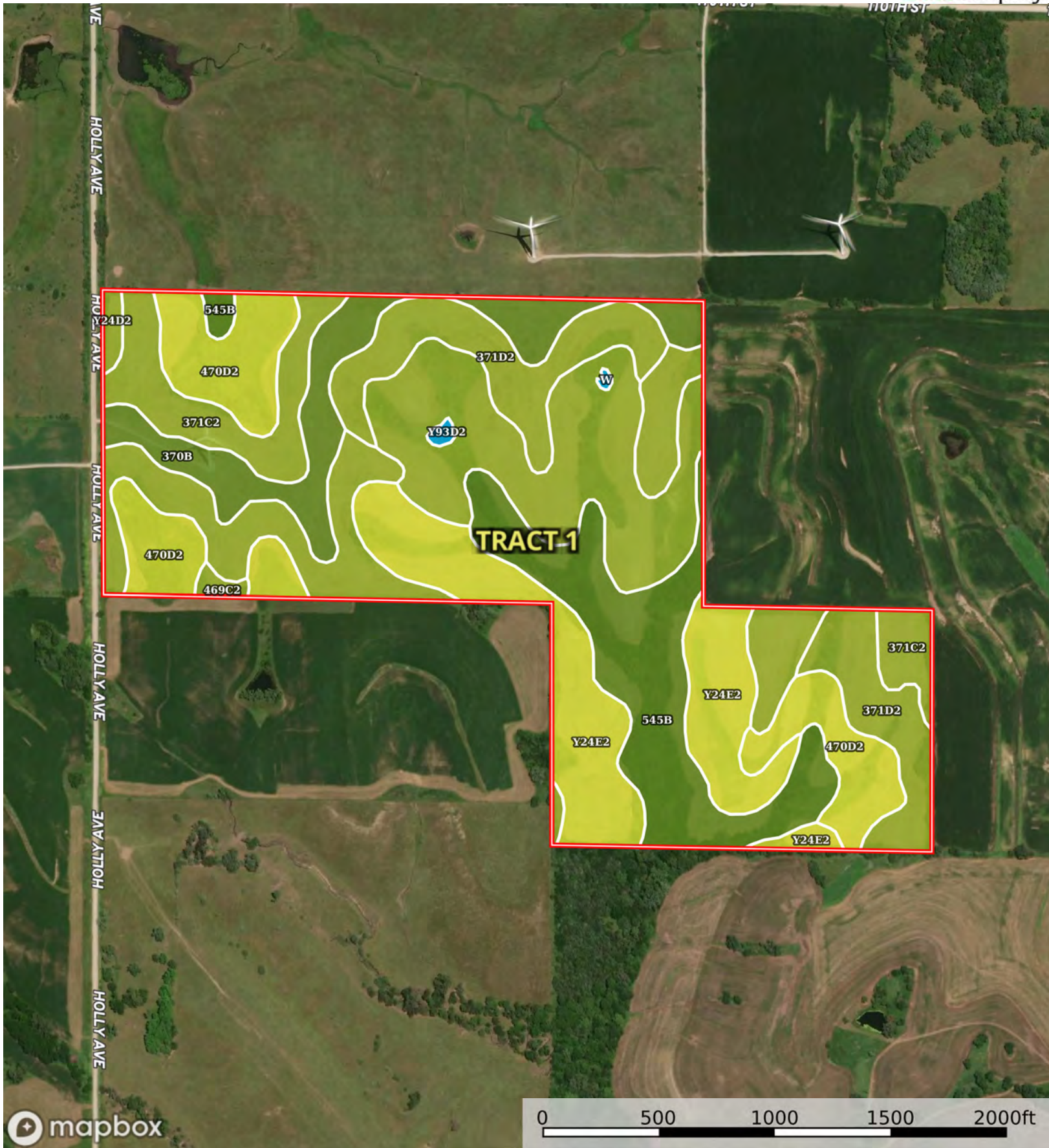


Boundary





Boundary



Boundary



| Boundary 117.98 ac

SOIL CODE	SOIL DESCRIPTION	ACRES	%	CSR2	CPI	NCCPI	CAP
371C2	Sharpsburg-Nira silty clay loams, 5 to 9 percent slopes, eroded	22.8	19.33	83.0	0	80	3e
Y93D2	Shelby-Adair clay loams, dissected till plain, 9 to 14 percent slopes, eroded	18.73	15.88	35.0	0	67	3e
Y24E2	Shelby clay loam, dissected till plain, 14 to 18 percent slopes, eroded	17.96	15.22	35.0	0	71	4e
545B	Zook-Ely-Gullied land complex, 2 to 5 percent slopes	17.0	14.41	64.0	0	7	2w
470D2	Lamoni-Shelby complex, 9 to 14 percent slopes, eroded	15.24	12.92	28.0	0	62	4e
371D2	Sharpsburg-Nira silty clay loams, 9 to 14 percent slopes, eroded	14.5	12.29	57.0	0	76	3e
370B	Sharpsburg silty clay loam, 2 to 5 percent slopes	10.32	8.75	91.0	0	91	2e
Y24D2	Shelby clay loam, dissected till plain, 9 to 14 percent slopes, eroded	0.65	0.55	49.0	0	75	3e
469C2	Lamoni-Clarinda-Shelby complex, 5 to 9 percent slopes, eroded	0.48	0.41	44.0	0	61	3e
W	Water	0.3	0.25	-	0	-	-
TOTALS		117.98(*)	100%	55.18	-	63.88	3.05









(*) Total acres may differ in the second decimal compared to the sum of each acreage soil. This is due to a round error because we only show the acres of each soil with two decimal.

Capability Legend

Increased Limitations and Hazards

Decreased Adaptability and Freedom of Choice Users

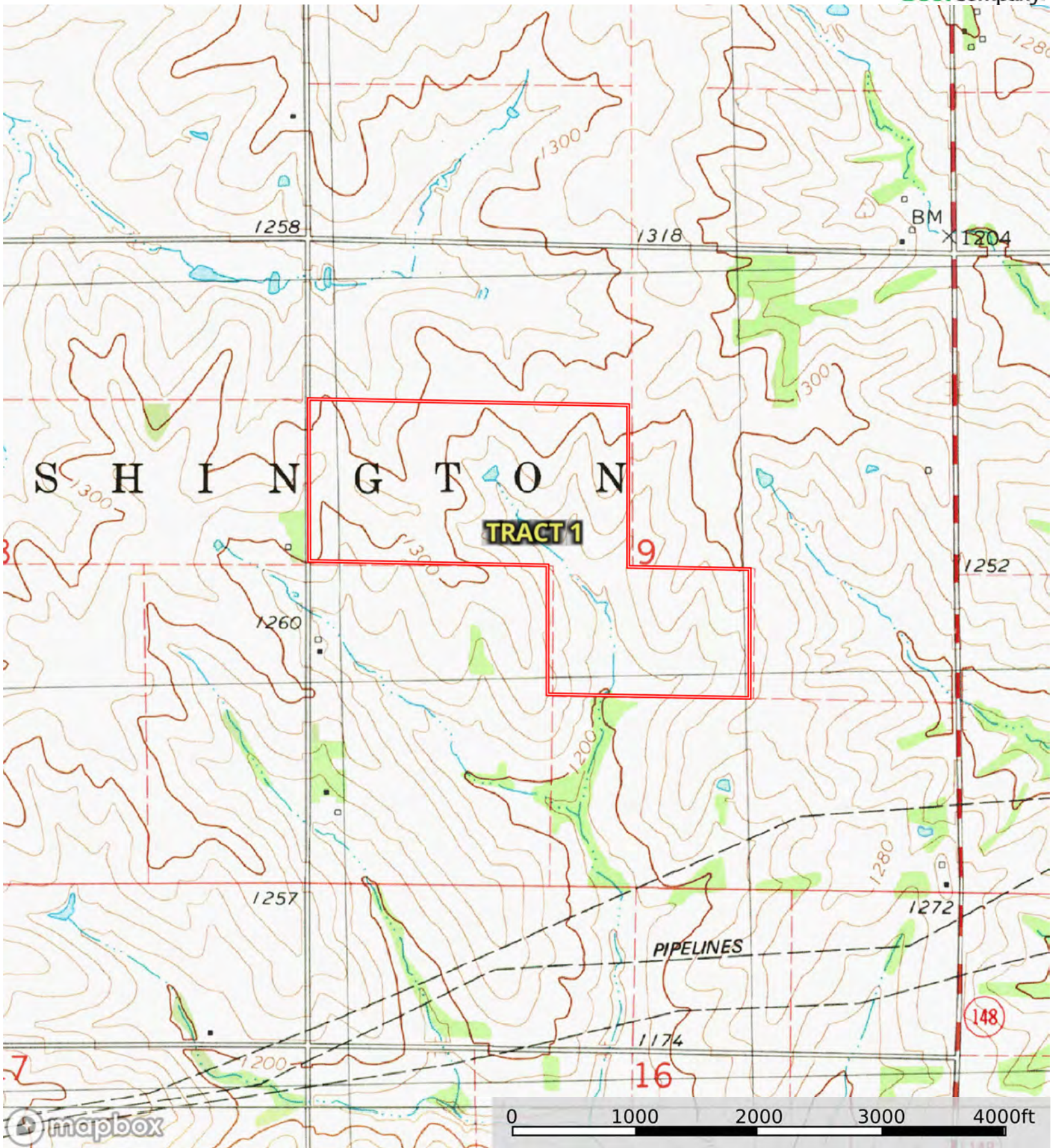
Land, Capability

								
	1	2	3	4	5	6	7	8
'Wild Life'	•	•	•	•	•	•	•	•
Forestry	•	•	•	•	•	•	•	
Limited	•	•	•	•	•	•	•	
Moderate	•	•	•	•	•	•		
Intense	•	•	•	•	•			
Limited	•	•	•	•				
Moderate	•	•	•					
Intense	•	•						
Very Intense	•							

Grazing Cultivation

(c) climatic limitations (e) susceptibility to erosion

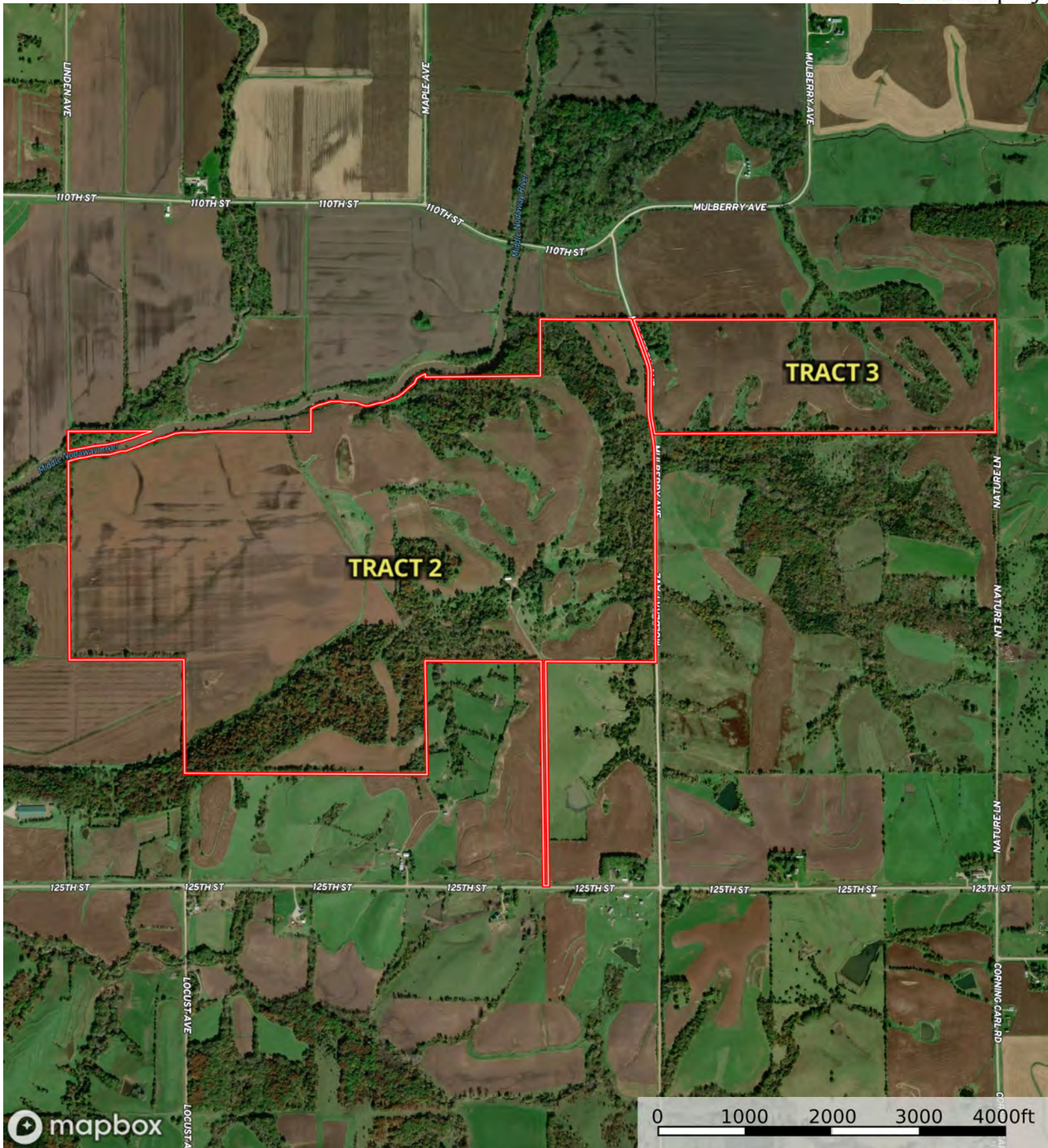
(s) soil limitations within the rooting zone (w) excess of water



Boundary

L-2400520

Adams County, Iowa, 800.31 AC +/-



Boundary



The information contained herein was obtained from sources deemed to be reliable. Land id™ Services makes no warranties or guarantees as to the completeness or accuracy thereof.

|  All Polygons 560.39 ac

SOIL CODE	SOIL DESCRIPTION	ACRES	%	CSR2	CPI	NCCPI	CAP
54	Zook silty clay loam, 0 to 2 percent slopes, occasionally flooded	128.93	23.01	67.0	0	64	2w
179F	Gara loam, 18 to 25 percent slopes	65.58	11.7	18.0	0	62	6e
248	Wabash silty clay loam, occasionally ponded, 0 to 2 percent slopes, occasionally flooded	61.97	11.06	37.0	0	47	8w
179E	Gara loam, dissected till plain, 14 to 18 percent slopes	57.12	10.19	37.0	0	79	6e
76C	Ladoga silt loam, dissected till plain, 5 to 9 percent slopes	56.72	10.12	80.0	0	80	3e
76D2	Ladoga silt loam, 9 to 14 percent slopes, eroded	38.23	6.82	49.0	0	74	3e
545B	Zook-Ely-Gullied land complex, 2 to 5 percent slopes	27.69	4.94	64.0	0	7	2w
421D2	Gara-Bucknell complex, 9 to 14 percent slopes, moderately eroded	25.45	4.54	28.0	0	66	4e
15B	Olmitz-Ely-Zook complex, 2 to 5 percent slopes	25.23	4.5	82.0	0	85	2e
273B	Olmitz loam, 2 to 5 percent slopes	24.86	4.44	89.0	0	97	2e
54+	Zook silt loam, 0 to 2 percent slopes, occasionally flooded, overwash	13.56	2.42	69.0	0	63	2w
876D2	Ladoga silt loam, terrace on dissected till plain, 9 to 14 percent slopes, eroded	12.1	2.16	51.0	0	72	3e
876C2	Ladoga silt loam, terrace on dissected till plain, 5 to 9 percent slopes, eroded	9.1	1.62	78.0	0	77	3e
337C2	Dickman, loamy substratum-Sharpsburg complex, 5 to 9 percent slopes, eroded	7.32	1.31	54.0	0	68	3e
273C	Olmitz loam, 5 to 9 percent slopes	5.71	1.02	85.0	0	96	3e
W	Water	0.32	0.06	-	0	-	-
76B	Ladoga silt loam, 2 to 5 percent slopes	0.3	0.05	86.0	0	83	2e
76D	Ladoga silt loam, 9 to 14 percent slopes	0.2	0.04	52.0	0	75	3e
TOTALS		560.39(*)	100%	54.57	-	66.12	3.86

(*) Total acres may differ in the second decimal compared to the sum of each acreage soil. This is due to a round error because we only show the acres of each soil with two decimal.

| Boundary 557.48 ac

SOIL CODE	SOIL DESCRIPTION	ACRES	%	CSR2	CPI	NCCPI	CAP
54	Zook silty clay loam, 0 to 2 percent slopes, occasionally flooded	126.02	22.61	67.0	0	64	2w
179F	Gara loam, 18 to 25 percent slopes	65.58	11.76	18.0	0	62	6e
248	Wabash silty clay loam, occasionally ponded, 0 to 2 percent slopes, occasionally flooded	61.97	11.12	37.0	0	47	8w
179E	Gara loam, dissected till plain, 14 to 18 percent slopes	57.12	10.25	37.0	0	79	6e
76C	Ladoga silt loam, dissected till plain, 5 to 9 percent slopes	56.72	10.17	80.0	0	80	3e

76D2	Ladoga silt loam, 9 to 14 percent slopes, eroded	38.23	6.86	49.0	0	74	3e
545B	Zook-Ely-Gullied land complex, 2 to 5 percent slopes	27.69	4.97	64.0	0	7	2w
421D2	Gara-Bucknell complex, 9 to 14 percent slopes, moderately eroded	25.45	4.57	28.0	0	66	4e
15B	Olmitz-Ely-Zook complex, 2 to 5 percent slopes	25.23	4.53	82.0	0	85	2e
273B	Olmitz loam, 2 to 5 percent slopes	24.86	4.46	89.0	0	97	2e
54+	Zook silt loam, 0 to 2 percent slopes, occasionally flooded, overwash	13.56	2.43	69.0	0	63	2w
876D2	Ladoga silt loam, terrace on dissected till plain, 9 to 14 percent slopes, eroded	12.1	2.17	51.0	0	72	3e
876C2	Ladoga silt loam, terrace on dissected till plain, 5 to 9 percent slopes, eroded	9.1	1.63	78.0	0	77	3e
337C2	Dickman, loamy substratum-Sharpsburg complex, 5 to 9 percent slopes, eroded	7.32	1.31	54.0	0	68	3e
273C	Olmitz loam, 5 to 9 percent slopes	5.71	1.02	85.0	0	96	3e
W	Water	0.32	0.06	-	0	-	-
76B	Ladoga silt loam, 2 to 5 percent slopes	0.3	0.05	86.0	0	83	2e
76D	Ladoga silt loam, 9 to 14 percent slopes	0.2	0.04	52.0	0	75	3e
TOTALS		557.48(*)	100%	54.51	-	66.13	3.87

(*) Total acres may differ in the second decimal compared to the sum of each acreage soil. This is due to a round error because we only show the acres of each soil with two decimal.

| Boundary 2.91 ac

SOIL CODE	SOIL DESCRIPTION	ACRES	%	CSR2	CPI	NCCPI	CAP
54	Zook silty clay loam, 0 to 2 percent slopes, occasionally flooded	2.91	100	67.0	0	64	2w
TOTALS		2.91(*)	100%	67	-	64.0	2









(*) Total acres may differ in the second decimal compared to the sum of each acreage soil. This is due to a round error because we only show the acres of each soil with two decimal.

Capability Legend

Increased Limitations and Hazards

Decreased Adaptability and Freedom of Choice Users

Land, Capability

								
	1	2	3	4	5	6	7	8
'Wild Life'	•	•	•	•	•	•	•	•
Forestry	•	•	•	•	•	•	•	
Limited	•	•	•	•	•	•	•	
Moderate	•	•	•	•	•	•		
Intense	•	•	•	•	•			
Limited	•	•	•	•				
Moderate	•	•	•					
Intense	•	•						
Very Intense	•							

Grazing Cultivation

(c) climatic limitations (e) susceptibility to erosion

(s) soil limitations within the rooting zone (w) excess of water



Boundary



| Boundary 120.32 ac

SOIL CODE	SOIL DESCRIPTION	ACRES	%	CSR2	CPI	NCCPI	CAP
76C	Ladoga silt loam, dissected till plain, 5 to 9 percent slopes	44.02	36.59	80.0	0	80	3e
421D2	Gara-Bucknell complex, 9 to 14 percent slopes, moderately eroded	19.79	16.45	28.0	0	66	4e
421E2	Gara-Bucknell complex, 14 to 18 percent slopes, moderately eroded	17.06	14.18	23.0	0	63	6e
76D2	Ladoga silt loam, 9 to 14 percent slopes, eroded	11.92	9.91	49.0	0	74	3e
545B	Zook-Ely-Gullied land complex, 2 to 5 percent slopes	11.23	9.33	64.0	0	7	2w
179E	Gara loam, dissected till plain, 14 to 18 percent slopes	7.69	6.39	37.0	0	79	6e
76D	Ladoga silt loam, 9 to 14 percent slopes	5.26	4.37	52.0	0	75	3e
371C2	Sharpsburg-Nira silty clay loams, 5 to 9 percent slopes, eroded	1.55	1.29	83.0	0	80	3e
371D2	Sharpsburg-Nira silty clay loams, 9 to 14 percent slopes, eroded	0.79	0.66	57.0	0	76	3e
15B	Olmitz-Ely-Zook complex, 2 to 5 percent slopes	0.41	0.34	82.0	0	85	2e
179F	Gara loam, 18 to 25 percent slopes	0.26	0.22	18.0	0	62	6e
W	Water	0.16	0.13	-	0	-	-
Y93D2	Shelby-Adair clay loams, dissected till plain, 9 to 14 percent slopes, eroded	0.15	0.12	35.0	0	67	3e
8B	Judson silty clay loam, dissected till plain, 2 to 5 percent slopes	0.03	0.02	93.0	0	94	2e
TOTALS		120.32(*)	100%	54.43	-	67.43	3.69









(*) Total acres may differ in the second decimal compared to the sum of each acreage soil. This is due to a round error because we only show the acres of each soil with two decimal.

Capability Legend

Increased Limitations and Hazards

Decreased Adaptability and Freedom of Choice Users

Land, Capability

								
	1	2	3	4	5	6	7	8
'Wild Life'	•	•	•	•	•	•	•	•
Forestry	•	•	•	•	•	•	•	
Limited	•	•	•	•	•	•	•	
Moderate	•	•	•	•	•	•		
Intense	•	•	•	•	•			
Limited	•	•	•	•				
Moderate	•	•	•					
Intense	•	•						
Very Intense	•							

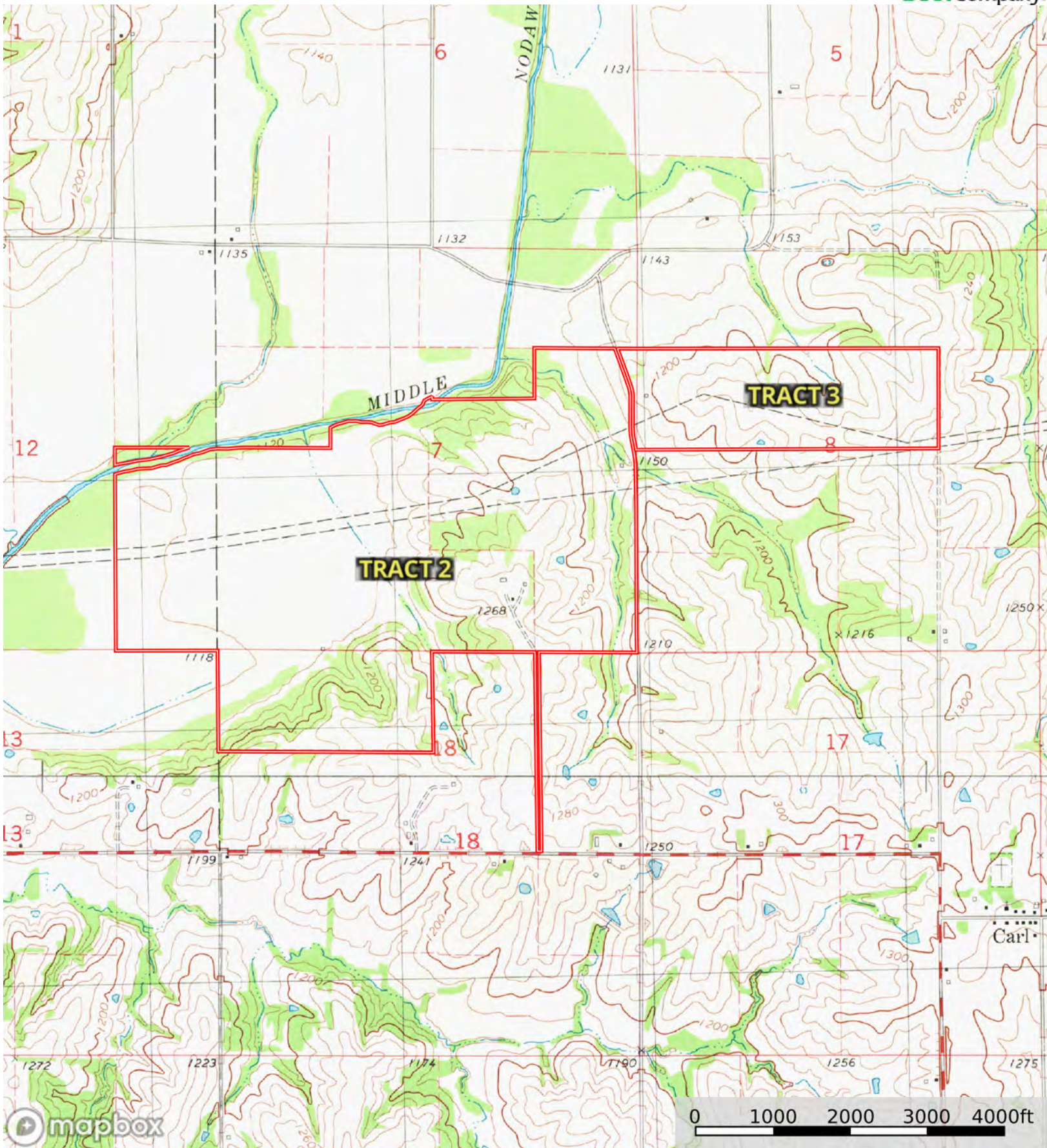
Grazing Cultivation

(c) climatic limitations (e) susceptibility to erosion

(s) soil limitations within the rooting zone (w) excess of water

L-2400520

Adams County, Iowa, 800.31 AC +/-



Boundary



The information contained herein was obtained from sources deemed to be reliable. Land id™ Services makes no warranties or guarantees as to the completeness or accuracy thereof.