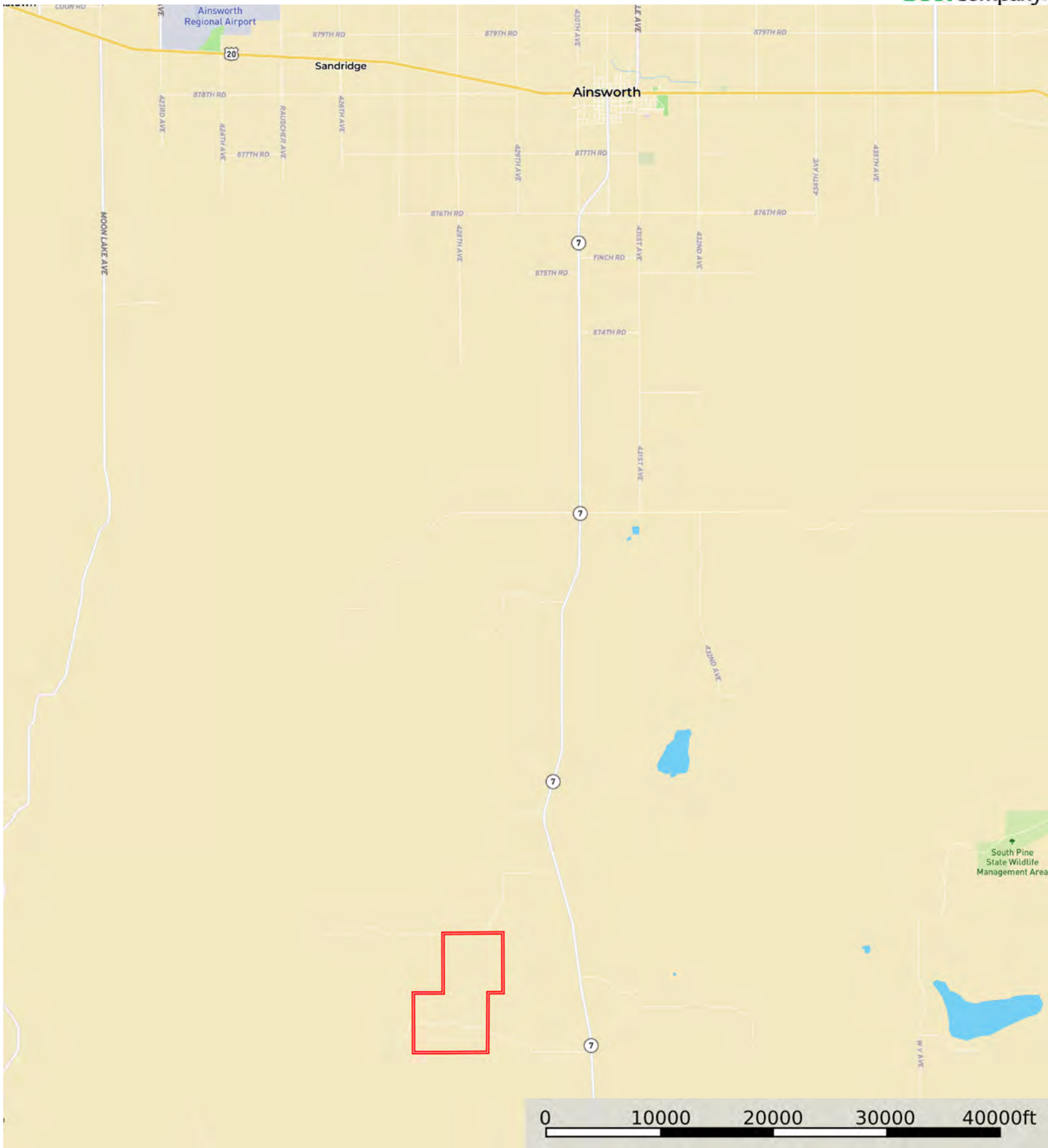


L-2400525

Brown County, Nebraska, 1455.85 AC +/-



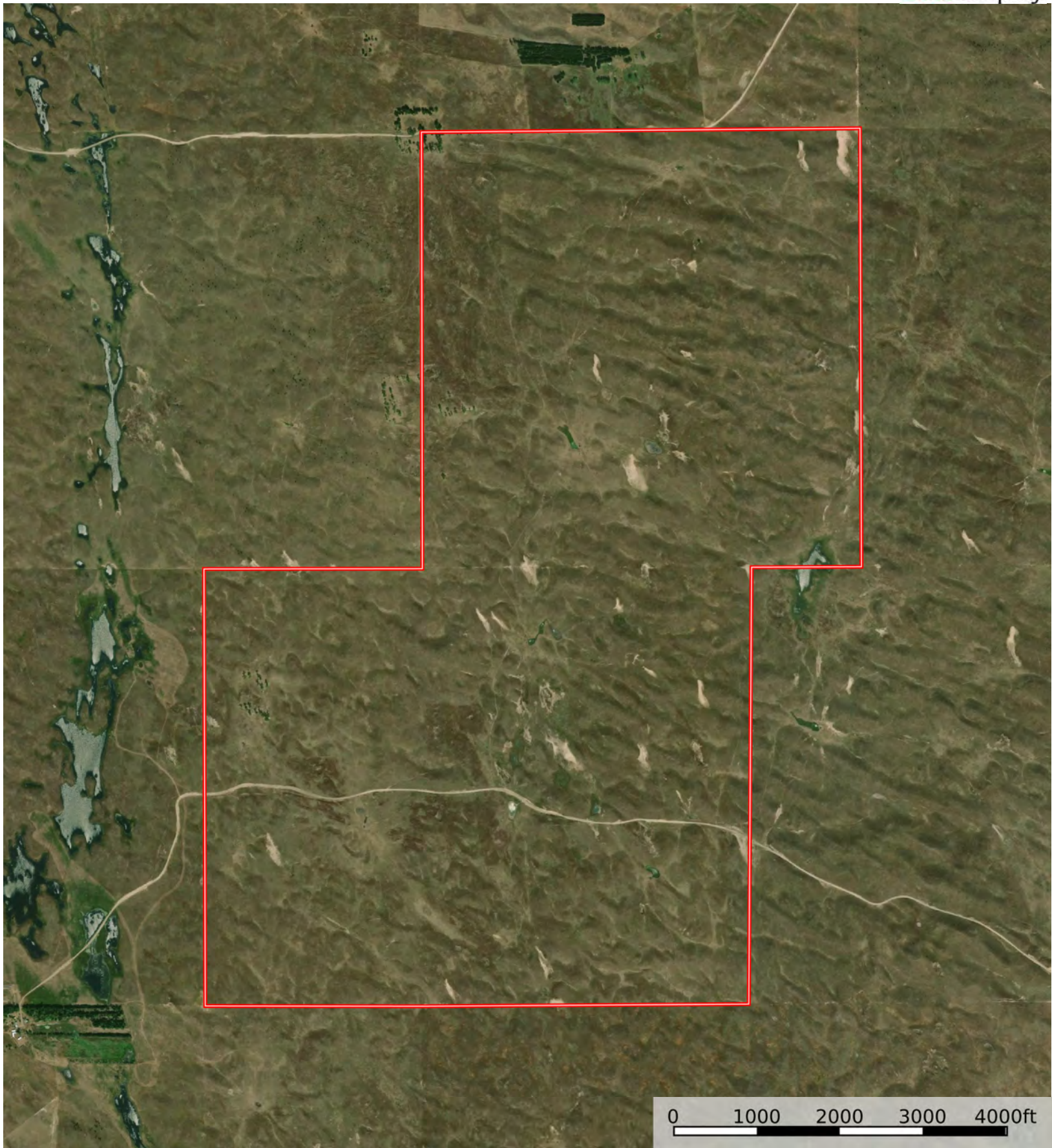
Boundary



The information contained herein was obtained from sources deemed to be reliable. Land id™ Services makes no warranties or guarantees as to the completeness or accuracy thereof.

L-2400525

Brown County, Nebraska, 1455.85 AC +/-



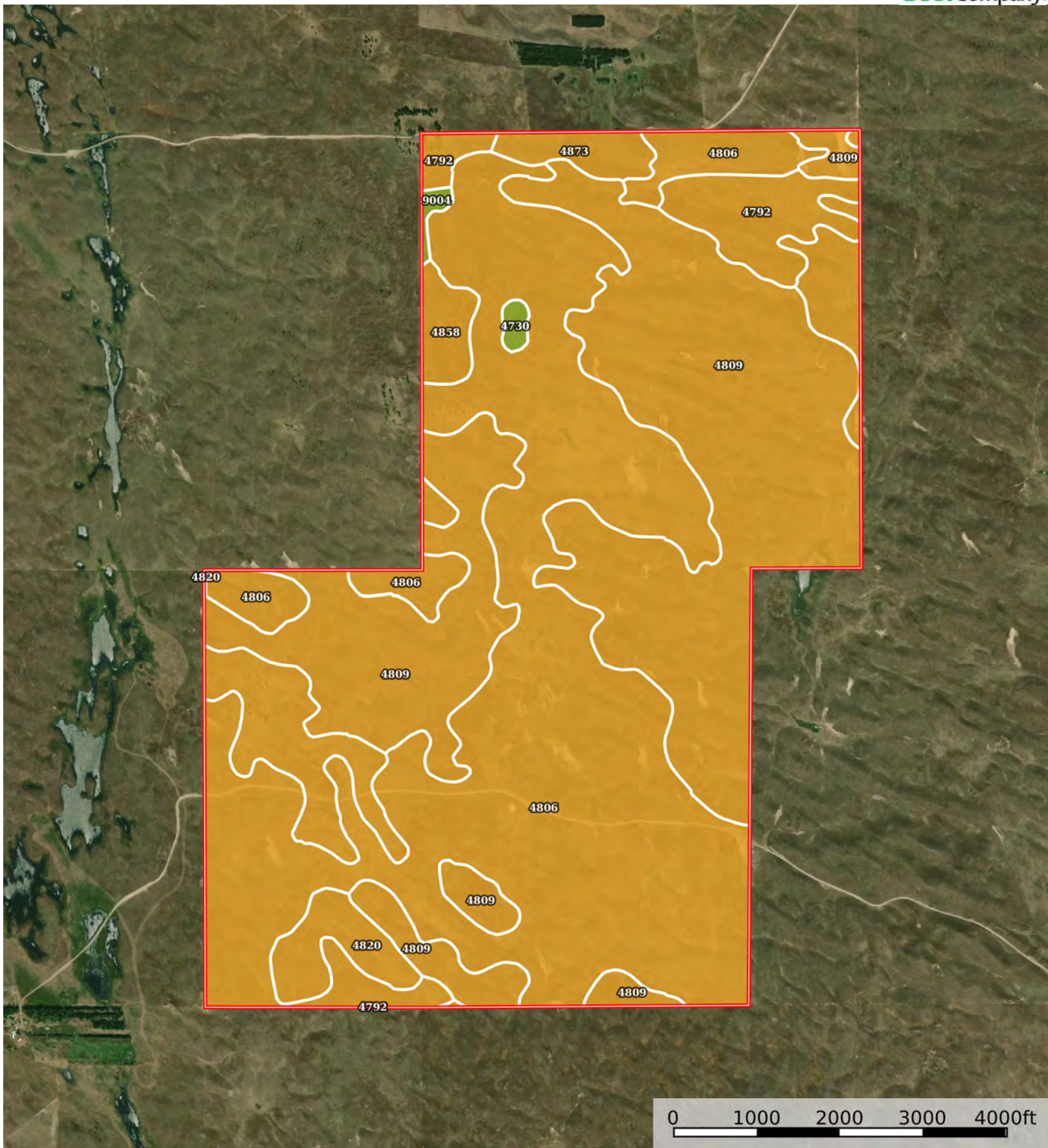
Boundary



The information contained herein was obtained from sources deemed to be reliable. Land ID™ Services makes no warranties or guarantees as to the completeness or accuracy thereof.

L-2400525

Brown County, Nebraska, 1455.85 AC +/-



Boundary



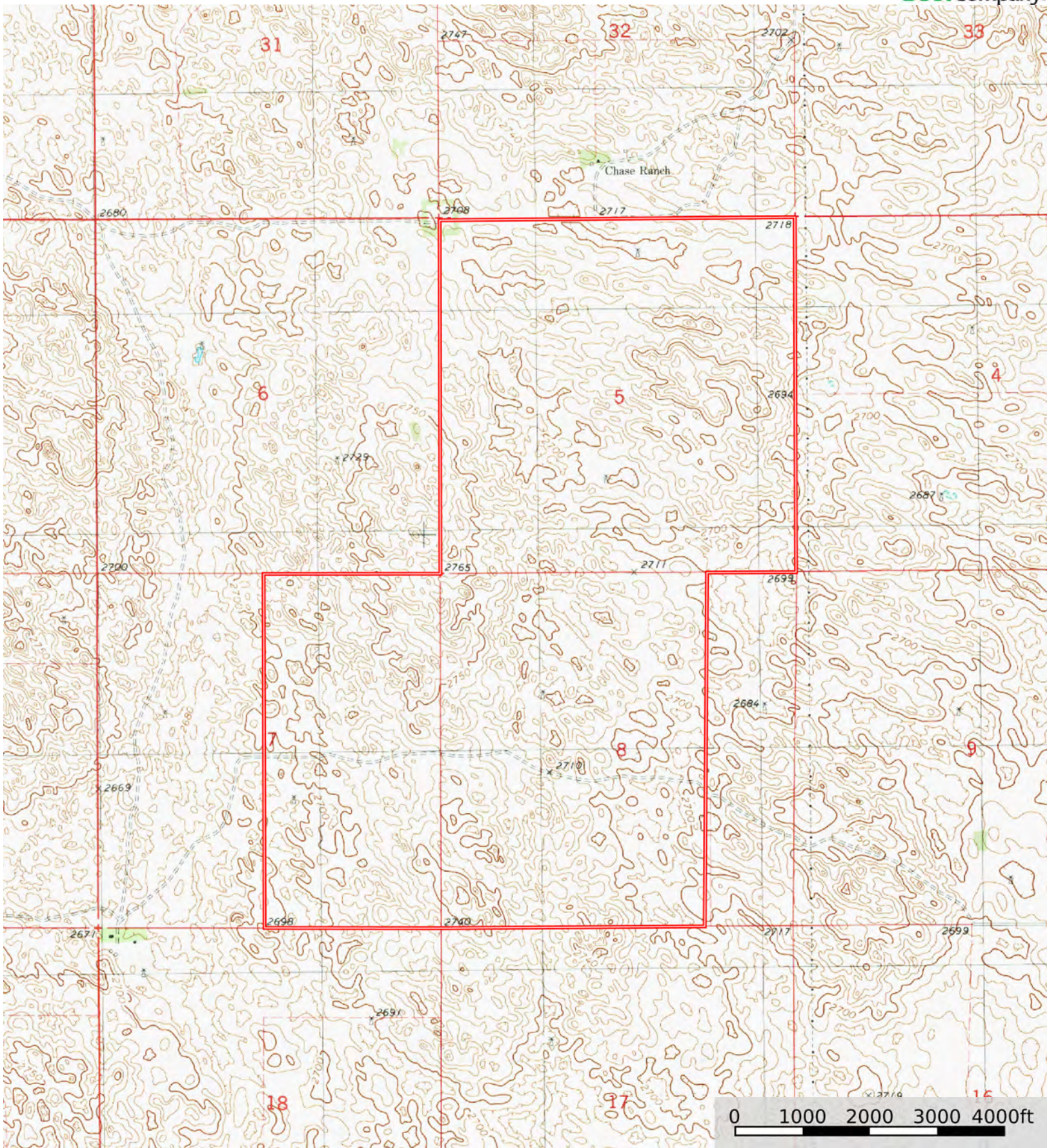
The information contained herein was obtained from sources deemed to be reliable. Land id™ Services makes no warranties or guarantees as to the completeness or accuracy thereof.

| Boundary 1436.05 ac

SOIL CODE	SOIL DESCRIPTION	ACRES	%	CPI	NCCPI	CAP
4806	Valentine fine sand, rolling, 9 to 24 percent slopes, moist	714.64	49.76	0	25	6e
4809	Valentine fine sand, rolling and hilly, 9 to 60 percent slopes , moist	535.43	37.28	0	19	6e
4820	Valentine loamy fine sand, 3 to 9 percent slopes, moist	86.4	6.02	0	32	6e
4792	Valentine fine sand, 3 to 9 percent slopes, moist	55.46	3.86	0	31	6e
4873	Valentine-Sandose loamy fine sands, 0 to 9 percent slopes	19.17	1.33	0	34	6e
4858	Valentine-Els complex, moist, 0 to 9 percent slopes	17.71	1.23	0	29	6e
4730	Sandose loamy fine sand, 0 to 3 percent slopes	3.87	0.27	0	50	3e
9004	Anselmo fine sandy loam, 3 to 6 percent slopes	3.37	0.23	54	40	3e
TOTALS		1436.05(*)	100%	0.13	23.69	5.98

(*) Total acres may differ in the second decimal compared to the sum of each acreage soil. This is due to a round error because we only show the acres of each soil with two decimal.





Boundary

