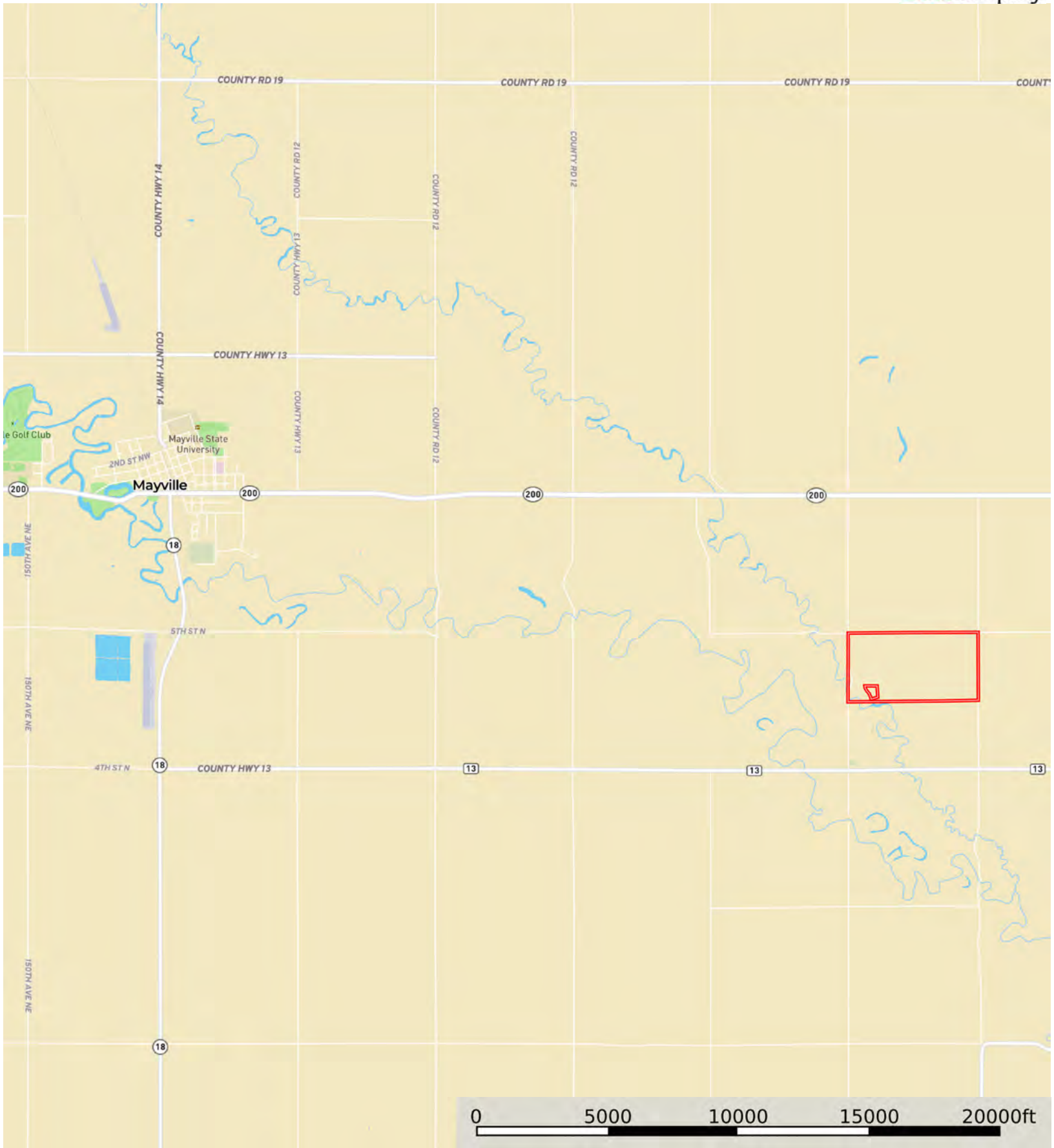


L-2400529

Trail County, North Dakota, 296.66 AC +/-



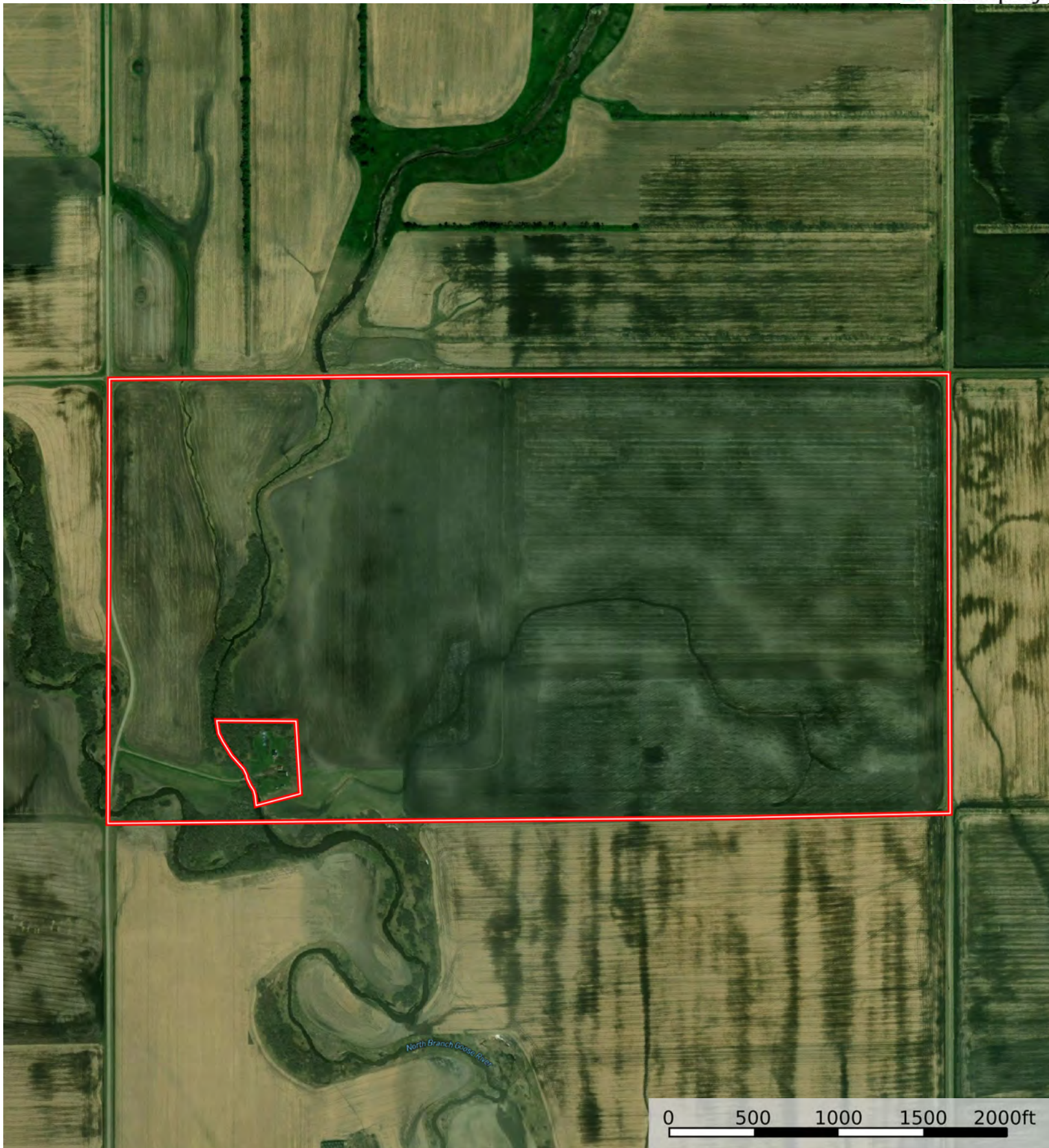
Boundary



The information contained herein was obtained from sources deemed to be reliable. Land id™ Services makes no warranties or guarantees as to the completeness or accuracy thereof.

L-2400529

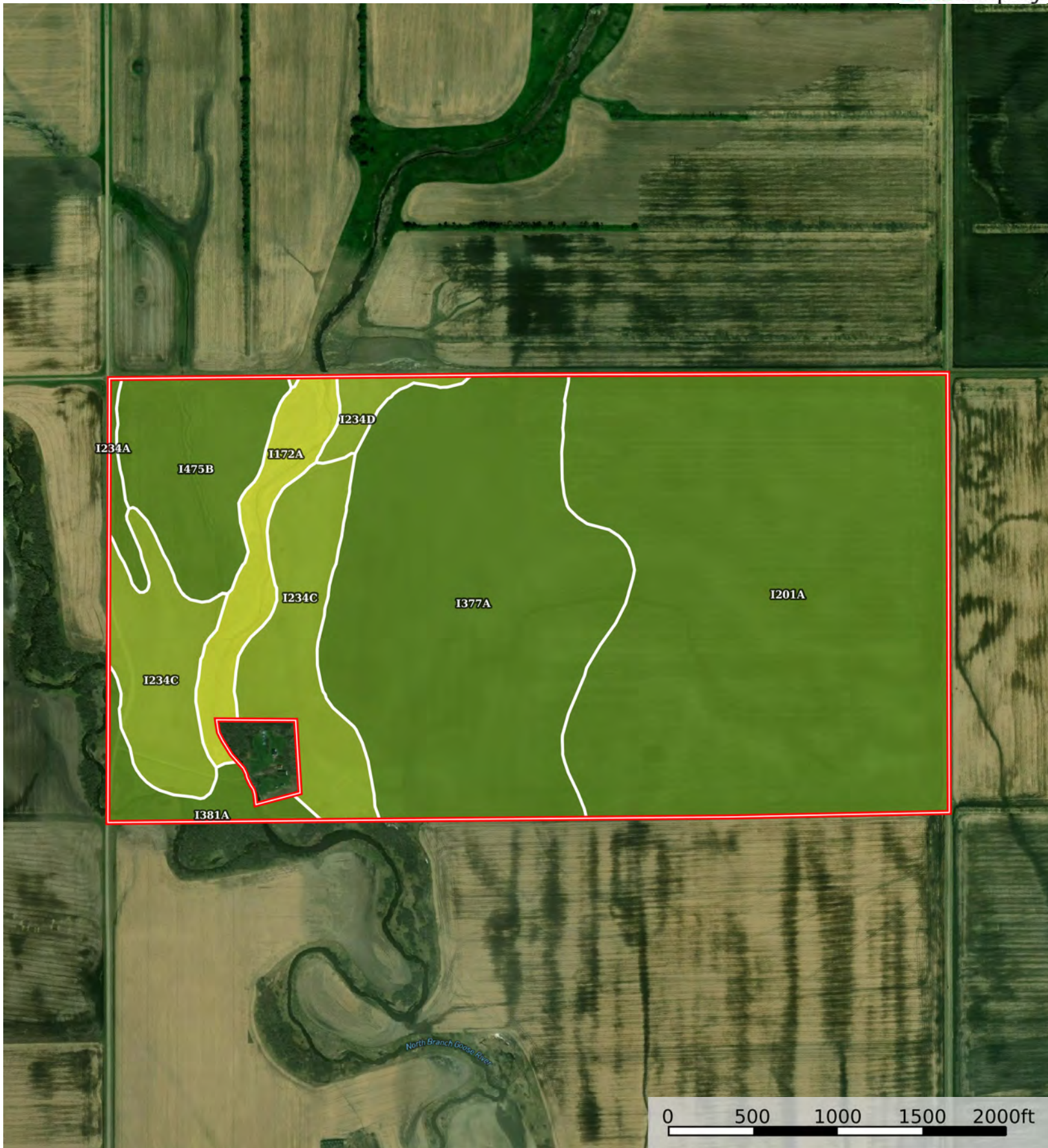
Trail County, North Dakota, 296.66 AC +/-



Boundary

L-2400529

Trail County, North Dakota, 296.66 AC +/-



Boundary



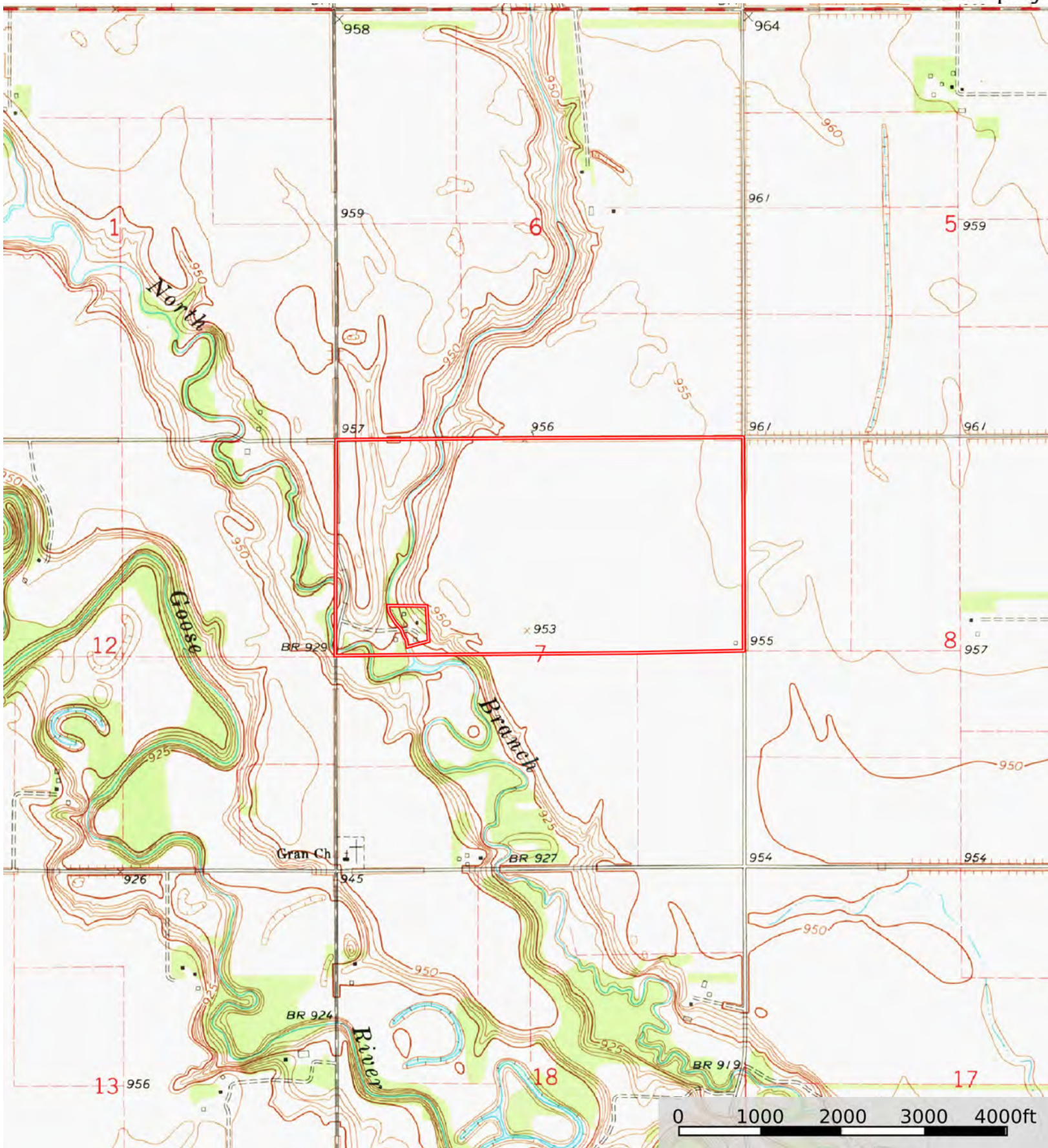
The information contained herein was obtained from sources deemed to be reliable. Land id™ Services makes no warranties or guarantees as to the completeness or accuracy thereof.

| Boundary 297.12 ac

SOIL CODE	SOIL DESCRIPTION	ACRES	%	CPI	NCCPI	CAP
I201A	Glyndon silt loam, 0 to 2 percent slopes	130.03	43.76	92	55	2e
I377A	Wheatville silt loam, 0 to 2 percent slopes	84.11	28.31	85	61	2e
I234C	Nutley silty clay, 6 to 9 percent slopes	36.43	12.26	64	41	3e
I475B	Sinai silty clay, levees, 0 to 6 percent slopes	21.2	7.14	88	47	2e
I172A	Playmooer silty clay loam, 0 to 1 percent slopes, occasionally flooded	12.38	4.17	35	37	4w
I381A	LaDelle silty clay loam, 0 to 2 percent slopes, occasionally flooded	7.05	2.37	90	72	2c
I234D	Nutley silty clay, 9 to 15 percent slopes	3.49	1.17	52	39	3e
I234A	Fargo-Nutley silty clays, 0 to 2 percent slopes	2.43	0.82	81	48	2w
TOTALS		297.12(*)	100%	83.32	53.82	2.22

(\*) Total acres may differ in the second decimal compared to the sum of each acreage soil. This is due to a round error because we only show the acres of each soil with two decimal.





Boundary