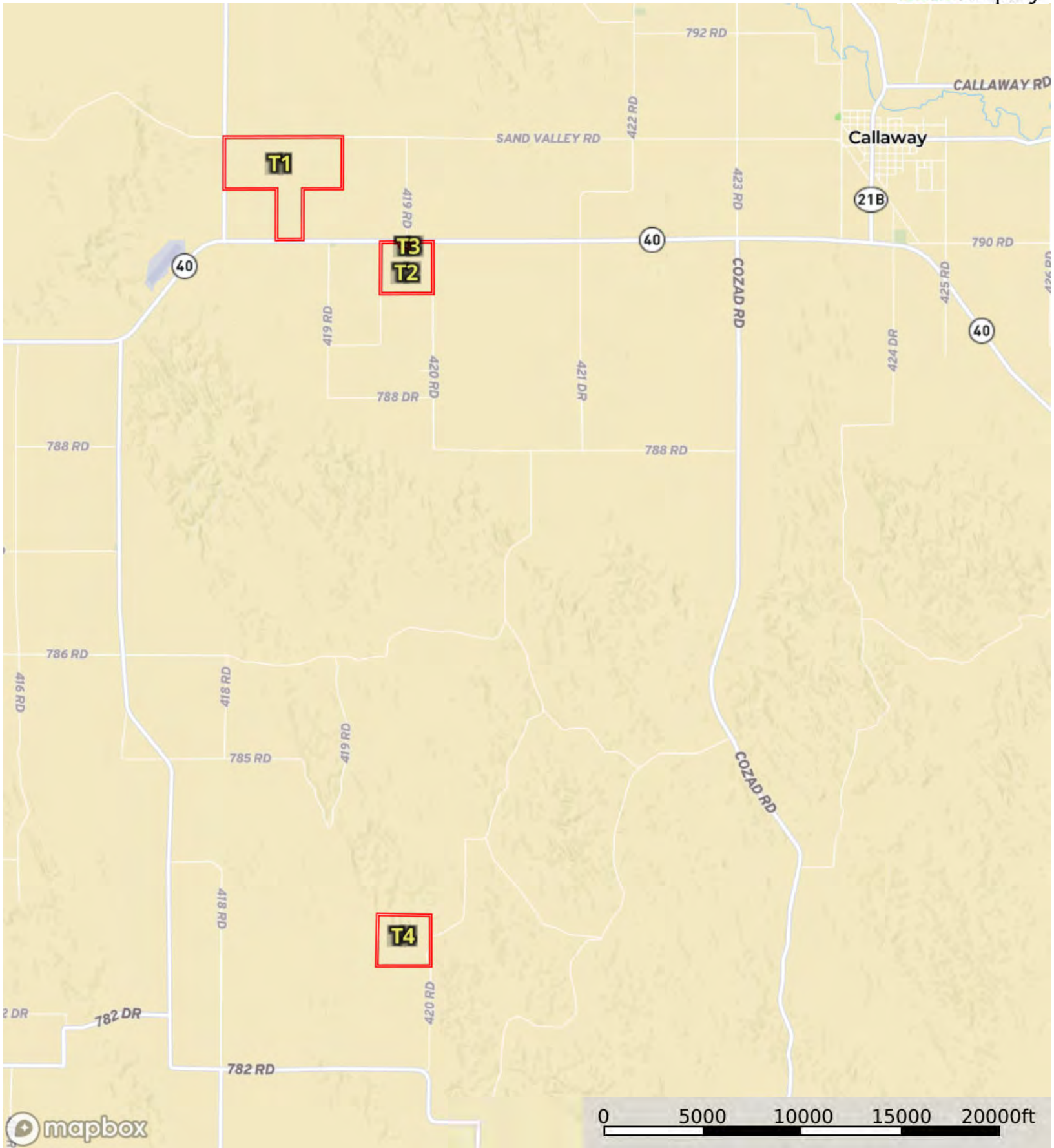


L-2400530

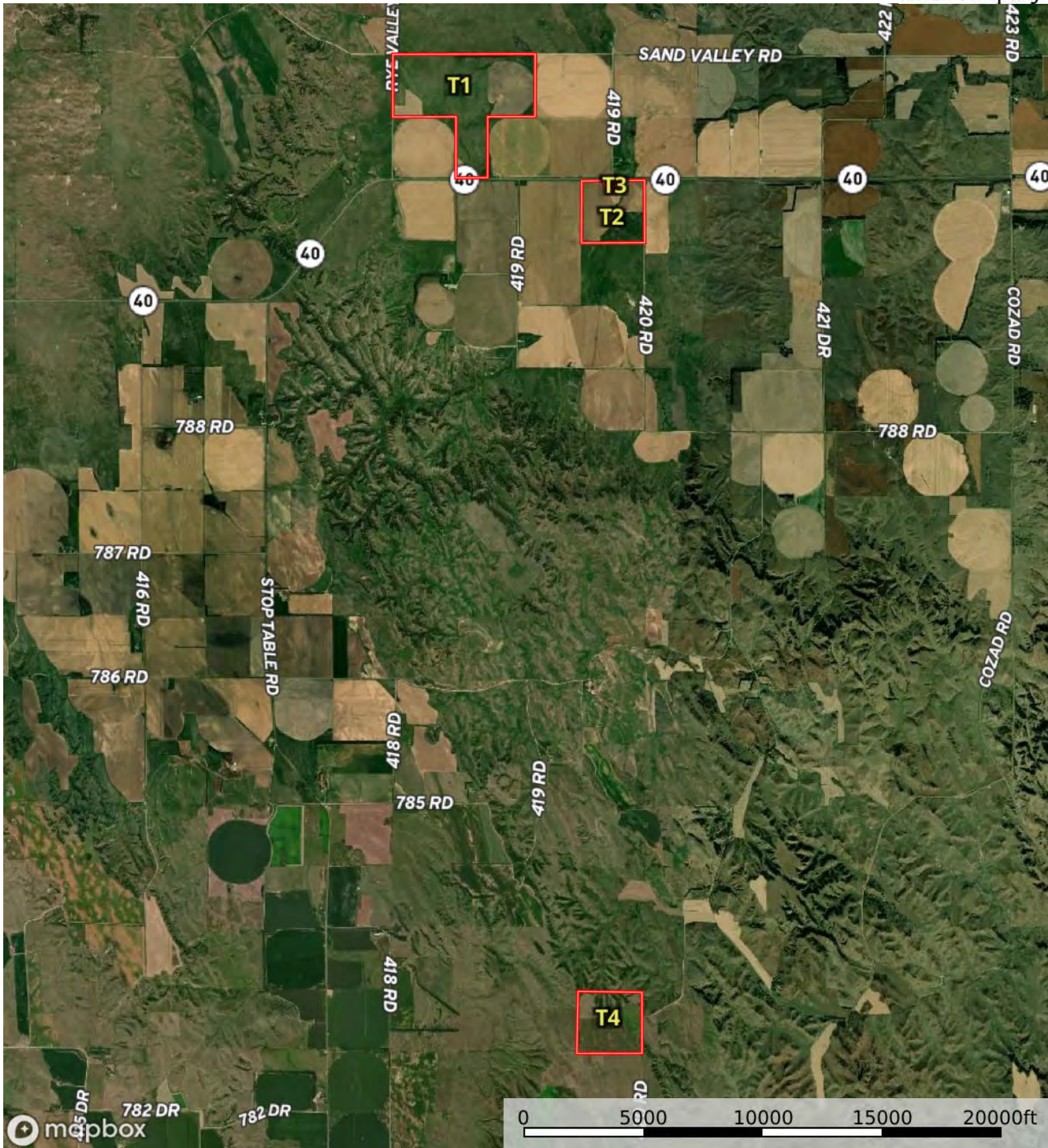
Custer County, Nebraska, 758.38 AC +/-



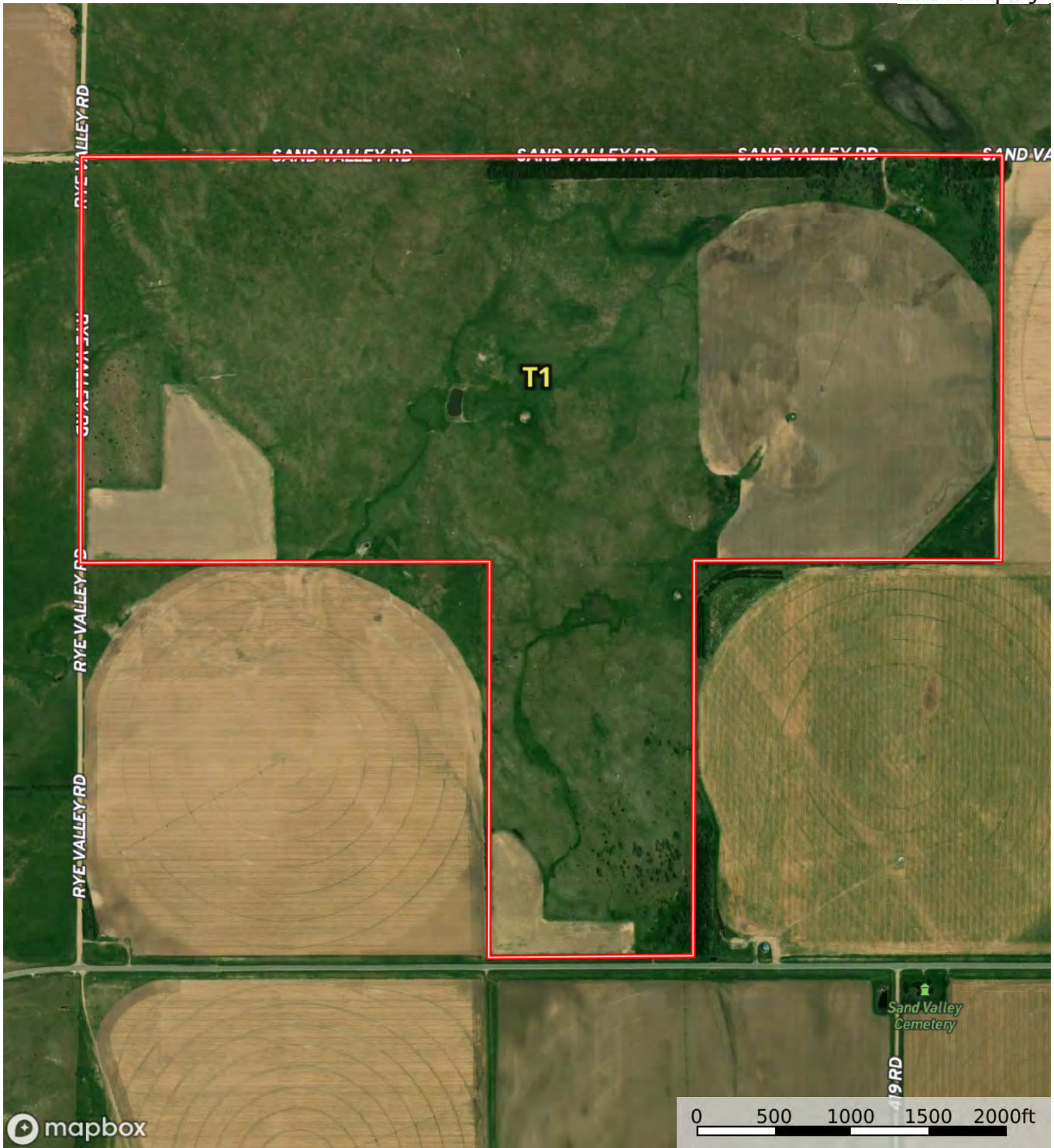
Boundary

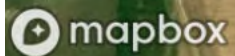
L-2400530

Custer County, Nebraska, 758.38 AC +/-



Boundary





Boundary

| Boundary 438.57 ac

SOIL CODE	SOIL DESCRIPTION	ACRES	%	CPI	NCCPI	CAP
4818	Valentine loamy fine sand, 3 to 9 percent slopes	157.09	35.82	21	30	6e
4834	Valentine loamy fine sand, rolling, 9 to 24 percent slopes	113.25	25.82	0	28	6e
3710	Cass fine sandy loam, rarely flooded	78.4	17.88	0	48	2e
9081	Rusco silty clay loam, 0 to 1 percent slopes	26.28	5.99	0	31	2w
8816	Cozad silt loam, 1 to 3 percent slopes	19.86	4.53	0	70	2e
2597	Hersh fine sandy loam, 6 to 11 percent slopes	12.2	2.78	0	48	4e
2611	Hersh-Valentine complex, 11 to 30 percent slopes	11.78	2.69	0	28	6e
9039	Gates very fine sandy loam, 11 to 17 percent slopes	7.25	1.65	0	46	6e
2595	Hersh fine sandy loam, 0 to 3 percent slopes	7	1.6	0	50	3e
8815	Cozad silt loam, 0 to 1 percent slopes	2.29	0.52	0	70	2c
3912	Scott silty clay loam, frequently ponded	2.02	0.46	0	26	4w
4485	Dunday loamy fine sand, 0 to 3 percent slopes	1.15	0.26	0	37	4e
TOTALS		438.57(*)	100%	7.52	35.81	4.73









(*) Total acres may differ in the second decimal compared to the sum of each acreage soil. This is due to a round error because we only show the acres of each soil with two decimal.

Capability Legend

Increased Limitations and Hazards

Decreased Adaptability and Freedom of Choice Users

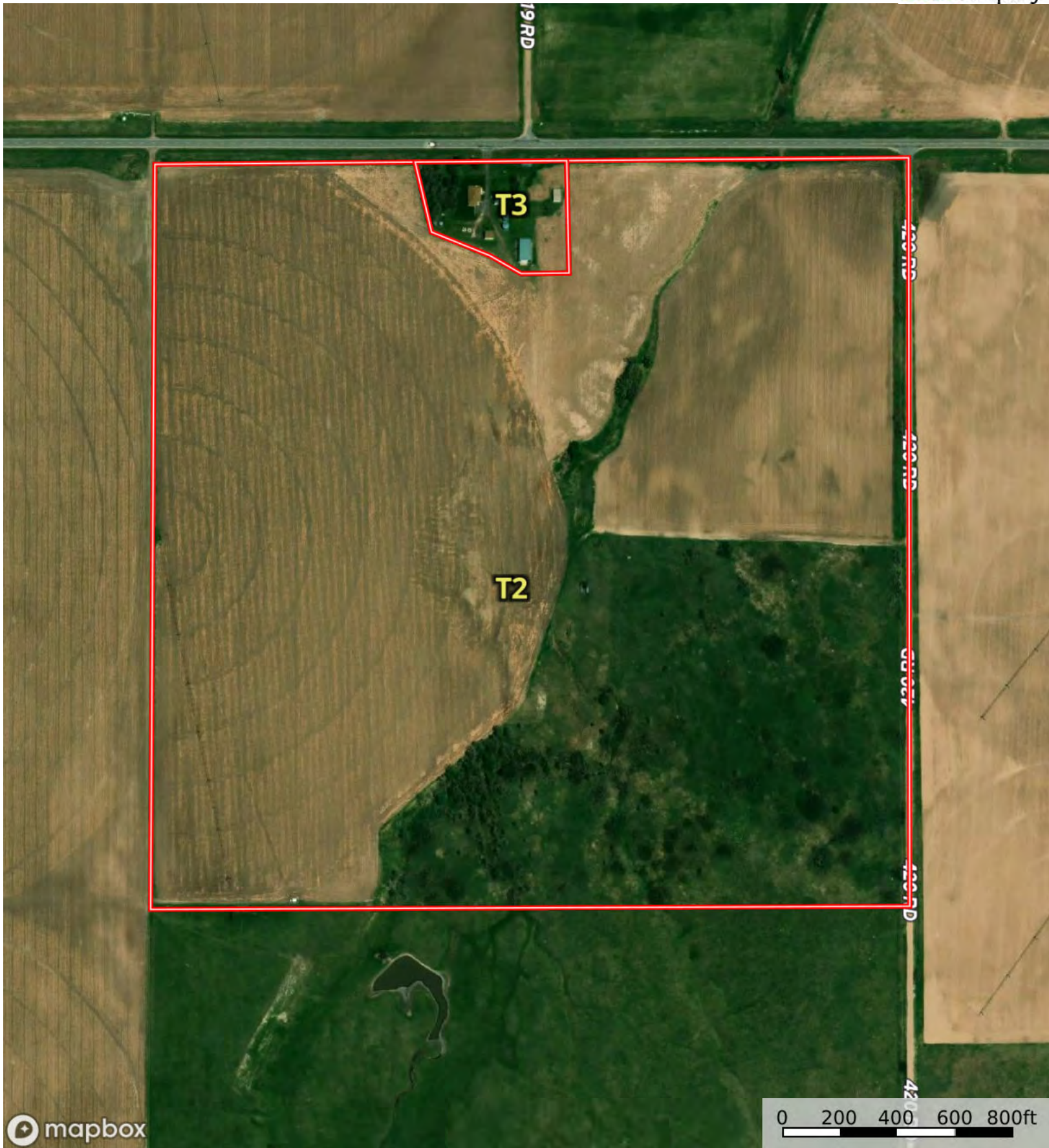
Land, Capability

								
	1	2	3	4	5	6	7	8
'Wild Life'	•	•	•	•	•	•	•	•
Forestry	•	•	•	•	•	•	•	
Limited	•	•	•	•	•	•	•	
Moderate	•	•	•	•	•	•		
Intense	•	•	•	•	•			
Limited	•	•	•	•				
Moderate	•	•	•					
Intense	•	•						
Very Intense	•							

Grazing Cultivation

(c) climatic limitations (e) susceptibility to erosion

(s) soil limitations within the rooting zone (w) excess of water





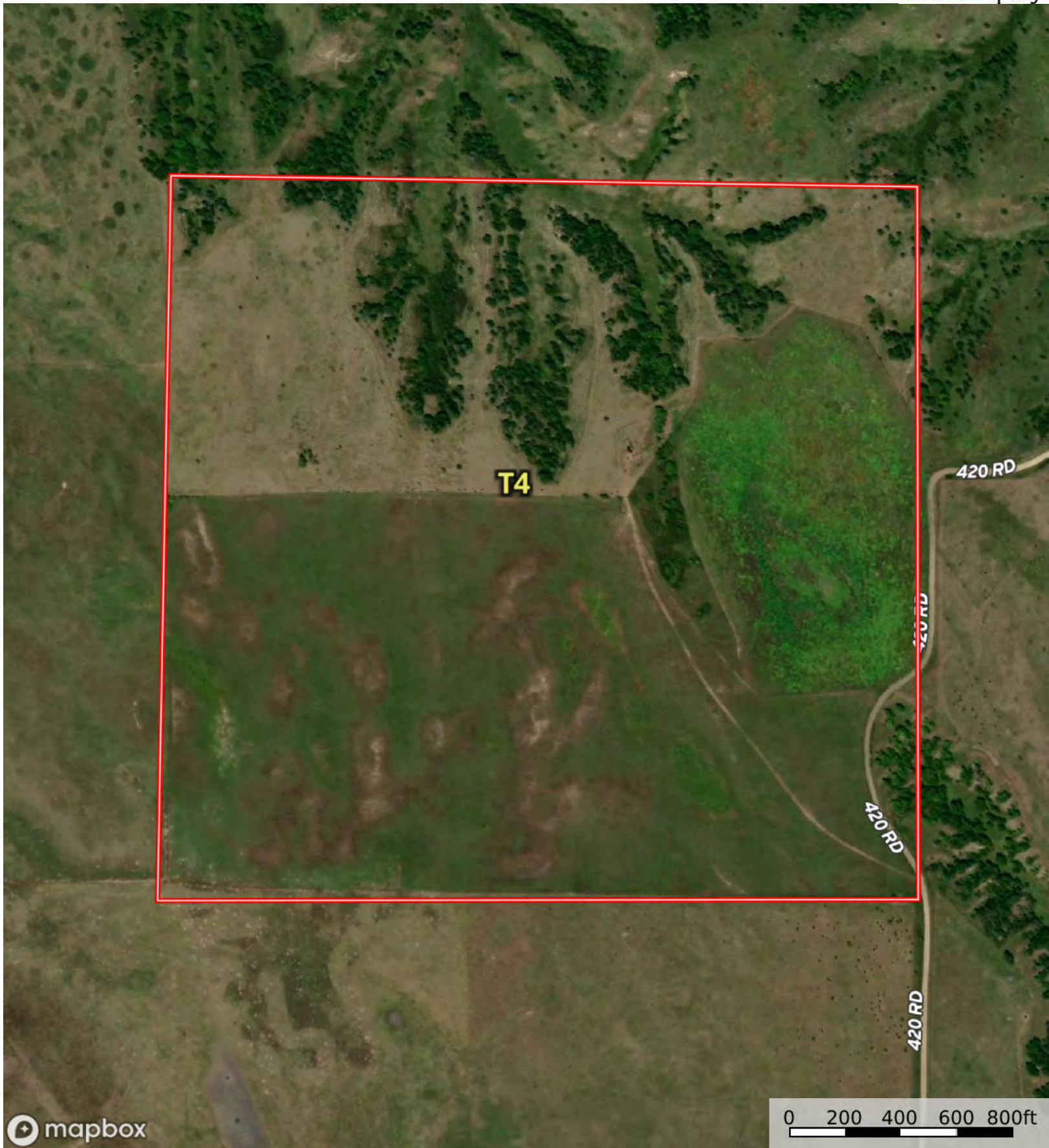
| Boundary 154.31 ac

SOIL CODE	SOIL DESCRIPTION	ACRES	%	CPI	NCCPI	CAP
8815	Cozad silt loam, 0 to 1 percent slopes	45.5	29.49	0	70	2c
2611	Hersh-Valentine complex, 11 to 30 percent slopes	31.6	20.48	0	28	6e
3710	Cass fine sandy loam, rarely flooded	23.86	15.46	0	48	2e
2597	Hersh fine sandy loam, 6 to 11 percent slopes	20.71	13.42	0	48	4e
2595	Hersh fine sandy loam, 0 to 3 percent slopes	16.85	10.92	0	50	3e
4814	Valentine loamy fine sand, 0 to 3 percent slopes	9.72	6.3	25	30	4e
4818	Valentine loamy fine sand, 3 to 9 percent slopes	6.07	3.93	21	30	6e
TOTALS		154.3 1(*)	100%	2.4	48.77	3.48

(*) Total acres may differ in the second decimal compared to the sum of each acreage soil. This is due to a round error because we only show the acres of each soil with two decimal.

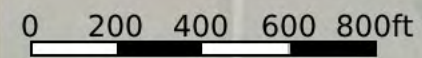
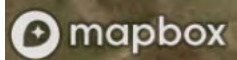
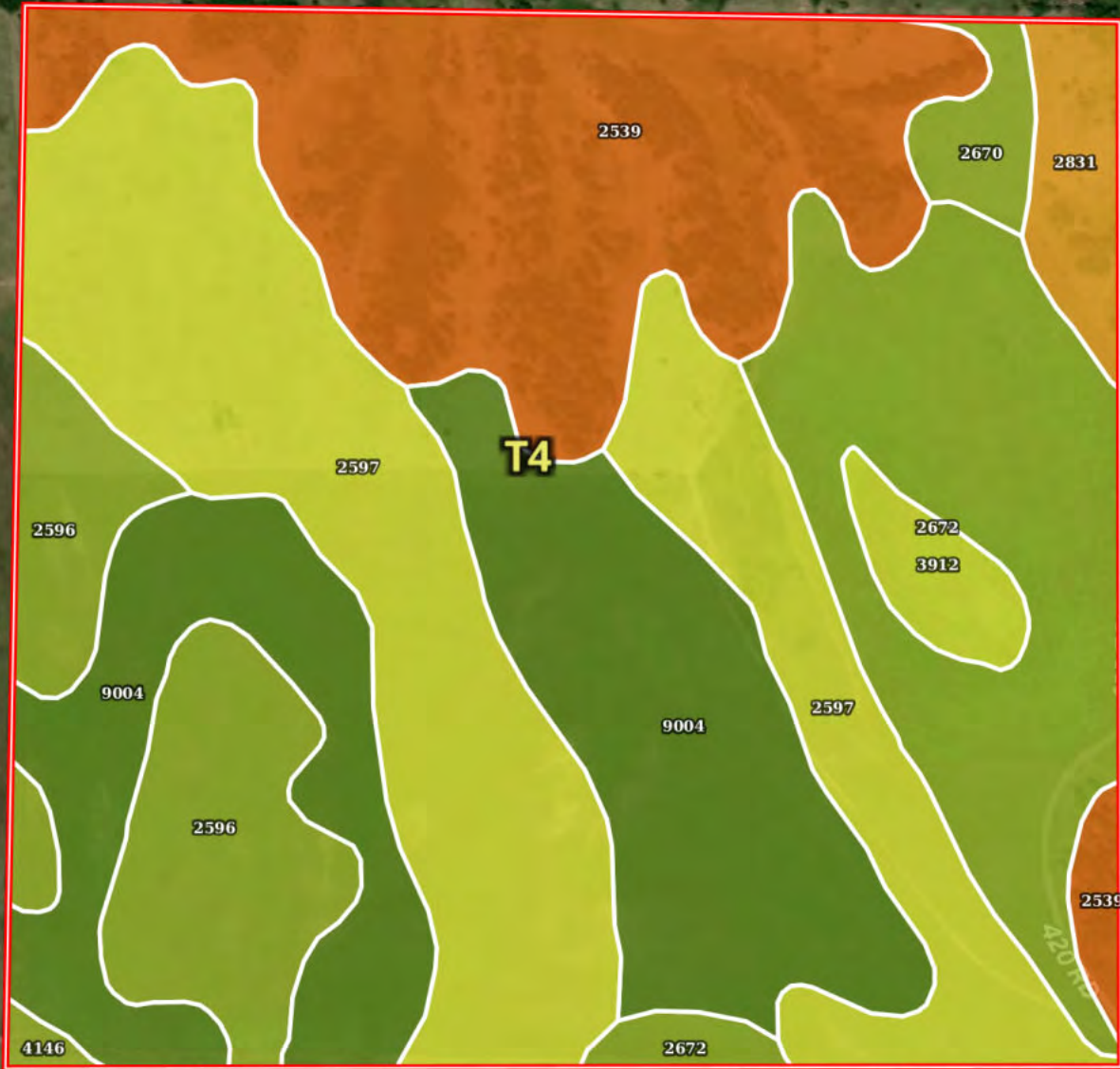






L-2400530

Custer County, Nebraska, 758.38 AC +/-



Boundary

Boundary 161.32 ac

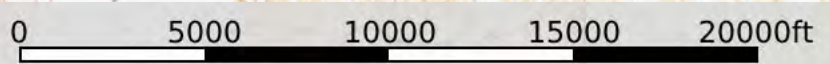
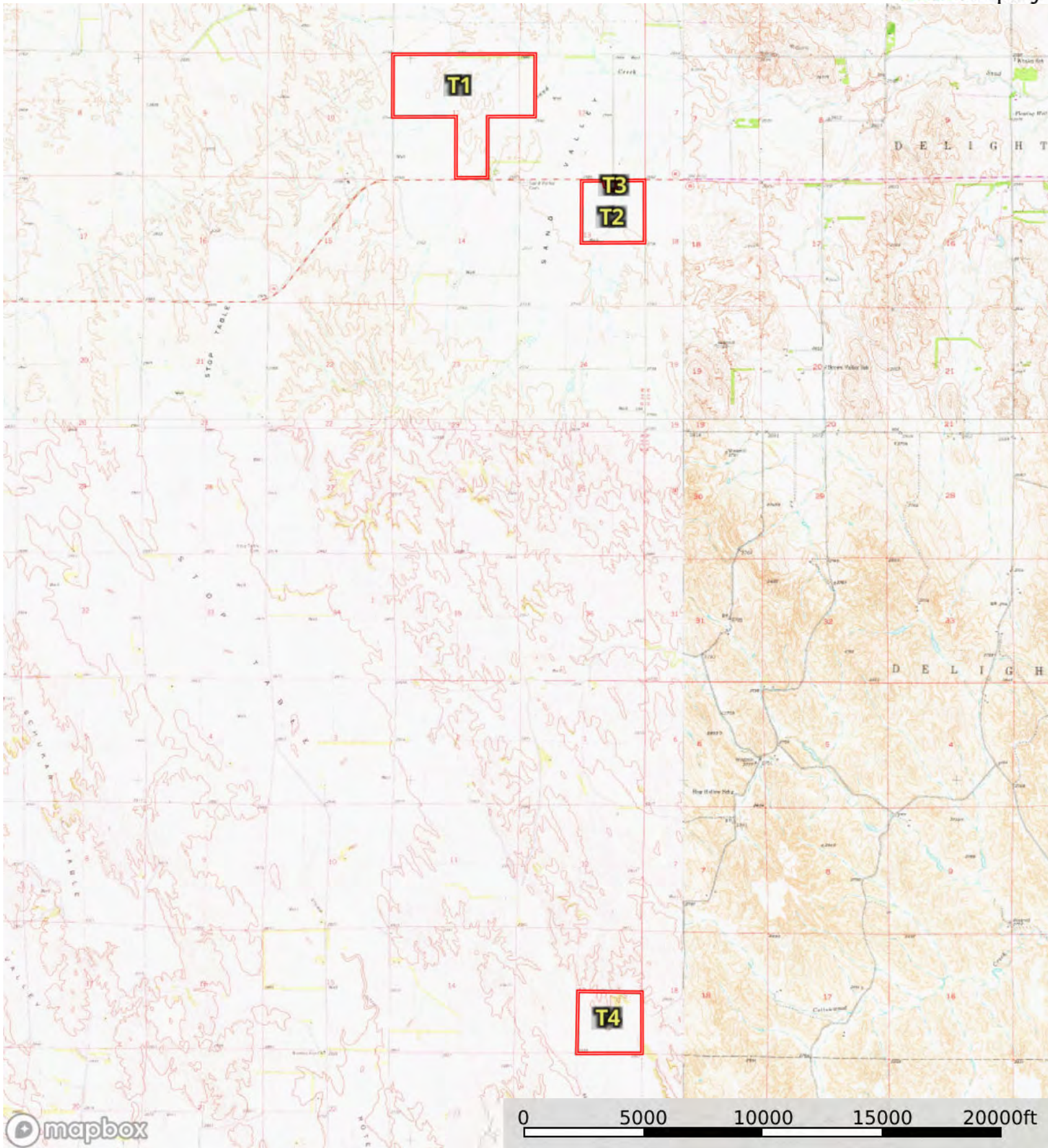
SOIL CODE	SOIL DESCRIPTION	ACRES	%	CPI	NCCPI	CAP
2597	Hersh fine sandy loam, 6 to 11 percent slopes	43.4	26.91	0	48	4e
9004	Anselmo fine sandy loam, 3 to 6 percent slopes	35.97	22.3	0	42	2e
2539	Coly-Hobbs silt loams, 3 to 60 percent slopes	33.34	20.67	0	24	7e
2672	Holdrege silty clay loam, 3 to 7 percent slopes, eroded	23.75	14.72	0	63	3e
2596	Hersh fine sandy loam, 3 to 6 percent slopes	15.28	9.47	0	49	3e
2831	Uly-Coly silt loams, 17 to 30 percent slopes, eroded	3.85	2.39	0	49	6e
3912	Scott silty clay loam, frequently ponded	2.75	1.7	0	26	4w
2670	Holdrege silt loam, 3 to 7 percent slopes	2.47	1.53	0	73	3e
4146	Holdrege silty clay loam, 7 to 11 percent slopes, eroded	0.51	0.32	0	62	3e
TOTALS		161.3 2(*)	100%	-	44.09	3.96

(*) Total acres may differ in the second decimal compared to the sum of each acreage soil. This is due to a round error because we only show the acres of each soil with two decimal.



L-2400530

Custer County, Nebraska, 758.38 AC +/-



Boundary