



Farmers  
National  
Company

[www.FarmersNational.com/Laurel](http://www.FarmersNational.com/Laurel)

L-2400535



SCAN THE QR CODE  
FOR MORE INFO!



# HOME FOR SALE

216 East Elm | Coleridge, Nebraska

OFFERED AT  
**\$195,000**

## Highlights:

- Fully remodeled
- All new appliances
- Large corner lot



**For additional information, please contact:**

**Wendi Schutte, Broker**

**[WSchutte@FarmersNational.com](mailto:WSchutte@FarmersNational.com)**

**Cell: (402) 518-0115**

MULTIPLE LISTING SERVICE

**MLS** <sup>TM</sup>



EQUAL HOUSING  
OPPORTUNITY

# Property Information

## Property Address:

- 216 East Elm Street, Coleridge, Nebraska 68727

## Property Description:

This home was completely remodeled in 2023/2024. Gutted to the studs and then everything reconstructed brand new! Walking in, the house smells brand new! To start, a bedroom was added to the main floor, along with a larger eat in kitchen, all new cabinetry that features "soft touch" closure & new appliances. Laundry on main floor along with a main full-size bathroom. Main floor also has a mud room you walk into from the back of the house. Upstairs is 2 more bedrooms, and an additional fully remodeled bathroom. All brand new flooring throughout. This house sits on a very large lot, so ton of yard and room. Also added to this home was a large 2 car garage with separate garage doors & openers, and a partial storm shelter/ storage room that you enter from the back of the house. There is a small basement under the house. Located right behind the school, and walking distance to the park, and downtown area.

## 2024 Taxes:

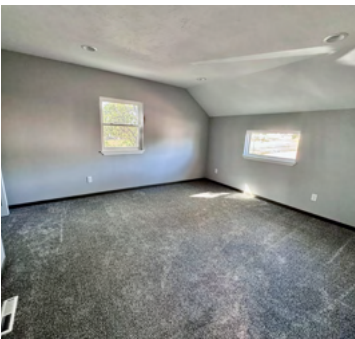
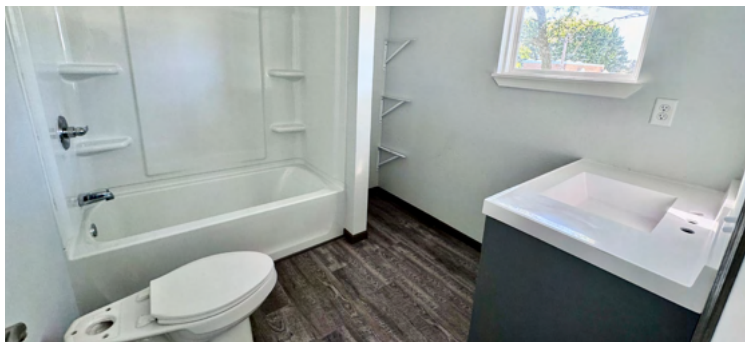
- \$473

## Price:

- \$195,000

### Estimated Room Sizes

Bedroom	11.17' x 10.17'
Full Bathroom	11.34' x 9.59'
Kitchen w/ laundry	21.42' x 11.59'
Dining Room	13.25' x 11.92'
Living Room	17.17' x 15.50'
2 Car Attached Garage	(528 sq. ft.) 22' x 24'
Basement	1,125 Sq. Ft.
Total Square Footage	1,439 Sq. Ft.



Information provided was obtained from sources deemed reliable, but the broker makes no guarantees as to its accuracy. All prospective buyers are urged to inspect the property, its title and to rely on their own conclusions. Seller reserves the right to refuse any or all offers submitted and may withdraw the property from offering without notice. Farmers National Company and its representatives on the reverse side are the Designated Agents for the seller.