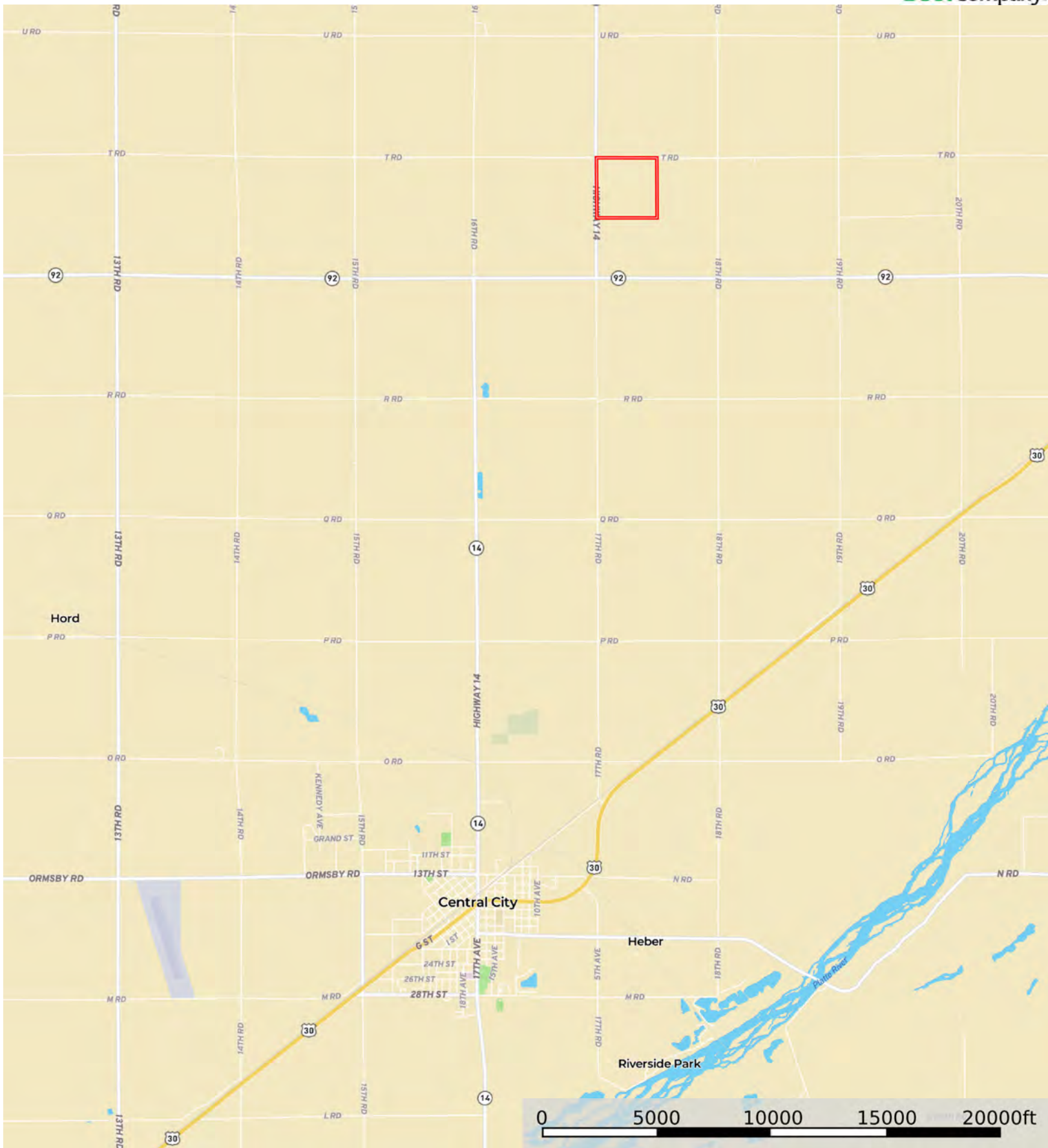


L-2400539

Merrick County, Nebraska, 159.42 AC +/-



Boundary



The information contained herein was obtained from sources deemed to be reliable. Land id™ Services makes no warranties or guarantees as to the completeness or accuracy thereof.



L-2400539

Merrick County, Nebraska, 159.42 AC +/-

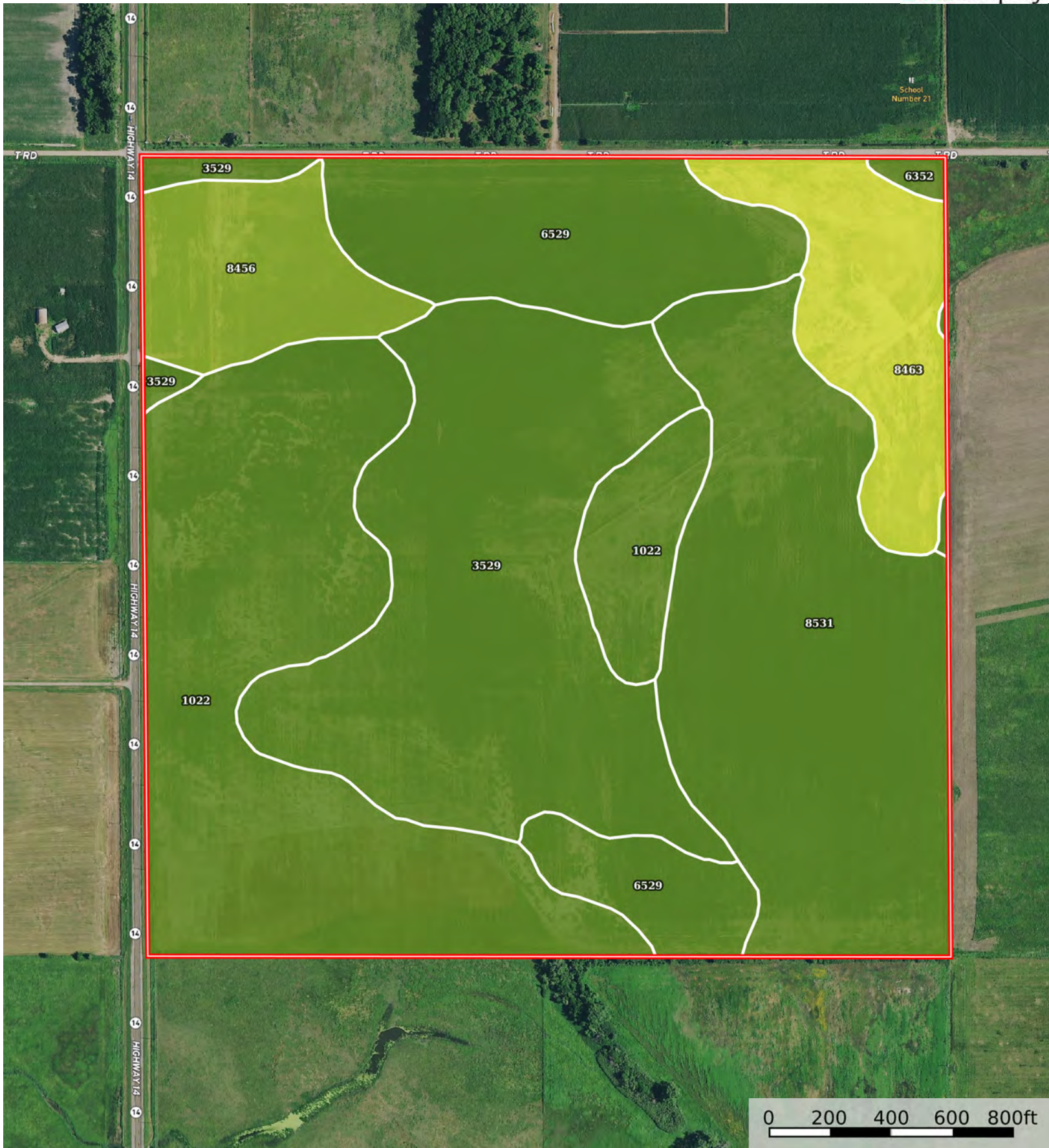


Boundary

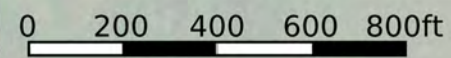


L-2400539

Merrick County, Nebraska, 159.42 AC +/-



Boundary



The information contained herein was obtained from sources deemed to be reliable. Land id™ Services makes no warranties or guarantees as to the completeness or accuracy thereof.

| Boundary 159.31 ac

SOIL CODE	SOIL DESCRIPTION	ACRES	%	CPI	NCCPI	CAP
1022	Caruso-Gayville complex, 0 to 1 percent slopes	42.81	26.87	0	51	2w
3529	Gibbon loam, occasionally flooded	38.17	23.96	0	68	2w
8531	Novina sandy loam, rarely flooded	35.71	22.42	0	59	2w
6529	Janude sandy loam, very rarely flooded	20.31	12.75	0	60	2e
8463	Gayville-Caruso complex, occasionally flooded	11.92	7.48	0	41	4s
8456	Fonner sandy loam, rarely flooded	9.59	6.02	0	47	3w
6352	Leshara silt loam, occasionally flooded	0.8	0.5	0	64	2w
TOTALS		159.3 1(*)	100%	-	57.09	2.21

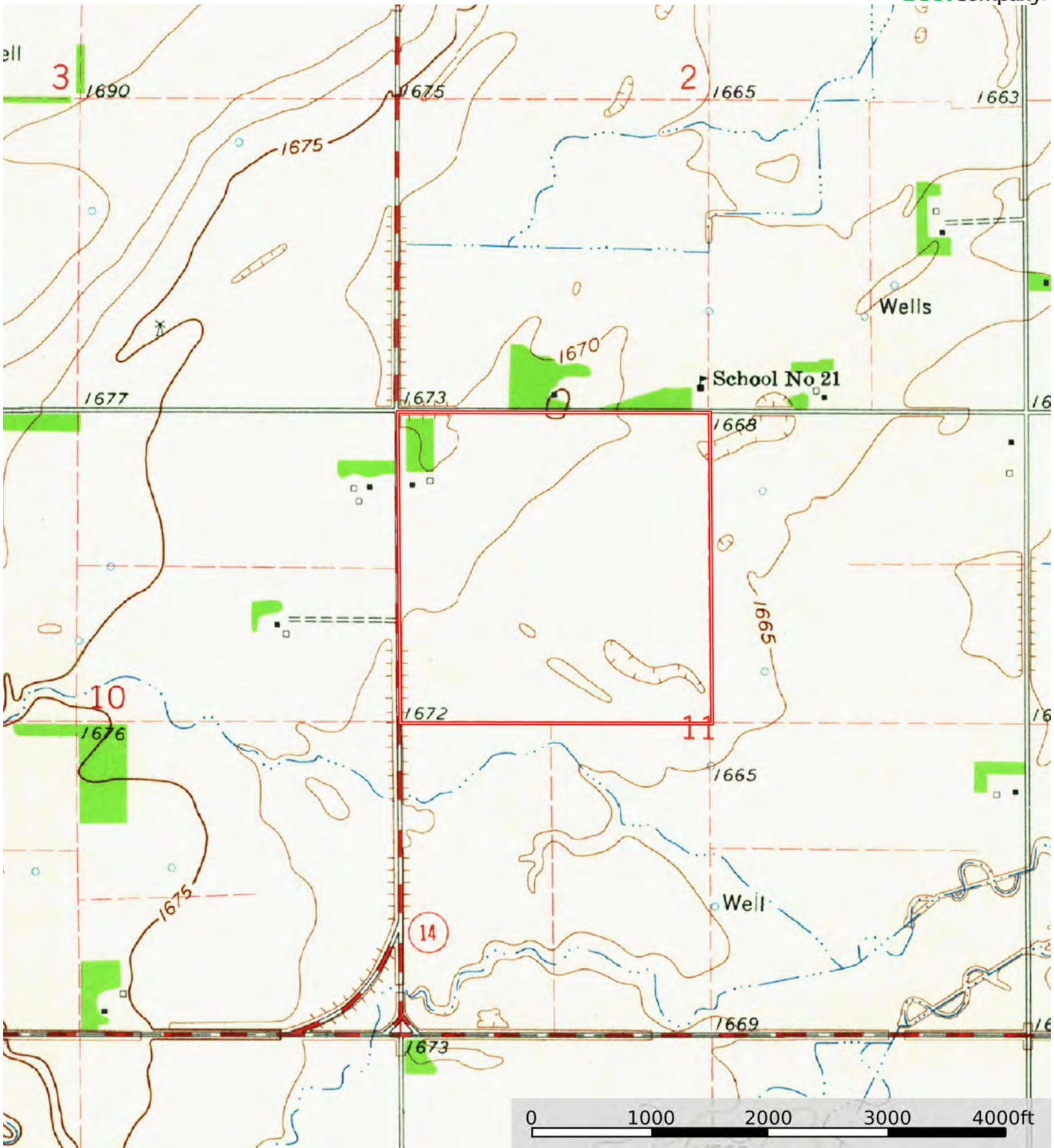
(\*) Total acres may differ in the second decimal compared to the sum of each acreage soil. This is due to a round error because we only show the acres of each soil with two decimal.





L-2400539

Merrick County, Nebraska, 159.42 AC +/-



Boundary



The information contained herein was obtained from sources deemed to be reliable. Land id™ Services makes no warranties or guarantees as to the completeness or accuracy thereof.