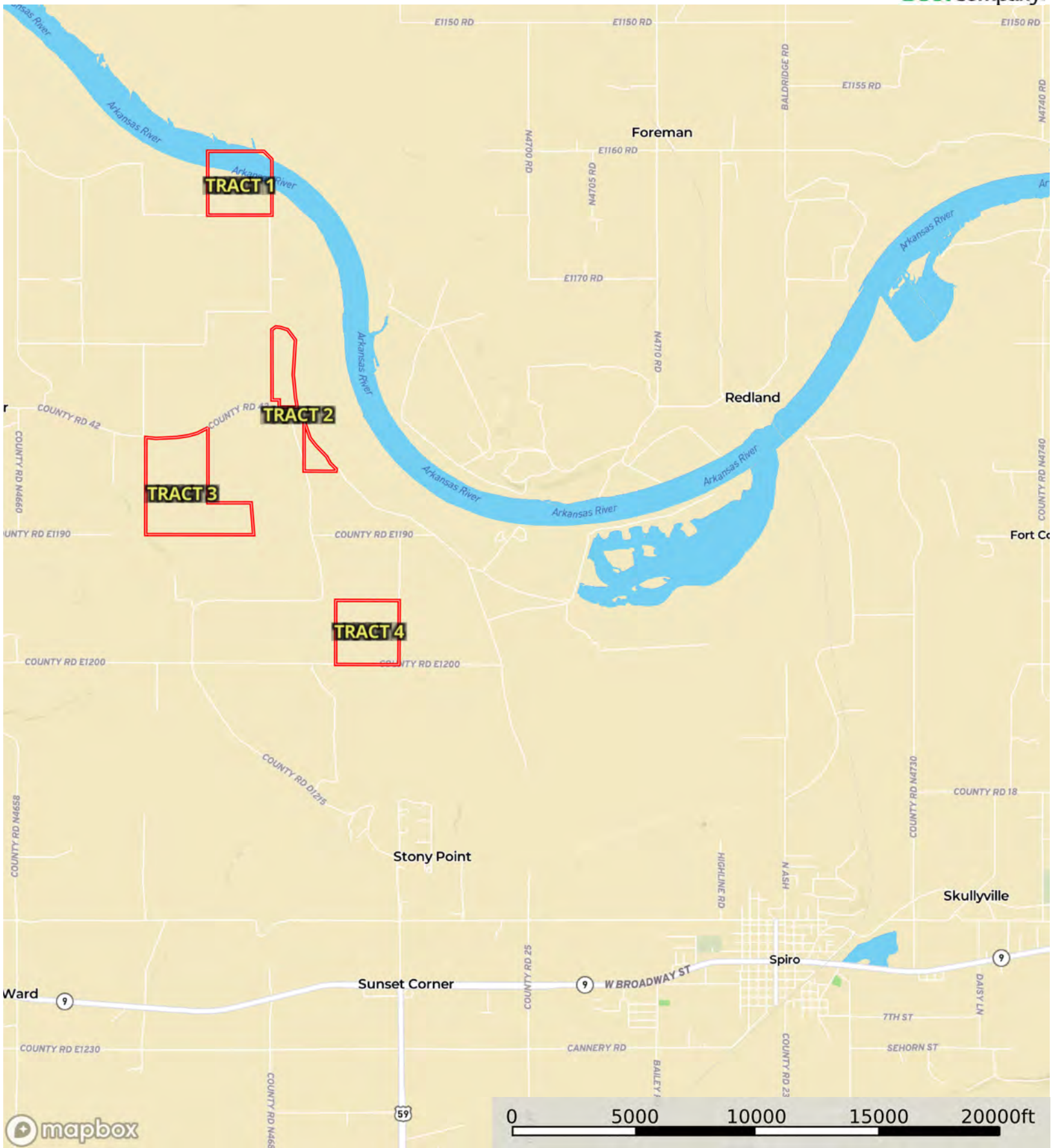


L-2400544

Le Flore County, Oklahoma, 713.39 AC +/-



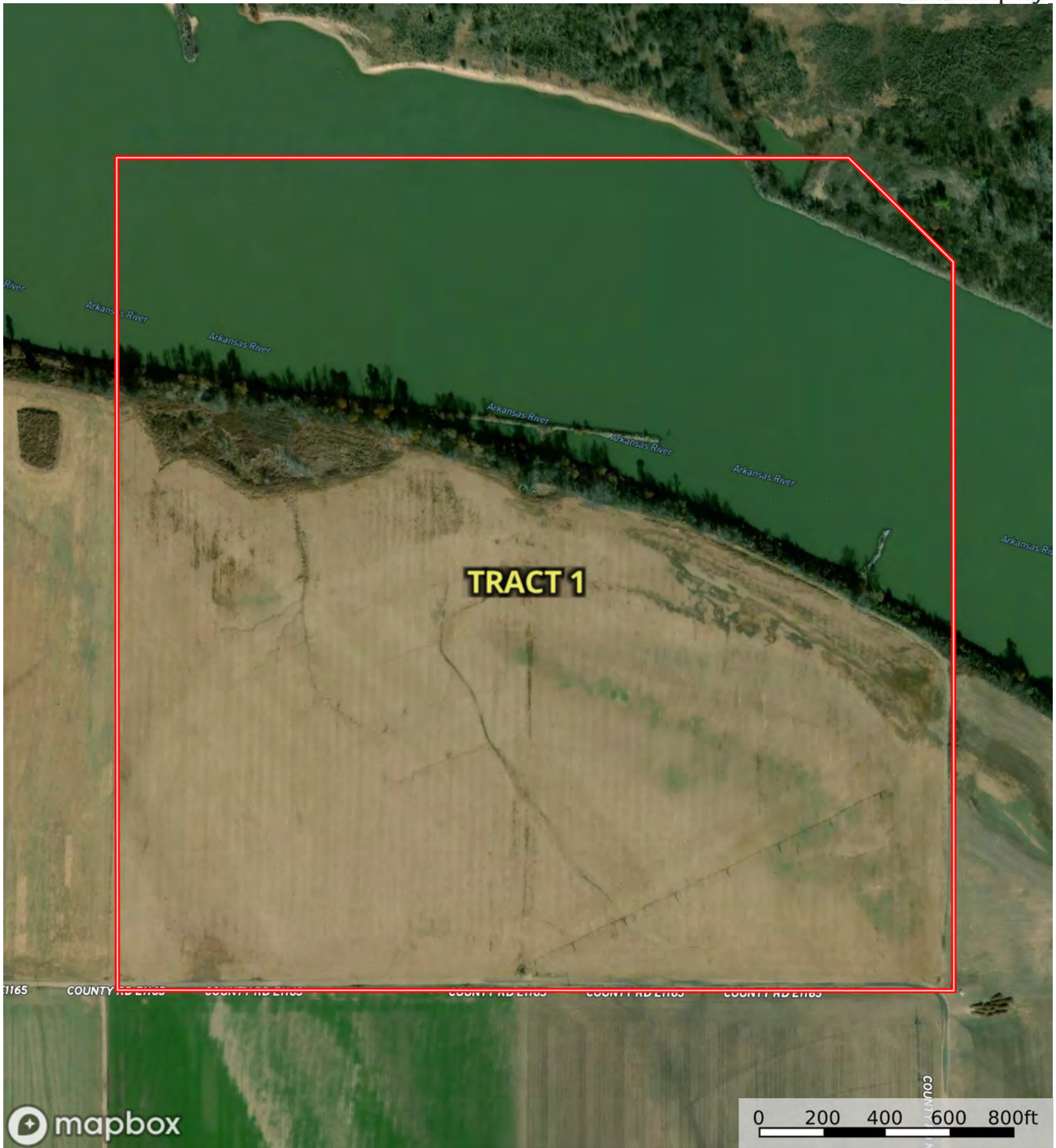
Boundary



The information contained herein was obtained from sources deemed to be reliable. Land id™ Services makes no warranties or guarantees as to the completeness or accuracy thereof.

L-2400544

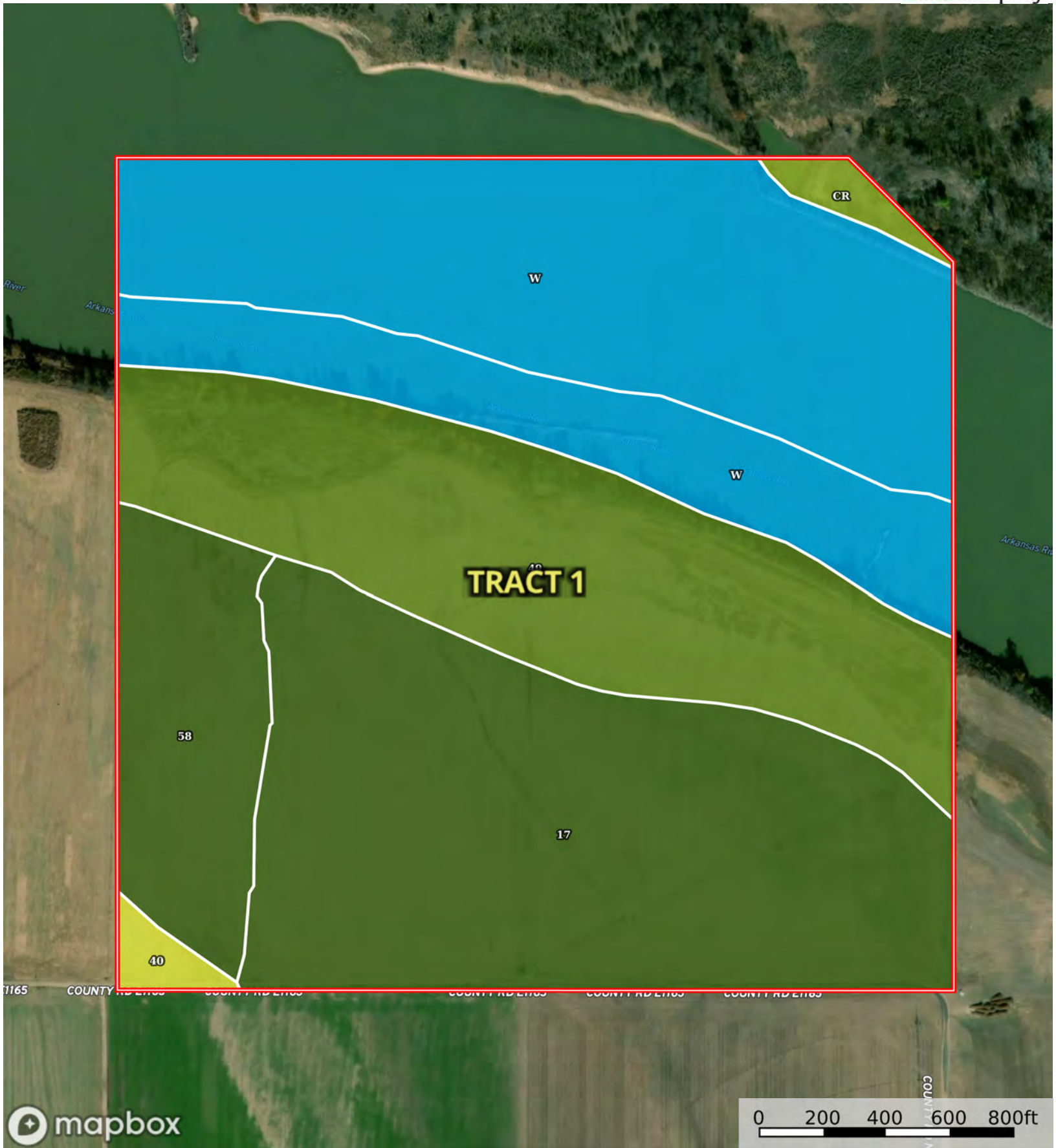
Le Flore County, Oklahoma, 713.39 AC +/-



Boundary

L-2400544

Le Flore County, Oklahoma, 713.39 AC +/-



Boundary

| Boundary 158.26 ac

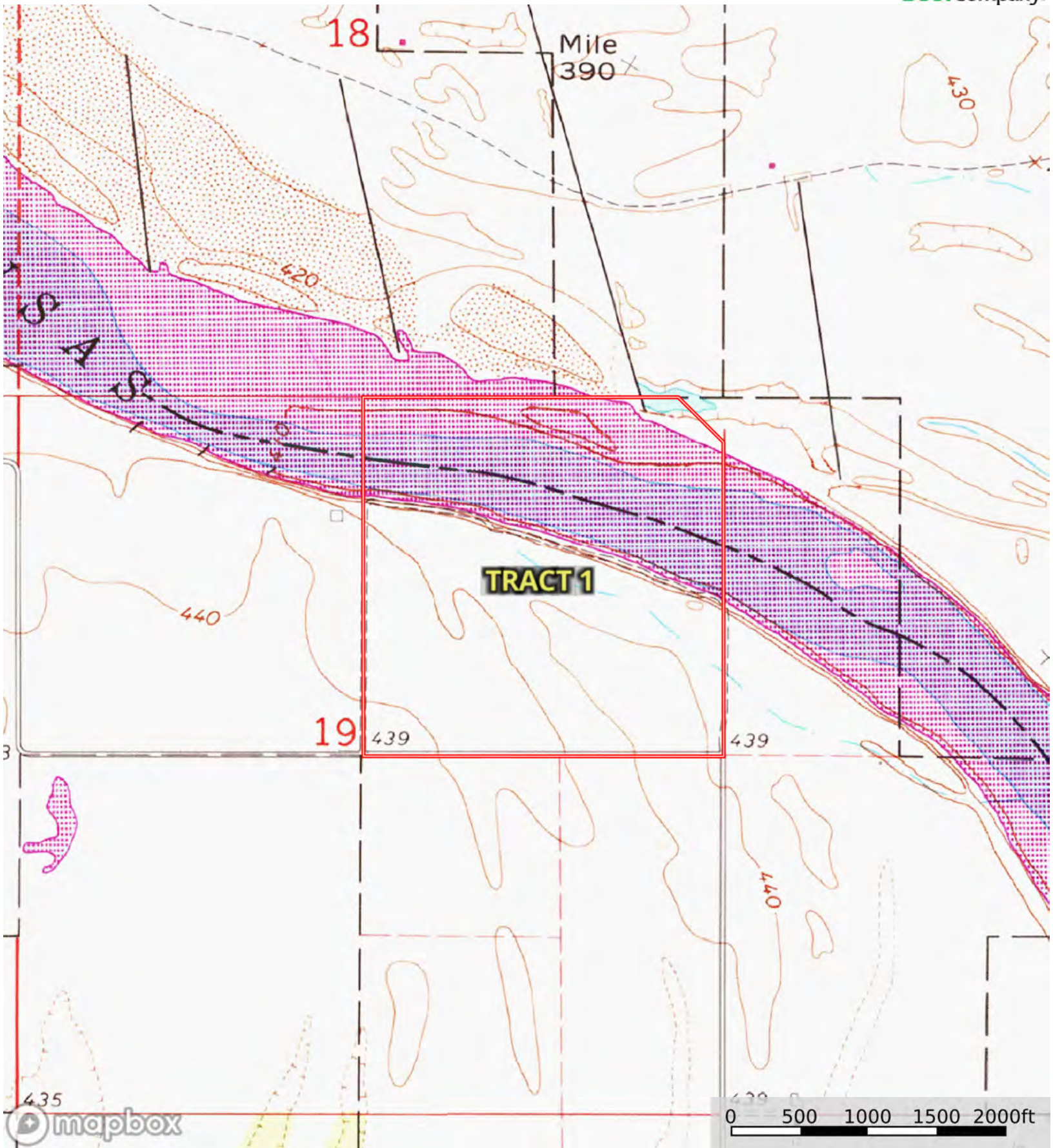
SOIL CODE	SOIL DESCRIPTION	ACRES	%	CPI	NCCPI	CAP
W	Water	55.91	35.33	0	-	8
17	Coushatta silt loam, 0 to 1 percent slopes, rarely flooded	50.13	31.68	0	90	1
49	Oklared fine sandy loam, 0 to 1 percent slopes, rarely flooded	35.58	22.48	0	85	2e
58	Roxana very fine sandy loam, 0 to 1 percent slopes, rarely flooded	13.66	8.63	0	90	1
Cr	Kiomatia loamy fine sand, 0 to 3 percent slopes, occasionally flooded	1.58	1.0	0	40	3e
40	Moreland silty clay loam, 0 to 1 percent slopes, rarely flooded	1.4	0.88	0	63	4w
TOTALS		158.26(*)	100%	-	56.34	3.74

(*) Total acres may differ in the second decimal compared to the sum of each acreage soil. This is due to a round error because we only show the acres of each soil with two decimal.



L-2400544

Le Flore County, Oklahoma, 713.39 AC +/-



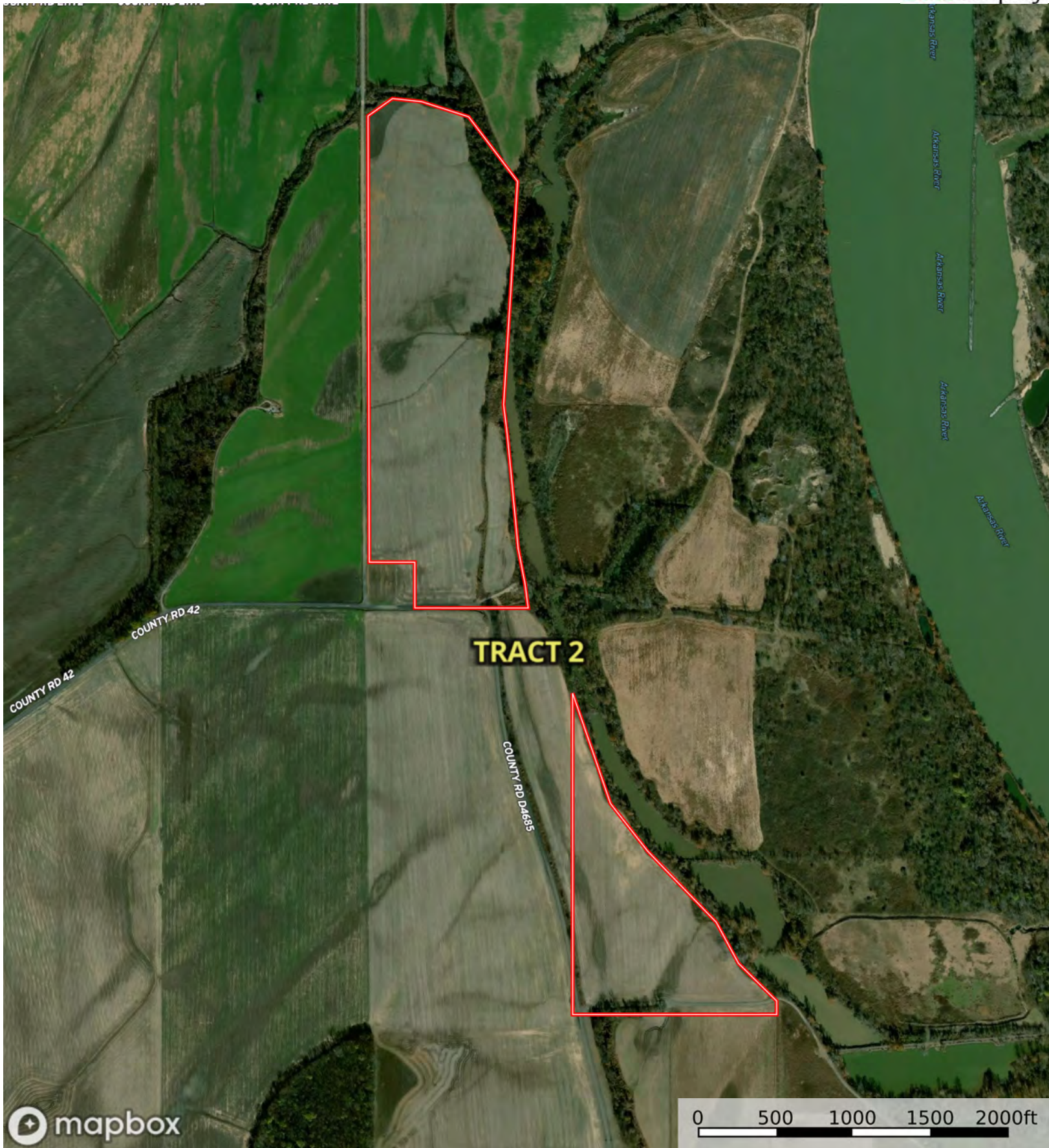
Boundary



The information contained herein was obtained from sources deemed to be reliable. Land id™ Services makes no warranties or guarantees as to the completeness or accuracy thereof.

L-2400544

Le Flore County, Oklahoma, 713.39 AC +/-



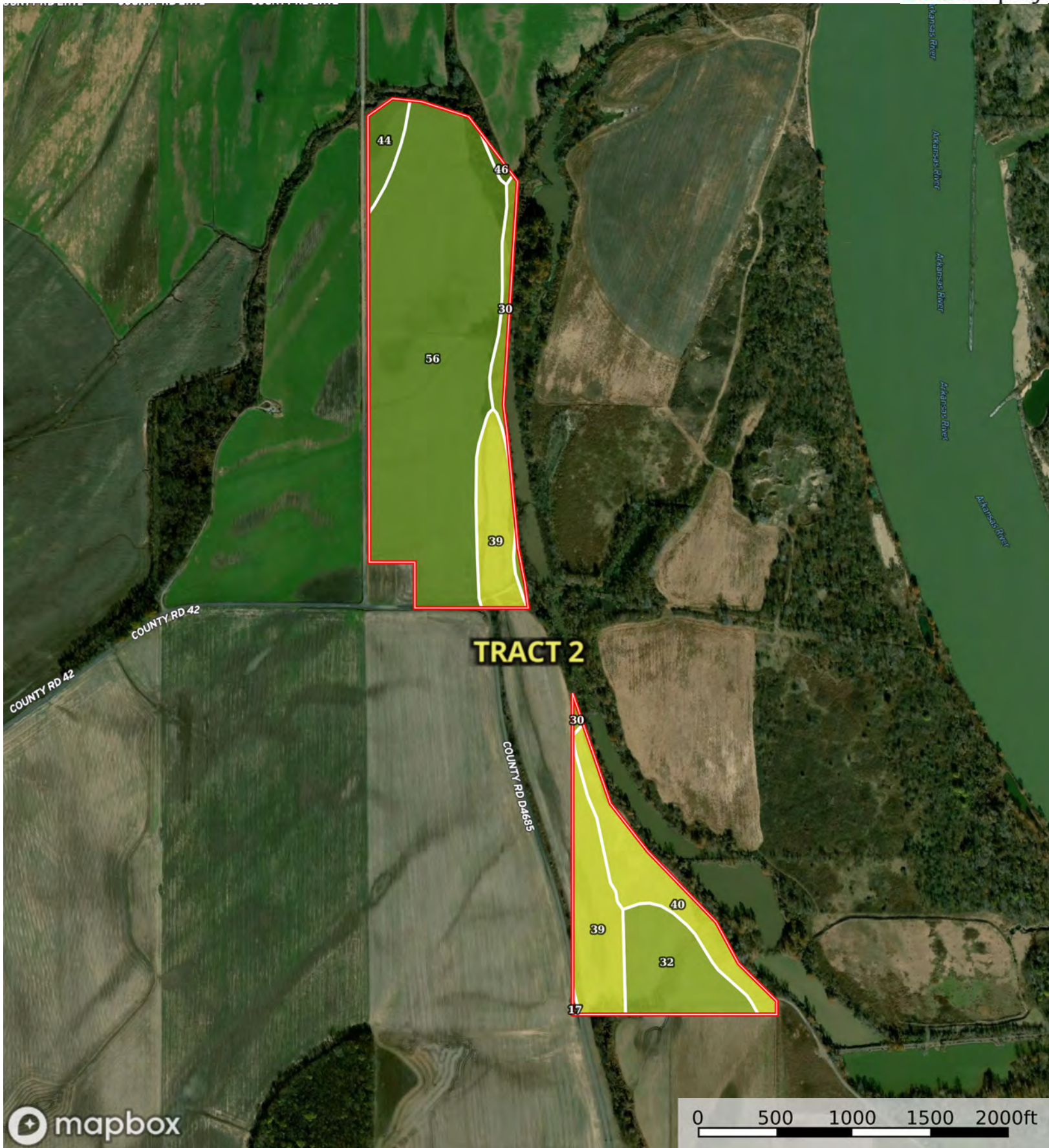
Boundary



The information contained herein was obtained from sources deemed to be reliable. Land ID™ Services makes no warranties or guarantees as to the completeness or accuracy thereof.

L-2400544

Le Flore County, Oklahoma, 713.39 AC +/-



Boundary



The information contained herein was obtained from sources deemed to be reliable. Land id™ Services makes no warranties or guarantees as to the completeness or accuracy thereof.

|  All Polygons 93.89 ac

SOIL CODE	SOIL DESCRIPTION	ACRES	%	CPI	NCCPI	CAP
56	Redport silty clay loam, 0 to 1 percent slopes, rarely flooded	53.59	57.08	0	87	2e
39	Moreland silty clay, 0 to 1 percent slopes, rarely flooded	15.5	16.51	0	56	4w
32	Latanier silty clay, 0 to 1 percent slopes, rarely flooded	9.46	10.08	0	72	3w
40	Moreland silty clay loam, 0 to 1 percent slopes, rarely flooded	8.91	9.49	0	63	4w
30	Kiomatia fine sandy loam, 1 to 3 percent slopes, rarely flooded	3.21	3.42	0	60	3s
44	Norwood silty clay loam, 0 to 1 percent slopes, rarely flooded	2.73	2.91	0	85	2s
46	Norwood loam, 0 to 1 percent slopes, rarely flooded	0.39	0.42	0	84	2s
17	Coushatta silt loam, 0 to 1 percent slopes, rarely flooded	0.1	0.11	0	90	1
TOTALS		93.89(*)	100%	-	77.11	2.65

(*) Total acres may differ in the second decimal compared to the sum of each acreage soil. This is due to a round error because we only show the acres of each soil with two decimal.

| Boundary 66.16 ac

SOIL CODE	SOIL DESCRIPTION	ACRES	%	CPI	NCCPI	CAP
56	Redport silty clay loam, 0 to 1 percent slopes, rarely flooded	53.59	81.0	0	87	2e
39	Moreland silty clay, 0 to 1 percent slopes, rarely flooded	6.46	9.76	0	56	4w
30	Kiomatia fine sandy loam, 1 to 3 percent slopes, rarely flooded	2.99	4.52	0	60	3s
44	Norwood silty clay loam, 0 to 1 percent slopes, rarely flooded	2.73	4.13	0	85	2s
46	Norwood loam, 0 to 1 percent slopes, rarely flooded	0.39	0.59	0	84	2s
TOTALS		66.16(*)	100%	-	82.65	2.24

(*) Total acres may differ in the second decimal compared to the sum of each acreage soil. This is due to a round error because we only show the acres of each soil with two decimal.

| Boundary 27.73 ac

SOIL CODE	SOIL DESCRIPTION	ACRES	%	CPI	NCCPI	CAP
32	Latanier silty clay, 0 to 1 percent slopes, rarely flooded	9.46	34.13	0	72	3w
39	Moreland silty clay, 0 to 1 percent slopes, rarely flooded	9.04	32.61	0	56	4w
40	Moreland silty clay loam, 0 to 1 percent slopes, rarely flooded	8.91	32.14	0	63	4w
30	Kiomatia fine sandy loam, 1 to 3 percent slopes, rarely flooded	0.22	0.79	0	60	3s
17	Coushatta silt loam, 0 to 1 percent slopes, rarely flooded	0.1	0.36	0	90	1
TOTALS		27.73(*)	100%	-	63.88	3.64









(*) Total acres may differ in the second decimal compared to the sum of each acreage soil. This is due to a round error because we only show the acres of each soil with two decimal.

Capability Legend

Increased Limitations and Hazards

Decreased Adaptability and Freedom of Choice Users

Land, Capability

								
	1	2	3	4	5	6	7	8
'Wild Life'	•	•	•	•	•	•	•	•
Forestry	•	•	•	•	•	•	•	
Limited	•	•	•	•	•	•	•	
Moderate	•	•	•	•	•	•		
Intense	•	•	•	•	•			
Limited	•	•	•	•				
Moderate	•	•	•					
Intense	•	•						
Very Intense	•							

Grazing Cultivation

(c) climatic limitations (e) susceptibility to erosion

(s) soil limitations within the rooting zone (w) excess of water

L-2400544

Le Flore County, Oklahoma, 713.39 AC +/-



Boundary



The information contained herein was obtained from sources deemed to be reliable. Land ID™ Services makes no warranties or guarantees as to the completeness or accuracy thereof.

L-2400544

Le Flore County, Oklahoma, 713.39 AC +/-



Boundary



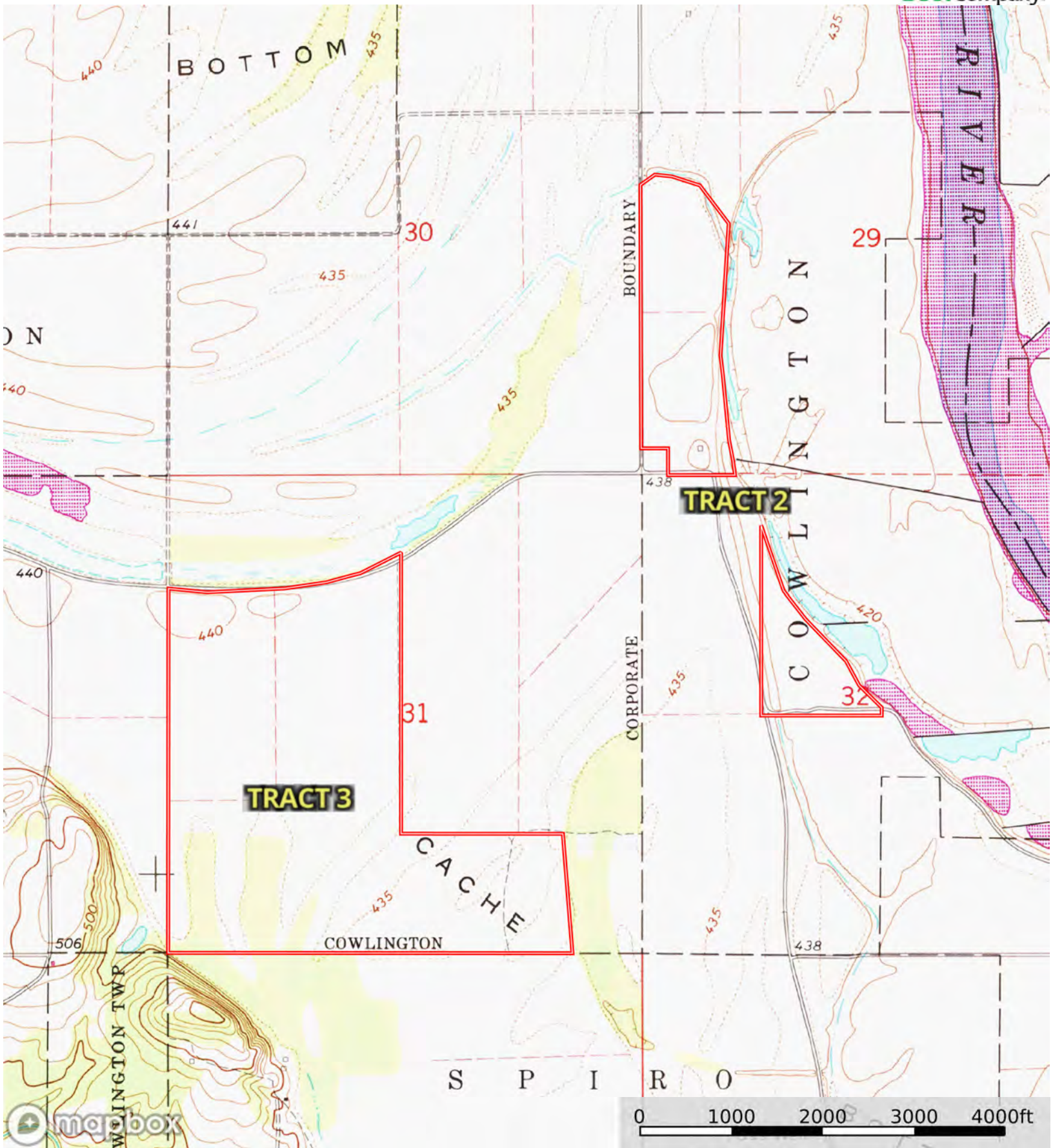
The information contained herein was obtained from sources deemed to be reliable. Land id™ Services makes no warranties or guarantees as to the completeness or accuracy thereof.

| Boundary 294.26 ac

SOIL CODE	SOIL DESCRIPTION	ACRES	%	CPI	NCCPI	CAP
25	Garton silty clay loam, 0 to 1 percent slopes, rarely flooded	114.26	38.83	0	67	2w
19	Coushatta silty clay loam, 1 to 3 percent slopes, rarely flooded	70.35	23.91	0	90	2e
56	Redport silty clay loam, 0 to 1 percent slopes, rarely flooded	65.76	22.35	0	87	2e
39	Moreland silty clay, 0 to 1 percent slopes, rarely flooded	38.28	13.01	0	56	4w
36	Lynnville variant silty clay, 0 to 1 percent slopes, occasionally flooded	5.44	1.85	0	61	4w
2	Bengal-Clebit association, 3 to 15 percent	0.17	0.06	0	48	6e
TOTALS		294.26(*)	100%	-	75.42	2.3

(*) Total acres may differ in the second decimal compared to the sum of each acreage soil. This is due to a round error because we only show the acres of each soil with two decimal.





Boundary



L-2400544

Le Flore County, Oklahoma, 713.39 AC +/-



TRACT 4

COUNTY RD N4690

COUNTY RD N4690

COUNTY RD N4690

COUNTY RD N4690

COUNTY RD N4690

RD E1200

COUNTY RD E1200

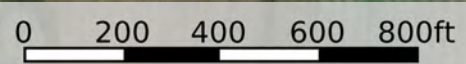
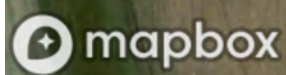
COUNTY RD E1200

COUNTY RD E1200

COUNTY RD E1200

COUNTY RD E1200

COUNTY RD E1200



Boundary



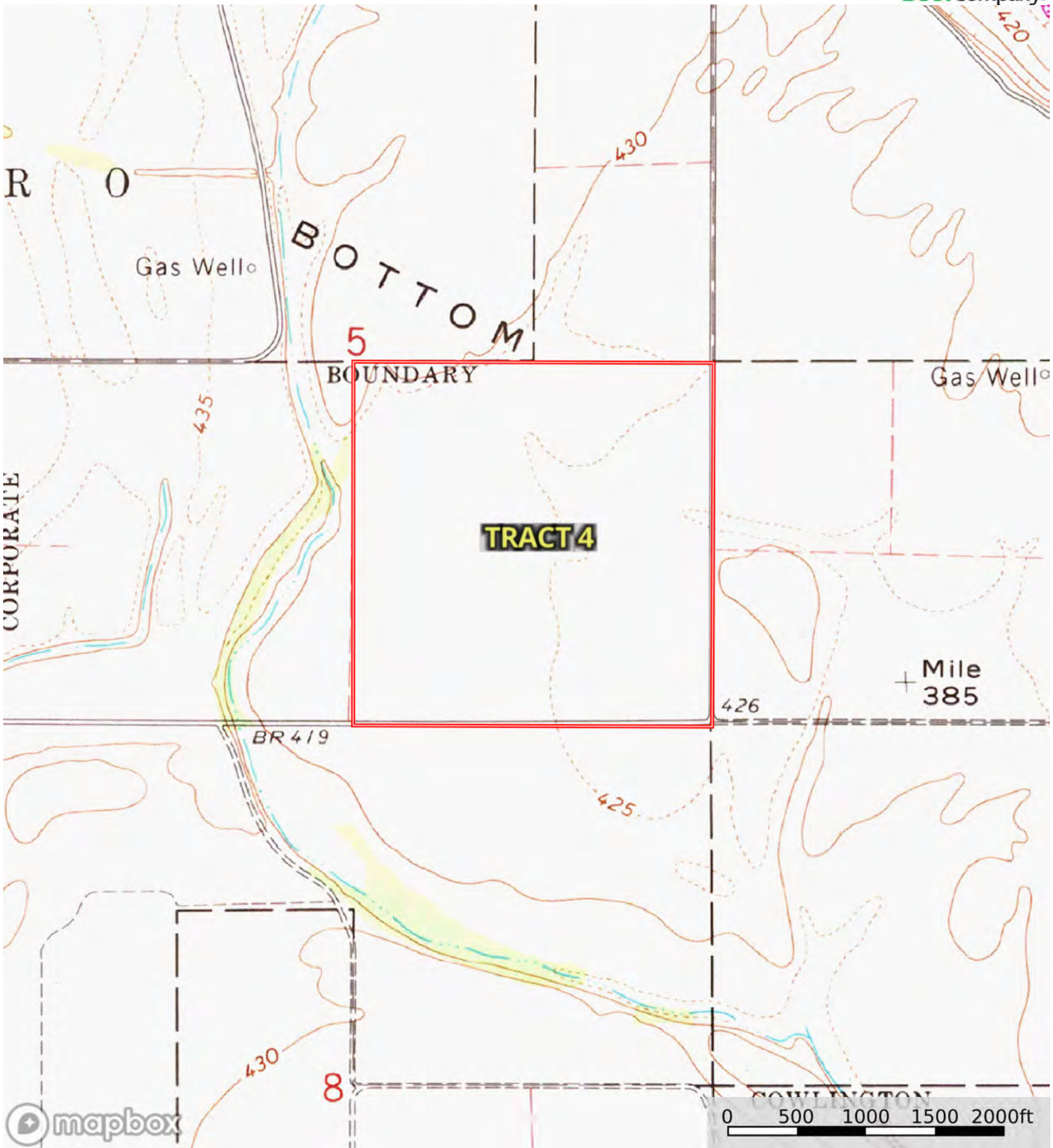
Boundary

| Boundary 158.18 ac

SOIL CODE	SOIL DESCRIPTION	ACRES	%	CPI	NCCPI	CAP
19	Coushatta silty clay loam, 1 to 3 percent slopes, rarely flooded	57.08	36.09	0	90	2e
31	Kiomatia silty clay loam, 1 to 3 percent slopes, rarely flooded	39.71	25.1	0	71	2e
63	Severn very fine sandy loam, 0 to 1 percent slopes, rarely flooded	24.87	15.72	0	86	2e
44	Norwood silty clay loam, 0 to 1 percent slopes, rarely flooded	22.47	14.21	0	85	2s
36	Lynnville variant silty clay, 0 to 1 percent slopes, occasionally flooded	14.01	8.86	0	61	4w
46	Norwood loam, 0 to 1 percent slopes, rarely flooded	0.04	0.03	0	84	2s
TOTALS		158.18(*)	100%	-	81.32	2.18

(*) Total acres may differ in the second decimal compared to the sum of each acreage soil. This is due to a round error because we only show the acres of each soil with two decimal.





Boundary

