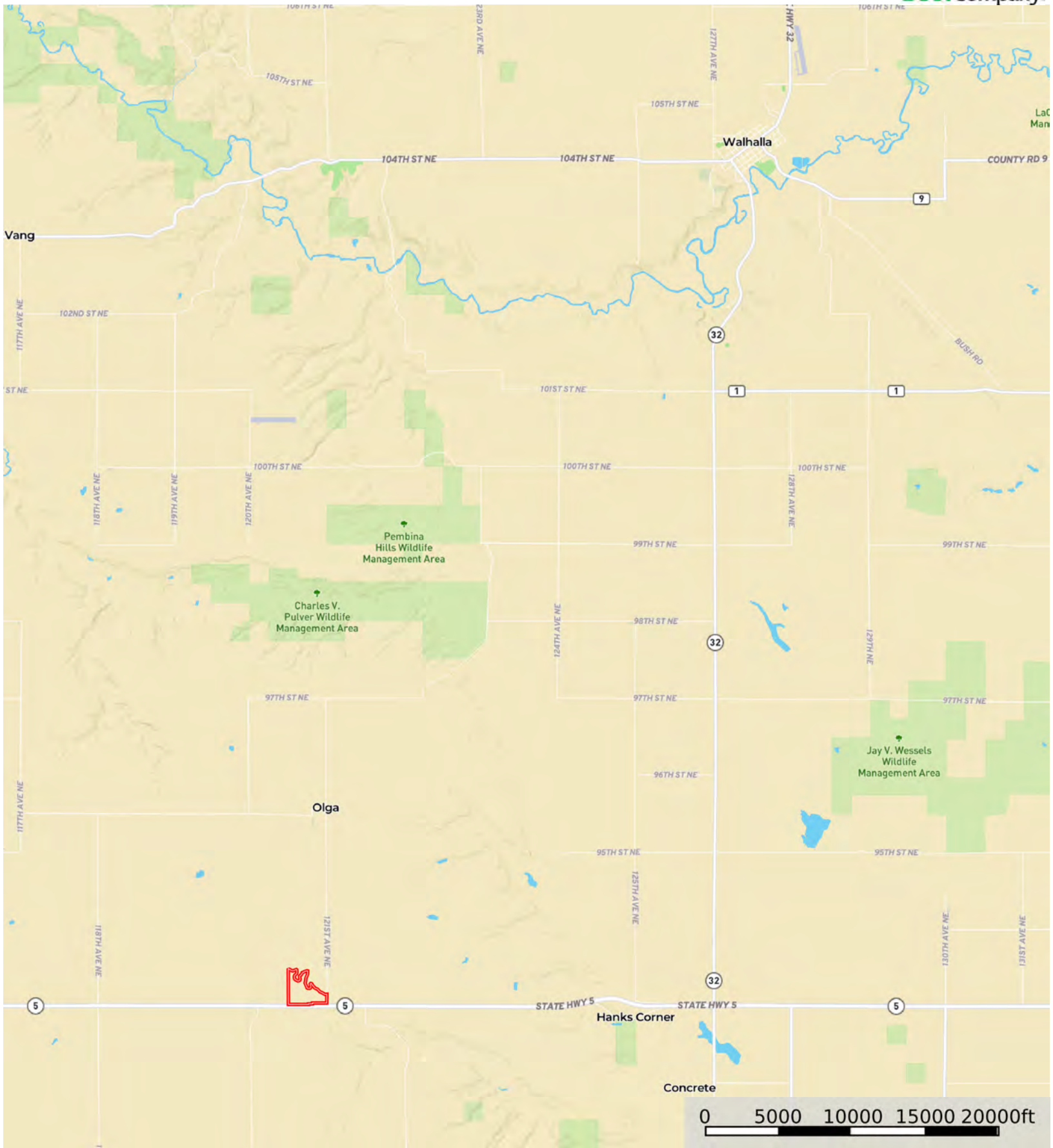


L-2400554

Cavalier County, North Dakota, 90.92 AC +/-



Boundary



The information contained herein was obtained from sources deemed to be reliable. Land id™ Services makes no warranties or guarantees as to the completeness or accuracy thereof.

L-2400554

Cavalier County, North Dakota, 90.92 AC +/-



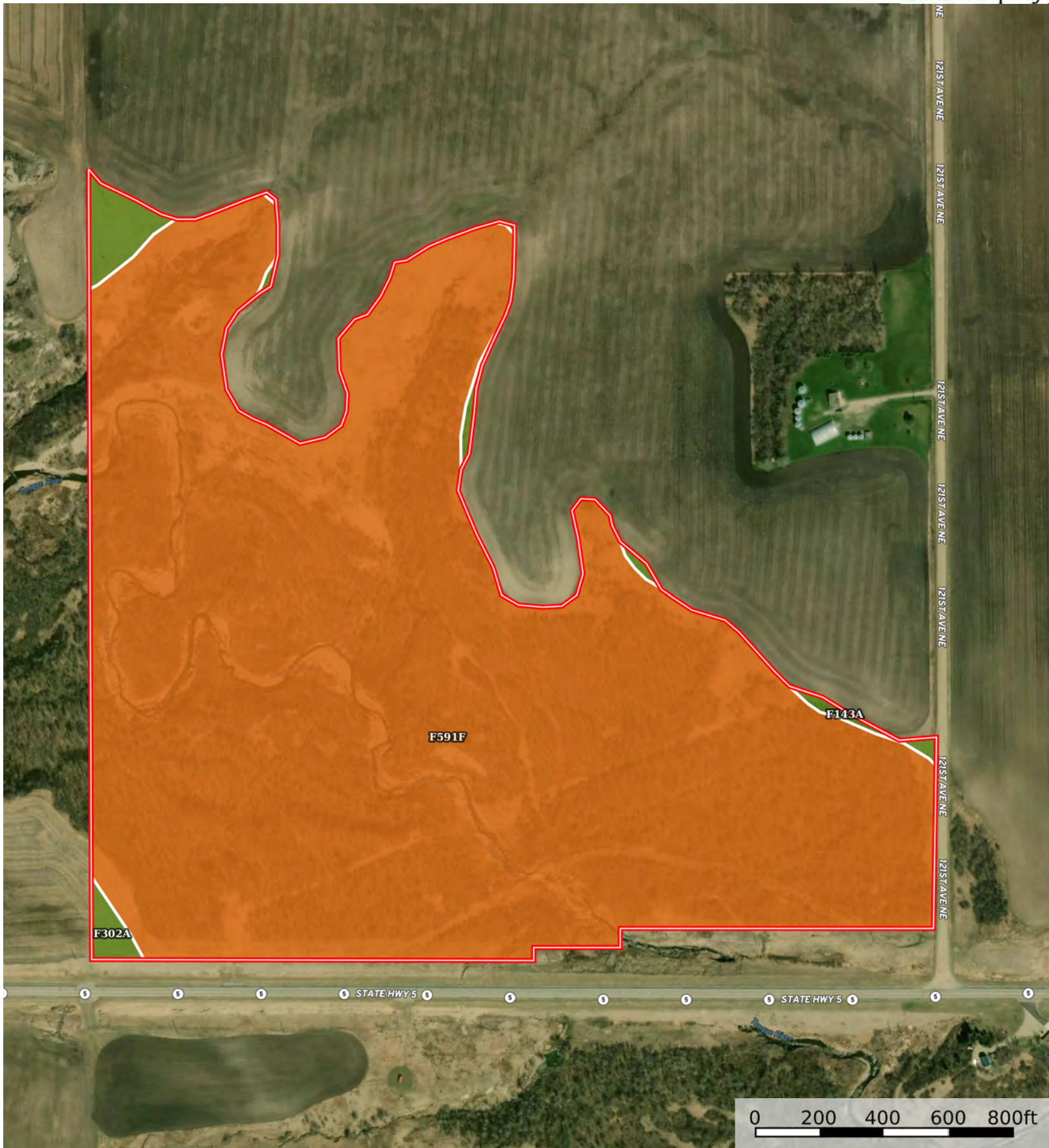
Boundary



The information contained herein was obtained from sources deemed to be reliable. Land id™ Services makes no warranties or guarantees as to the completeness or accuracy thereof.

L-2400554

Cavalier County, North Dakota, 90.92 AC +/-



Boundary



The information contained herein was obtained from sources deemed to be reliable. Land id™ Services makes no warranties or guarantees as to the completeness or accuracy thereof.

| Boundary 90.1 ac

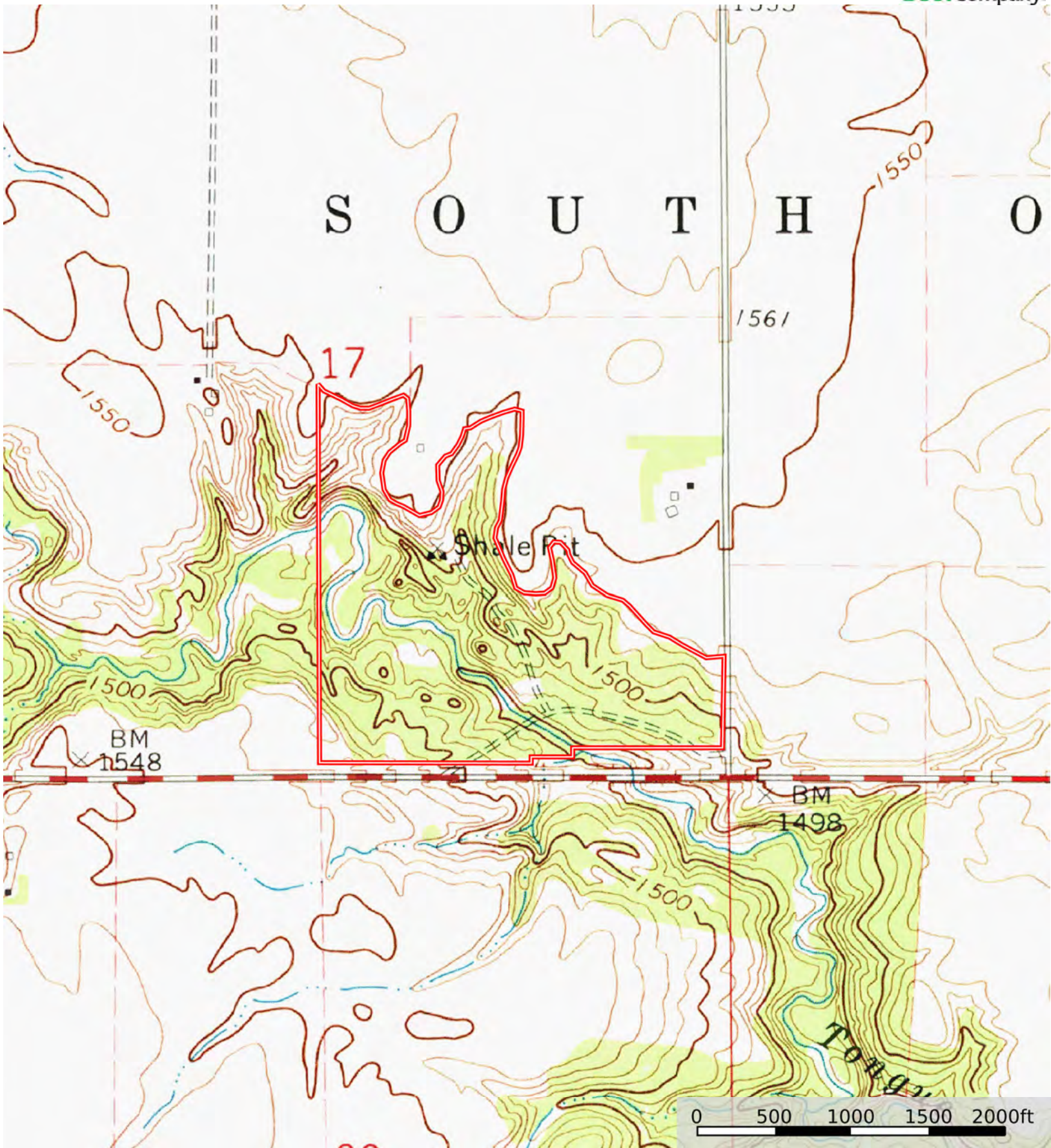
SOIL CODE	SOIL DESCRIPTION	ACRES	%	CPI	NCCPI	CAP
F591F	Olga-Kloten complex, 9 to 75 percent slopes	87.79	97.45	13	10	7e
F143A	Barnes-Svea loams, 0 to 3 percent slopes	1.8	2.0	86	60	2c
F302A	Vang loam, 0 to 2 percent slopes	0.51	0.57	64	48	2s
TOTALS		90.1(*)	100%	14.75	11.22	6.87

(*) Total acres may differ in the second decimal compared to the sum of each acreage soil. This is due to a round error because we only show the acres of each soil with two decimal.



L-2400554

Cavalier County, North Dakota, 90.92 AC +/-



Boundary



The information contained herein was obtained from sources deemed to be reliable. Land id™ Services makes no warranties or guarantees as to the completeness or accuracy thereof.