


Boundary



L-2400560


Iroquois County, Illinois, 80.27 AC +/-



 Boundary





 Boundary

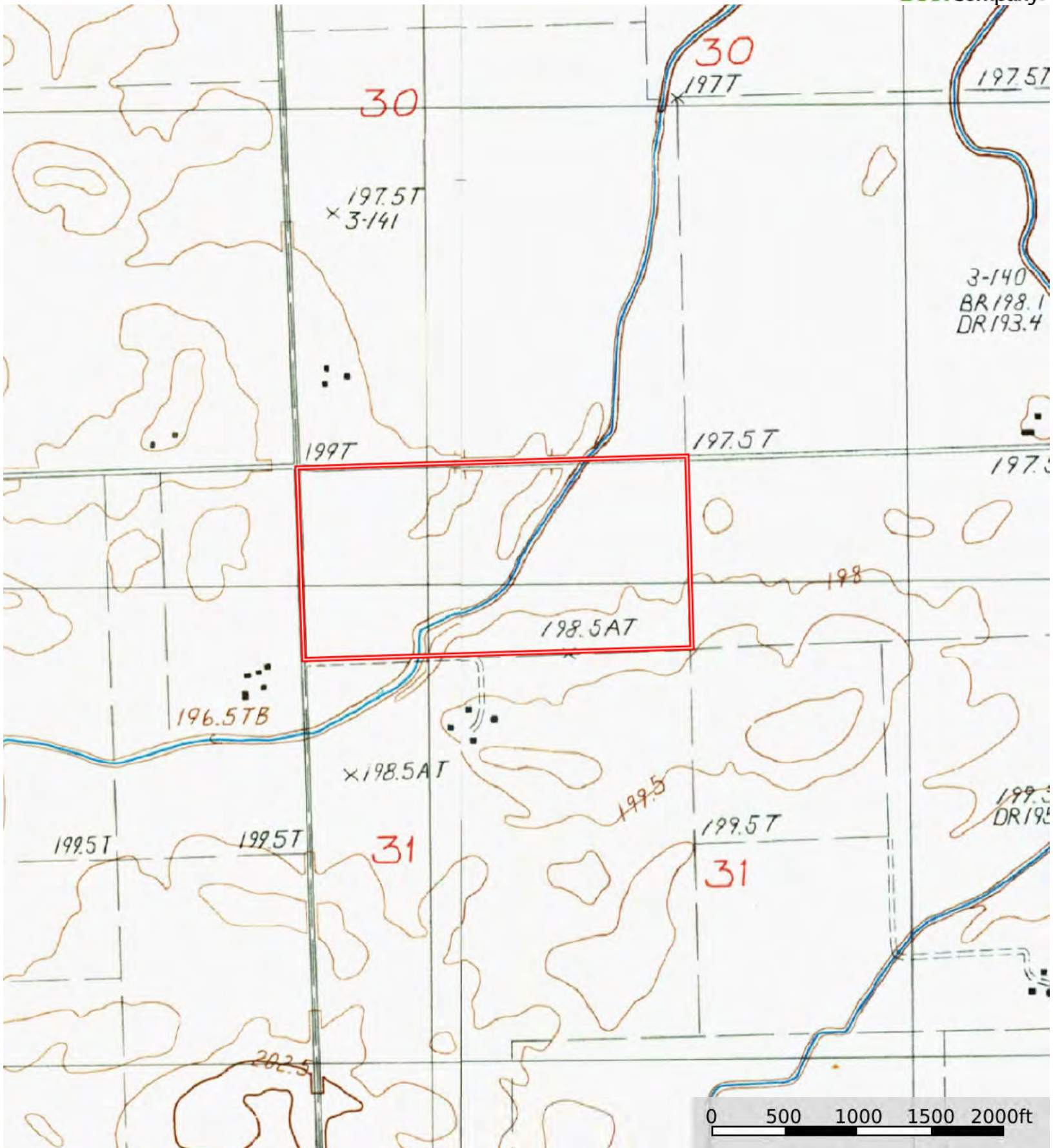
| Boundary 80.98 ac

SOIL CODE	SOIL DESCRIPTION	ACRES	%	PI	NCCPI	CAP
69A	Milford silty clay loam, 0 to 2 percent slopes	64.68	79.88	128	67	2w
189A	Martinton silt loam, 0 to 2 percent slopes	12.56	15.51	130	86	1
235A	Bryce silty clay, 0 to 2 percent slopes	3.74	4.62	121	56	3w
TOTALS		80.98(*)	100%	128.0	69.45	1.89

(\*) Total acres may differ in the second decimal compared to the sum of each acreage soil. This is due to a round error because we only show the acres of each soil with two decimal.







Boundary