

Boundary







| Boundary 77.3 ac

SOIL CODE	SOIL DESCRIPTION	ACRES	%	CSR2	CPI	NCCPI	CAP
10D2	Monona silt loam, 9 to 14 percent slopes, eroded	17.41	22.52	60.0	0	78	3e
12B	Napier silt loam, 2 to 5 percent slopes	17.4	22.51	93.0	0	89	2e
9B	Marshall silty clay loam, 2 to 5 percent slopes	17.18	22.22	95.0	0	89	2e
99D2	Exira silty clay loam, 9 to 14 percent slopes, eroded	9.01	11.65	59.0	0	84	3e
9D2	Marshall silty clay loam, 9 to 14 percent slopes, eroded	6.05	7.83	61.0	0	86	3e
8B	Judson silty clay loam, deep loess, 2 to 5 percent slopes	3.87	5.01	92.0	0	96	2e
22D3	Dow silt loam, 9 to 14 percent slopes, severely eroded	3.56	4.6	26.0	0	59	3e
1D3	Ida silt loam, 9 to 14 percent slopes, severely eroded	1.95	2.52	32.0	0	59	3e
10C	Monona silt loam, 5 to 9 percent slopes	0.71	0.92	89.0	0	87	3e
10B	Monona silt loam, 2 to 5 percent slopes	0.16	0.21	95.0	0	88	2e
TOTALS		77.3(*)	100%	74.83	-	83.89	2.5









(*) Total acres may differ in the second decimal compared to the sum of each acreage soil. This is due to a round error because we only show the acres of each soil with two decimal.

Capability Legend

Increased Limitations and Hazards

Decreased Adaptability and Freedom of Choice Users

Land, Capability

								
	1	2	3	4	5	6	7	8
'Wild Life'	•	•	•	•	•	•	•	•
Forestry	•	•	•	•	•	•	•	
Limited	•	•	•	•	•	•	•	
Moderate	•	•	•	•	•	•		
Intense	•	•	•	•	•			
Limited	•	•	•	•				
Moderate	•	•	•					
Intense	•	•						
Very Intense	•							

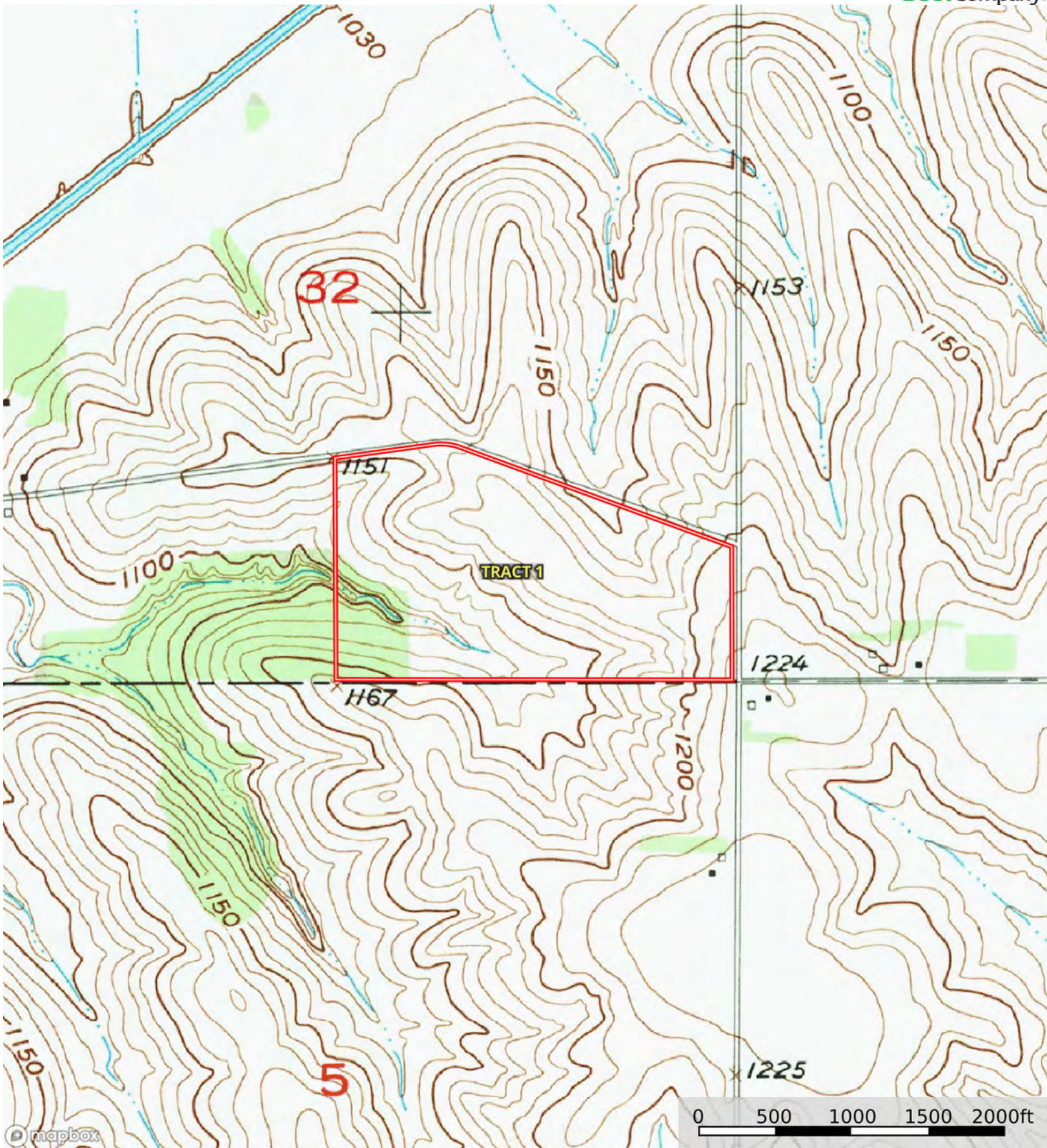
Grazing Cultivation

(c) climatic limitations (e) susceptibility to erosion

(s) soil limitations within the rooting zone (w) excess of water

L-2400572

Pottawattamie County, Mills County, Iowa, 238.02 AC +/-



Boundary



The information contained herein was obtained from sources deemed to be reliable. Land id™ Services makes no warranties or guarantees as to the completeness or accuracy thereof.

L-2400572

Pottawattamie County, Mills County, Iowa, 238.02 AC +/-



mapbox

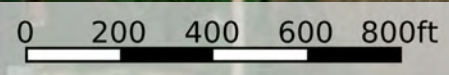
Boundary

L-2400572

Pottawattamie County, Mills County, Iowa, 238.02 AC +/-



mapbox



Boundary

| Boundary 119.65 ac

SOIL CODE	SOIL DESCRIPTION	ACRES	%	CSR2	CPI	NCCPI	CAP
8B	Judson silty clay loam, deep loess, 2 to 5 percent slopes	42.45	35.48	92.0	0	96	2e
99D2	Exira silty clay loam, 9 to 14 percent slopes, eroded	34.34	28.7	59.0	0	84	3e
212	Kennebec silt loam, 0 to 2 percent slopes, occasionally flooded	22.82	19.07	91.0	0	96	1
9C	Marshall silty clay loam, 5 to 9 percent slopes	13.86	11.58	89.0	0	96	3e
60D2	Malvern silty clay loam, 9 to 14 percent slopes, moderately eroded	3.46	2.89	5.0	0	88	4e
Z1820	Dockery-Quiver silt loams, deep loess, 0 to 2 percent slopes, occasionally flooded	1.82	1.52	87.0	0	94	2w
99C2	Exira silty clay loam, 5 to 9 percent slopes, eroded	0.51	0.43	87.0	0	84	3e
9B	Marshall silty clay loam, 2 to 5 percent slopes	0.39	0.33	95.0	0	89	2e
TOTALS		119.65(*)	100%	79.39	-	92.23	2.27

(*) Total acres may differ in the second decimal compared to the sum of each acreage soil. This is due to a round error because we only show the acres of each soil with two decimal.





mapbox

Boundary





Boundary

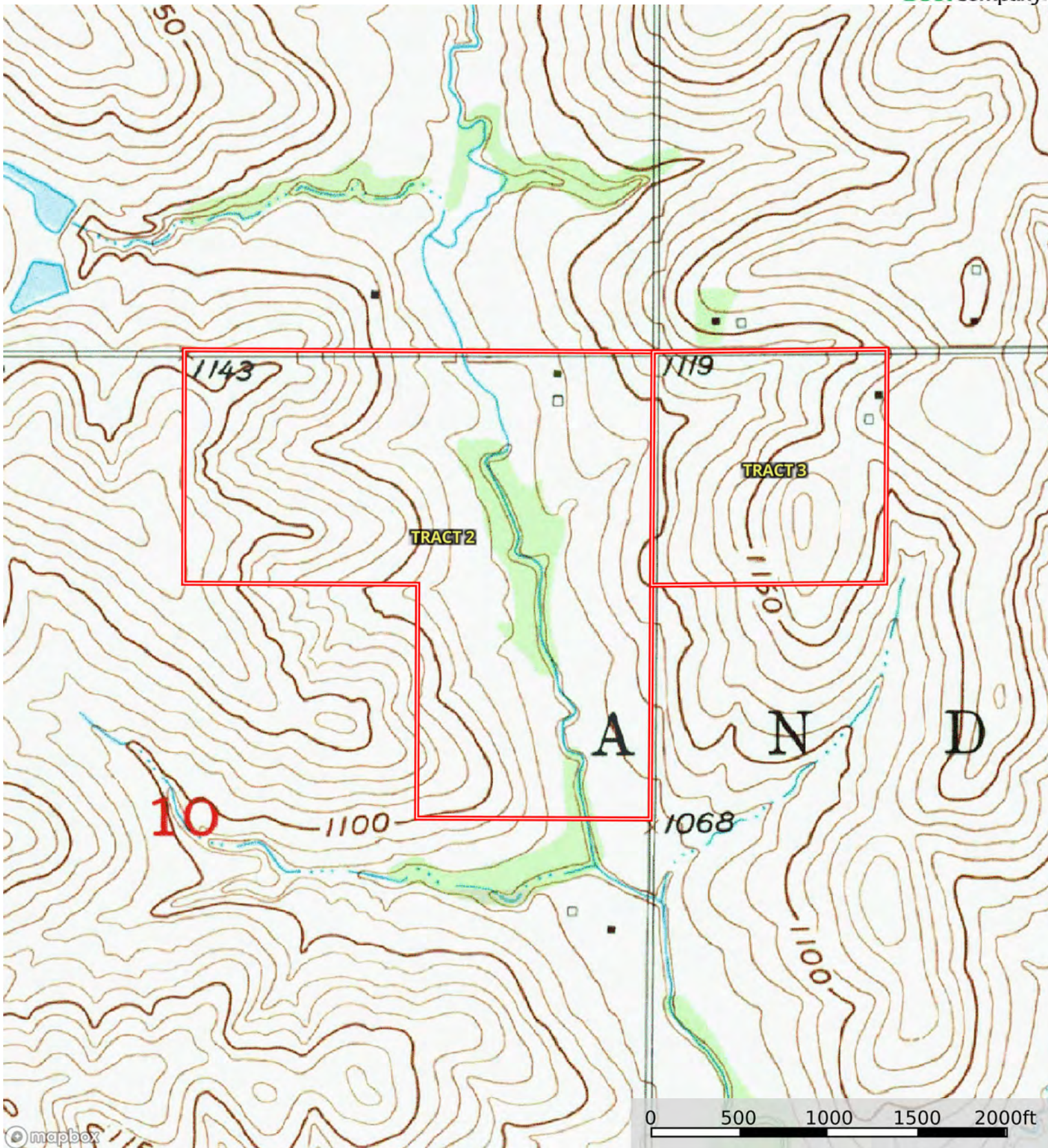


| Boundary 39.89 ac

SOIL CODE	SOIL DESCRIPTION	ACRES	%	CSR2	CPI	NCCPI	CAP
99D2	Exira silty clay loam, 9 to 14 percent slopes, eroded	22.69	56.88	59.0	0	84	3e
99C	Exira silty clay loam, 5 to 9 percent slopes	9.47	23.74	90.0	0	93	3e
8B	Judson silty clay loam, deep loess, 2 to 5 percent slopes	5.57	13.96	92.0	0	96	2e
99C2	Exira silty clay loam, 5 to 9 percent slopes, eroded	1.7	4.26	87.0	0	84	3e
9B	Marshall silty clay loam, 2 to 5 percent slopes	0.46	1.15	95.0	0	89	2e
TOTALS		39.89(*)	100%	72.58	-	87.87	2.85

(*) Total acres may differ in the second decimal compared to the sum of each acreage soil. This is due to a round error because we only show the acres of each soil with two decimal.





Boundary