



**Common Land Unit**  
  Tract Boundary  
  PLSS  
  Non-Cropland  
  Cropland

**Wetland Determination Identifiers**  
● Restricted Use  
▼ Limited Restrictions  
■ Exempt from Conservation  
■ Compliance Provisions

Unless otherwise noted, crops listed below are:  
 Non-irrigated Intended for Grain  
 Corn = Yellow  
 Soybeans = Common  
 Wheat - HRS or HRW  
 Sunflowers = Oil or Non

Producer initial \_\_\_\_\_  
 Date \_\_\_\_\_

2024 Program Year  
 Map Created April 29, 2024

Farm **4464**

**1-22N-11E-Perkins**

United States Department of Agriculture (USDA) Farm Service Agency (FSA) maps are for FSA Program administration only. This map does not represent a legal survey or reflect actual ownership; rather it depicts the information provided directly from the producer and/or National Agricultural Imagery Program (NAIP) imagery. The producer accepts the data 'as is' and assumes all risks associated with its use. USDA-FSA assumes no responsibility for actual or consequential damage incurred as a result of any user's reliance on this data outside FSA Programs. Wetland identifiers do not represent the size, shape, or specific determination of the area. Refer to your original determination (CPA-026 and attached maps) for exact boundaries and determinations or contact USDA Natural Resources Conservation Service (NRCS).





**Common Land Unit**  PLSS

- Non-Cropland
- Tract Boundary

**Wetland Determination Identifiers**

- Restricted Use
- ▼ Limited Restrictions
- Exempt from Conservation Compliance Provisions

Unless otherwise noted, crops listed below are:  
**Non-irrigated Intended for Grain**      Producer initial \_\_\_\_\_  
 Corn = Yellow                                      Date \_\_\_\_\_  
 Soybeans = Common  
 Wheat - HRS or HRW  
 Sunflowers = Oil or Non

**2024 Program Year**

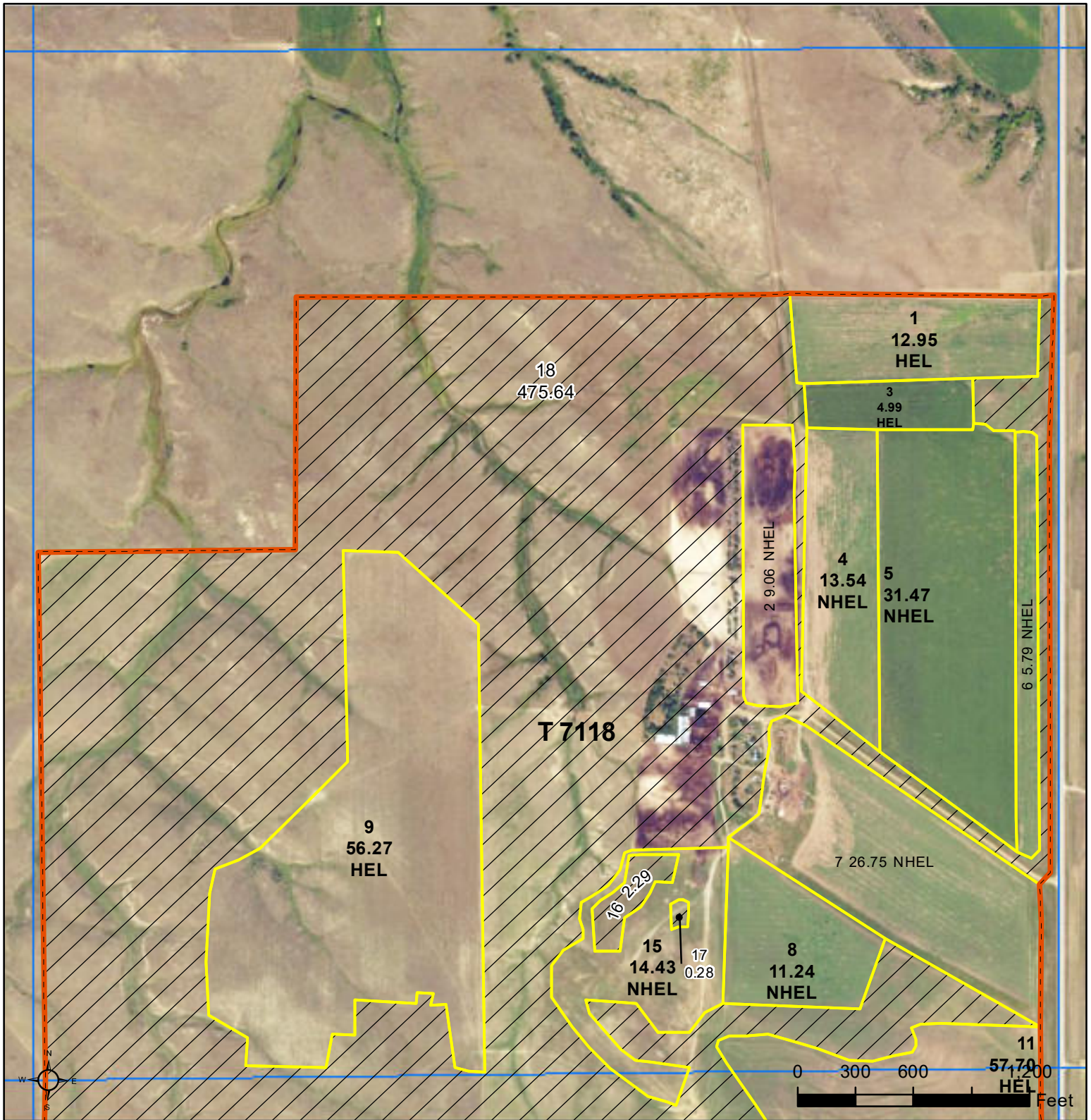
Map Created April 29, 2024

**Farm 4464**

**12-22N-11E-Perkins**

United States Department of Agriculture (USDA) Farm Service Agency (FSA) maps are for FSA Program administration only. This map does not represent a legal survey or reflect actual ownership; rather it depicts the information provided directly from the producer and/or National Agricultural Imagery Program (NAIP) imagery. The producer accepts the data 'as is' and assumes all risks associated with its use. USDA-FSA assumes no responsibility for actual or consequential damage incurred as a result of any user's reliance on this data outside FSA Programs. Wetland identifiers do not represent the size, shape, or specific determination of the area. Refer to your original determination (CPA-026 and attached maps) for exact boundaries and determinations or contact USDA Natural Resources Conservation Service (NRCS).





**Common Land Unit**  
 Non-Cropland  
 Cropland  
 Tract Boundary  
 PLSS

**Wetland Determination Identifiers**  
 Restricted Use  
 Limited Restrictions  
 Exempt from Conservation  
 Compliance Provisions

Unless otherwise noted, crops listed below are:  
 Non-irrigated Intended for Grain  
 Corn = Yellow  
 Soybeans = Common  
 Wheat - HRS or HRW  
 Sunflowers = Oil or Non

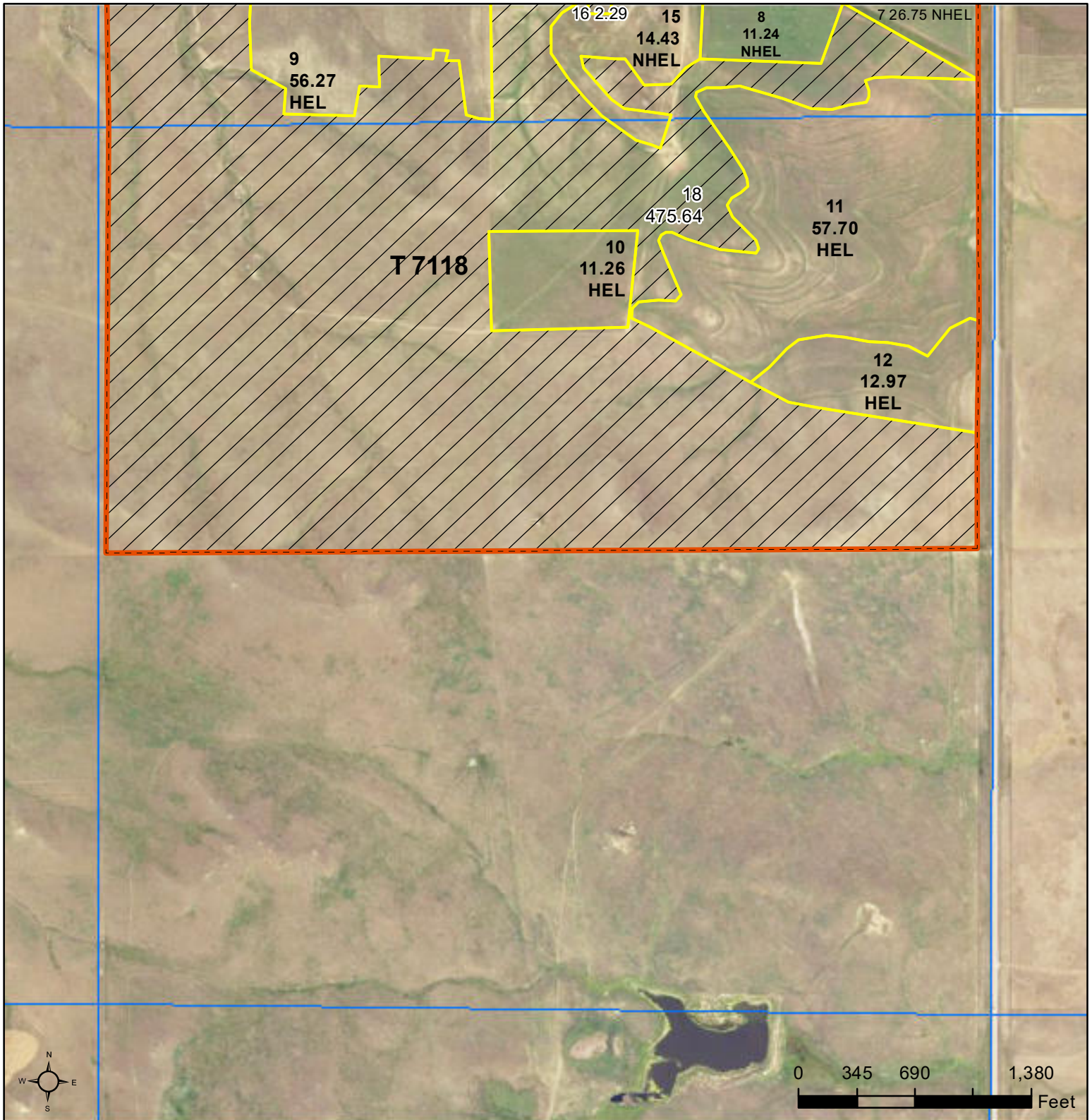
Producer initial \_\_\_\_\_  
 Date \_\_\_\_\_

2024 Program Year  
 Map Created April 29, 2024  
 Farm 4464

17-22N-12E-Perkins

United States Department of Agriculture (USDA) Farm Service Agency (FSA) maps are for FSA Program administration only. This map does not represent a legal survey or reflect actual ownership; rather it depicts the information provided directly from the producer and/or National Agricultural Imagery Program (NAIP) imagery. The producer accepts the data 'as is' and assumes all risks associated with its use. USDA-FSA assumes no responsibility for actual or consequential damage incurred as a result of any user's reliance on this data outside FSA Programs. Wetland identifiers do not represent the size, shape, or specific determination of the area. Refer to your original determination (CPA-026 and attached maps) for exact boundaries and determinations or contact USDA Natural Resources Conservation Service (NRCS).





**Common Land Unit**

- Non-Cropland
- Cropland
- Tract Boundary
- PLSS

**Wetland Determination Identifiers**

- Restricted Use
- Limited Restrictions
- Exempt from Conservation Compliance Provisions

Unless otherwise noted, crops listed below are:  
 Non-irrigated Intended for Grain  
 Corn = Yellow  
 Soybeans = Common  
 Wheat - HRS or HRW  
 Sunflowers = Oil or Non

Producer initial \_\_\_\_\_  
 Date \_\_\_\_\_

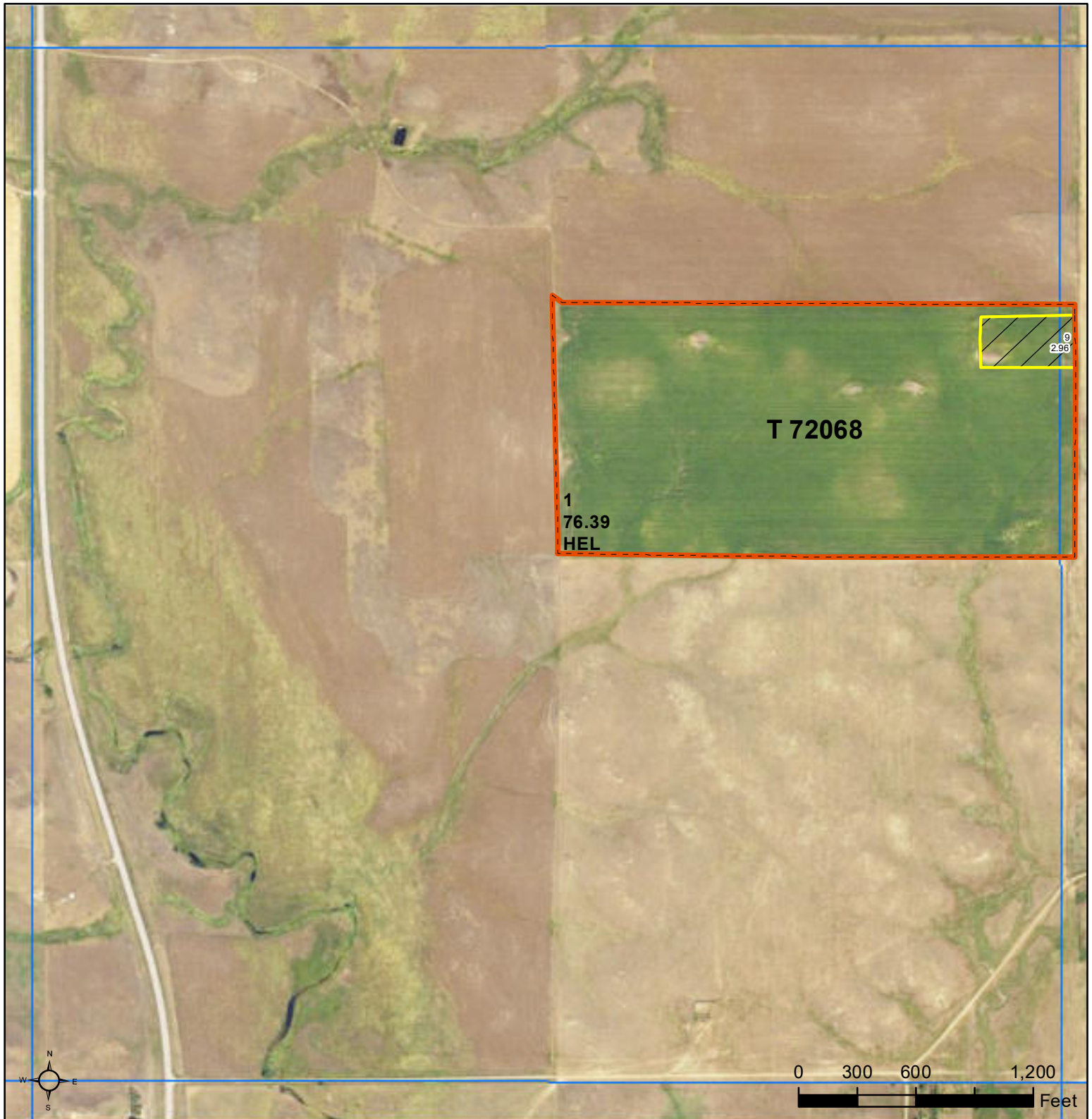
2024 Program Year

Map Created April 29, 2024

Farm 4464

20-22N-12E-Perkins

United States Department of Agriculture (USDA) Farm Service Agency (FSA) maps are for FSA Program administration only. This map does not represent a legal survey or reflect actual ownership; rather it depicts the information provided directly from the producer and/or National Agricultural Imagery Program (NAIP) imagery. The producer accepts the data 'as is' and assumes all risks associated with its use. USDA-FSA assumes no responsibility for actual or consequential damage incurred as a result of any user's reliance on this data outside FSA Programs. Wetland identifiers do not represent the size, shape, or specific determination of the area. Refer to your original determination (CPA-026 and attached maps) for exact boundaries and determinations or contact USDA Natural Resources Conservation Service (NRCS).



**Common Land Unit**   Tract Boundary  
  PLSS  
  Non-Cropland  
  Cropland

**Wetland Determination Identifiers**

- Restricted Use
- ▼ Limited Restrictions
- Exempt from Conservation
- Compliance Provisions

Unless otherwise noted, crops listed below are:  
 Non-irrigated Intended for Grain  
 Corn = Yellow  
 Soybeans = Common  
 Wheat - HRS or HRW  
 Sunflowers = Oil or Non

Producer initial \_\_\_\_\_  
 Date \_\_\_\_\_

2024 Program Year  
 Map Created April 29, 2024  
**Farm 4464**

**33-23N-12E-Perkins**

United States Department of Agriculture (USDA) Farm Service Agency (FSA) maps are for FSA Program administration only. This map does not represent a legal survey or reflect actual ownership; rather it depicts the information provided directly from the producer and/or National Agricultural Imagery Program (NAIP) imagery. The producer accepts the data 'as is' and assumes all risks associated with its use. USDA-FSA assumes no responsibility for actual or consequential damage incurred as a result of any user's reliance on this data outside FSA Programs. Wetland identifiers do not represent the size, shape, or specific determination of the area. Refer to your original determination (CPA-026 and attached maps) for exact boundaries and determinations or contact USDA Natural Resources Conservation Service (NRCS).





Common Land Unit PLSS

- Non-Cropland
- Tract Boundary

**Wetland Determination Identifiers**

- Restricted Use
- ▼ Limited Restrictions
- Exempt from Conservation
- Compliance Provisions

Unless otherwise noted, crops listed below are:  
 Non-irrigated Intended for Grain  
 Corn = Yellow  
 Soybeans = Common  
 Wheat - HRS or HRW  
 Sunflowers = Oil or Non

Producer initial \_\_\_\_\_  
 Date \_\_\_\_\_

2024 Program Year

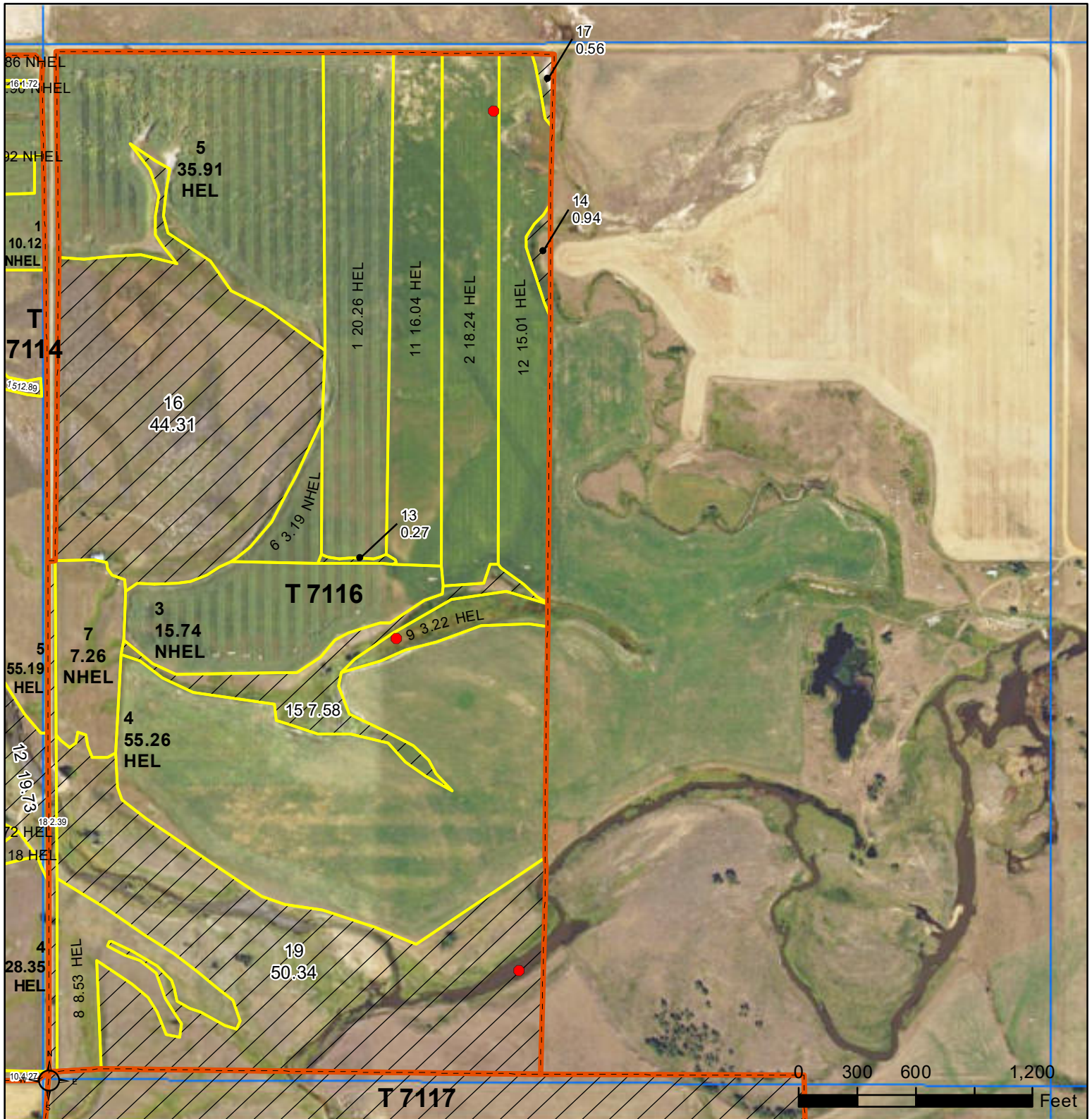
Map Created April 29, 2024

Farm **4464**

**36-23N-11E-Perkins**

United States Department of Agriculture (USDA) Farm Service Agency (FSA) maps are for FSA Program administration only. This map does not represent a legal survey or reflect actual ownership; rather it depicts the information provided directly from the producer and/or National Agricultural Imagery Program (NAIP) imagery. The producer accepts the data 'as is' and assumes all risks associated with its use. USDA-FSA assumes no responsibility for actual or consequential damage incurred as a result of any user's reliance on this data outside FSA Programs. Wetland identifiers do not represent the size, shape, or specific determination of the area. Refer to your original determination (CPA-026 and attached maps) for exact boundaries and determinations or contact USDA Natural Resources Conservation Service (NRCS).





**Common Land Unit**

- Tract Boundary
- PLSS
- Non-Cropland
- Cropland

**Wetland Determination Identifiers**

- Restricted Use
- ▼ Limited Restrictions
- Exempt from Conservation
- Compliance Provisions

Unless otherwise noted, crops listed below are:  
**Non-irrigated Intended for Grain**  
 Corn = Yellow  
 Soybeans = Common  
 Wheat - HRS or HRW  
 Sunflowers = Oil or Non

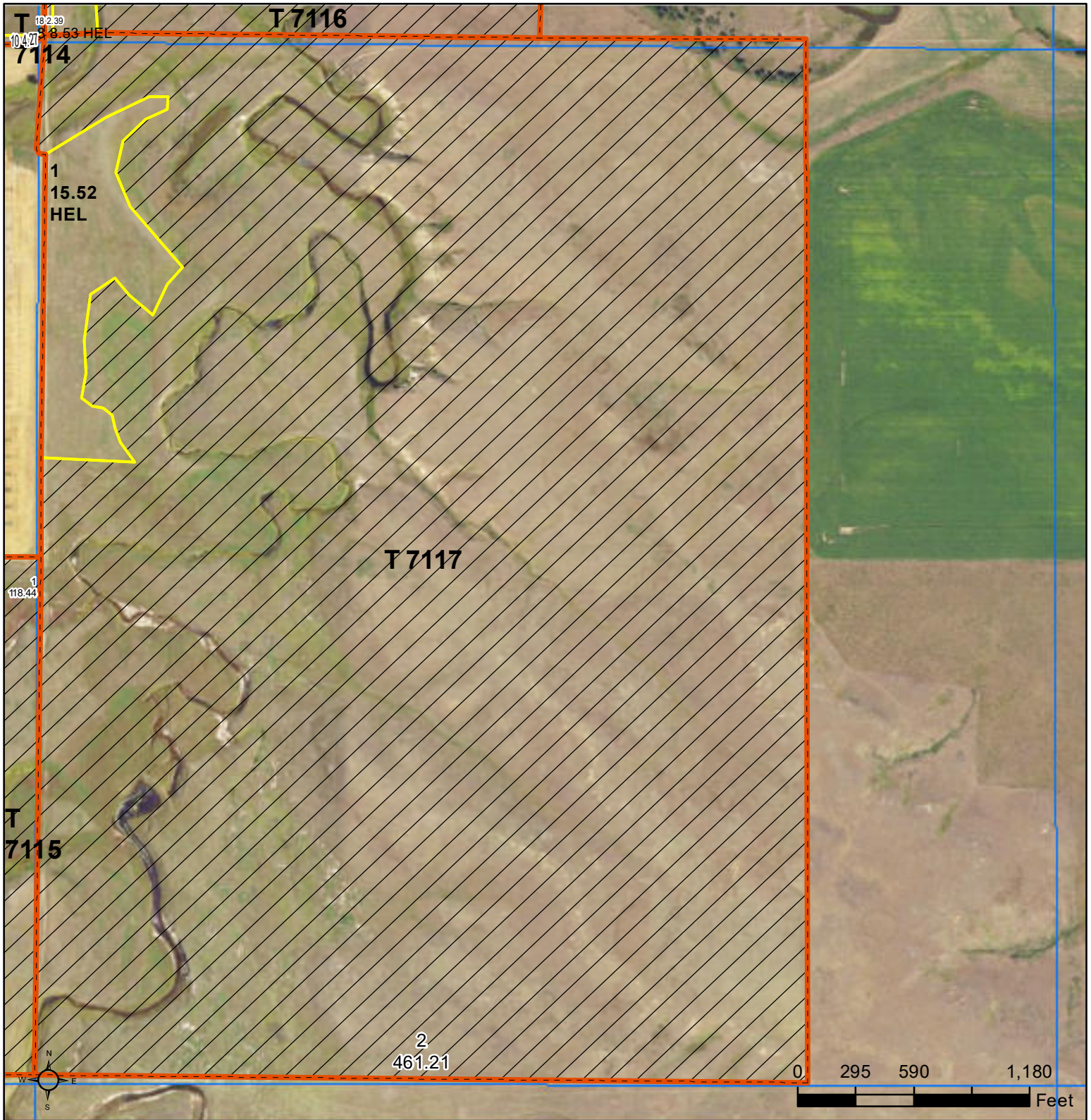
Producer initial \_\_\_\_\_  
 Date \_\_\_\_\_

**2024 Program Year**  
 Map Created April 29, 2024  
**Farm 4464**

**6-22N-12E-Perkins**





United States Department of Agriculture (USDA) Farm Service Agency (FSA) maps are for FSA Program administration only. This map does not represent a legal survey or reflect actual ownership; rather it depicts the information provided directly from the producer and/or National Agricultural Imagery Program (NAIP) imagery. The producer accepts the data 'as is' and assumes all risks associated with its use. USDA-FSA assumes no responsibility for actual or consequential damage incurred as a result of any user's reliance on this data outside FSA Programs. Wetland identifiers do not represent the size, shape, or specific determination of the area. Refer to your original determination (CPA-026 and attached maps) for exact boundaries and determinations or contact USDA Natural Resources Conservation Service (NRCS).





- Common Land Unit**
-  Non-Cropland
  -  Cropland
  -  Tract Boundary
  -  PLSS

**Wetland Determination Identifiers**

-  Restricted Use
-  Limited Restrictions
-  Exempt from Conservation
-  Compliance Provisions

Unless otherwise noted,  
crops listed below are:  
Non-irrigated Intended for Grain  
Corn = Yellow  
Soybeans = Common  
Wheat - HRS or HRW  
Sunflowers = Oil or Non

Producer initial \_\_\_\_\_  
Date \_\_\_\_\_

**2024 Program Year**

Map Created April 29, 2024

**Farm 4464**

**7-22N-12E-Perkins**

United States Department of Agriculture (USDA) Farm Service Agency (FSA) maps are for FSA Program administration only. This map does not represent a legal survey or reflect actual ownership; rather it depicts the information provided directly from the producer and/or National Agricultural Imagery Program (NAIP) imagery. The producer accepts the data 'as is' and assumes all risks associated with its use. USDA-FSA assumes no responsibility for actual or consequential damage incurred as a result of any user's reliance on this data outside FSA Programs. Wetland identifiers do not represent the size, shape, or specific determination of the area. Refer to your original determination (CPA-026 and attached maps) for exact boundaries and determinations or contact USDA Natural Resources Conservation Service (NRCS).