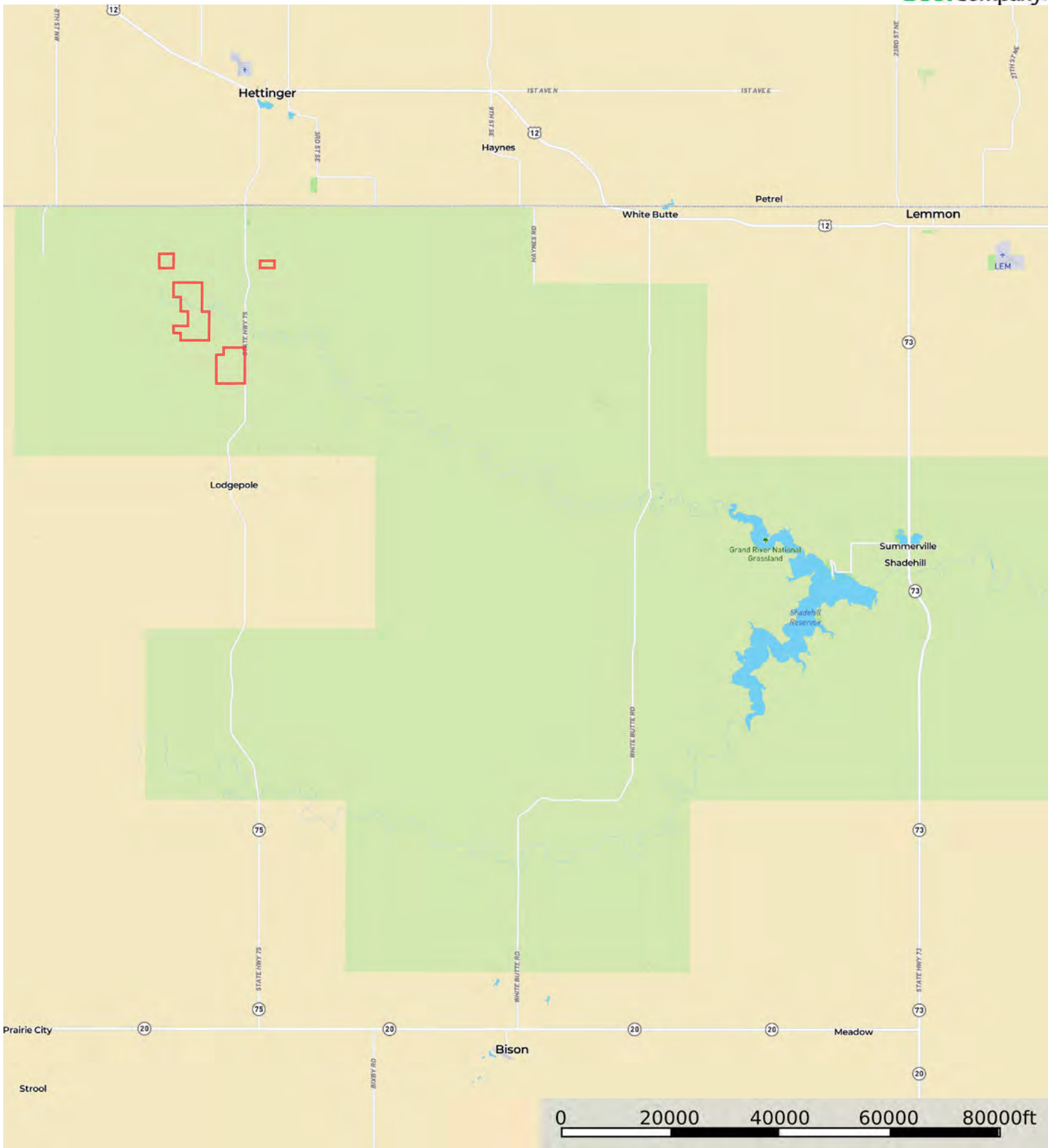


L-2500006

Perkins County, South Dakota, 2124 AC +/-



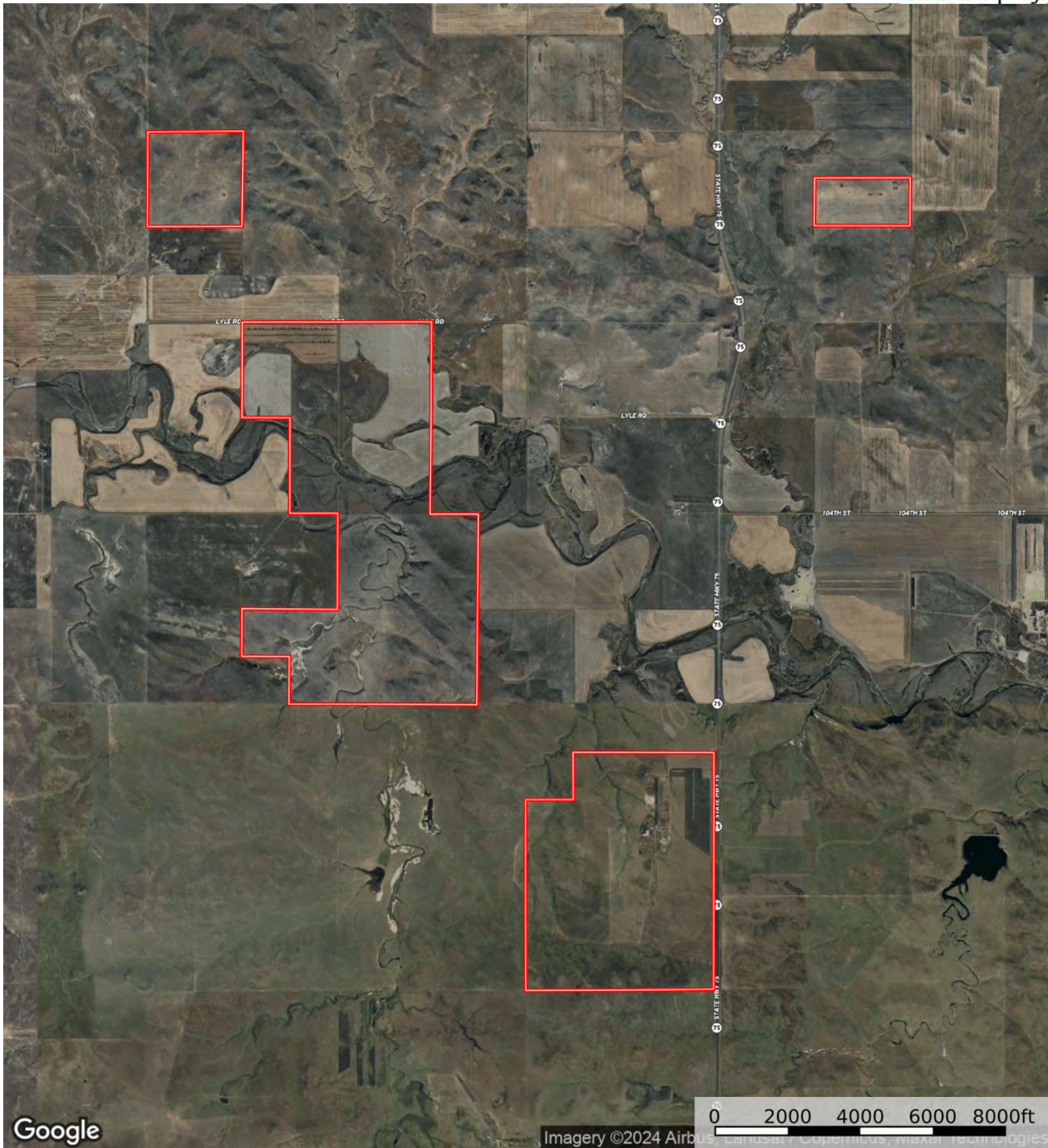
Boundary



The information contained herein was obtained from sources deemed to be reliable. Land id™ Services makes no warranties or guarantees as to the completeness or accuracy thereof.

L-2500006

Perkins County, South Dakota, 2124 AC +/-



Google

Imagery ©2024 Airbus, Cartosat-3, Copernicus, Maxar Technologies

Boundary



The information contained herein was obtained from sources deemed to be reliable. Land id™ Services makes no warranties or guarantees as to the completeness or accuracy thereof.

▮ All Polygons 2120.2 ac

SOIL CODE	SOIL DESCRIPTION	ACRES	%	CPI	NCCPI	CAP
RcC	Reeder-Lantry loams, 2 to 9 percent slopes	314.9 3	14.85	67	32	2e
AdD	Amor-Cabba loams, 9 to 15 percent slopes	296.1 8	13.97	40	22	4e
CaE	Cabba-Lantry complex, 15 to 40 percent slopes	155.1 7	7.32	11	5	7e
CdE	Cohagen-Vebar complex, 15 to 40 percent slopes	151.4 3	7.14	12	15	7e
Sc	Shambo loam	144.1 8	6.8	86	43	2c
FbA	Farnuf-Daglum loams, 0 to 2 percent slopes	115.3 4	5.44	70	35	2c
BfA	Belfield-Rhoades complex, 0 to 2 percent slopes	108.7 9	5.13	61	31	3s
Pa	Parshall fine sandy loam, 0 to 6 percent slopes	92.14	4.35	60	36	3e
RfB	Regent-Wyola silty clay loams, 3 to 6 percent slopes	87.09	4.11	80	32	2e
RmC	Rhoades-Daglum-Rhoades, severely eroded complex, 0 to 9 percent slopes	79.85	3.77	22	16	6s
FaA	Farnuf loam, 0 to 2 percent slopes	78.2	3.69	85	40	2c
VbB	Vebar-Parshall fine sandy loams, 3 to 6 percent slopes	61.36	2.89	63	31	3e
RaA	Reeder loam, 0 to 3 percent slopes	59.34	2.8	86	32	2c
SeA	Stady loam, 0 to 2 percent slopes	57.55	2.71	56	29	3s
Bb	Banks Loamy Fine Sand, 0 to 6 percent slopes, occasionally flooded	55.09	2.6	29	15	6e
ReB	Regent-Daglum complex, 3 to 6 percent slopes	53.5	2.52	56	27	3e
RhD	Regent-Wayden silty clay loams, 6 to 15 percent slopes	36.36	1.71	40	30	3e
VaD	Vebar-Flasher-Tally complex, 9 to 15 percent slopes	35.77	1.69	32	23	6e
Ta	Trembles fine sandy loam	35.44	1.67	41	29	3e
VaC	Vebar-Cohagen fine sandy loams, 6 to 9 percent slopes	29.34	1.38	41	25	4e
SaA	Wyola silty clay loam, 0 to 2 percent slopes	29.2	1.38	86	37	2c
RbB	Reeder-Amor loams, 2 to 6 percent slopes	8.98	0.42	80	36	2e
RdB	Reeder-Rhoades loams, 2 to 6 percent slopes	8.86	0.42	57	33	2e
Fd	Fluvaquents, saline	8.83	0.42	5	4	7s
Db	Dimmick and Heil soils	7.47	0.35	23	17	5w
W	Water	6.39	0.3	0	-	8
FaB	Farnuf loam, 2 to 6 percent slopes	3.42	0.16	80	40	2e
TOTALS		2120. 2(*)	100%	52.23	26.96	3.61

(*) Total acres may differ in the second decimal compared to the sum of each acreage soil. This is

due to a round error because we only show the acres of each soil with two decimal.

| Boundary 157.89 ac

SOIL CODE	SOIL DESCRIPTION	ACRES	%	CPI	NCCPI	CAP
RcC	Reeder-Lantry loams, 2 to 9 percent slopes	105.8 1	67.02	67	32	2e
FbA	Farnuf-Daglum loams, 0 to 2 percent slopes	27.34	17.32	70	35	2c
VaD	Vebar-Flasher-Tally complex, 9 to 15 percent slopes	13.84	8.77	32	23	6e
BfA	Belfield-Rhoades complex, 0 to 2 percent slopes	10.9	6.9	61	31	3s
TOTALS		157.8 9(*)	100%	64.04	31.66	2.42

(*) Total acres may differ in the second decimal compared to the sum of each acreage soil. This is due to a round error because we only show the acres of each soil with two decimal.

| Boundary 80.1 ac

SOIL CODE	SOIL DESCRIPTION	ACRES	%	CPI	NCCPI	CAP
RfB	Regent-Wyola silty clay loams, 3 to 6 percent slopes	45.59	56.91	80	32	2e
RhD	Regent-Wayden silty clay loams, 6 to 15 percent slopes	31.58	39.42	40	30	3e
RcC	Reeder-Lantry loams, 2 to 9 percent slopes	2.81	3.51	67	32	2e
AdD	Amor-Cabba loams, 9 to 15 percent slopes	0.12	0.15	40	22	4e
TOTALS		80.1(*))	100%	63.71	31.19	2.4

(*) Total acres may differ in the second decimal compared to the sum of each acreage soil. This is due to a round error because we only show the acres of each soil with two decimal.

| Boundary 1138.53 ac

SOIL CODE	SOIL DESCRIPTION	ACRES	%	CPI	NCCPI	CAP
CdE	Cohagen-Vebar complex, 15 to 40 percent slopes	151.4 3	13.3	12	15	7e
Sc	Shambo loam	144.1 8	12.66	86	43	2c
BfA	Belfield-Rhoades complex, 0 to 2 percent slopes	97.89	8.6	61	31	3s
Pa	Parshall fine sandy loam, 0 to 6 percent slopes	92.14	8.09	60	36	3e
FbA	Farnuf-Daglum loams, 0 to 2 percent slopes	88.0	7.73	70	35	2c
RmC	Rhoades-Daglum-Rhoades, severely eroded complex, 0 to 9 percent slopes	79.85	7.01	22	16	6s
FaA	Farnuf loam, 0 to 2 percent slopes	78.2	6.87	85	40	2c
VbB	Vebar-Parshall fine sandy loams, 3 to 6 percent slopes	61.36	5.39	63	31	3e
SeA	Stady loam, 0 to 2 percent slopes	57.55	5.05	56	29	3s
Bb	Banks Loamy Fine Sand, 0 to 6 percent slopes, occasionally flooded	55.09	4.84	29	15	6e
AdD	Amor-Cabba loams, 9 to 15 percent slopes	53.99	4.74	40	22	4e

Ta	Trembles fine sandy loam	35.44	3.11	41	29	3e
RcC	Reeder-Lantry loams, 2 to 9 percent slopes	34.18	3.0	67	32	2e
VaC	Vebar-Cohagen fine sandy loams, 6 to 9 percent slopes	29.34	2.58	41	25	4e
CaE	Cabba-Lantry complex, 15 to 40 percent slopes	22.99	2.02	11	5	7e
VaD	Vebar-Flasher-Tally complex, 9 to 15 percent slopes	21.93	1.93	32	23	6e
RdB	Reeder-Rhoades loams, 2 to 6 percent slopes	8.86	0.78	57	33	2e
Fd	Fluvaquents, saline	8.83	0.78	5	4	7s
Db	Dimmick and Heil soils	7.47	0.66	23	17	5w
W	Water	6.39	0.56	0	-	8
FaB	Farnuf loam, 2 to 6 percent slopes	3.42	0.3	80	40	2e
TOTALS		1138.53(*)	100%	50.96	28.07	3.86

(*) Total acres may differ in the second decimal compared to the sum of each acreage soil. This is due to a round error because we only show the acres of each soil with two decimal.

| Boundary 743.68 ac

SOIL CODE	SOIL DESCRIPTION	ACRES	%	CPI	NCCPI	CAP
AdD	Amor-Cabba loams, 9 to 15 percent slopes	242.07	32.55	40	22	4e
RcC	Reeder-Lantry loams, 2 to 9 percent slopes	172.13	23.15	67	32	2e
CaE	Cabba-Lantry complex, 15 to 40 percent slopes	132.18	17.77	11	5	7e
RaA	Reeder loam, 0 to 3 percent slopes	59.34	7.98	86	32	2c
ReB	Regent-Daglum complex, 3 to 6 percent slopes	53.5	7.19	56	27	3e
RfB	Regent-Wyola silty clay loams, 3 to 6 percent slopes	41.5	5.58	80	32	2e
SaA	Wyola silty clay loam, 0 to 2 percent slopes	29.2	3.93	86	37	2c
RbB	Reeder-Amor loams, 2 to 6 percent slopes	8.98	1.21	80	36	2e
RhD	Regent-Wayden silty clay loams, 6 to 15 percent slopes	4.78	0.64	40	30	3e
TOTALS		743.68(*)	100%	50.44	23.82	3.62









(*) Total acres may differ in the second decimal compared to the sum of each acreage soil. This is due to a round error because we only show the acres of each soil with two decimal.

Capability Legend

Increased Limitations and Hazards

Decreased Adaptability and Freedom of Choice Users

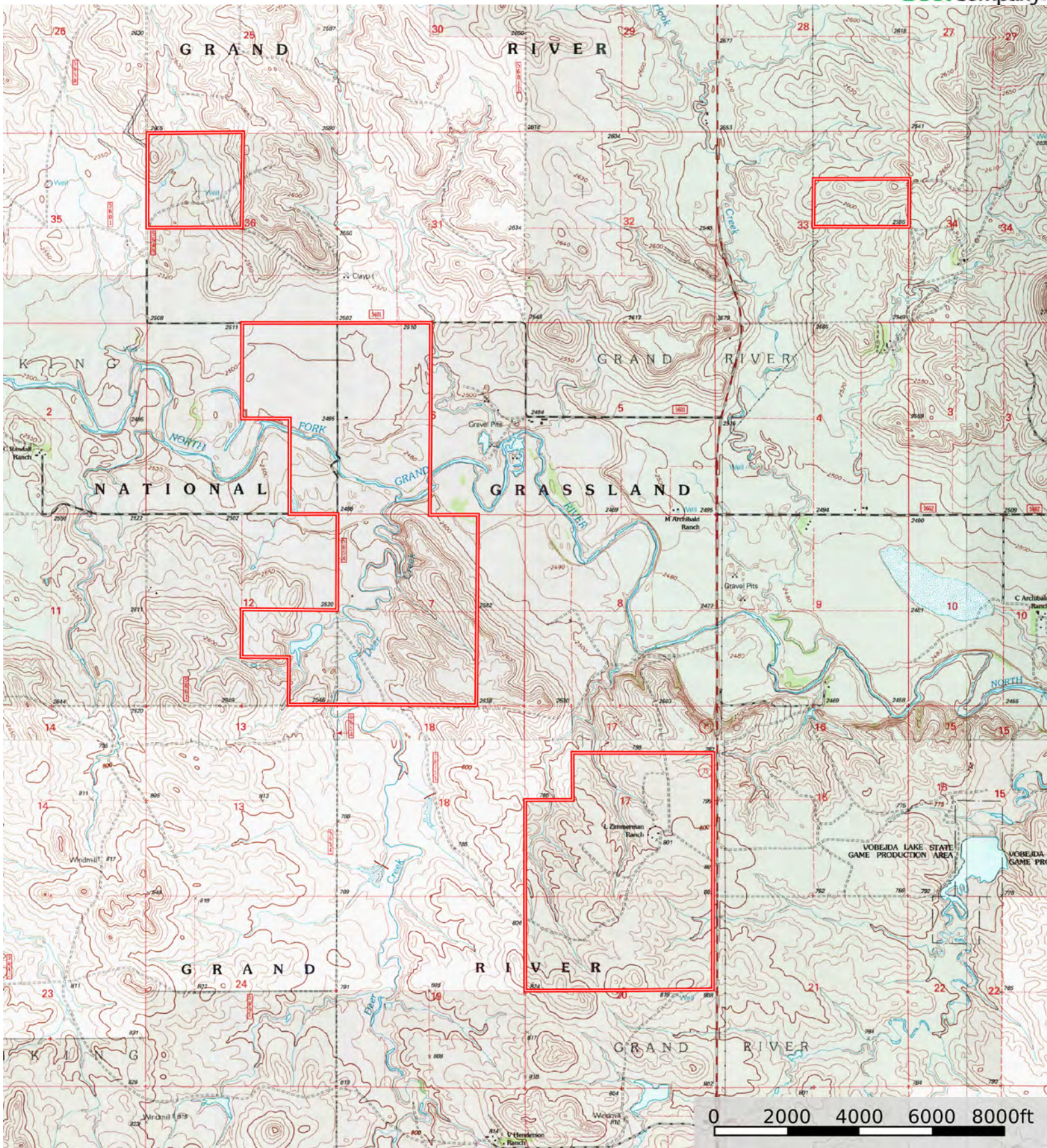
Land, Capability

								
	1	2	3	4	5	6	7	8
'Wild Life'	•	•	•	•	•	•	•	•
Forestry	•	•	•	•	•	•	•	
Limited	•	•	•	•	•	•	•	
Moderate	•	•	•	•	•	•		
Intense	•	•	•	•	•			
Limited	•	•	•	•				
Moderate	•	•	•					
Intense	•	•						
Very Intense	•							

Grazing Cultivation

(c) climatic limitations (e) susceptibility to erosion

(s) soil limitations within the rooting zone (w) excess of water



Boundary

