

Boundary



Boundary





Boundary

| Boundary 131.2 ac

SOIL CODE	SOIL DESCRIPTION	ACRES	%	CSR2	CPI	NCCPI	CAP
83B	Kenyon loam, 2 to 5 percent slopes	33.56	25.58	90.0	0	89	2e
84	Clyde clay loam, 0 to 3 percent slopes	27.51	20.96	88.0	0	91	2w
1152	Marshan clay loam, 0 to 2 percent slopes, rarely flooded	24.38	18.58	54.0	0	82	2w
198B	Floyd loam, 1 to 4 percent slopes	18.46	14.07	89.0	0	88	2w
177	Saude loam, 0 to 2 percent slopes	13.23	10.08	60.0	0	79	2s
394B	Ostrander loam, 2 to 5 percent slopes	4.88	3.72	88.0	0	78	2e
1226	Lawler loam, 0 to 2 percent slopes, rarely flooded	3.65	2.78	59.0	0	87	2s
175B	Dickinson fine sandy loam, 2 to 5 percent slopes	3.24	2.47	50.0	0	61	3e
284	Flagler sandy loam, 0 to 2 percent slopes	1.52	1.16	56.0	0	66	3s
409B	Dickinson fine sandy loam, till substratum, 2 to 5 percent slopes	0.5	0.38	74.0	0	55	3e
391B	Clyde-Floyd complex, 1 to 4 percent slopes	0.17	0.13	87.0	0	89	2w
135	Coland clay loam, 0 to 2 percent slopes, occasionally flooded	0.1	0.08	65.0	0	88	2w
TOTALS		131.2(*)	100%	77.31	-	85.4	2.04









(*) Total acres may differ in the second decimal compared to the sum of each acreage soil. This is due to a round error because we only show the acres of each soil with two decimal.

Capability Legend

Increased Limitations and Hazards

Decreased Adaptability and Freedom of Choice Users

Land, Capability

								
	1	2	3	4	5	6	7	8
'Wild Life'	•	•	•	•	•	•	•	•
Forestry	•	•	•	•	•	•	•	
Limited	•	•	•	•	•	•	•	
Moderate	•	•	•	•	•	•		
Intense	•	•	•	•	•			
Limited	•	•	•	•				
Moderate	•	•	•					
Intense	•	•						
Very Intense	•							

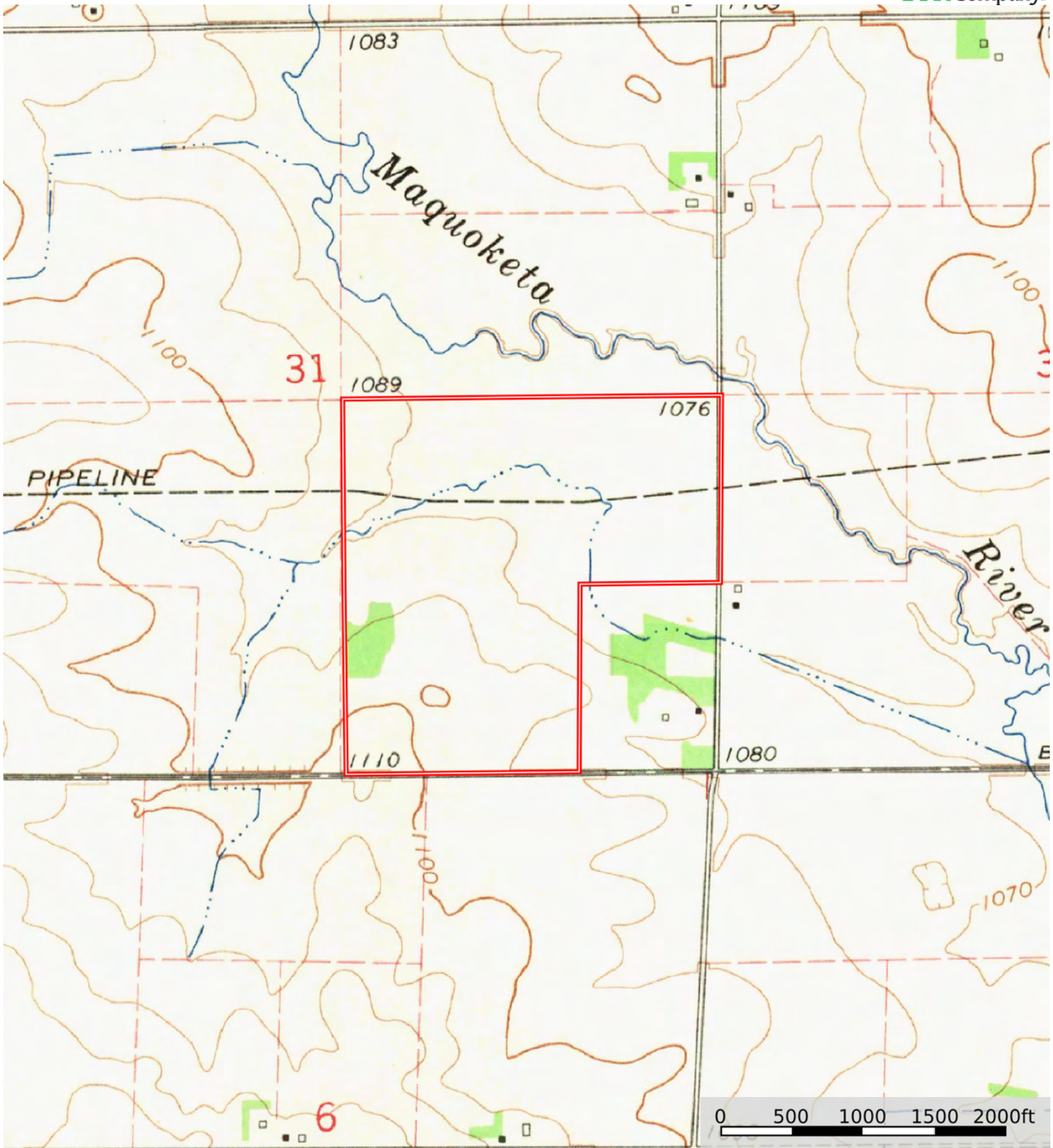
Grazing Cultivation

(c) climatic limitations (e) susceptibility to erosion

(s) soil limitations within the rooting zone (w) excess of water

L-2500022

Fayette County, Iowa, 129.15 AC +/-



Boundary



The information contained herein was obtained from sources deemed to be reliable. Land id™ Services makes no warranties or guarantees as to the completeness or accuracy thereof.