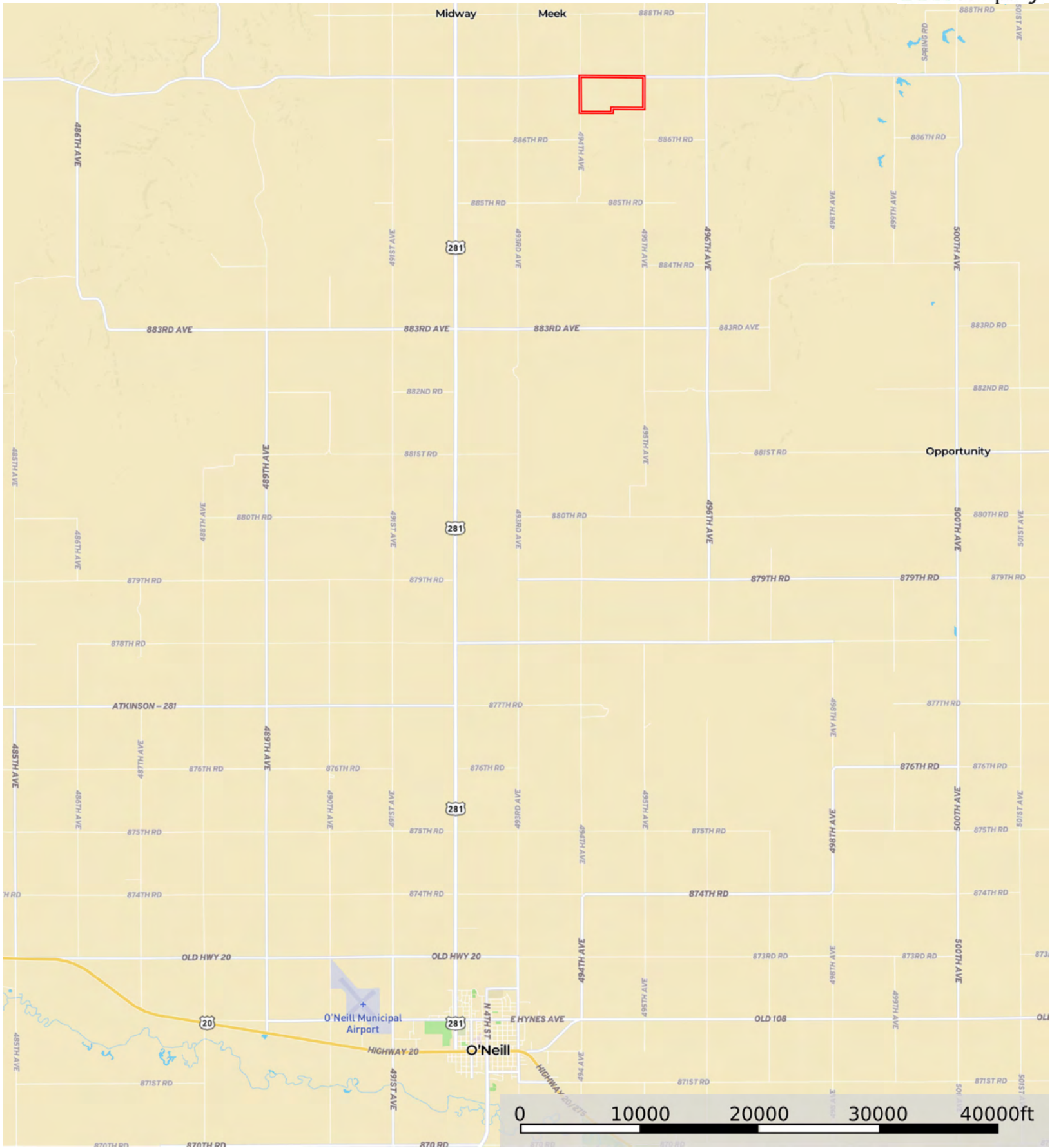


L-2500028

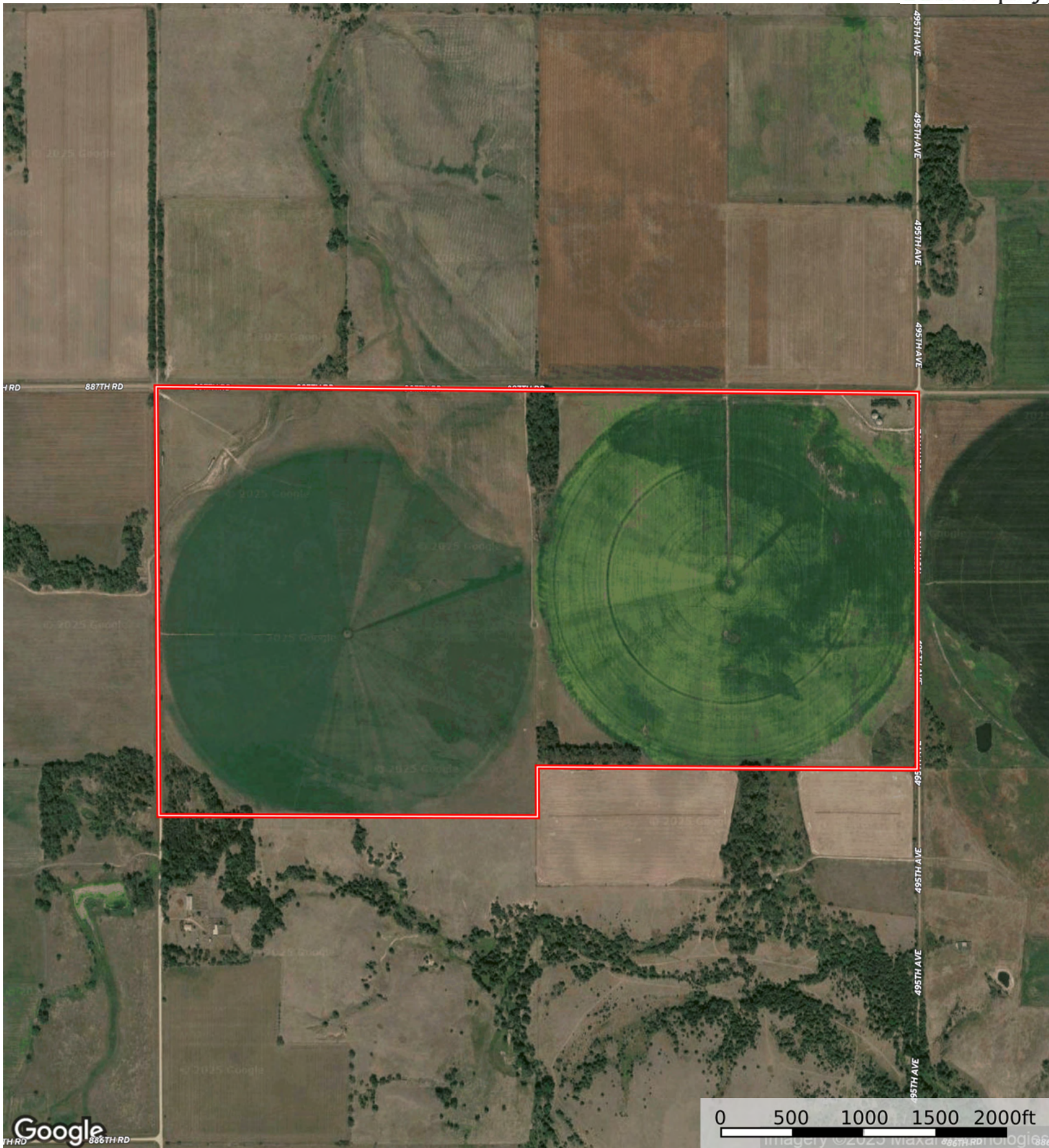
Holt County, Nebraska, 341 AC +/-

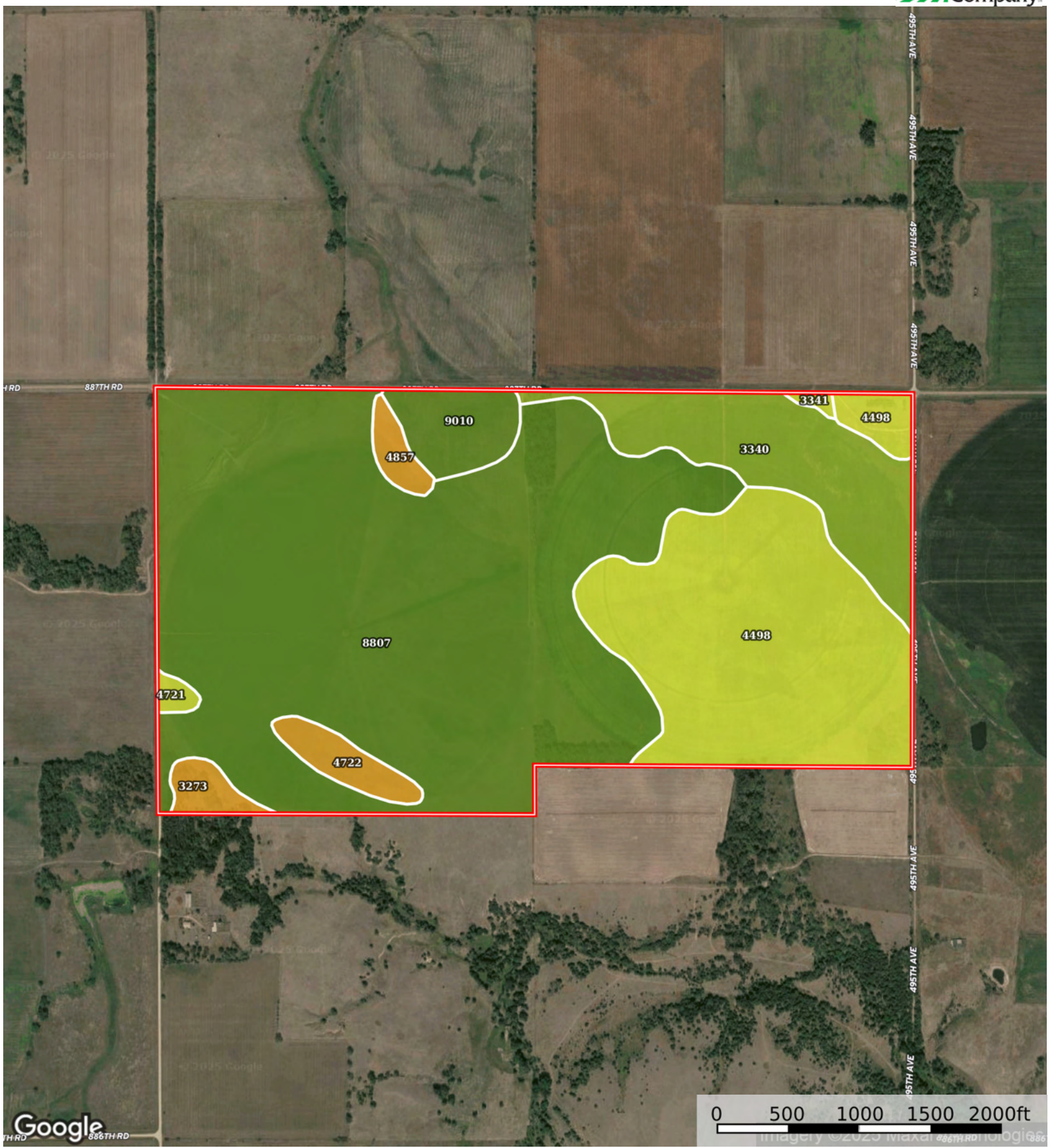


 Boundary



The information contained herein was obtained from sources deemed to be reliable. Land id™ Services makes no warranties or guarantees as to the completeness or accuracy thereof.





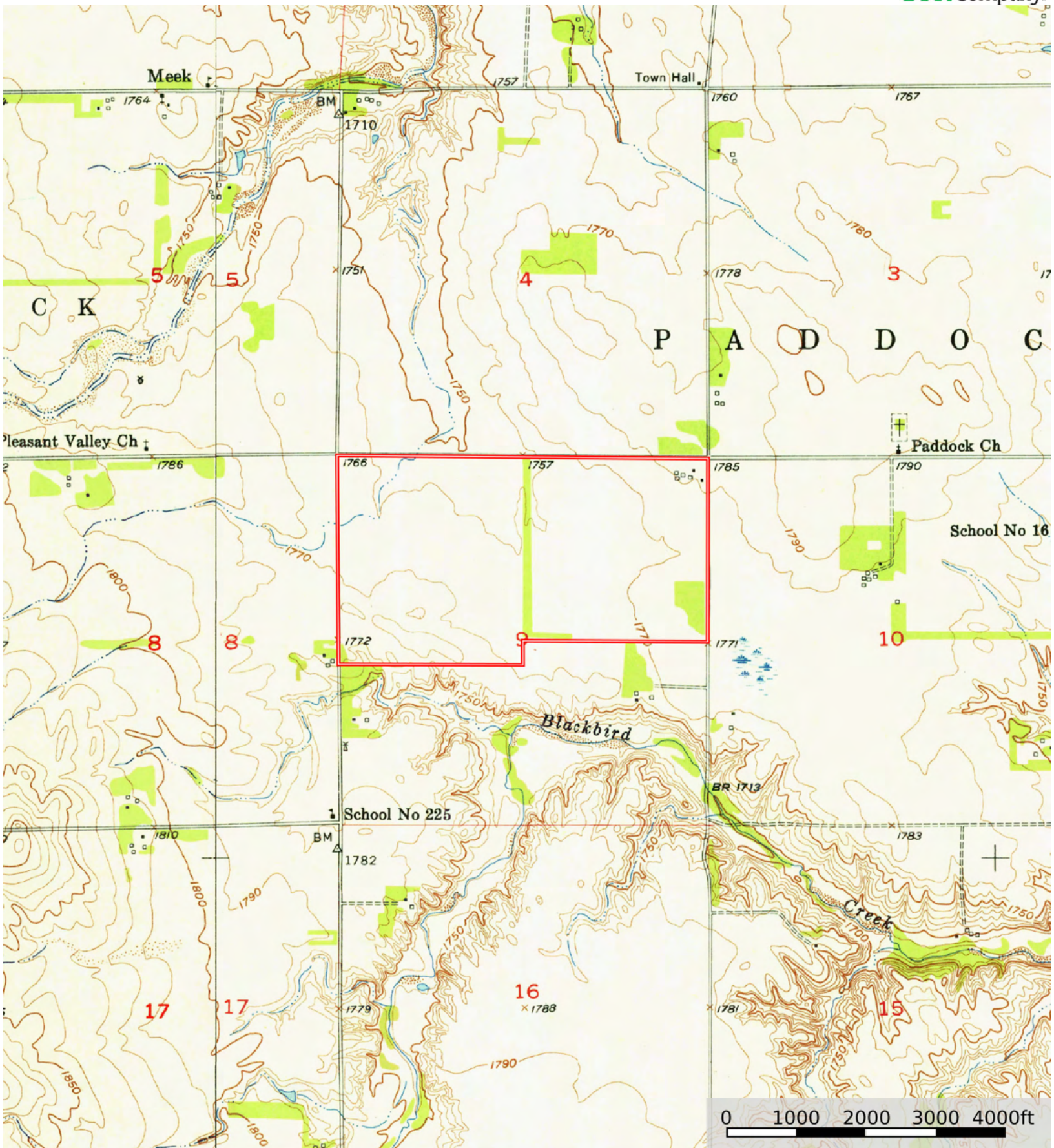
 Boundary

Boundary 344.68 ac

SOIL CODE	SOIL DESCRIPTION	ACRES	%	CPI	NCCPI	CAP
8807	Anselmo-Oneill sandy loams, 0 to 3 percent slopes	201.33	58.41	0	46	2e
4498	Dunday loamy sand, 0 to 3 percent slopes	81.81	23.74	0	36	4e
3340	Wewela fine sandy loam, 0 to 3 percent slopes	34.97	10.15	43	37	3e
9010	Anselmo loam, 0 to 1 percent slopes	10.55	3.06	0	56	2c
4722	Pivot loamy sand, 3 to 9 percent slopes	6.2	1.8	0	34	6e
3273	Oneill-Meadin fine sandy loams, 6 to 11 percent slopes	4.04	1.17	0	38	6e
4857	Valentine-Dunday loamy fine sands, moist, 3-9 percent slopes	3.51	1.02	0	34	6e
4721	Pivot loamy sand, 0 to 3 percent slopes	1.48	0.43	0	33	4e
3341	Wewela fine sandy loam, 3 to 6 percent slopes	0.79	0.23	39	36	4e
TOTALS		344.68(*)	100%	4.45	42.51	2.75

(\*) Total acres may differ in the second decimal compared to the sum of each acreage soil. This is due to a round error because we only show the acres of each soil with two decimal.





 Boundary