
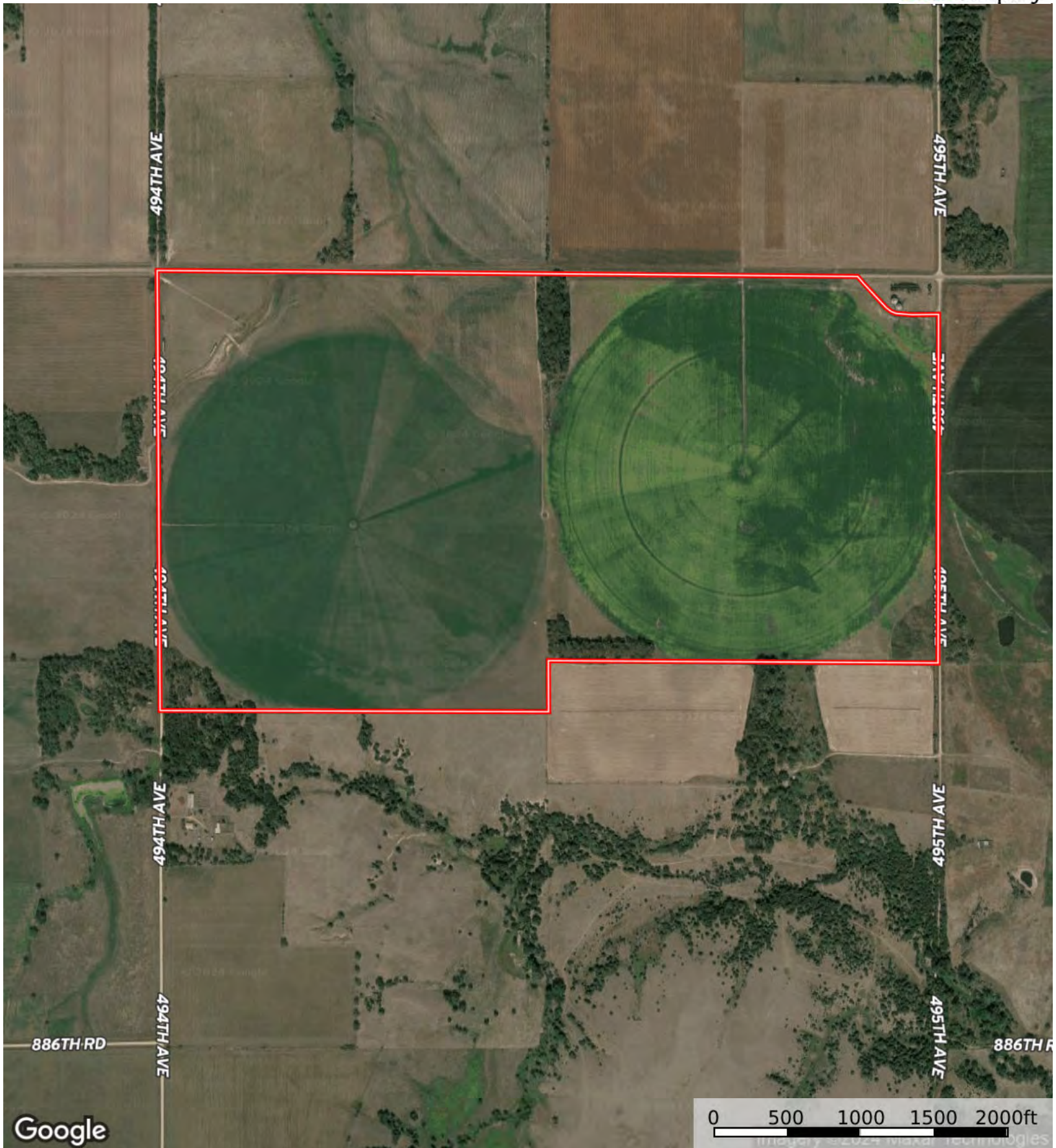


#L-2500028

Holt County, Nebraska, 336 AC +/-



 Boundary



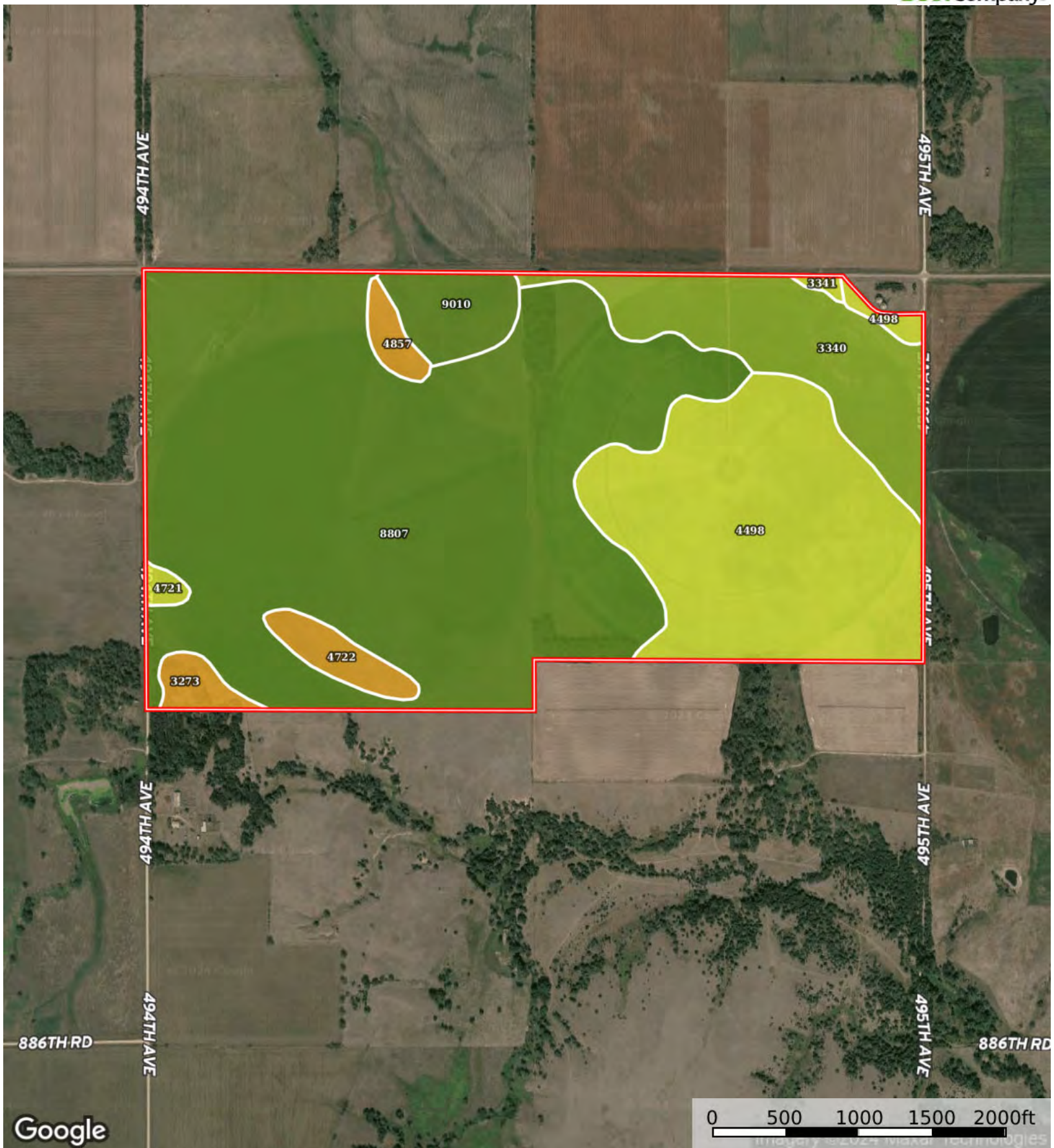
Google

0 500 1000 1500 2000ft
imagery © 2024 Maxar Technologies

Boundary

#L-2500028

Holt County, Nebraska, 336 AC +/-



Google

0 500 1000 1500 2000ft

Boundary

| Boundary 342.13 ac

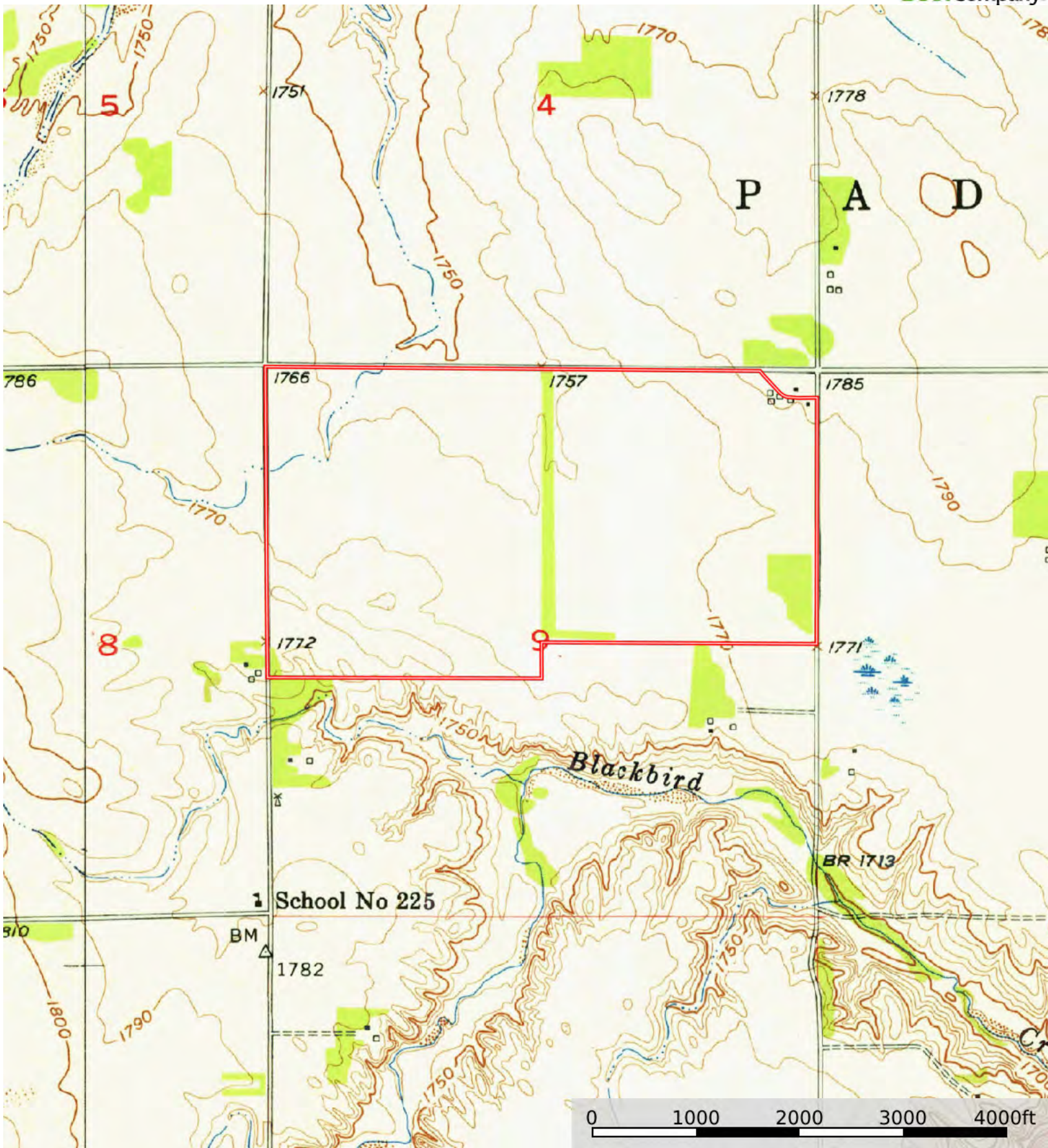
| SOIL CODE | SOIL DESCRIPTION | ACRES | % | CPI | NCCPI | CAP |
|-----------|--|-----------|-------|------|-------|------|
| 8807 | Anselmo-Oneill sandy loams, 0 to 3 percent slopes | 201.33 | 58.85 | 0 | 46 | 2e |
| 4498 | Dunday loamy sand, 0 to 3 percent slopes | 79.26 | 23.17 | 0 | 36 | 4e |
| 3340 | Wewela fine sandy loam, 0 to 3 percent slopes | 34.97 | 10.22 | 43 | 37 | 3e |
| 9010 | Anselmo loam, 0 to 1 percent slopes | 10.55 | 3.08 | 0 | 56 | 2c |
| 4722 | Pivot loamy sand, 3 to 9 percent slopes | 6.2 | 1.81 | 0 | 34 | 6e |
| 3273 | Oneill-Meadin fine sandy loams, 6 to 11 percent slopes | 4.04 | 1.18 | 0 | 38 | 6e |
| 4857 | Valentine-Dunday loamy fine sands, moist, 3-9 percent slopes | 3.51 | 1.03 | 0 | 34 | 6e |
| 4721 | Pivot loamy sand, 0 to 3 percent slopes | 1.48 | 0.43 | 0 | 33 | 4e |
| 3341 | Wewela fine sandy loam, 3 to 6 percent slopes | 0.79 | 0.23 | 39 | 36 | 4e |
| TOTALS | | 342.13(*) | 100% | 4.49 | 42.56 | 2.74 |

(*) Total acres may differ in the second decimal compared to the sum of each acreage soil. This is due to a round error because we only show the acres of each soil with two decimal.



#L-2500028

Holt County, Nebraska, 336 AC +/-



Boundary