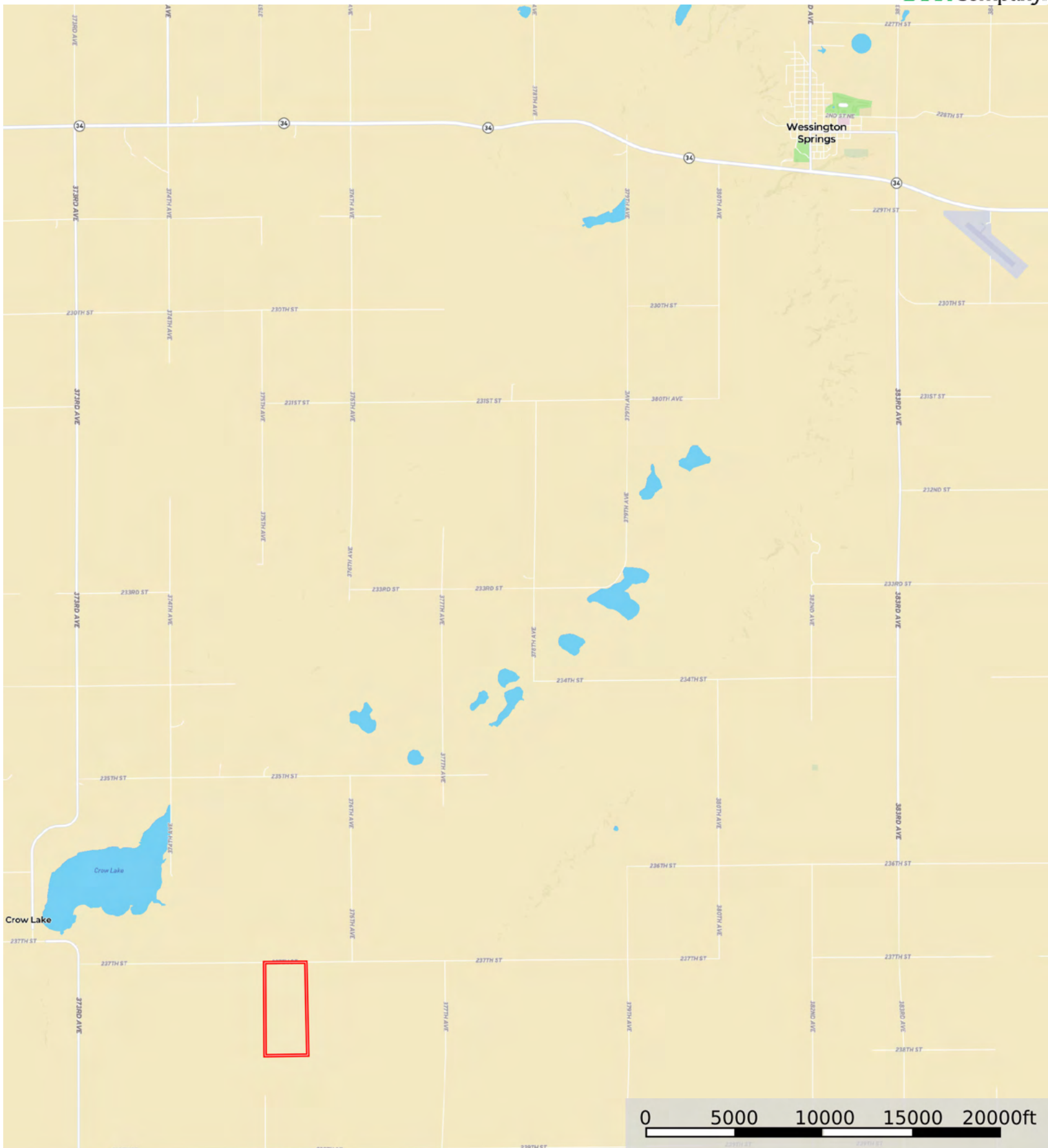


L-2500030

Jerauld County, South Dakota, 299.54 AC +/-



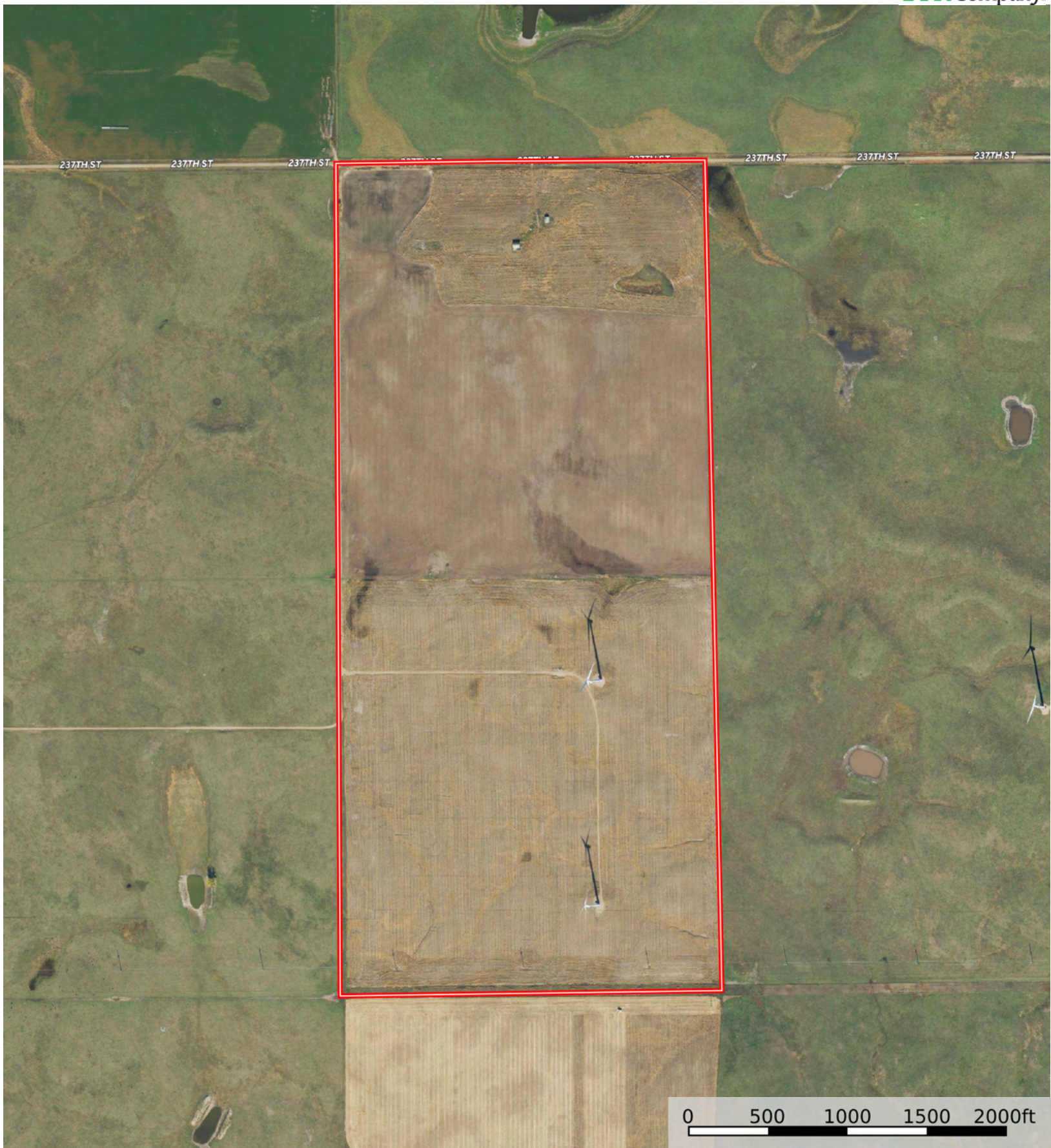
Boundary



The information contained herein was obtained from sources deemed to be reliable. Land id™ Services makes no warranties or guarantees as to the completeness or accuracy thereof.

L-2500030

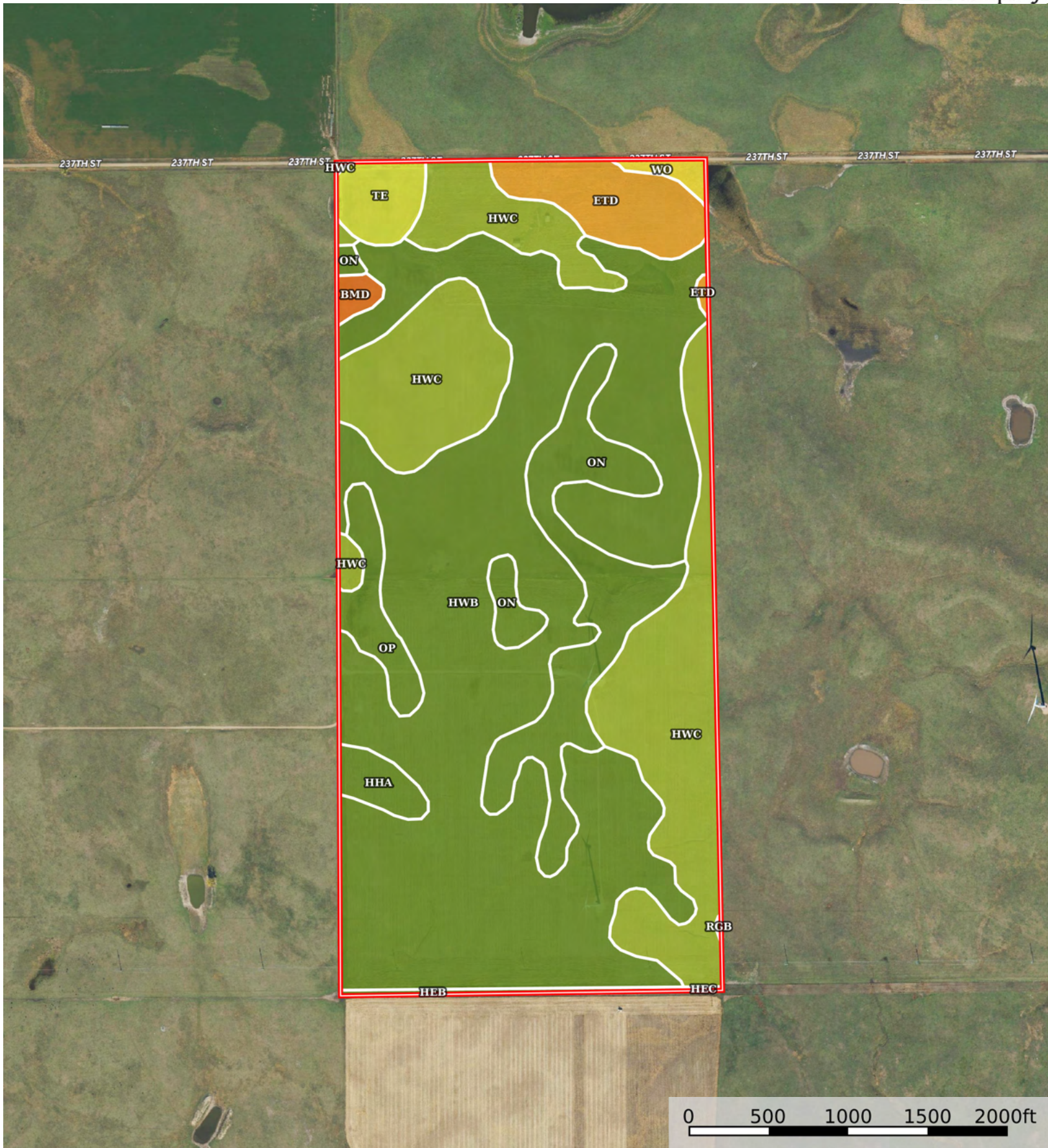
Jerauld County, South Dakota, 299.54 AC +/-



Boundary

L-2500030

Jerauld County, South Dakota, 299.54 AC +/-



Boundary



The information contained herein was obtained from sources deemed to be reliable. Land id™ Services makes no warranties or guarantees as to the completeness or accuracy thereof.

| Boundary 287.43 ac

SOIL CODE	SOIL DESCRIPTION	ACRES	%	CPI	NCCPI	CAP
HwB	Houdek-Ethan-Prosper loams, 1 to 6 percent slopes	156.0 1	54.28	78	64	2e
HwC	Houdek-Ethan-Prosper loams, 2 to 9 percent slopes	67.79	23.59	65	63	3e
On	Mobridge silt loam, 0 to 2 percent slopes	29.55	10.28	94	65	2c
EtD	Ethan-Betts loams, 9 to 15 percent slopes	12.37	4.3	31	57	6e
Op	Onita-Plankinton silt loams	7.01	2.44	82	48	2c
Te	Tetonka silt loam, 0 to 1 percent slopes	5.89	2.05	57	23	4w
HhA	Highmore-Mobridge silt loams, 0 to 2 percent slopes	3.83	1.33	87	61	2c
Wo	Worthing silty clay loam, 0 to 1 percent slopes	1.68	0.58	31	14	5w
BmD	Betts-Ethan loams, 6 to 40 percent slopes, stony	1.55	0.54	13	29	7s
HeB	Houdek-Ethan loams, 2 to 6 percent slopes	1.52	0.53	71	63	2e
HeC	Houdek-Ethan loams, 6 to 9 percent slopes	0.14	0.05	58	63	3e
RgB	Raber-Jerauld-Cavo complex, 0 to 6 percent slopes	0.09	0.03	50	43	3e
TOTALS		287.4 3(*)	100%	73.67	61.8	2.49









(\*) Total acres may differ in the second decimal compared to the sum of each acreage soil. This is due to a round error because we only show the acres of each soil with two decimal.

## Capability Legend

Increased Limitations and Hazards

Decreased Adaptability and Freedom of Choice Users

Land, Capability

								
	1	2	3	4	5	6	7	8
'Wild Life'	•	•	•	•	•	•	•	•
Forestry	•	•	•	•	•	•	•	
Limited	•	•	•	•	•	•	•	
Moderate	•	•	•	•	•	•		
Intense	•	•	•	•	•			
Limited	•	•	•	•				
Moderate	•	•	•					
Intense	•	•						
Very Intense	•							

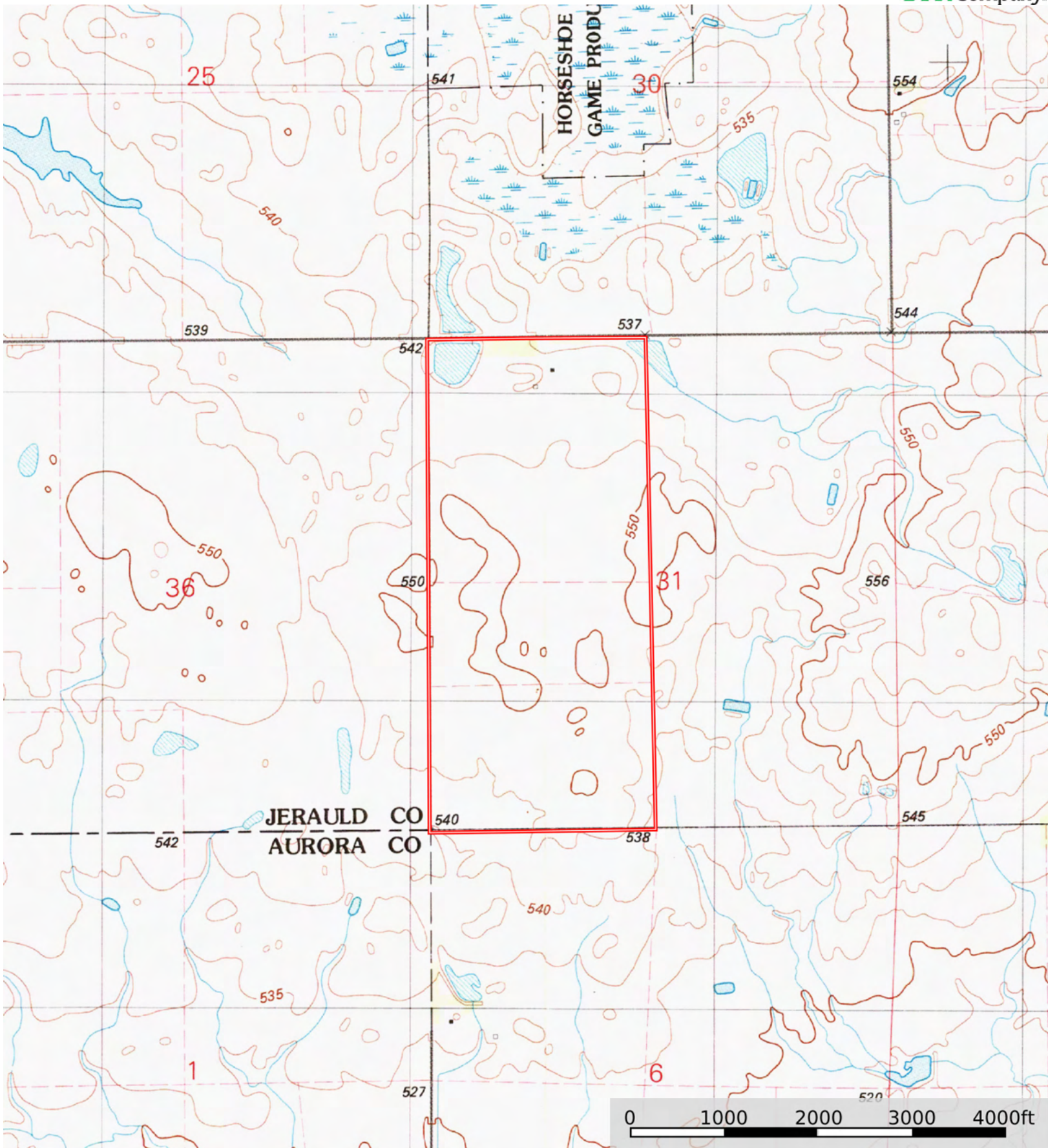
### Grazing Cultivation

(c) climatic limitations (e) susceptibility to erosion

(s) soil limitations within the rooting zone (w) excess of water

L-2500030

Jerauld County, South Dakota, 299.54 AC +/-



Boundary



The information contained herein was obtained from sources deemed to be reliable. Land id™ Services makes no warranties or guarantees as to the completeness or accuracy thereof.