

L-2500032

Custer County, Nebraska, 86.38 AC +/-



Boundary



The information contained herein was obtained from sources deemed to be reliable. Land ID™ Services makes no warranties or guarantees as to the completeness or accuracy thereof.

L-2500032

Custer County, Nebraska, 86.38 AC +/-



Boundary



L-2500032

Custer County, Nebraska, 86.38 AC +/-



Boundary



The information contained herein was obtained from sources deemed to be reliable. Land id™ Services makes no warranties or guarantees as to the completeness or accuracy thereof.

|  All Polygons 86.86 ac

SOIL CODE	SOIL DESCRIPTION	ACRES	%	CPI	NCCPI	CAP
8870	Hord silt loam, 1 to 3 percent slopes	24.63	28.36	0	75	2e
2543	Coly silt loam, 11 to 17 percent slopes, eroded, cool	14.89	17.14	0	53	6e
2831	Uly-Coly silt loams, 17 to 30 percent slopes, eroded	12.94	14.9	0	49	6e
8869	Hord silt loam, 0 to 1 percent slopes	11.58	13.33	0	75	2c
3562	Hobbs silt loam, occasionally flooded, cool	8.04	9.26	0	74	2w
2538	Coly silt loam, 6 to 11 percent slopes, eroded	7.99	9.2	0	58	4e
3545	Hobbs silt loam, channeled, frequently flooded	6.79	7.82	0	36	6w
TOTALS		86.86(*)	100%	-	62.66	3.78

(\*) Total acres may differ in the second decimal compared to the sum of each acreage soil. This is due to a round error because we only show the acres of each soil with two decimal.

| Boundary 80.75 ac

SOIL CODE	SOIL DESCRIPTION	ACRES	%	CPI	NCCPI	CAP
8870	Hord silt loam, 1 to 3 percent slopes	24.22	29.99	0	75	2e
2543	Coly silt loam, 11 to 17 percent slopes, eroded, cool	14.89	18.44	0	53	6e
2831	Uly-Coly silt loams, 17 to 30 percent slopes, eroded	12.94	16.02	0	49	6e
8869	Hord silt loam, 0 to 1 percent slopes	11.58	14.34	0	75	2c
2538	Coly silt loam, 6 to 11 percent slopes, eroded	7.99	9.89	0	58	4e
3562	Hobbs silt loam, occasionally flooded, cool	7.17	8.88	0	74	2w
3545	Hobbs silt loam, channeled, frequently flooded	1.96	2.43	0	36	6w
TOTALS		80.75(*)	100%	-	64.06	3.67

(\*) Total acres may differ in the second decimal compared to the sum of each acreage soil. This is due to a round error because we only show the acres of each soil with two decimal.

| Boundary 6.11 ac

SOIL CODE	SOIL DESCRIPTION	ACRES	%	CPI	NCCPI	CAP
3545	Hobbs silt loam, channeled, frequently flooded	4.83	79.18	0	36	6w
3562	Hobbs silt loam, occasionally flooded, cool	0.87	14.26	0	74	2w
8870	Hord silt loam, 1 to 3 percent slopes	0.41	6.72	0	75	2e
TOTALS		6.11(*)	100%	-	44.1	5.16




(\*) Total acres may differ in the second decimal compared to the sum of each acreage soil. This is due to a round error because we only show the acres of each soil with two decimal.

## Capability Legend

Increased Limitations and Hazards

Decreased Adaptability and Freedom of Choice Users

Land, Capability

								
	1	2	3	4	5	6	7	8
'Wild Life'	•	•	•	•	•	•	•	•
Forestry	•	•	•	•	•	•	•	
Limited	•	•	•	•	•	•	•	
Moderate	•	•	•	•	•	•		
Intense	•	•	•	•	•			
Limited	•	•	•	•				
Moderate	•	•	•					
Intense	•	•						
Very Intense	•							

### Grazing Cultivation

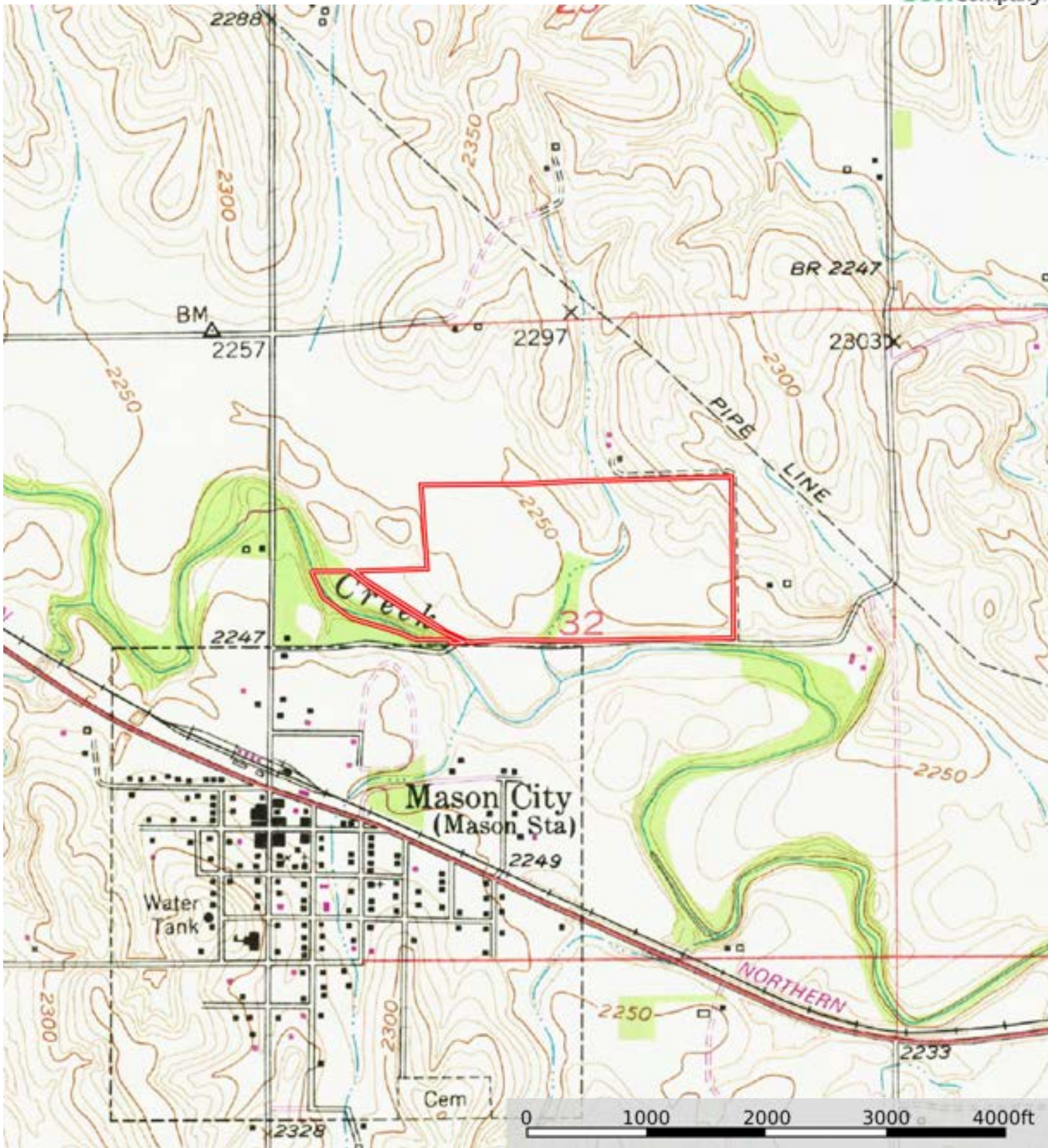
(c) climatic limitations (e) susceptibility to erosion

(s) soil limitations within the rooting zone (w) excess of water



L-2500032

Custer County, Nebraska, 86.38 AC +/-



Boundary



The information contained herein was obtained from sources deemed to be reliable. Land id™ Services makes no warranties or guarantees as to the completeness or accuracy thereof.