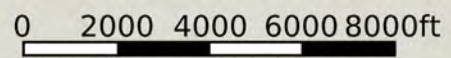
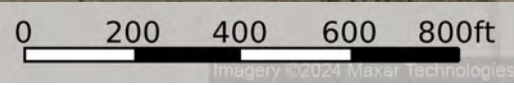


Boundary

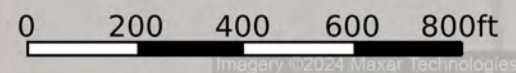




Google



Boundary



Google

Imagery ©2024 Maxar Technologies

Boundary



The information contained herein was obtained from sources deemed to be reliable. Land id™ Services makes no warranties or guarantees as to the completeness or accuracy thereof.

| Boundary 160.3 ac

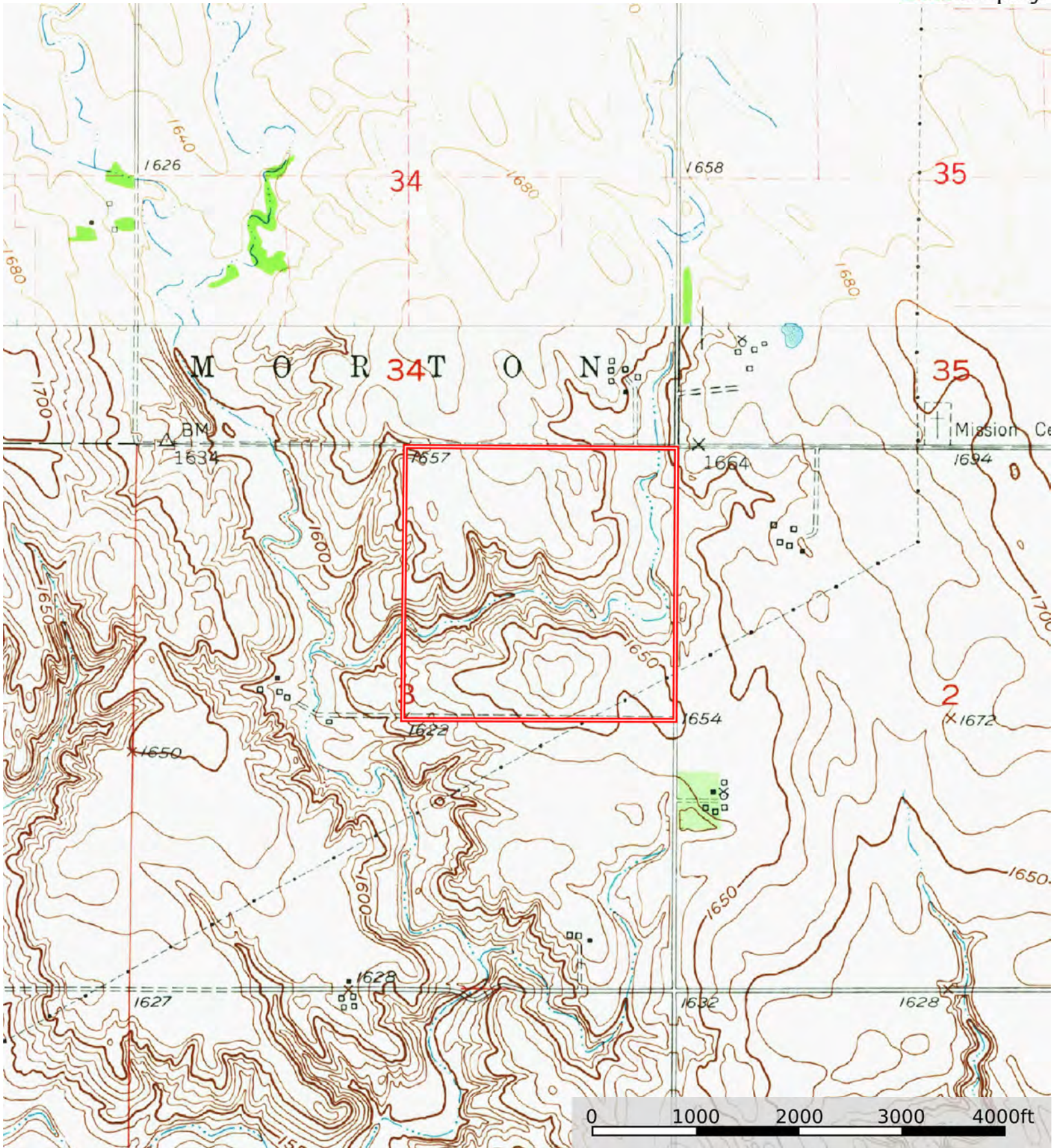
SOIL CODE	SOIL DESCRIPTION	ACRES	%	CPI	NCCPI	CAP
3234	Monowi-Bristow silty clays, 11 to 30 percent slopes	49.45	30.85	0	20	6e
3221	Labu silty clay, 6 to 11 percent slopes	27.48	17.14	0	22	4e
3305	Reliance silt loam, 2 to 6 percent slopes	24.17	15.08	86	53	3e
5220	Onita silt loam, 0 to 2 percent slopes	18.3	11.42	94	60	2c
6314	Barney silt loam, channeled, frequently flooded	13.49	8.41	0	13	5w
3230	Monowi silty clay, 2 to 6 percent slopes	13.16	8.21	0	36	3e
3231	Monowi silty clay, 6 to 11 percent slopes	12.14	7.57	0	35	4e
9004	Anselmo fine sandy loam, 3 to 6 percent slopes	1.89	1.18	54	40	3e
9003	Anselmo fine sandy loam, 9 to 15 percent slopes	0.22	0.14	40	38	6e
TOTALS		160.3(*)	100%	24.39	32.0	4.23

(*) Total acres may differ in the second decimal compared to the sum of each acreage soil. This is due to a round error because we only show the acres of each soil with two decimal.



L-2500036

Boyd County, Nebraska, 160.25 AC +/-



Boundary



The information contained herein was obtained from sources deemed to be reliable. Land id™ Services makes no warranties or guarantees as to the completeness or accuracy thereof.