

L-2500049

Holt County, Nebraska, 152 AC +/-



Boundary



The information contained herein was obtained from sources deemed to be reliable. Land ID™ Services makes no warranties or guarantees as to the completeness or accuracy thereof.

L-2500049

Holt County, Nebraska, 152 AC +/-



Boundary



The information contained herein was obtained from sources deemed to be reliable. Land id™ Services makes no warranties or guarantees as to the completeness or accuracy thereof.

L-2500049

Holt County, Nebraska, 152 AC +/-



Boundary



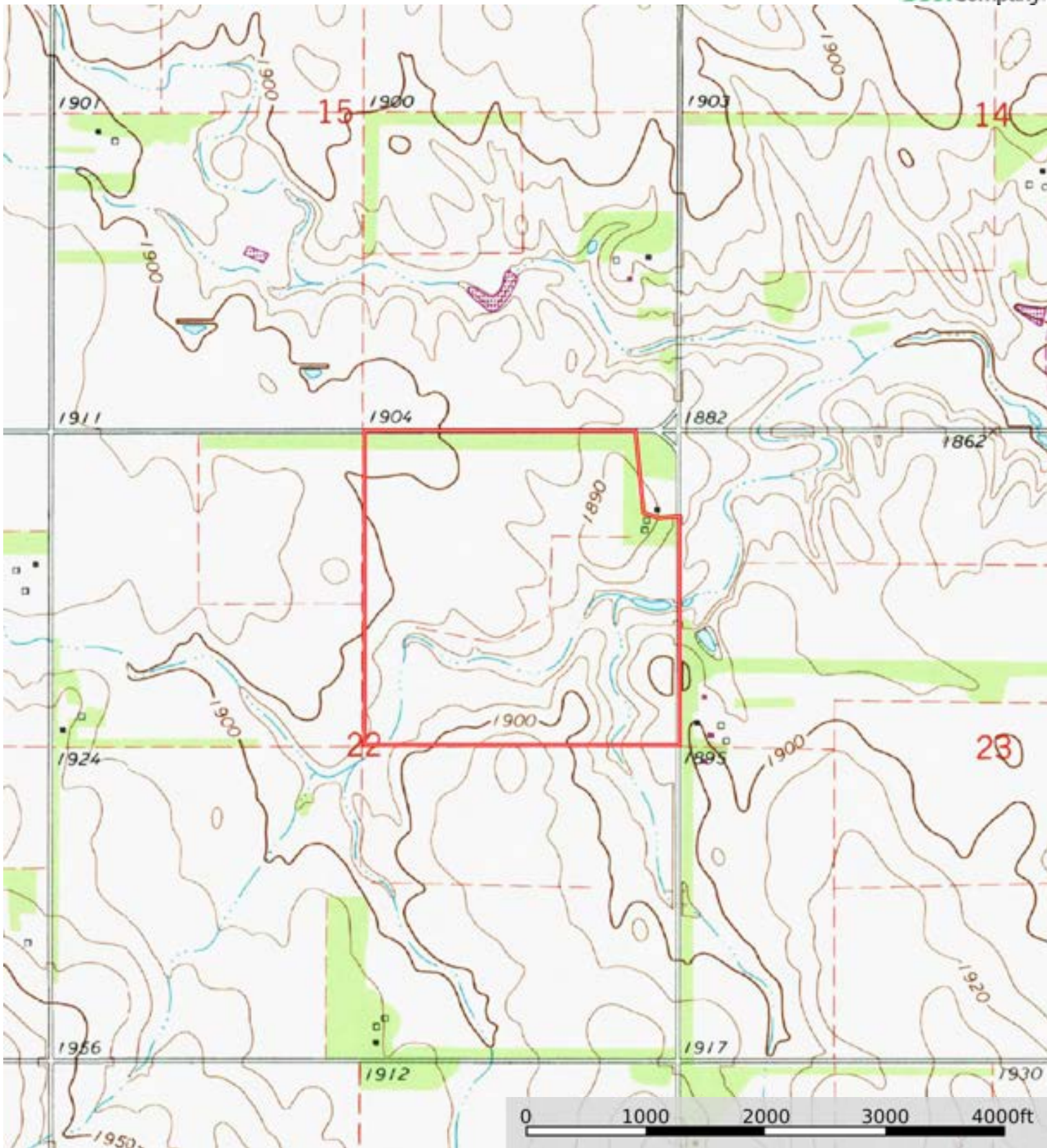
The information contained herein was obtained from sources deemed to be reliable. Land id™ Services makes no warranties or guarantees as to the completeness or accuracy thereof.

| Boundary 154.15 ac

SOIL CODE	SOIL DESCRIPTION	ACRES	%	CPI	NCCPI	CAP
4498	Dunday loamy sand, 0 to 3 percent slopes	53.9	34.97	0	36	4e
2331	Inavale loamy fine sand, rarely flooded	28.32	18.37	0	27	4e
9007	Anselmo fine sandy loam, 0 to 3 percent slopes	26.57	17.24	59	41	2e
4499	Dunday loamy sand, 3 to 6 percent slopes	19.35	12.55	0	35	4e
4857	Valentine-Dunday loamy fine sands, moist, 3-9 percent slopes	17.79	11.54	0	34	6e
6636	Boelus loamy fine sand, 0 to 2 percent slopes	4.75	3.08	0	56	3e
3260	Oneill fine sandy loam, 0 to 2 percent slopes	2.89	1.87	0	35	2c
3287	Paka loam, 3 to 9 percent slopes, eroded	0.39	0.25	0	63	3e
6665	Brunswick-Pivot complex, 11 to 30 percent slopes	0.19	0.12	0	28	6e
TOTALS		154.15(*)	100%	10.17	35.51	3.82

(\*) Total acres may differ in the second decimal compared to the sum of each acreage soil. This is due to a round error because we only show the acres of each soil with two decimal.





Boundary