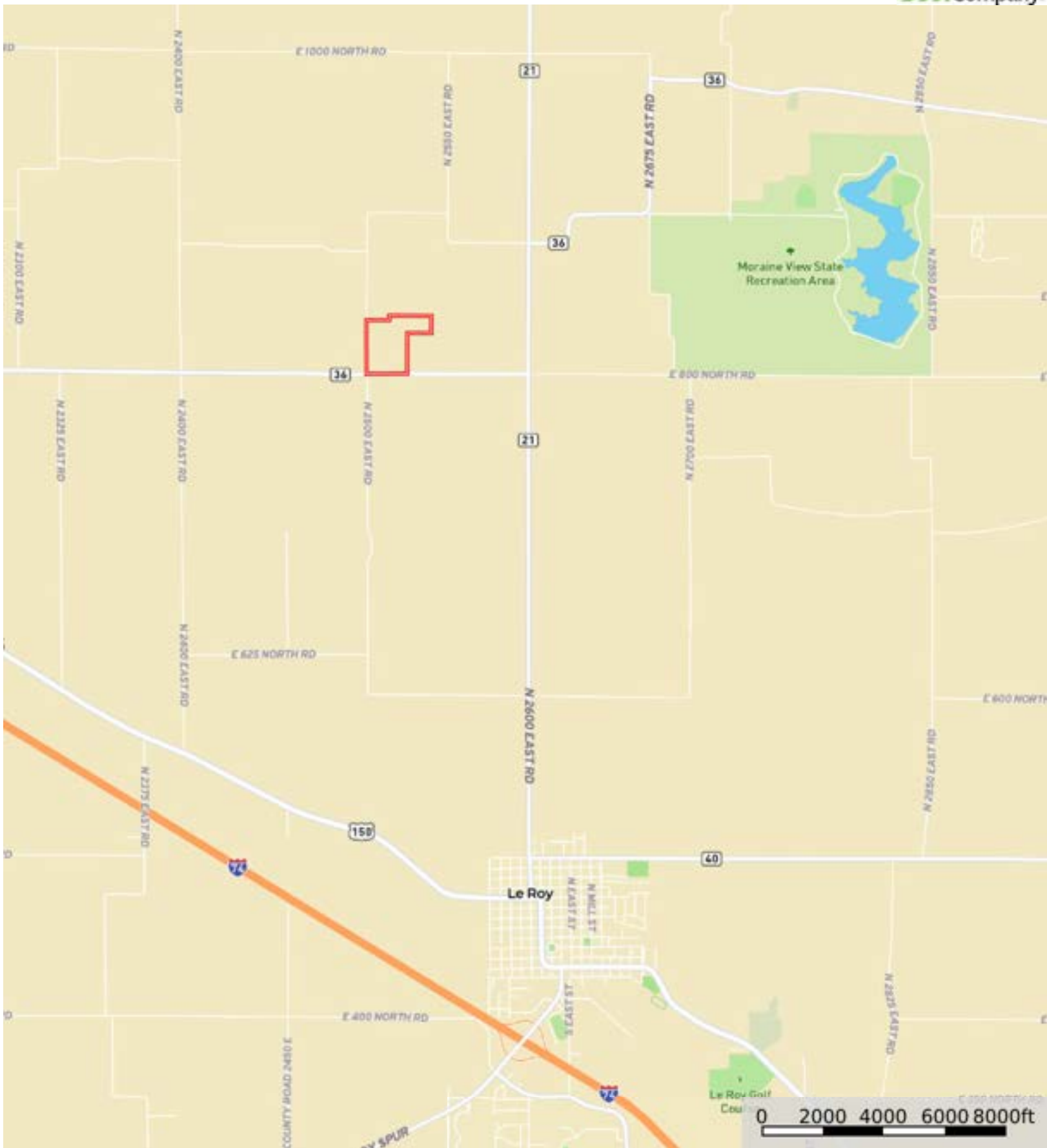


L-2500058

McLean County, Illinois, 67 AC +/-



Boundary

L-2500058

McLean County, Illinois, 67 AC +/-



Boundary



The information contained herein was obtained from sources deemed to be reliable. Land id™ Services makes no warranties or guarantees as to the completeness or accuracy thereof.



Boundary



| Boundary 67.01 ac

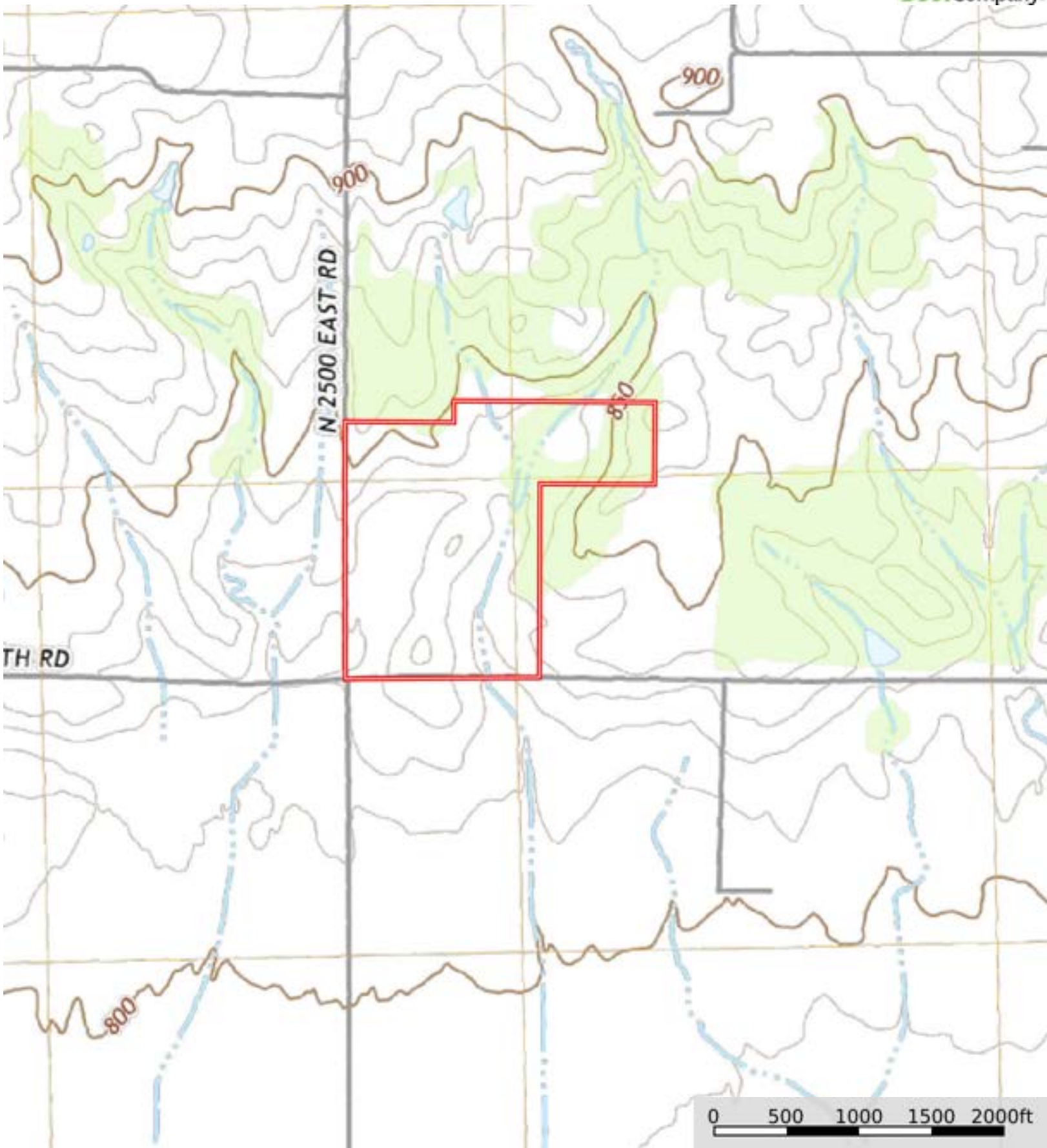
SOIL CODE	SOIL DESCRIPTION	ACRES	%	PI	NCCPI	CAP
68A	Sable silty clay loam, 0 to 2 percent slopes	21.73	32.43	143	83	2w
224C2	Strawn loam, 5 to 10 percent slopes, eroded	14.7	21.94	98	44	3e
145C2	Saybrook silt loam, 5 to 10 percent slopes, eroded	14.25	21.27	123	70	3e
154A	Flanagan silt loam, 0 to 2 percent slopes	5.68	8.48	144	90	1
27B2	Miami silt loam, 2 to 5 percent slopes, eroded	4.61	6.88	106	60	2e
145B2	Saybrook silt loam, 2 to 5 percent slopes, eroded	3.13	4.67	124	68	2e
171B2	Catlin silt loam, 2 to 5 percent slopes, eroded	2.89	4.31	131	75	2e
964D	Miami and Hennepin soils, 10 to 18 percent slopes	0.02	0.03	91	51	4e
TOTALS		67.01(*)	100%	124.99	69.64	2.35

(\*) Total acres may differ in the second decimal compared to the sum of each acreage soil. This is due to a round error because we only show the acres of each soil with two decimal.



L-2500058

McLean County, Illinois, 67 AC +/-



Boundary



The information contained herein was obtained from sources deemed to be reliable. Land ID™ Services makes no warranties or guarantees as to the completeness or accuracy thereof.