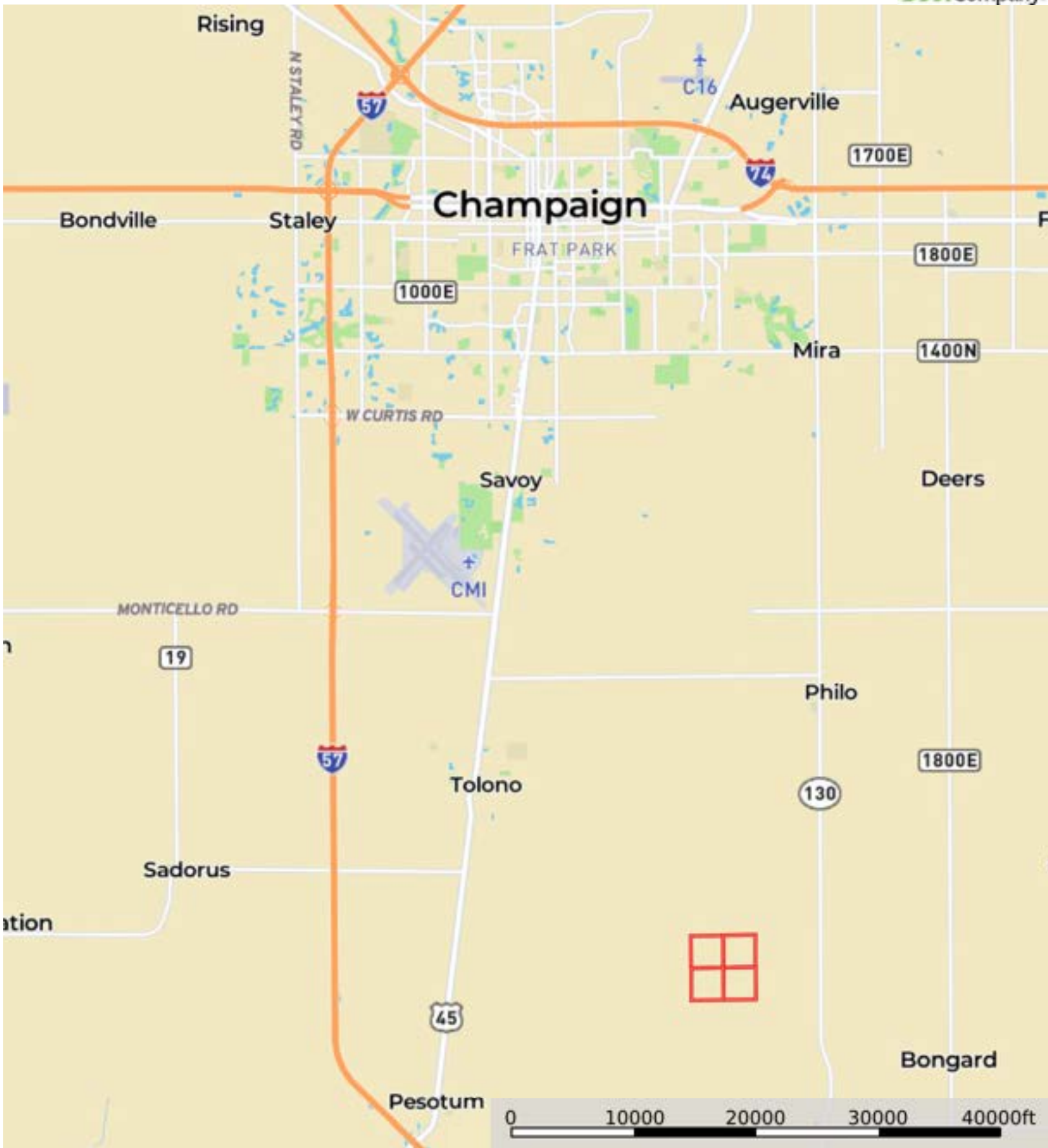


L-2500065

Champaign County, Illinois, 640 AC +/-



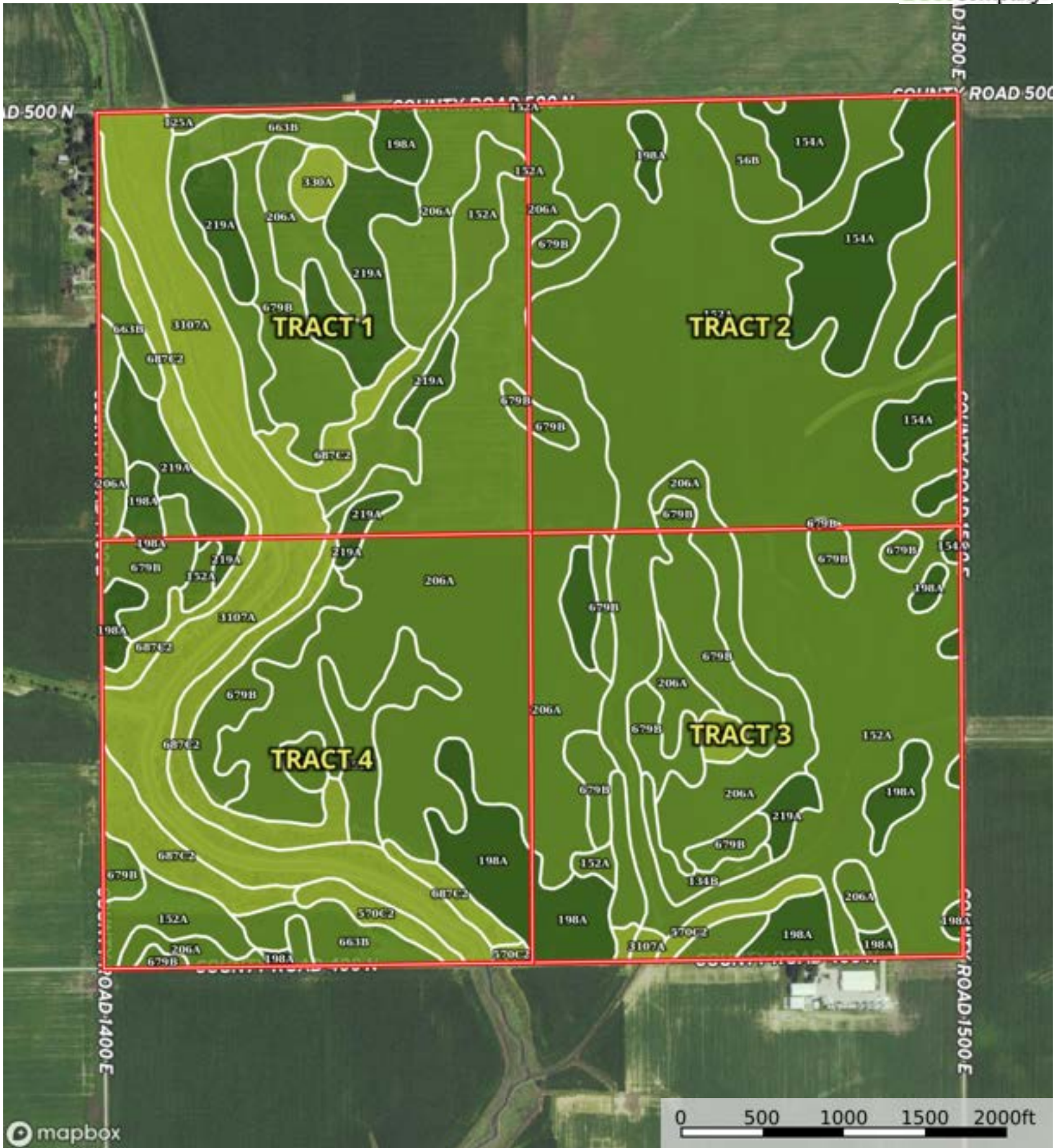
Boundary



The information contained herein was obtained from sources deemed to be reliable. Land ID™ Services makes no warranties or guarantees as to the completeness or accuracy thereof.



Boundary



Boundary



|  All Polygons 643.38 ac

SOIL CODE	SOIL DESCRIPTION	ACRES	%	PI	NCCPI	CAP
152A	Drummer silty clay loam, 0 to 2 percent slopes	195.29	30.35	144	83	2w
206A	Thorp silt loam, 0 to 2 percent slopes	154.82	24.06	126	89	2w
679B	Blackberry silt loam, 2 to 5 percent slopes	61.67	9.59	141	90	2e
3107A	Sawmill silty clay loam, 0 to 2 percent slopes, frequently flooded	50.81	7.9	139	63	3w
198A	Elburn silt loam, 0 to 2 percent slopes	34.55	5.37	143	91	1
687C2	Penfield loam, 5 to 10 percent slopes, eroded	33.95	5.28	121	84	3e
219A	Millbrook silt loam, 0 to 2 percent slopes	33.13	5.15	129	87	1
154A	Flanagan silt loam, 0 to 2 percent slopes	32.56	5.06	144	90	1
663B	Clare silt loam, 2 to 5 percent slopes	21.67	3.37	133	91	2e
570C2	Martinsville loam, 5 to 10 percent slopes, eroded	7.14	1.11	106	71	3e
134B	Camden silt loam, 2 to 5 percent slopes	6.17	0.96	117	91	2e
56B	Dana silt loam, 2 to 5 percent slopes	5.59	0.87	130	90	2e
330A	Peotone silty clay loam, 0 to 2 percent slopes	4.4	0.68	123	63	3w
125A	Selma loam, 0 to 2 percent slopes	1.63	0.25	129	77	2w
TOTALS		643.38(*)	100%	135.59	84.7	1.99

(*) Total acres may differ in the second decimal compared to the sum of each acreage soil. This is due to a round error because we only show the acres of each soil with two decimal.

| Boundary 160.68 ac

SOIL CODE	SOIL DESCRIPTION	ACRES	%	PI	NCCPI	CAP
206A	Thorp silt loam, 0 to 2 percent slopes	48.95	30.46	126	89	2w
219A	Millbrook silt loam, 0 to 2 percent slopes	26.61	16.56	129	87	1
3107A	Sawmill silty clay loam, 0 to 2 percent slopes, frequently flooded	23.22	14.45	139	63	3w
663B	Clare silt loam, 2 to 5 percent slopes	15.32	9.53	133	91	2e
679B	Blackberry silt loam, 2 to 5 percent slopes	14.32	8.91	141	90	2e
687C2	Penfield loam, 5 to 10 percent slopes, eroded	11.44	7.12	121	84	3e
152A	Drummer silty clay loam, 0 to 2 percent slopes	11.3	7.03	144	83	2w
198A	Elburn silt loam, 0 to 2 percent slopes	5.27	3.28	143	91	1
330A	Peotone silty clay loam, 0 to 2 percent slopes	2.62	1.63	123	63	3w
125A	Selma loam, 0 to 2 percent slopes	1.63	1.01	129	77	2w
TOTALS		160.68(*)	100%	131.83	83.93	2.03

(*) Total acres may differ in the second decimal compared to the sum of each acreage soil. This is due to a round error because we only show the acres of each soil with two decimal.

| Boundary 161.16 ac

SOIL CODE	SOIL DESCRIPTION	ACRES	%	PI	NCCPI	CAP
152A	Drummer silty clay loam, 0 to 2 percent slopes	100.65	62.45	144	83	2w
154A	Flanagan silt loam, 0 to 2 percent slopes	31.27	19.4	144	90	1
206A	Thorp silt loam, 0 to 2 percent slopes	18.08	11.22	126	89	2w
56B	Dana silt loam, 2 to 5 percent slopes	5.59	3.47	130	90	2e
679B	Blackberry silt loam, 2 to 5 percent slopes	3.74	2.32	141	90	2e
198A	Elburn silt loam, 0 to 2 percent slopes	1.83	1.14	143	91	1
TOTALS		161.16(*)	100%	141.41	85.52	1.79

(*) Total acres may differ in the second decimal compared to the sum of each acreage soil. This is due to a round error because we only show the acres of each soil with two decimal.

| Boundary 161.2 ac

SOIL CODE	SOIL DESCRIPTION	ACRES	%	PI	NCCPI	CAP
152A	Drummer silty clay loam, 0 to 2 percent slopes	67.26	41.72	144	83	2w
206A	Thorp silt loam, 0 to 2 percent slopes	33.93	21.05	126	89	2w
679B	Blackberry silt loam, 2 to 5 percent slopes	26.4	16.38	141	90	2e
198A	Elburn silt loam, 0 to 2 percent slopes	15.32	9.5	143	91	1
134B	Camden silt loam, 2 to 5 percent slopes	6.17	3.83	117	91	2e
219A	Millbrook silt loam, 0 to 2 percent slopes	5.06	3.14	129	87	1
570C2	Martinsville loam, 5 to 10 percent slopes, eroded	3.25	2.02	106	71	3e
330A	Peotone silty clay loam, 0 to 2 percent slopes	1.78	1.1	123	63	3w
154A	Flanagan silt loam, 0 to 2 percent slopes	1.29	0.8	144	90	1
3107A	Sawmill silty clay loam, 0 to 2 percent slopes, frequently flooded	0.74	0.46	139	63	3w
TOTALS		161.2(*)	100%	137.09	86.1	1.9

(*) Total acres may differ in the second decimal compared to the sum of each acreage soil. This is due to a round error because we only show the acres of each soil with two decimal.

| Boundary 160.34 ac

SOIL CODE	SOIL DESCRIPTION	ACRES	%	PI	NCCPI	CAP
206A	Thorp silt loam, 0 to 2 percent slopes	53.86	33.59	126	89	2w
3107A	Sawmill silty clay loam, 0 to 2 percent slopes, frequently flooded	26.85	16.75	139	63	3w
687C2	Penfield loam, 5 to 10 percent slopes, eroded	22.51	14.04	121	84	3e
679B	Blackberry silt loam, 2 to 5 percent slopes	17.21	10.73	141	90	2e
152A	Drummer silty clay loam, 0 to 2 percent slopes	16.08	10.03	144	83	2w
198A	Elburn silt loam, 0 to 2 percent slopes	12.13	7.57	143	91	1

663B	Clare silt loam, 2 to 5 percent slopes	6.35	3.96	133	91	2e
570C2	Martinsville loam, 5 to 10 percent slopes, eroded	3.89	2.43	106	71	3e
219A	Millbrook silt loam, 0 to 2 percent slopes	1.46	0.91	129	87	1
TOTALS		160.34(*)	100%	132.0	83.23	2.25

(*) Total acres may differ in the second decimal compared to the sum of each acreage soil. This is due to a round error because we only show the acres of each soil with two decimal.





Boundary

| Boundary 160.68 ac

SOIL CODE	SOIL DESCRIPTION	ACRES	%	PI	NCCPI	CAP
206A	Thorp silt loam, 0 to 2 percent slopes	48.95	30.46	126	89	2w
219A	Millbrook silt loam, 0 to 2 percent slopes	26.61	16.56	129	87	1
3107A	Sawmill silty clay loam, 0 to 2 percent slopes, frequently flooded	23.22	14.45	139	63	3w
663B	Clare silt loam, 2 to 5 percent slopes	15.32	9.53	133	91	2e
679B	Blackberry silt loam, 2 to 5 percent slopes	14.32	8.91	141	90	2e
687C2	Penfield loam, 5 to 10 percent slopes, eroded	11.44	7.12	121	84	3e
152A	Drummer silty clay loam, 0 to 2 percent slopes	11.3	7.03	144	83	2w
198A	Elburn silt loam, 0 to 2 percent slopes	5.27	3.28	143	91	1
330A	Peotone silty clay loam, 0 to 2 percent slopes	2.62	1.63	123	63	3w
125A	Selma loam, 0 to 2 percent slopes	1.63	1.01	129	77	2w
TOTALS		160.68(*)	100%	131.83	83.93	2.03







(*) Total acres may differ in the second decimal compared to the sum of each acreage soil. This is due to a round error because we only show the acres of each soil with two decimal.

Capability Legend

Increased Limitations and Hazards

Decreased Adaptability and Freedom of Choice Users

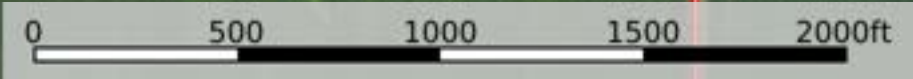
Land, Capability

								
	1	2	3	4	5	6	7	8
'Wild Life'	•	•	•	•	•	•	•	•
Forestry	•	•	•	•	•	•	•	
Limited	•	•	•	•	•	•	•	
Moderate	•	•	•	•	•	•		
Intense	•	•	•	•	•			
Limited	•	•	•	•				
Moderate	•	•	•					
Intense	•	•						
Very Intense	•							

Grazing Cultivation

(c) climatic limitations (e) susceptibility to erosion

(s) soil limitations within the rooting zone (w) excess of water



| Boundary 161.16 ac

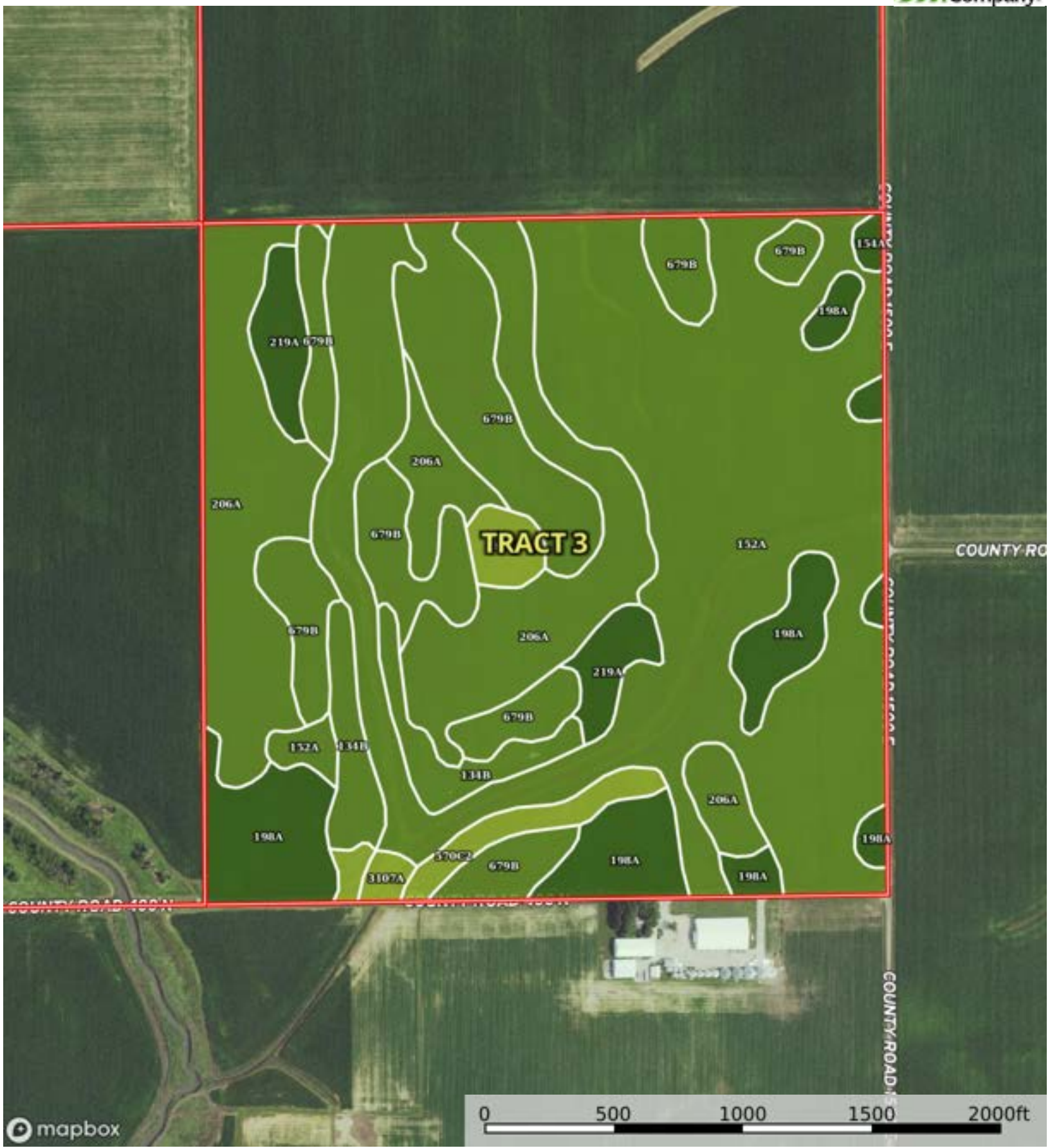
SOIL CODE	SOIL DESCRIPTION	ACRES	%	PI	NCCPI	CAP
152A	Drummer silty clay loam, 0 to 2 percent slopes	100.65	62.45	144	83	2w
154A	Flanagan silt loam, 0 to 2 percent slopes	31.27	19.4	144	90	1
206A	Thorp silt loam, 0 to 2 percent slopes	18.08	11.22	126	89	2w
56B	Dana silt loam, 2 to 5 percent slopes	5.59	3.47	130	90	2e
679B	Blackberry silt loam, 2 to 5 percent slopes	3.74	2.32	141	90	2e
198A	Elburn silt loam, 0 to 2 percent slopes	1.83	1.14	143	91	1
TOTALS		161.16(*)	100%	141.41	85.52	1.79

(*) Total acres may differ in the second decimal compared to the sum of each acreage soil. This is due to a round error because we only show the acres of each soil with two decimal.



L-2500065

Champaign County, Illinois, 640 AC +/-



mapbox

Boundary

| Boundary 161.2 ac

SOIL CODE	SOIL DESCRIPTION	ACRES	%	PI	NCCPI	CAP
152A	Drummer silty clay loam, 0 to 2 percent slopes	67.26	41.72	144	83	2w
206A	Thorp silt loam, 0 to 2 percent slopes	33.93	21.05	126	89	2w
679B	Blackberry silt loam, 2 to 5 percent slopes	26.4	16.38	141	90	2e
198A	Elburn silt loam, 0 to 2 percent slopes	15.32	9.5	143	91	1
134B	Camden silt loam, 2 to 5 percent slopes	6.17	3.83	117	91	2e
219A	Millbrook silt loam, 0 to 2 percent slopes	5.06	3.14	129	87	1
570C2	Martinsville loam, 5 to 10 percent slopes, eroded	3.25	2.02	106	71	3e
330A	Peotone silty clay loam, 0 to 2 percent slopes	1.78	1.1	123	63	3w
154A	Flanagan silt loam, 0 to 2 percent slopes	1.29	0.8	144	90	1
3107A	Sawmill silty clay loam, 0 to 2 percent slopes, frequently flooded	0.74	0.46	139	63	3w
TOTALS		161.2(*)	100%	137.0 9	86.1	1.9








(*) Total acres may differ in the second decimal compared to the sum of each acreage soil. This is due to a round error because we only show the acres of each soil with two decimal.

Capability Legend

Increased Limitations and Hazards

Decreased Adaptability and Freedom of Choice Users

Land, Capability

								
	1	2	3	4	5	6	7	8
'Wild Life'	•	•	•	•	•	•	•	•
Forestry	•	•	•	•	•	•	•	
Limited	•	•	•	•	•	•	•	
Moderate	•	•	•	•	•	•		
Intense	•	•	•	•	•			
Limited	•	•	•	•				
Moderate	•	•	•					
Intense	•	•						
Very Intense	•							

Grazing Cultivation

(c) climatic limitations (e) susceptibility to erosion

(s) soil limitations within the rooting zone (w) excess of water



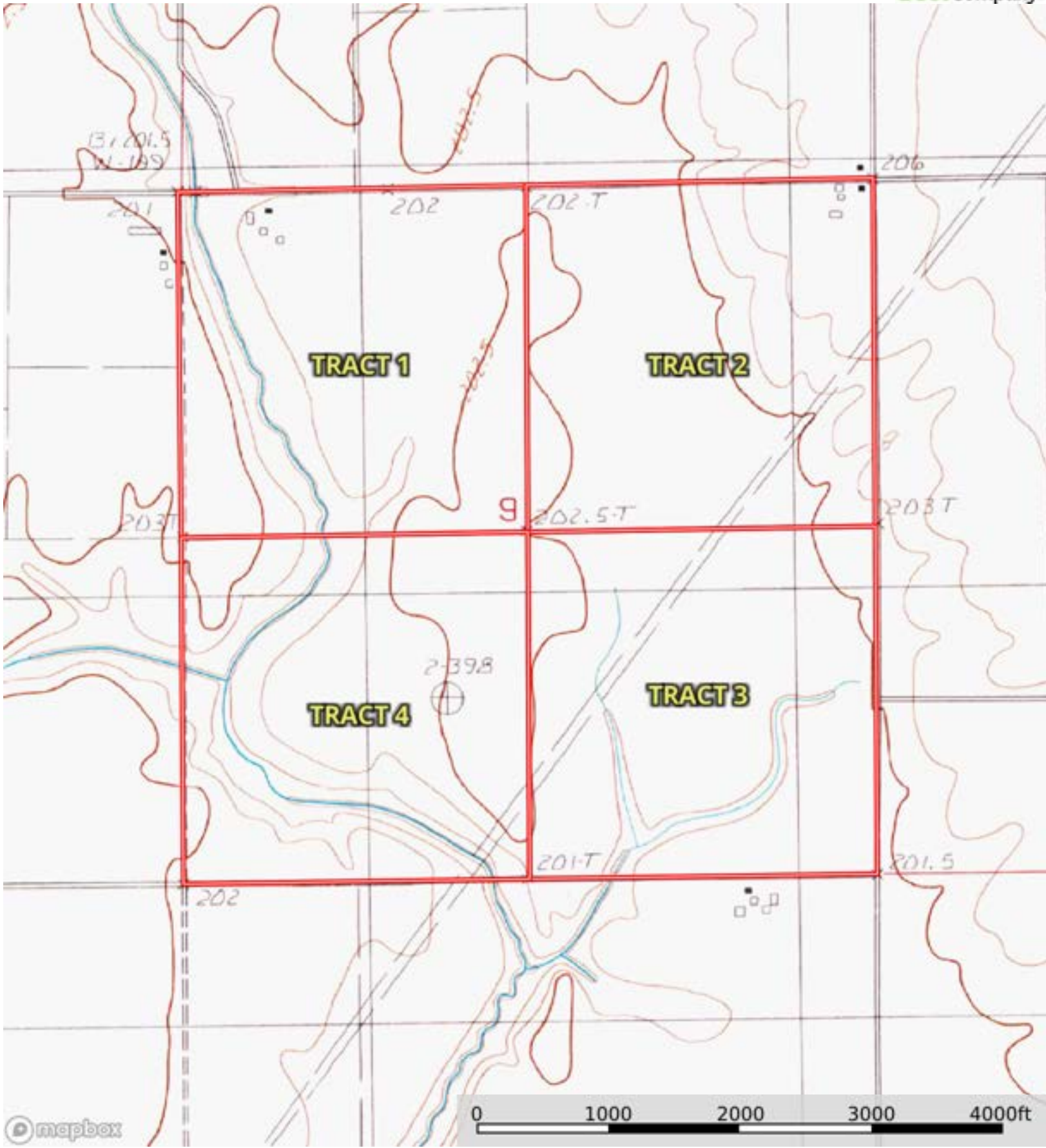
Boundary

| Boundary 160.34 ac

SOIL CODE	SOIL DESCRIPTION	ACRES	%	PI	NCCPI	CAP
206A	Thorp silt loam, 0 to 2 percent slopes	53.86	33.59	126	89	2w
3107A	Sawmill silty clay loam, 0 to 2 percent slopes, frequently flooded	26.85	16.75	139	63	3w
687C2	Penfield loam, 5 to 10 percent slopes, eroded	22.51	14.04	121	84	3e
679B	Blackberry silt loam, 2 to 5 percent slopes	17.21	10.73	141	90	2e
152A	Drummer silty clay loam, 0 to 2 percent slopes	16.08	10.03	144	83	2w
198A	Elburn silt loam, 0 to 2 percent slopes	12.13	7.57	143	91	1
663B	Clare silt loam, 2 to 5 percent slopes	6.35	3.96	133	91	2e
570C2	Martinsville loam, 5 to 10 percent slopes, eroded	3.89	2.43	106	71	3e
219A	Millbrook silt loam, 0 to 2 percent slopes	1.46	0.91	129	87	1
TOTALS		160.34(*)	100%	132.0	83.23	2.25

(*) Total acres may differ in the second decimal compared to the sum of each acreage soil. This is due to a round error because we only show the acres of each soil with two decimal.





Boundary