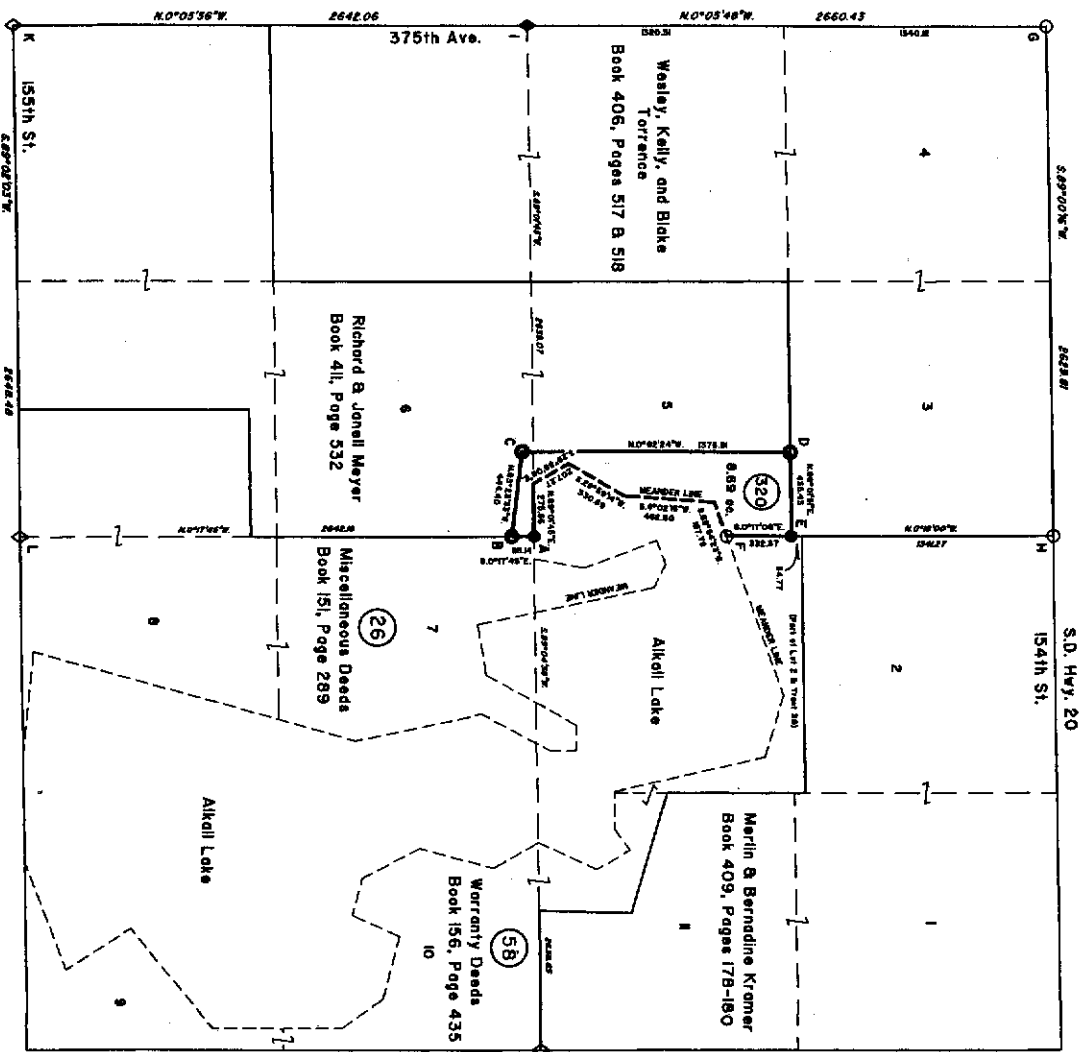


SPINK COUNTY W.A. No. 320
in Section 5, Township 119 North, Range 65 West, of the 5th Principal Meridian
Spink County, South Dakota



Boundary Description—Tract 320

A parcel of land located in government lots 5 and 6, section 5, T. 19 N., R. 65 W. of the 5th P.M., in Spink County, South Dakota, described as follows:
Beginning at the center quarter corner of said section 5, monumented with an aluminum post, 2 1/2 in. diam., 20 in. long, with 3 1/4 in. diam. U.S. Fish and Wildlife Service aluminum cap dated 2009;
Thence S. 07°14' E., along the 1/4-3/4 corner line of section 5, a distance of 1824 ft. to the southeastern corner of said parcel, monumented with an aluminum post, 1 in. diam., 24 in. long, with 3 1/4 in. diam. U.S. Fish and Wildlife Service aluminum cap dated 2009;
Thence N. 83°23'33" W., along a line-of-sight fence line and the eastern prairie fence line, a distance of 444.40 ft. to a corner of fence adjoining section 5 and section 6, marked with a 2 in. diam. U.S. Fish and Wildlife Service brass washer on top of the corner post;
Thence N. 07°01'42" W., along a barbed-wire fence line and the westerly prairie fence line, a distance of 1376.26 ft. to a point on the North line of government lot 5, monumented with an aluminum post, 1 in. diam., 24 in. long, with 3 1/4 in. diam. U.S. Fish and Wildlife Service aluminum cap dated 2009;
Thence N. 89°00' E., along the said North line of government lot 5, a distance of 435.43 ft. to the center-south 1/8 corner of said section 5, monumented with an aluminum post, 1 in. diam., 24 in. long, with 3 1/4 in. diam. U.S. Fish and Wildlife Service aluminum cap, dated 2009;
Thence S. 07°00' E., along the North-south section line of section 5, a distance of 332.27 ft. to the Special Boundary Corner on the N. side of a standard lot, monumented with a 1 1/4 in. diam. iron pin;
Thence along the adjacent boundary of the lake, the following 4 courses for average reduction only, the true boundary being the mean low water line of the lake:
S. 48°54'23" W., a distance of 187.79 ft.;
S. 4°02'05" W., a distance of 482.20 ft.;
S. 28°53'42" W., a distance of 330.89 ft.;
S. 28°58'00" E., a distance of 309.27 ft. to the E-W corner line of said section 5;
Thence N. 89°00' E., along said E-W corner line, a distance of 272.65 ft. to the point of beginning, containing 8.89 acres, more or less,
Beginning repeated between the mean grounds.

HISTORY OF SURVEYS

The North, South and West boundaries of the township were surveyed in August, 1879, by George J. Austin under contract to the General Land Office. Under the same contract, Mr. Austin surveyed the subdivision lines and monuments, also in August, 1879. Many of the corners in this area have been perpetuated by previous surveys, with cut pink quartzite stones. No record of this work has been found.
In 1876 the U.S. Fish and Wildlife Service retraced section 5, including the boundaries of U.S. Tract 28 and U.S. Tract 58, as shown herein.
In 1975-1977, the Bureau of Land Management conducted a detailed retracing of a portion of the subdivided West, including the East, South and West boundaries of section 5.
The South line of the SE quarter of section 5 was retraced by the U.S. Fish and Wildlife Service in 1977, and a corner reestablished in Spink County.

BASIS OF BEARINGS

The bearings and distances of this survey are based on NAD 83 (GCS NAD 83) (GPO: 2002-500-200). Measurements were made using Global Positioning System (GPS) receivers. The bearings were measured using a total station. The distances were measured using a steel tape. The bearings and distances are given in feet. Distances are horizontal ground distances in feet, at approximate mean elevation of 1500 feet.

LEGEND

- ◆ BLM or cut quartzite monument
- ◊ Quartzite corner—remonumented this survey
- USFWS corner set by previous survey
- USFWS corner remonumented this survey
- ⊙ Corner established and monumented by this survey
- J Reference ID for coordinates and descriptions (see Sheet 2 of 3)
- 10 Government Lot Number
- 58 U.S. Fish & Wildlife Service Tract number

