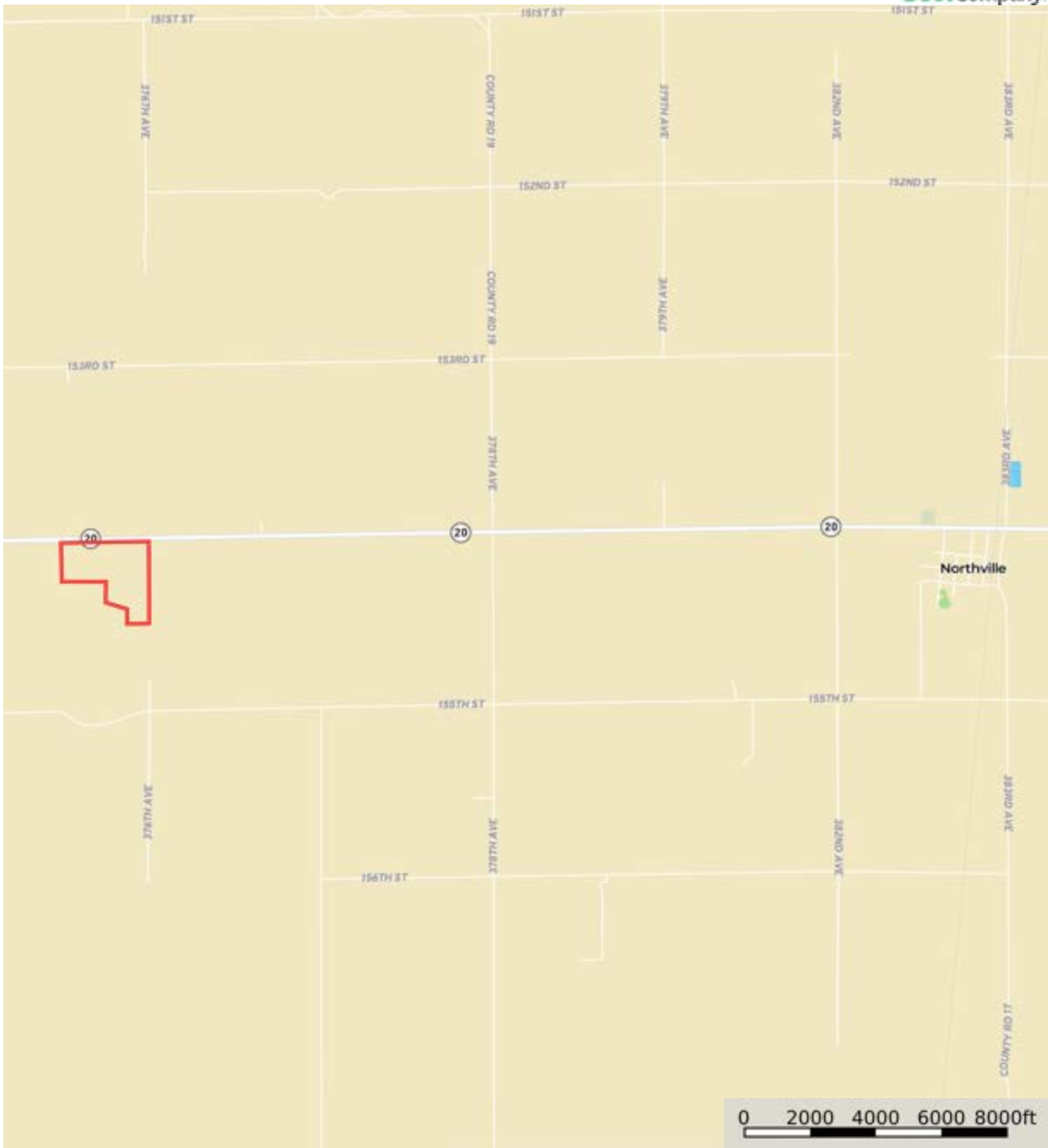


L-2500068

Spink County, South Dakota, 107.66 AC +/-



Boundary



The information contained herein was obtained from sources deemed to be reliable. Land ID™ Services makes no warranties or guarantees as to the completeness or accuracy thereof.



Boundary



L-2500068

Spink County, South Dakota, 107.66 AC +/-



Boundary



The information contained herein was obtained from sources deemed to be reliable. Land id™ Services makes no warranties or guarantees as to the completeness or accuracy thereof.



| Boundary 105.4 ac

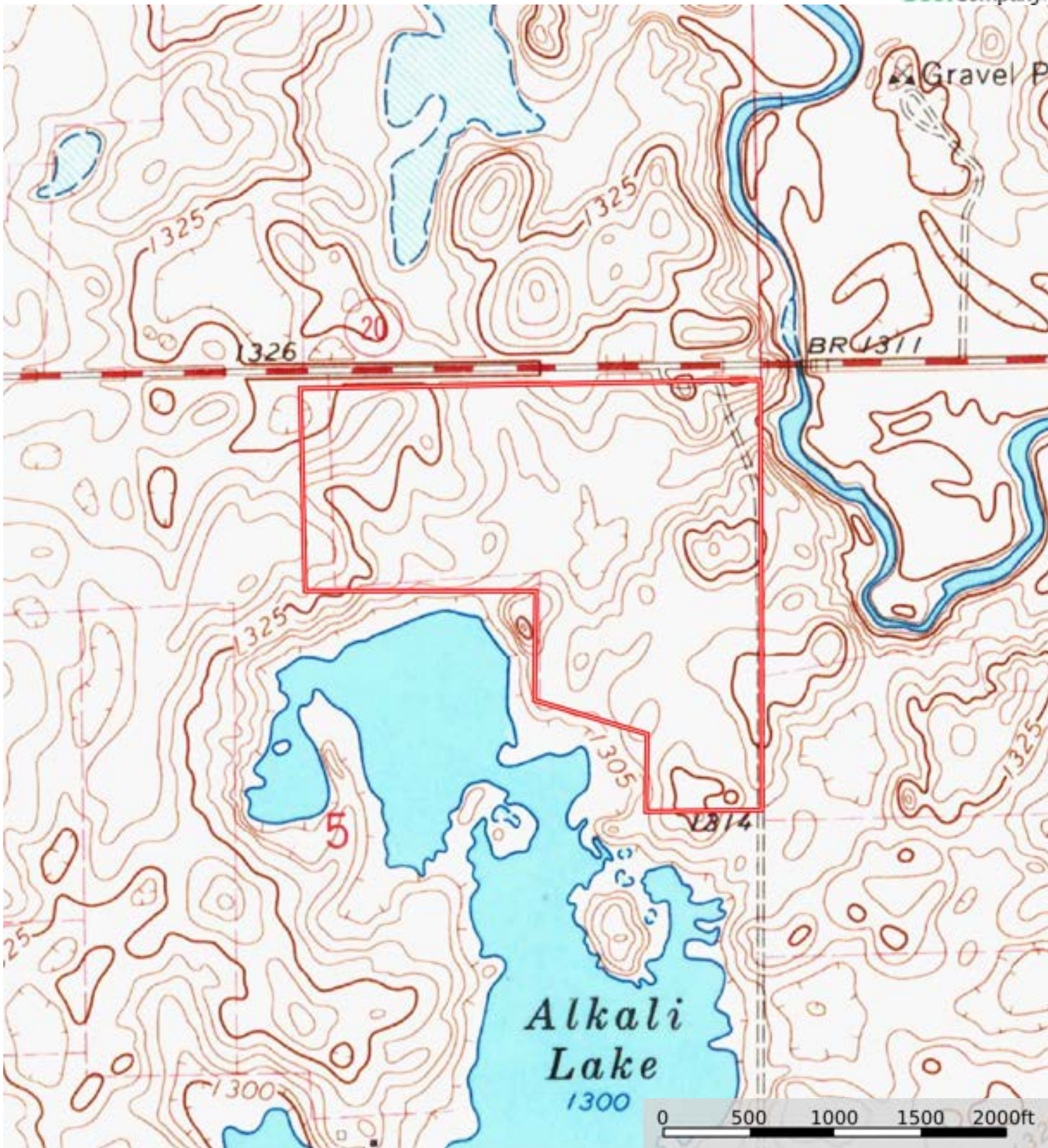
SOIL CODE	SOIL DESCRIPTION	ACRES	%	CPI	NCCPI	CAP
C168C	Max-Zahl-Arnegard loams, 3 to 9 percent slopes	22.71	21.55	65	50	3e
C168B	Max-Arnegard-Zahl loams, 0 to 6 percent slopes	21.82	20.7	78	51	2e
C020A	Heil silt loam, 0 to 1 percent slopes	19.81	18.8	21	29	6s
C661A	Niobell-Noonan loams, 0 to 3 percent slopes	15.33	14.54	63	41	3s
C153E	Zahl-Max loams, 15 to 25 percent slopes	13.0	12.33	31	37	7e
C667B	Williams-Niobell loams, 3 to 6 percent slopes	11.99	11.38	77	48	2e
C002A	Tonka silt loam, 0 to 1 percent slopes	0.7	0.66	45	45	4w
C491A	Straw-Fluvaquents channeled, complex, 0 to 2 percent slopes, frequently flooded	0.04	0.04	42	28	6w
TOTALS		105.4(*)	100%	56.16	43.08	3.74

(\*) Total acres may differ in the second decimal compared to the sum of each acreage soil. This is due to a round error because we only show the acres of each soil with two decimal.



L-2500068

Spink County, South Dakota, 107.66 AC +/-



Boundary



The information contained herein was obtained from sources deemed to be reliable. Land id™ Services makes no warranties or guarantees as to the completeness or accuracy thereof.