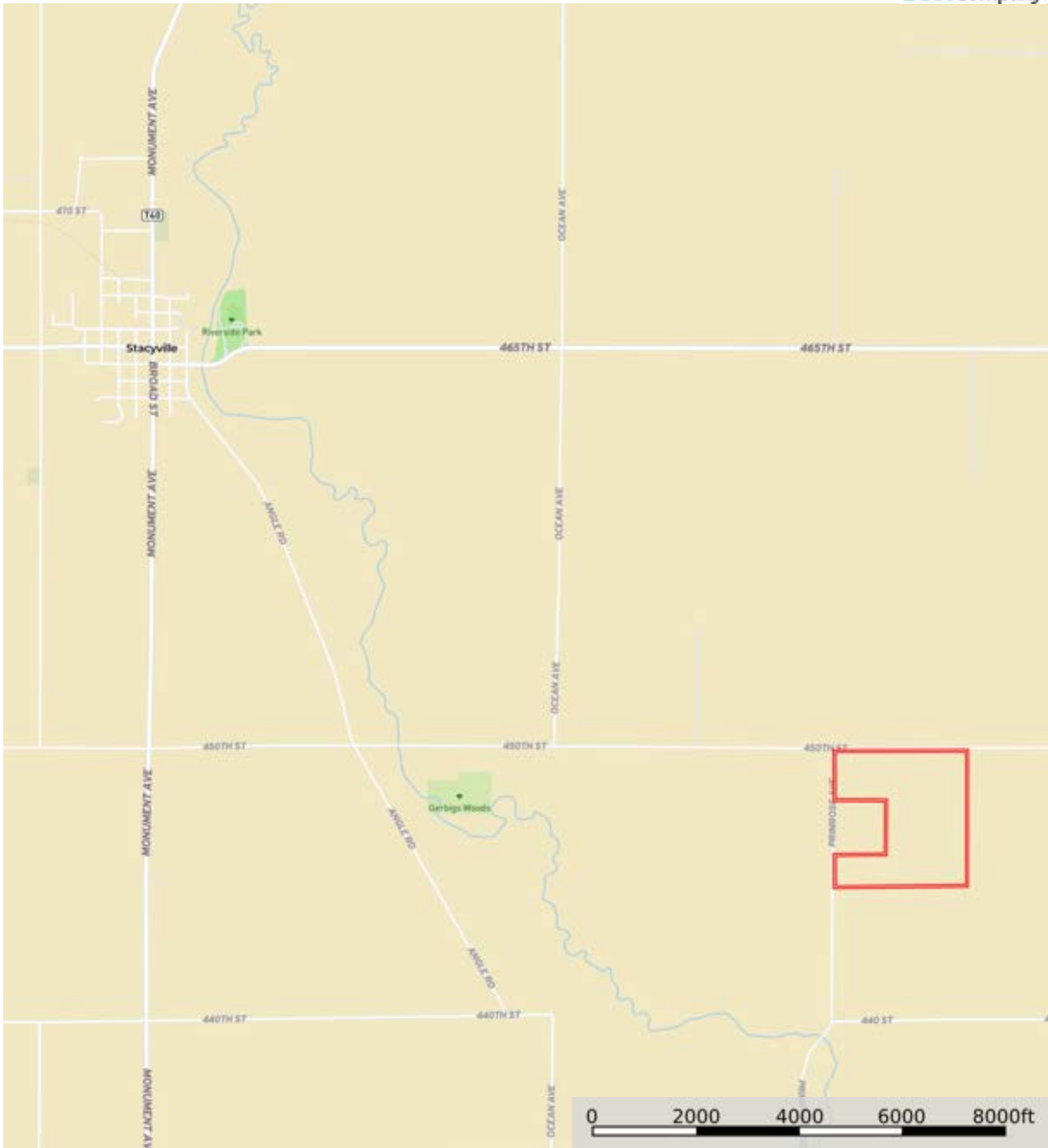


L-2500077

Mitchell County, Iowa, 135.12 AC +/-



Boundary

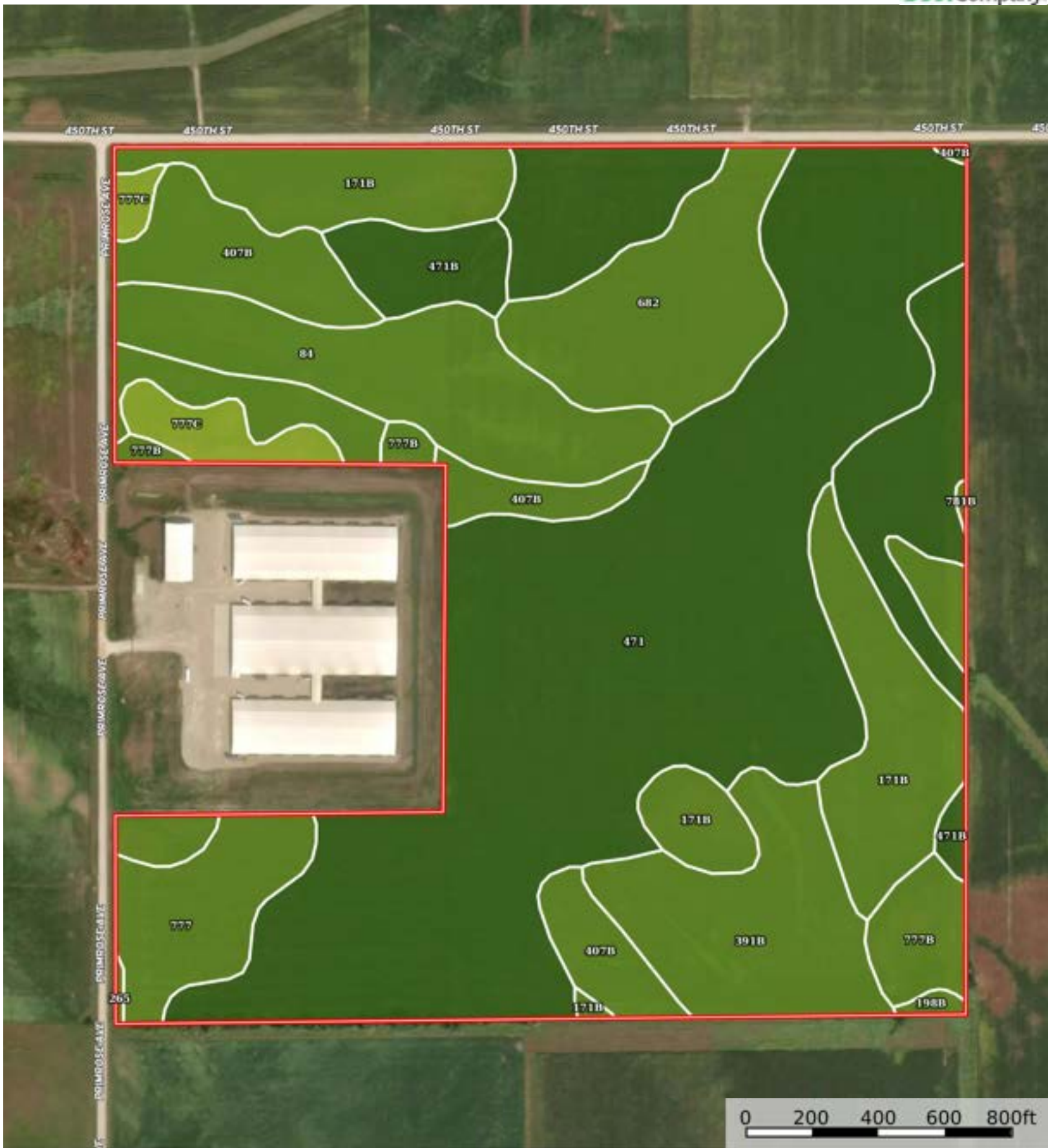


The information contained herein was obtained from sources deemed to be reliable. Land ID™ Services makes no warranties or guarantees as to the completeness or accuracy thereof.



Boundary





Boundary



| Boundary 131.46 ac

SOIL CODE	SOIL DESCRIPTION	ACRES	%	CSR2	CPI	NCCPI	CAP
471	Oran loam, 0 to 2 percent slopes	55.67	42.34	79.0	0	81	1
171B	Bassett loam, 2 to 5 percent slopes	14.19	10.79	85.0	0	87	2e
407B	Schley silt loam, 1 to 4 percent slopes	10.91	8.3	81.0	0	90	2w
84	Clyde silty clay loam, 0 to 3 percent slopes	10.3	7.83	88.0	0	91	2w
391B	Clyde-Floyd complex, 1 to 4 percent slopes	10.03	7.63	87.0	0	89	2w
682	Maxfield silt loam, 0 to 2 percent slopes	9.13	6.94	83.0	0	78	2w
471B	Oran loam, 2 to 5 percent slopes	9.01	6.85	74.0	0	80	1
777	Wapsie loam, 0 to 2 percent slopes	5.15	3.92	55.0	0	64	2s
777B	Wapsie loam, 2 to 5 percent slopes	4.03	3.07	50.0	0	64	2e
777C	Wapsie loam, 5 to 9 percent slopes	2.57	1.95	43.0	0	63	3e
198B	Floyd loam, 1 to 4 percent slopes	0.27	0.21	89.0	0	88	2w
265	Bixby loam, 0 to 2 percent slopes	0.11	0.08	45.0	0	72	2s
781B	Lourdes loam, 2 to 5 percent slopes	0.09	0.07	68.0	0	78	2e
TOTALS		131.46(*)	100%	78.5	-	81.96	1.53

(\*) Total acres may differ in the second decimal compared to the sum of each acreage soil. This is due to a round error because we only show the acres of each soil with two decimal.

## Capability Legend

Increased Limitations and Hazards

Decreased Adaptability and Freedom of Choice Users

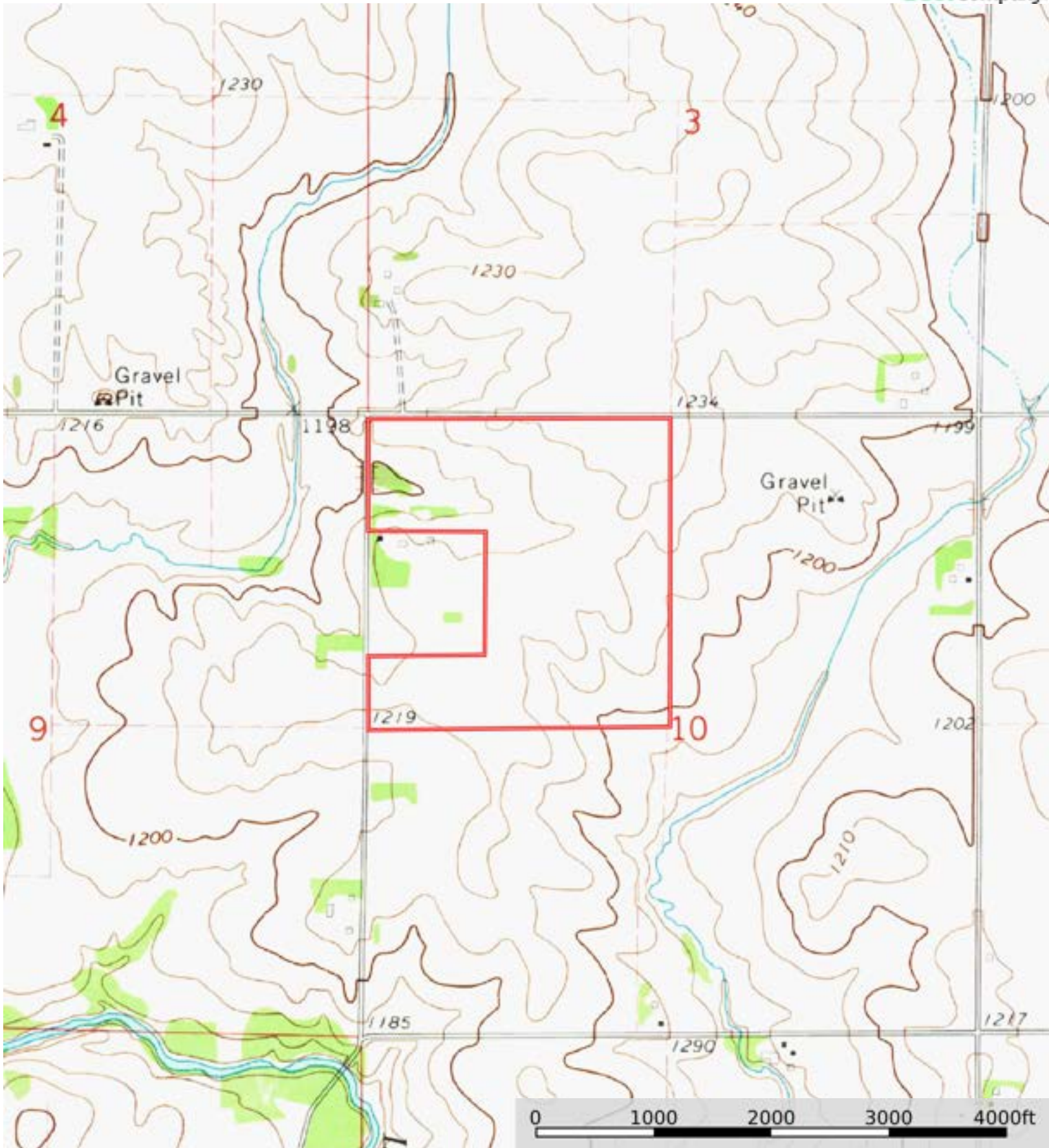
Land, Capability

								
	1	2	3	4	5	6	7	8
'Wild Life'	•	•	•	•	•	•	•	•
Forestry	•	•	•	•	•	•	•	
Limited	•	•	•	•	•	•	•	
Moderate	•	•	•	•	•	•		
Intense	•	•	•	•	•			
Limited	•	•	•	•				
Moderate	•	•	•					
Intense	•	•						
Very Intense	•							

### Grazing Cultivation

(c) climatic limitations (e) susceptibility to erosion

(s) soil limitations within the rooting zone (w) excess of water



Boundary