

Boundary



Boundary



Boundary

|  All Polygons 144.3 ac

SOIL CODE	SOIL DESCRIPTION	ACRES	%	CPI	NCCPI	CAP
JaB	Jansen loam, 2 to 6 percent slopes	68.34	47.36	53	43	3e
JbA	Jansen-Brocksburg loams, 0 to 2 percent slopes	30.85	21.38	61	57	2s
MeC	Meadin sandy loam, 3 to 9 percent slopes	26.43	18.31	17	37	6s
RaB	Ree loam, 3 to 6 percent slopes	15.14	10.49	79	52	2e
JaC	Jansen loam, 6 to 9 percent slopes	2.31	1.6	38	55	4e
HoD	Holt fine sandy loam, 9 to 15 percent slopes	1.23	0.85	31	38	6e
TOTALS		144.3(*)	100%	50.41	45.98	3.27

(*) Total acres may differ in the second decimal compared to the sum of each acreage soil. This is due to a round error because we only show the acres of each soil with two decimal.

| Boundary 57.02 ac

SOIL CODE	SOIL DESCRIPTION	ACRES	%	CPI	NCCPI	CAP
JbA	Jansen-Brocksburg loams, 0 to 2 percent slopes	30.85	54.1	61	57	2s
JaB	Jansen loam, 2 to 6 percent slopes	16.68	29.25	53	43	3e
RaB	Ree loam, 3 to 6 percent slopes	7.72	13.54	79	52	2e
MeC	Meadin sandy loam, 3 to 9 percent slopes	1.77	3.1	17	37	6s
TOTALS		57.02(*)	100%	59.73	51.61	2.42

(*) Total acres may differ in the second decimal compared to the sum of each acreage soil. This is due to a round error because we only show the acres of each soil with two decimal.

| Boundary 87.28 ac

SOIL CODE	SOIL DESCRIPTION	ACRES	%	CPI	NCCPI	CAP
JaB	Jansen loam, 2 to 6 percent slopes	51.66	59.18	53	43	3e
MeC	Meadin sandy loam, 3 to 9 percent slopes	24.66	28.25	17	37	6s
RaB	Ree loam, 3 to 6 percent slopes	7.42	8.5	79	52	2e
JaC	Jansen loam, 6 to 9 percent slopes	2.31	2.65	38	55	4e
HoD	Holt fine sandy loam, 9 to 15 percent slopes	1.23	1.41	31	38	6e
TOTALS		87.28(*)	100%	44.33	42.31	3.83






(*) Total acres may differ in the second decimal compared to the sum of each acreage soil. This is due to a round error because we only show the acres of each soil with two decimal.

Capability Legend

Increased Limitations and Hazards

Decreased Adaptability and Freedom of Choice Users

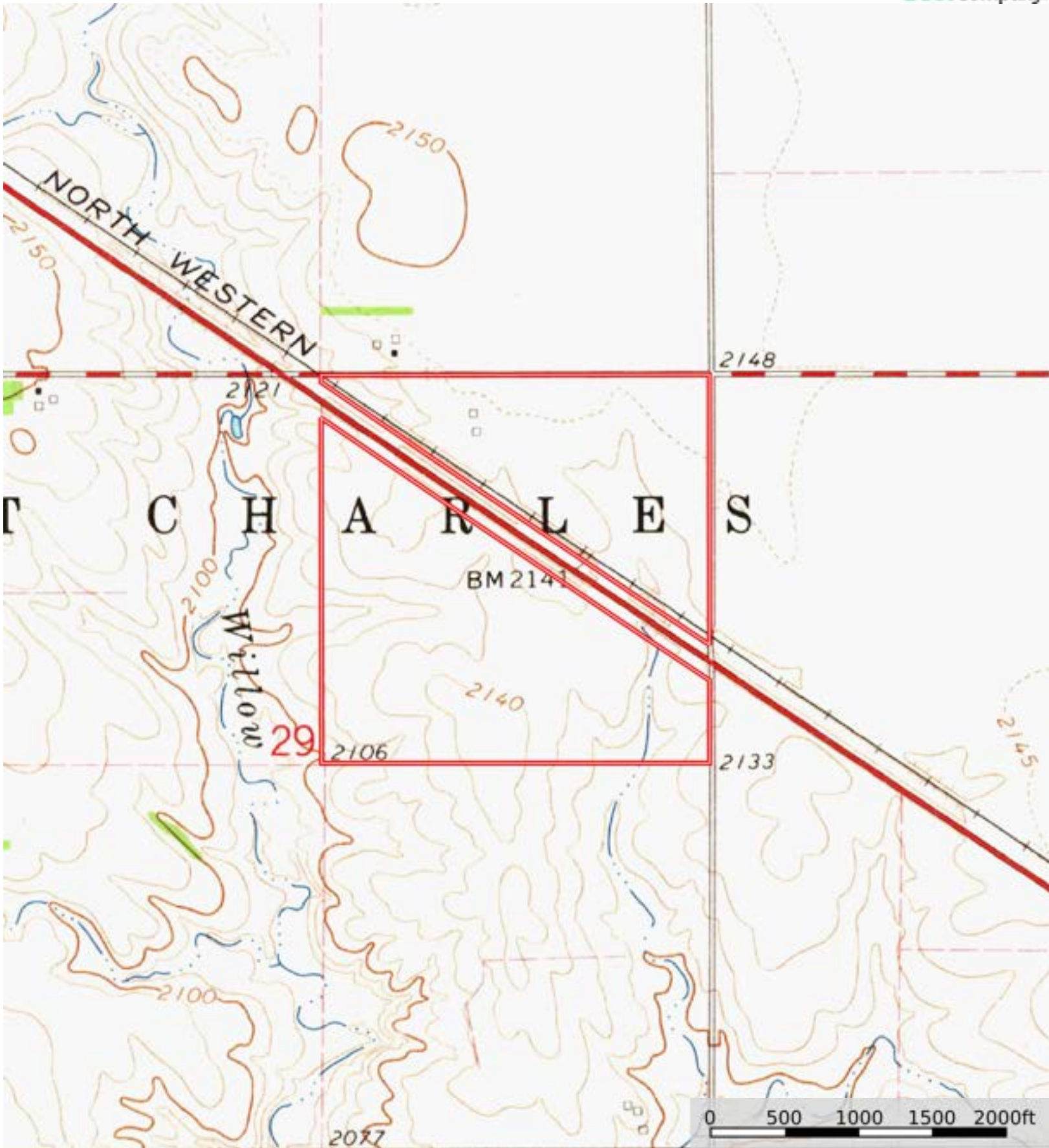
Land, Capability

								
	1	2	3	4	5	6	7	8
'Wild Life'	•	•	•	•	•	•	•	•
Forestry	•	•	•	•	•	•	•	
Limited	•	•	•	•	•	•	•	
Moderate	•	•	•	•	•	•		
Intense	•	•	•	•	•			
Limited	•	•	•	•				
Moderate	•	•	•					
Intense	•	•						
Very Intense	•							

Grazing Cultivation

(c) climatic limitations (e) susceptibility to erosion

(s) soil limitations within the rooting zone (w) excess of water



Boundary

