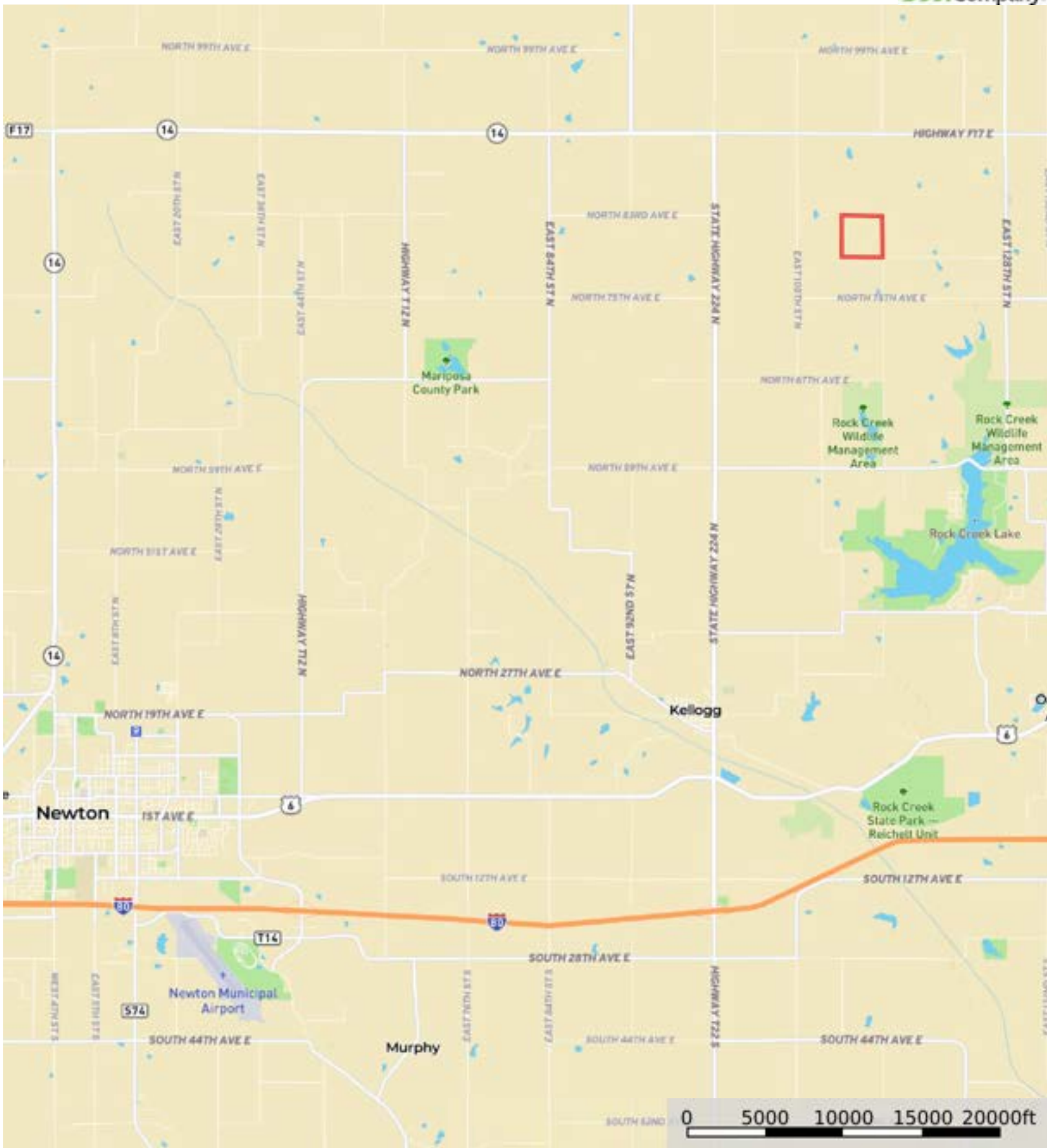


L-2500101

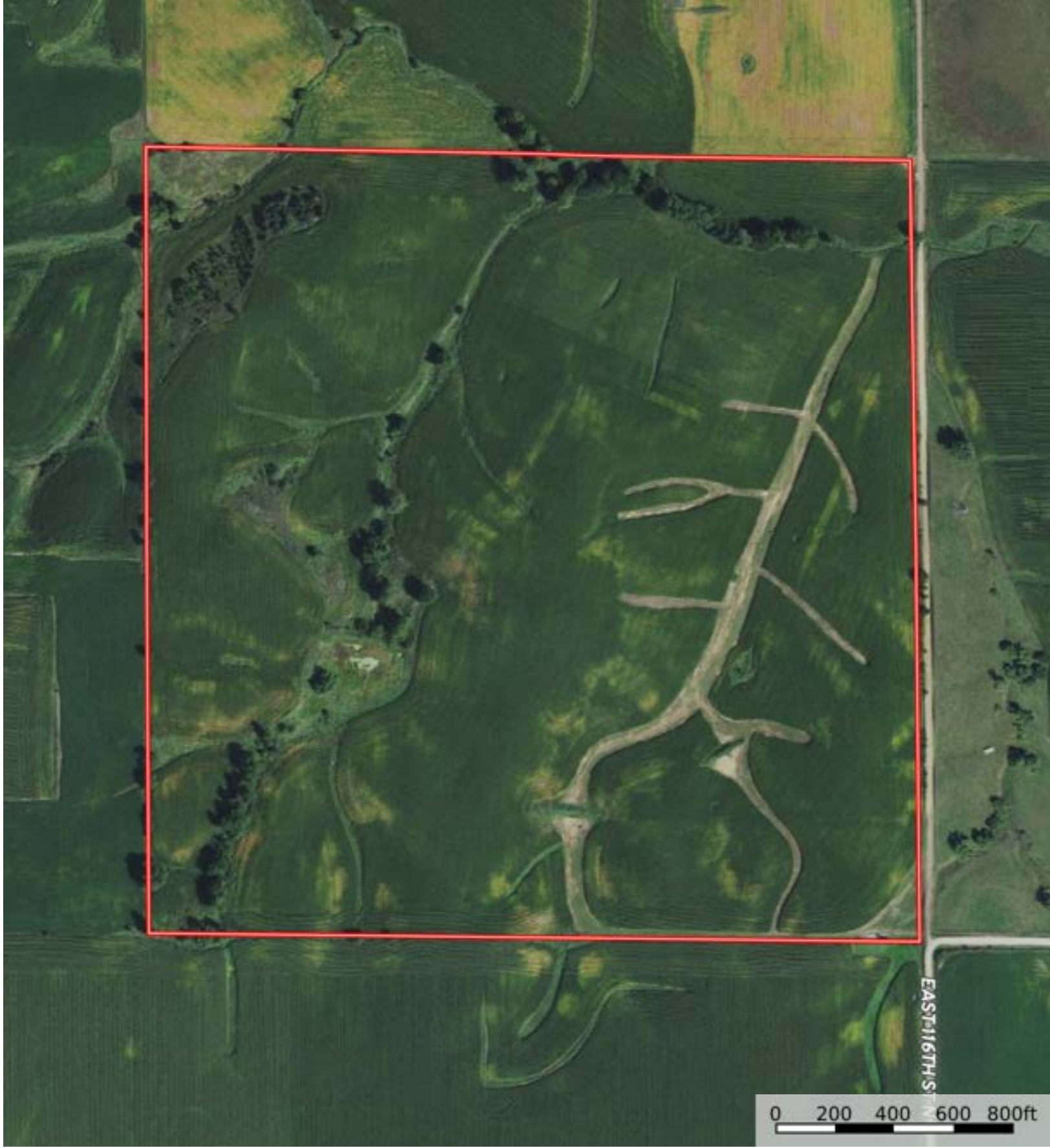
Jasper County, Iowa, 160 AC +/-



Boundary



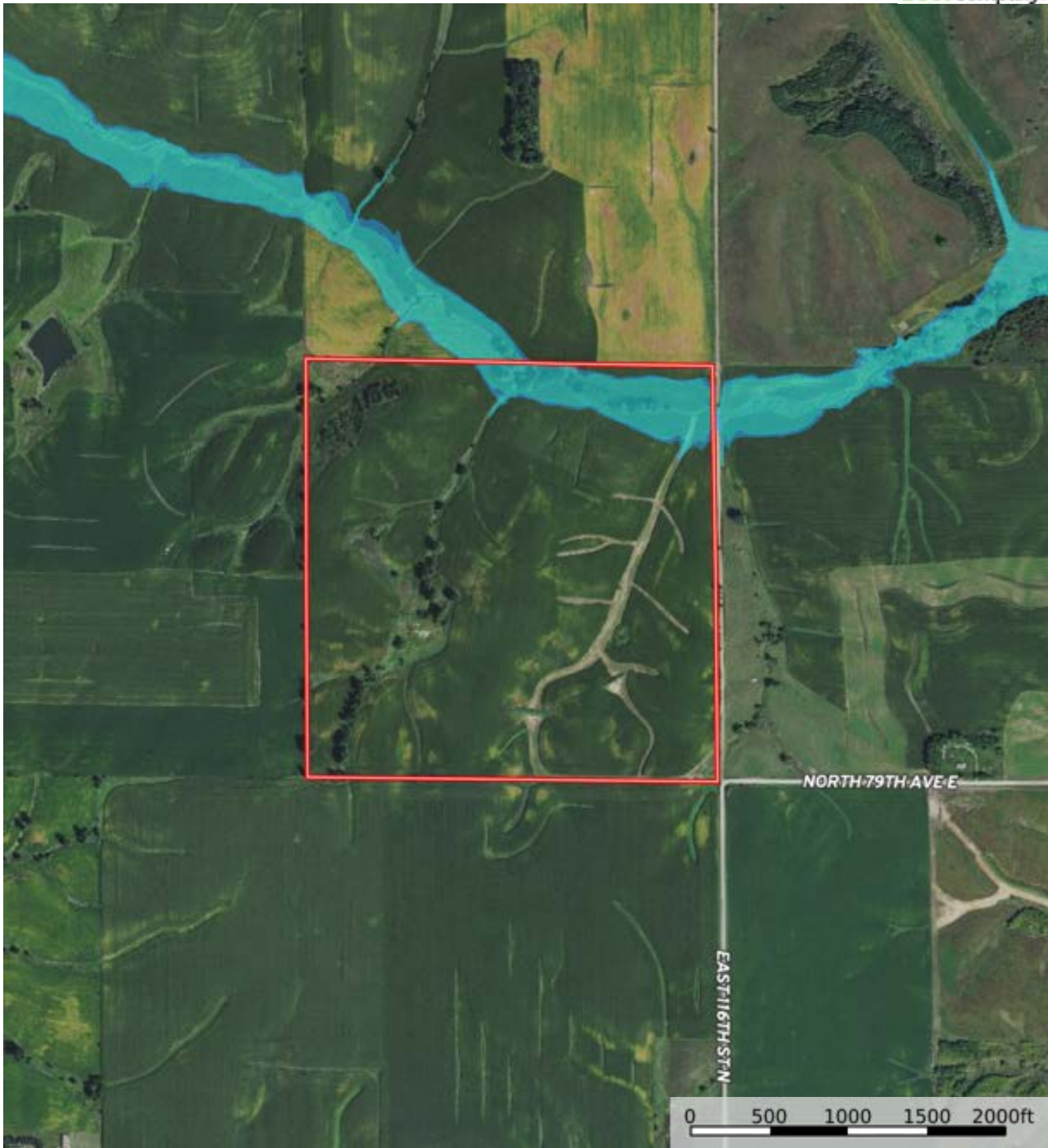
The information contained herein was obtained from sources deemed to be reliable. Land id™ Services makes no warranties or guarantees as to the completeness or accuracy thereof.



Boundary

L-2500101

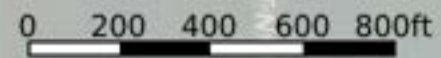
Jasper County, Iowa, 160 AC +/-




- Boundary
- 100 Year Floodplain
- 500 Year Floodplain
- Floodway
- Special
- Unmapped/ Not Included



The information contained herein was obtained from sources deemed to be reliable. Land id™ Services makes no warranties or guarantees as to the completeness or accuracy thereof.



Boundary

|  137.52 ac

SOIL CODE	SOIL DESCRIPTION	ACRES	%	CSR2	CPI	NCCPI	CAP
24E2	Shelby loam, 14 to 18 percent slopes, moderately eroded	24.68	17.95	37.0	0	75	4e
24F2	Shelby loam, 18 to 25 percent slopes, moderately eroded	22.51	16.37	21.0	0	60	6e
5B	Ackmore-Colo complex, 2 to 5 percent slopes	18.71	13.6	77.0	0	88	2w
20C2	Killduff silty clay loam, 5 to 9 percent slopes, eroded	16.02	11.65	81.0	0	89	3e
93D2	Shelby-Adair complex, 9 to 14 percent slopes, moderately eroded	14.82	10.78	35.0	0	72	3e
120D2	Tama silty clay loam, 9 to 14 percent slopes, eroded	14.37	10.45	62.0	0	84	3e
192D2	Adair clay loam, 9 to 14 percent slopes, moderately eroded	8.85	6.43	10.0	0	60	4e
428B	Ely silty clay loam, 2 to 5 percent slopes	7.78	5.66	88.0	0	91	2e
430	Ackmore silt loam, 0 to 2 percent slopes, occasionally flooded	4.99	3.63	70.0	0	91	2w
93E2	Shelby-Adair complex, 14 to 18 percent slopes, moderately erode	3.98	2.89	30.0	0	70	4e
133	Colo silty clay loam, 0 to 2 percent slopes, occasionally flooded	0.75	0.55	78.0	0	78	2w
120B	Tama silty clay loam, 2 to 5 percent slopes	0.06	0.04	95.0	0	96	2e
TOTALS		137.52(*)	100%	49.73	-	76.96	3.53







(\*) Total acres may differ in the second decimal compared to the sum of each acreage soil. This is due to a round error because we only show the acres of each soil with two decimal.

## Capability Legend

Increased Limitations and Hazards

Decreased Adaptability and Freedom of Choice Users

Land, Capability

								
	1	2	3	4	5	6	7	8
'Wild Life'	•	•	•	•	•	•	•	•
Forestry	•	•	•	•	•	•	•	
Limited	•	•	•	•	•	•	•	
Moderate	•	•	•	•	•	•		
Intense	•	•	•	•	•			
Limited	•	•	•	•				
Moderate	•	•	•					
Intense	•	•						
Very Intense	•							

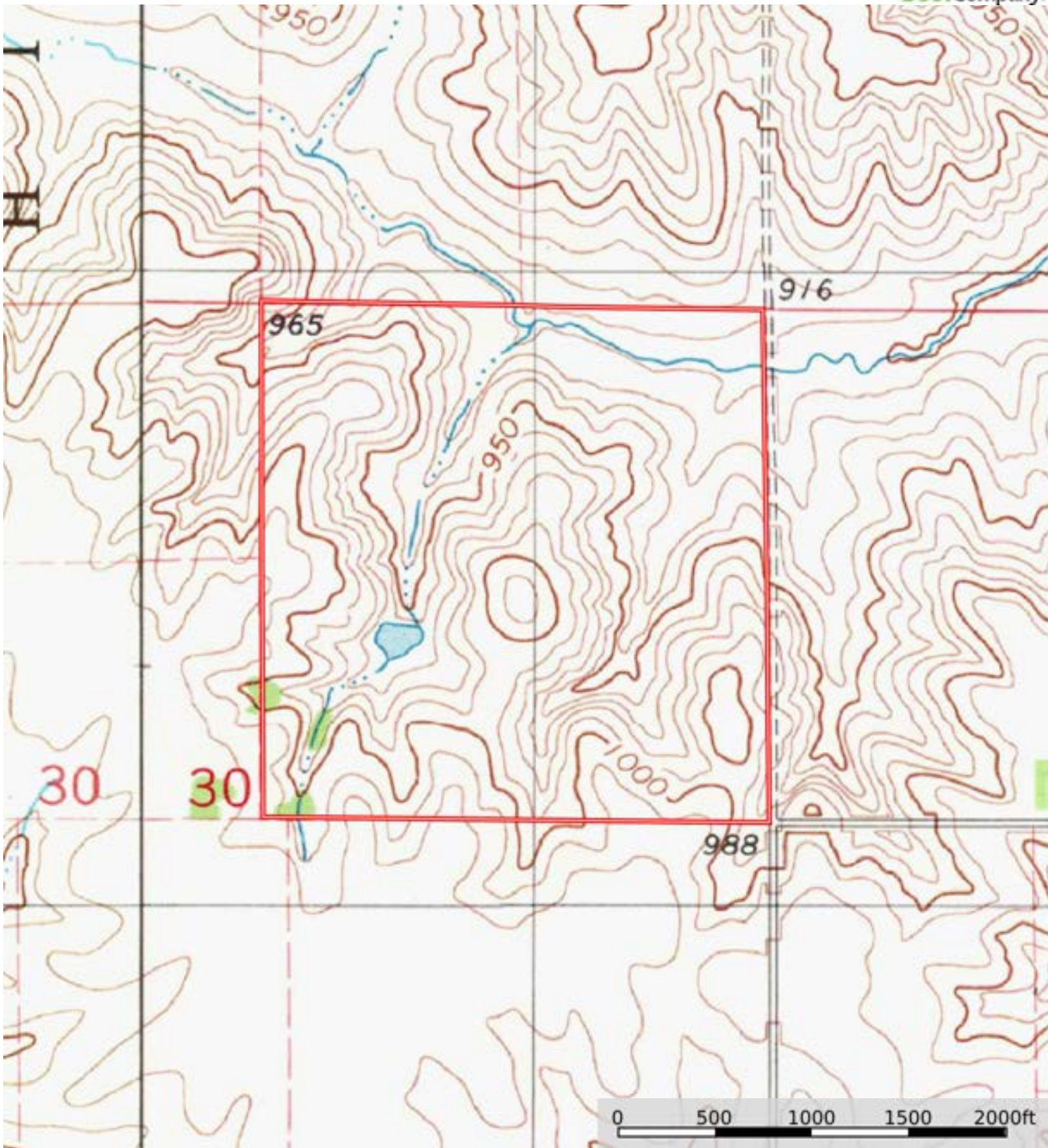
### Grazing Cultivation

(c) climatic limitations (e) susceptibility to erosion

(s) soil limitations within the rooting zone (w) excess of water

L-2500101

Jasper County, Iowa, 160 AC +/-



Boundary



The information contained herein was obtained from sources deemed to be reliable. Land ID™ Services makes no warranties or guarantees as to the completeness or accuracy thereof.