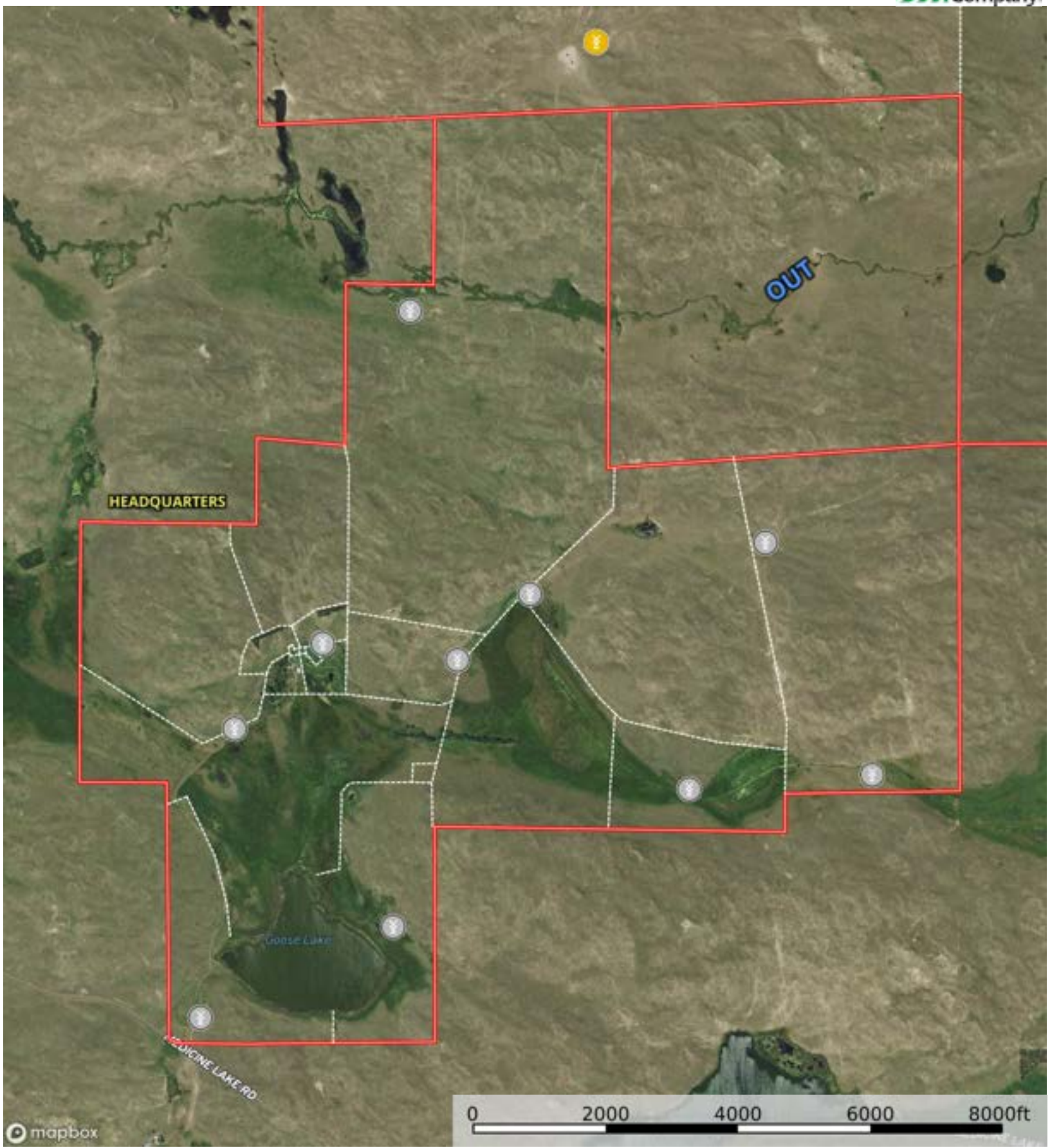
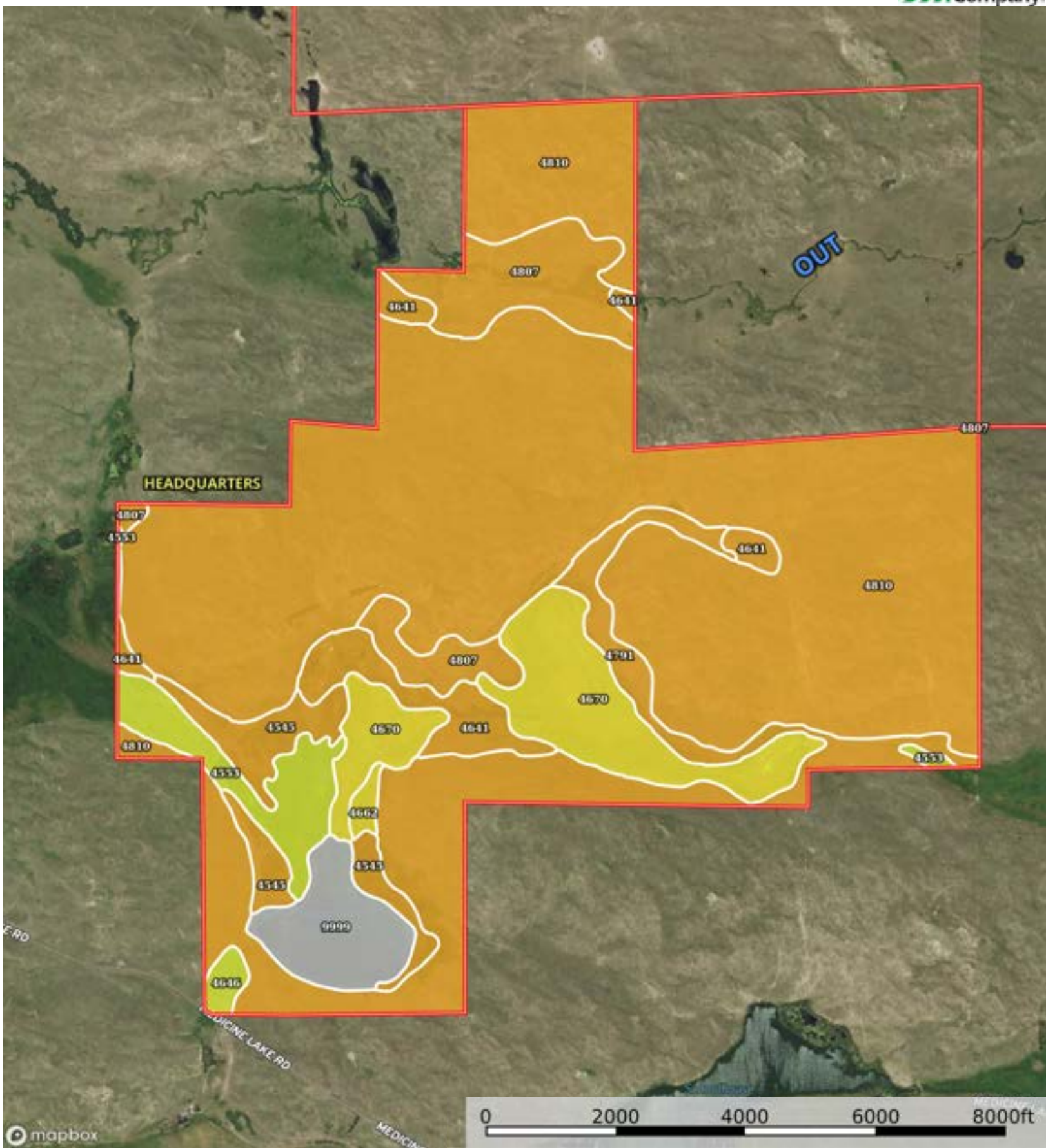




Boundary



Cherry County, Nebraska, 4141.3 AC +/-



The information contained herein was obtained from sources deemed to be reliable.

Land id™ Services makes no warranties or guarantees as to the completeness or accuracy thereof.

| Boundary 2319.79 ac

SOIL CODE	SOIL DESCRIPTION	ACRES	%	CPI	NCCPI	CAP
4810	Valentine fine sand, rolling and hilly, 9 to 60 percent slopes	1572.96	67.81	9	17	6e
4670	Loup mucky peat	176.14	7.59	6	4	5w
4807	Valentine fine sand, rolling, 9 to 24 percent slopes	136.61	5.89	11	23	6e
4641	lpage fine sand, 0 to 3 percent slopes	87.34	3.76	53	25	6e
4791	Valentine fine sand, 3 to 9 percent slopes	84.98	3.66	19	28	6e
4545	Els-lpage fine sands, 0 to 3 percent slopes	83.09	3.58	38	26	6w
4553	Elsmere loamy fine sand, 0 to 3 percent slopes	79.68	3.43	64	35	4w
9999	Water	79.39	3.42	0	-	-
4646	lpage loamy fine sand, 0 to 3 percent slopes	11.5	0.5	54	31	4e
4662	Loup fine sandy loam, 0 to 1 percent slopes	8.1	0.35	30	26	5w
TOTALS		2319.79(*)	100%	13.83	17.53	5.84








(*) Total acres may differ in the second decimal compared to the sum of each acreage soil. This is due to a round error because we only show the acres of each soil with two decimal.

Capability Legend

Increased Limitations and Hazards

Decreased Adaptability and Freedom of Choice Users

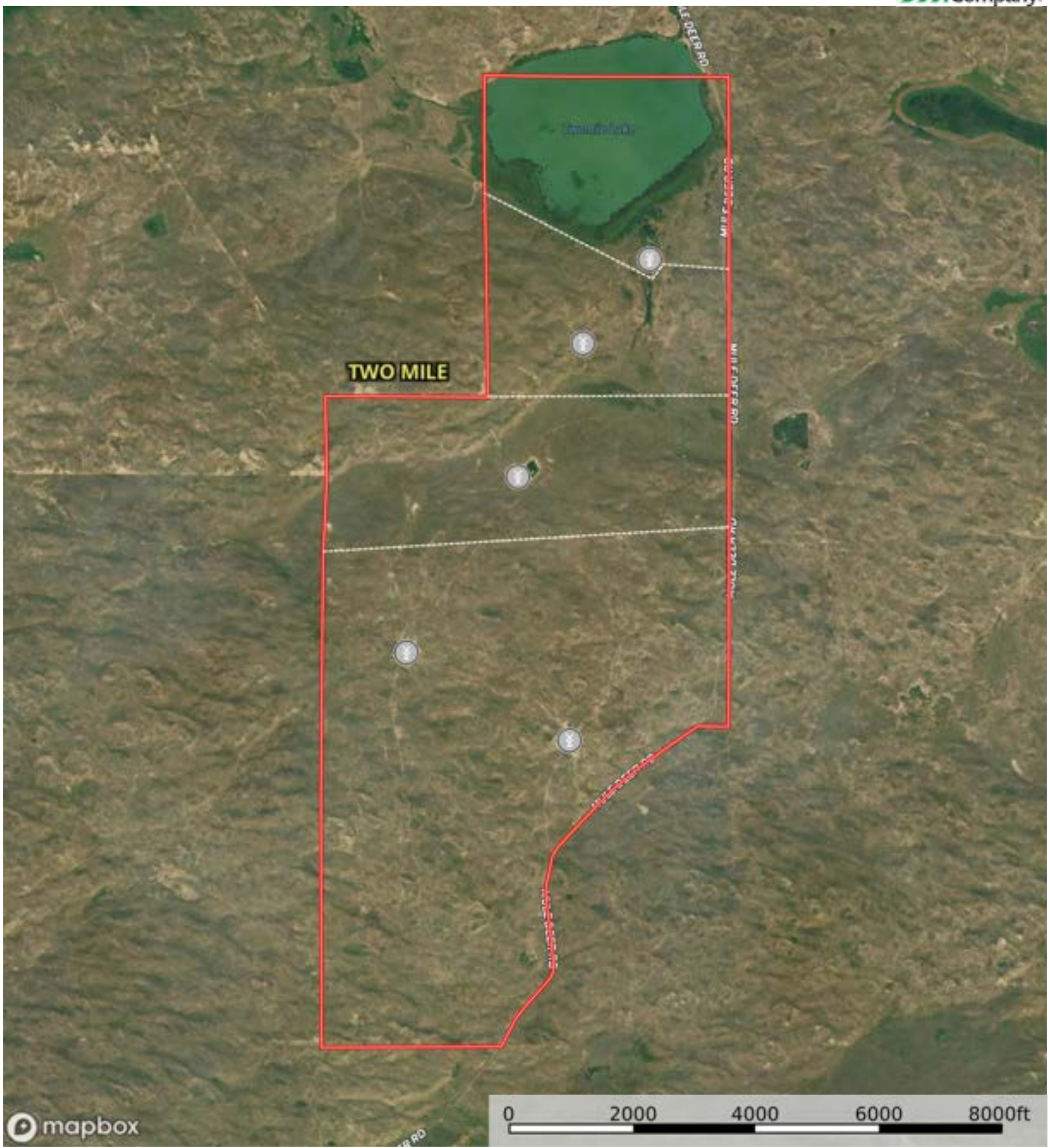
Land, Capability

								
	1	2	3	4	5	6	7	8
'Wild Life'	•	•	•	•	•	•	•	•
Forestry	•	•	•	•	•	•	•	
Limited	•	•	•	•	•	•	•	
Moderate	•	•	•	•	•	•		
Intense	•	•	•	•	•			
Limited	•	•	•	•				
Moderate	•	•	•					
Intense	•	•						
Very Intense	•							

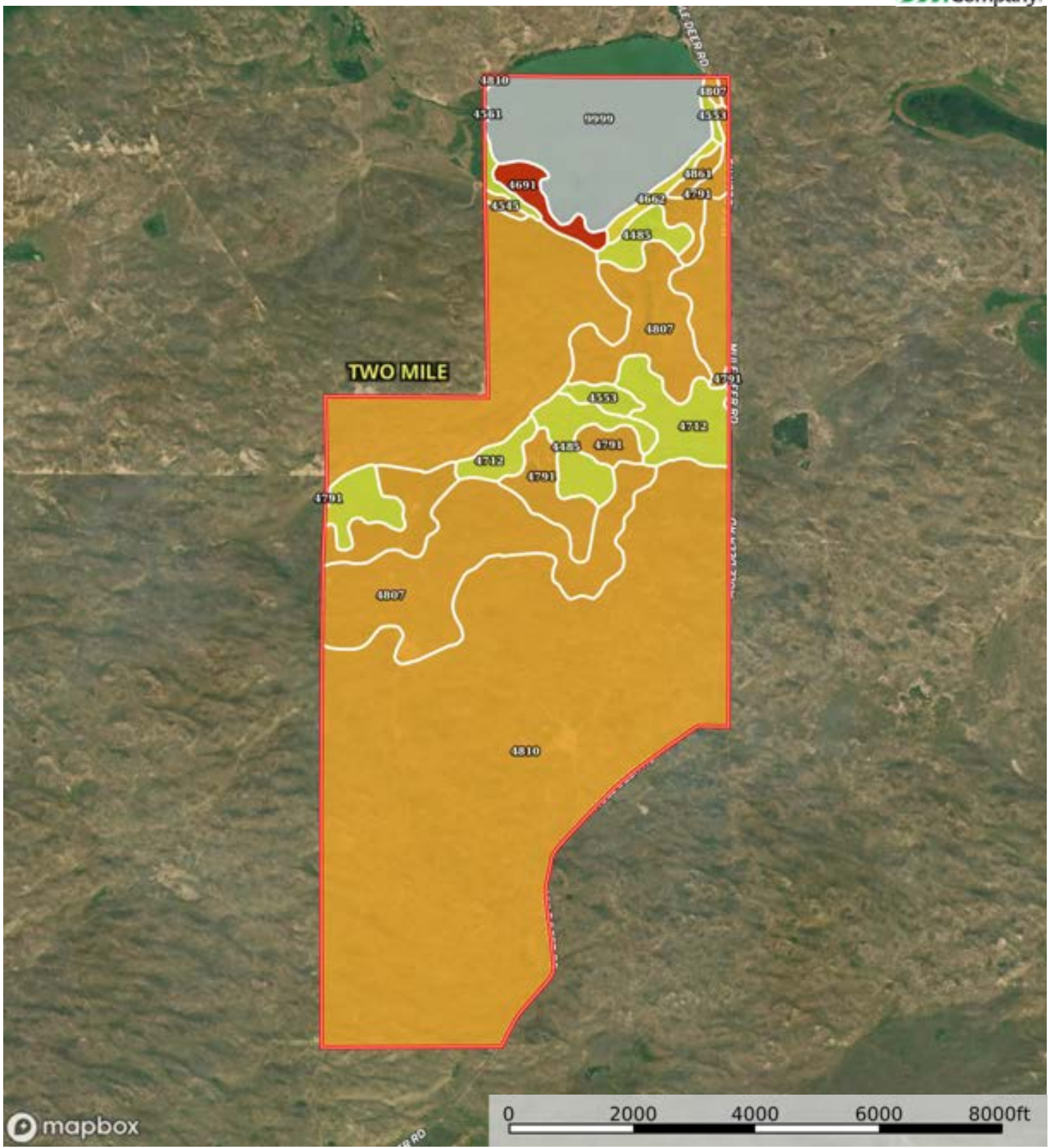
Grazing Cultivation

(c) climatic limitations (e) susceptibility to erosion

(s) soil limitations within the rooting zone (w) excess of water



Windmill Fence Boundary



Boundary

| Boundary 1778.06 ac

SOIL CODE	SOIL DESCRIPTION	ACRES	%	CPI	NCCPI	CAP
4810	Valentine fine sand, rolling and hilly, 9 to 60 percent slopes	1107.13	62.27	9	17	6e
4807	Valentine fine sand, rolling, 9 to 24 percent slopes	227.18	12.78	11	23	6e
9999	Water	151.22	8.5	0	-	-
4791	Valentine fine sand, 3 to 9 percent slopes	101.5	5.71	19	28	6e
4485	Dunday loamy fine sand, 0 to 3 percent slopes	74.4	4.18	0	32	4e
4712	Nenzel loamy fine sand, 0 to 3 percent slopes	59.24	3.33	58	33	4e
4691	Marlake mucky peat	17.71	1.0	5	2	8w
4553	Elsmere loamy fine sand, 0 to 3 percent slopes	13.18	0.74	64	35	4w
4662	Loup fine sandy loam, 0 to 1 percent slopes	9.48	0.53	30	26	5w
4561	Elsmere-Loup complex, 0 to 3 percent slopes	6.24	0.35	48	31	4w
4861	Valentine-Els complex, 0 to 9 percent slopes	6.03	0.34	25	27	6e
4545	Els-lpage fine sands, 0 to 3 percent slopes	3.14	0.18	38	26	6w
4800	Valentine fine sand, hilly, 24 to 60 percent slopes	1.61	0.09	6	6	7e
TOTALS		1778.06(*)	100%	11.04	18.23	5.83







(*) Total acres may differ in the second decimal compared to the sum of each acreage soil. This is due to a round error because we only show the acres of each soil with two decimal.

Capability Legend

Increased Limitations and Hazards

Decreased Adaptability and Freedom of Choice Users

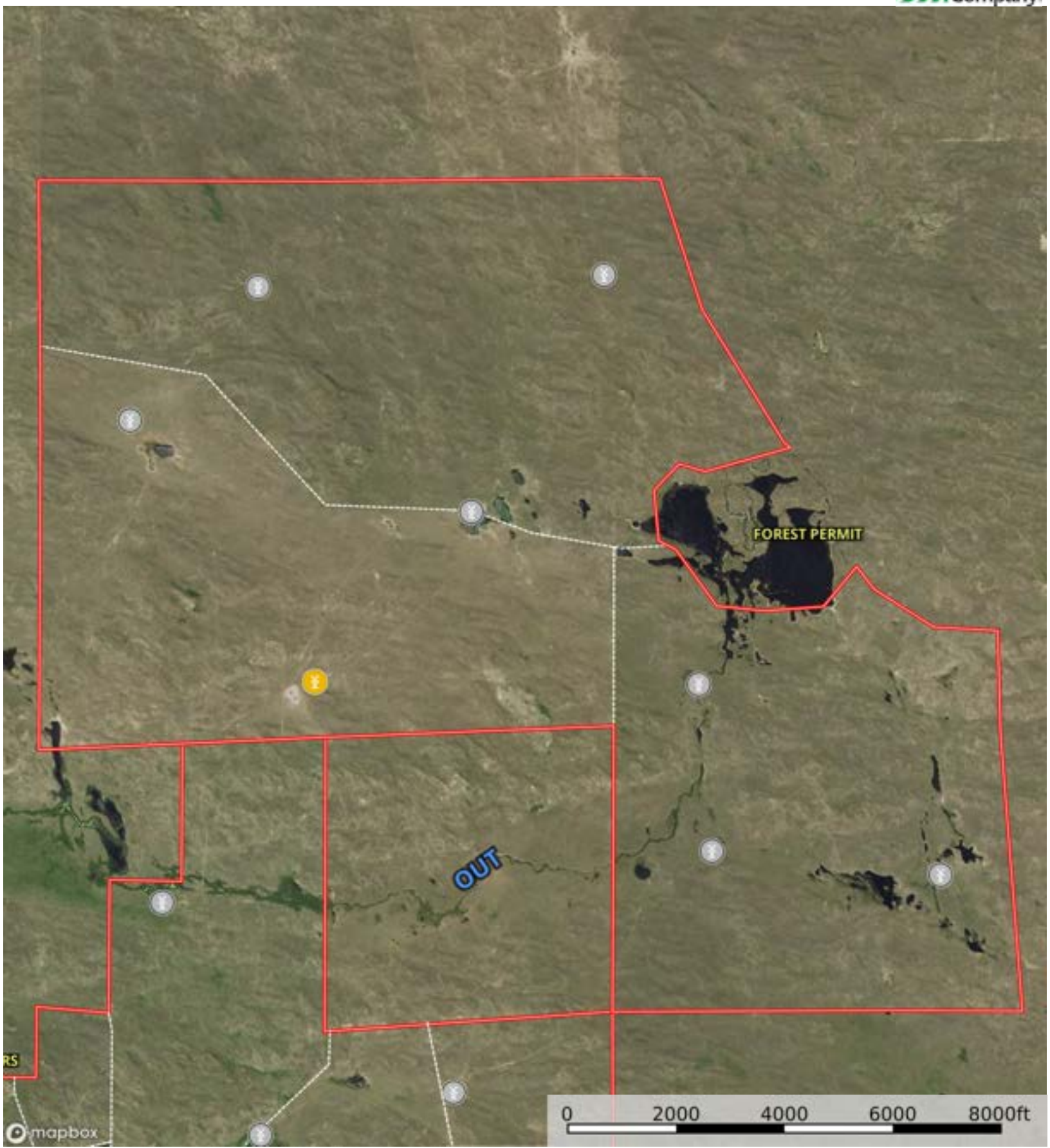
Land, Capability

								
	1	2	3	4	5	6	7	8
'Wild Life'	•	•	•	•	•	•	•	•
Forestry	•	•	•	•	•	•	•	
Limited	•	•	•	•	•	•	•	
Moderate	•	•	•	•	•	•		
Intense	•	•	•	•	•			
Limited	•	•	•	•				
Moderate	•	•	•					
Intense	•	•						
Very Intense	•							

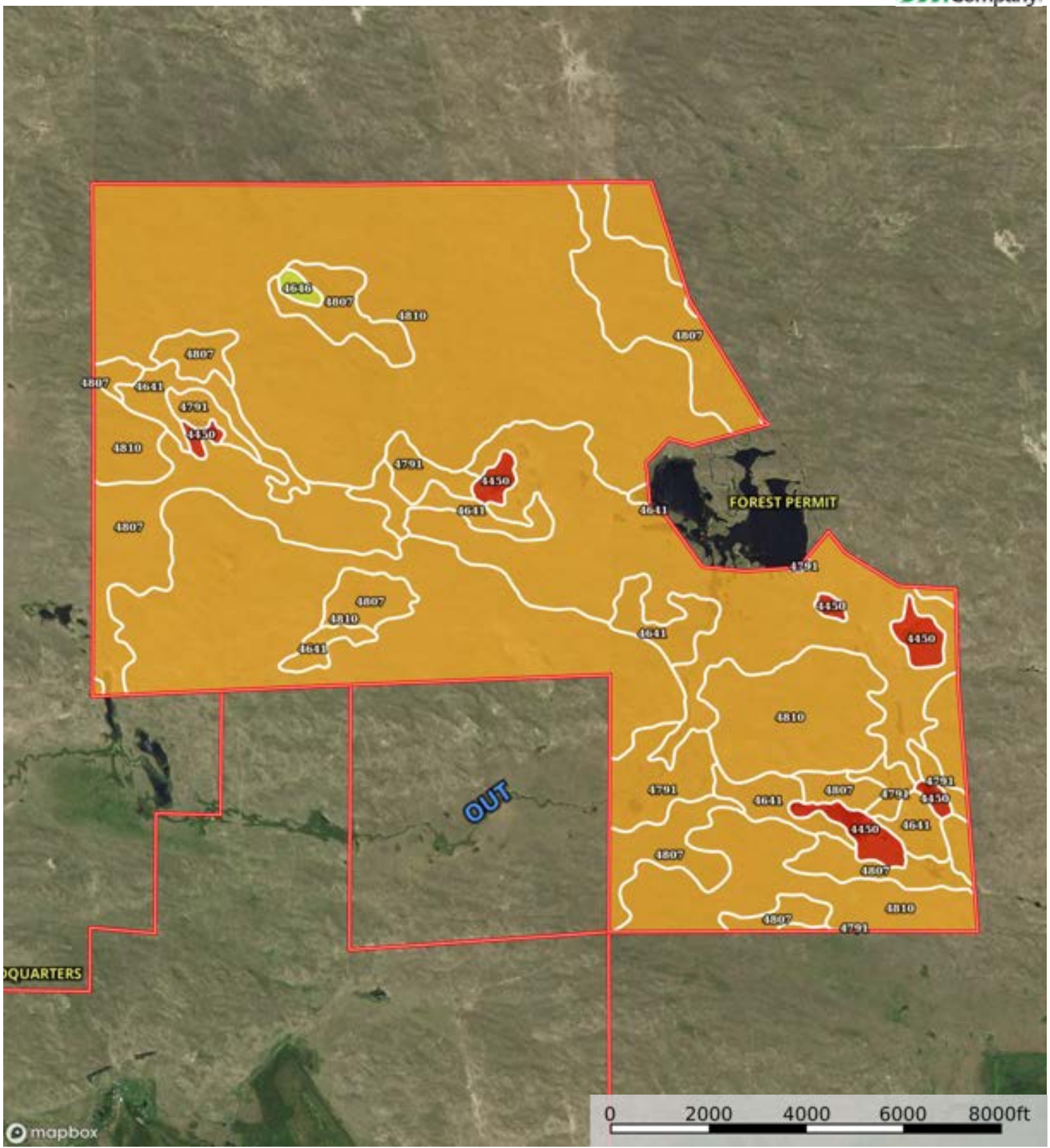
Grazing Cultivation

(c) climatic limitations (e) susceptibility to erosion

(s) soil limitations within the rooting zone (w) excess of water



Solar Windmill Fence Boundary



Boundary

| Boundary 4050.77 ac

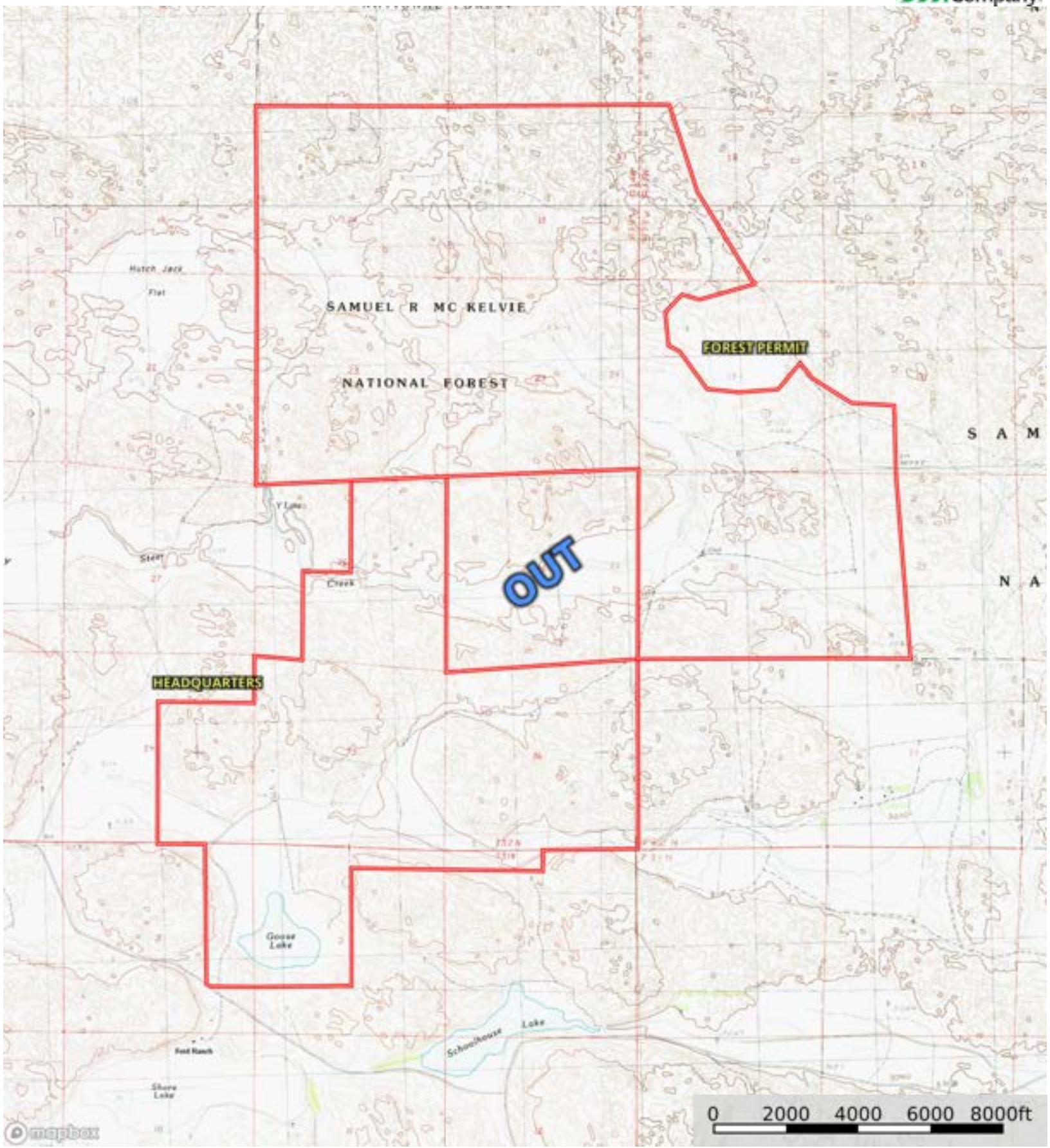
SOIL CODE	SOIL DESCRIPTION	ACRES	%	CPI	NCCPI	CAP
4810	Valentine fine sand, rolling and hilly, 9 to 60 percent slopes	2346.37	57.92	9	17	6e
4807	Valentine fine sand, rolling, 9 to 24 percent slopes	1200.89	29.65	11	23	6e
4641	lpage fine sand, 0 to 3 percent slopes	236.61	5.84	53	25	6e
4791	Valentine fine sand, 3 to 9 percent slopes	171.8	4.24	19	28	6e
4450	Valentine severely eroded-Valentine complex, 0 to 60 percent slopes	85.96	2.12	8	8	8e
4646	lpage loamy fine sand, 0 to 3 percent slopes	9.14	0.23	54	31	4e
TOTALS		4050.77(*)	100%	12.67	19.55	6.04

(*) Total acres may differ in the second decimal compared to the sum of each acreage soil. This is due to a round error because we only show the acres of each soil with two decimal.



L-2500102

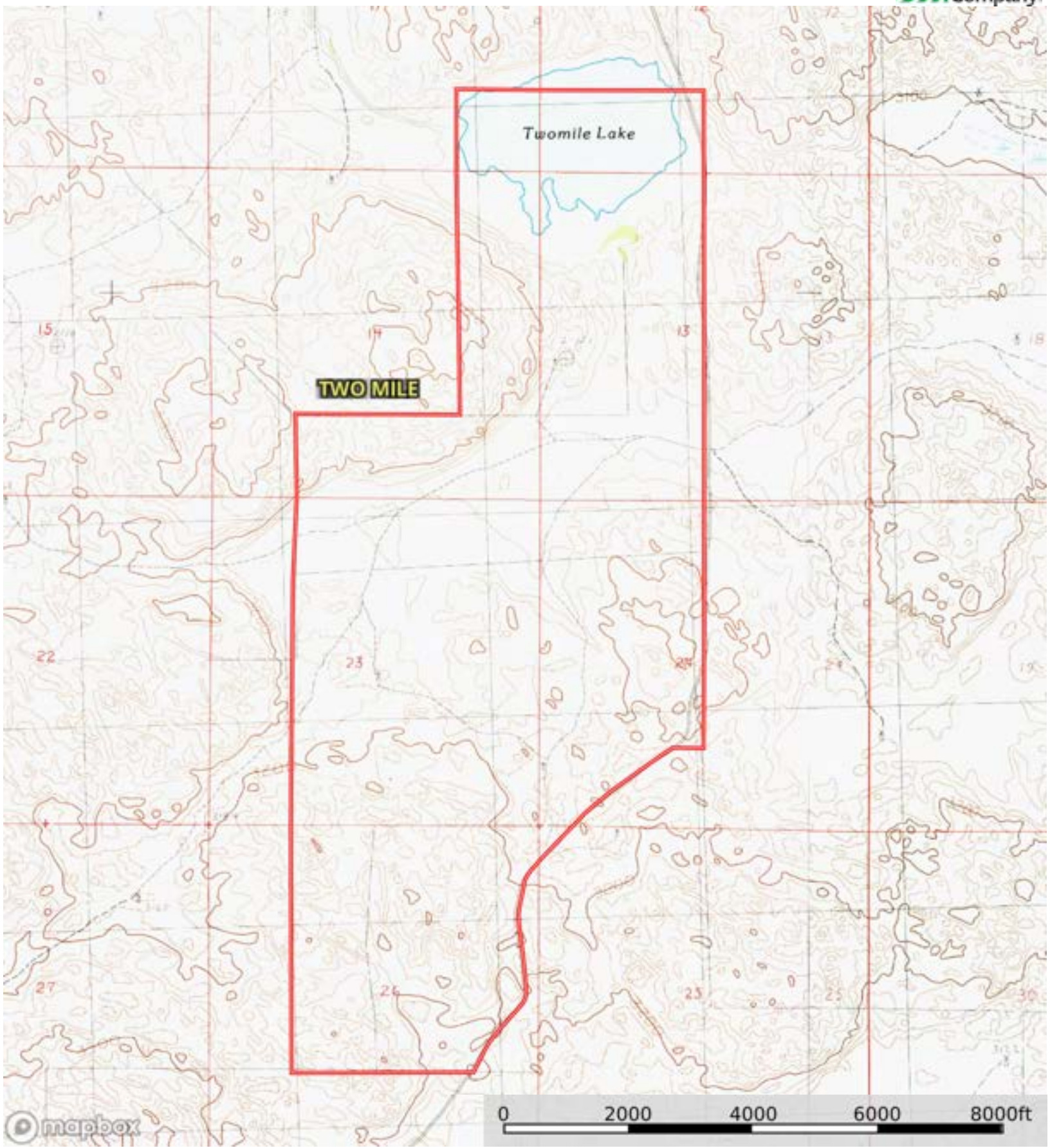
Cherry County, Nebraska, 4141.3 AC +/-



Boundary

L-2500102

Cherry County, Nebraska, 4141.3 AC +/-



Boundary