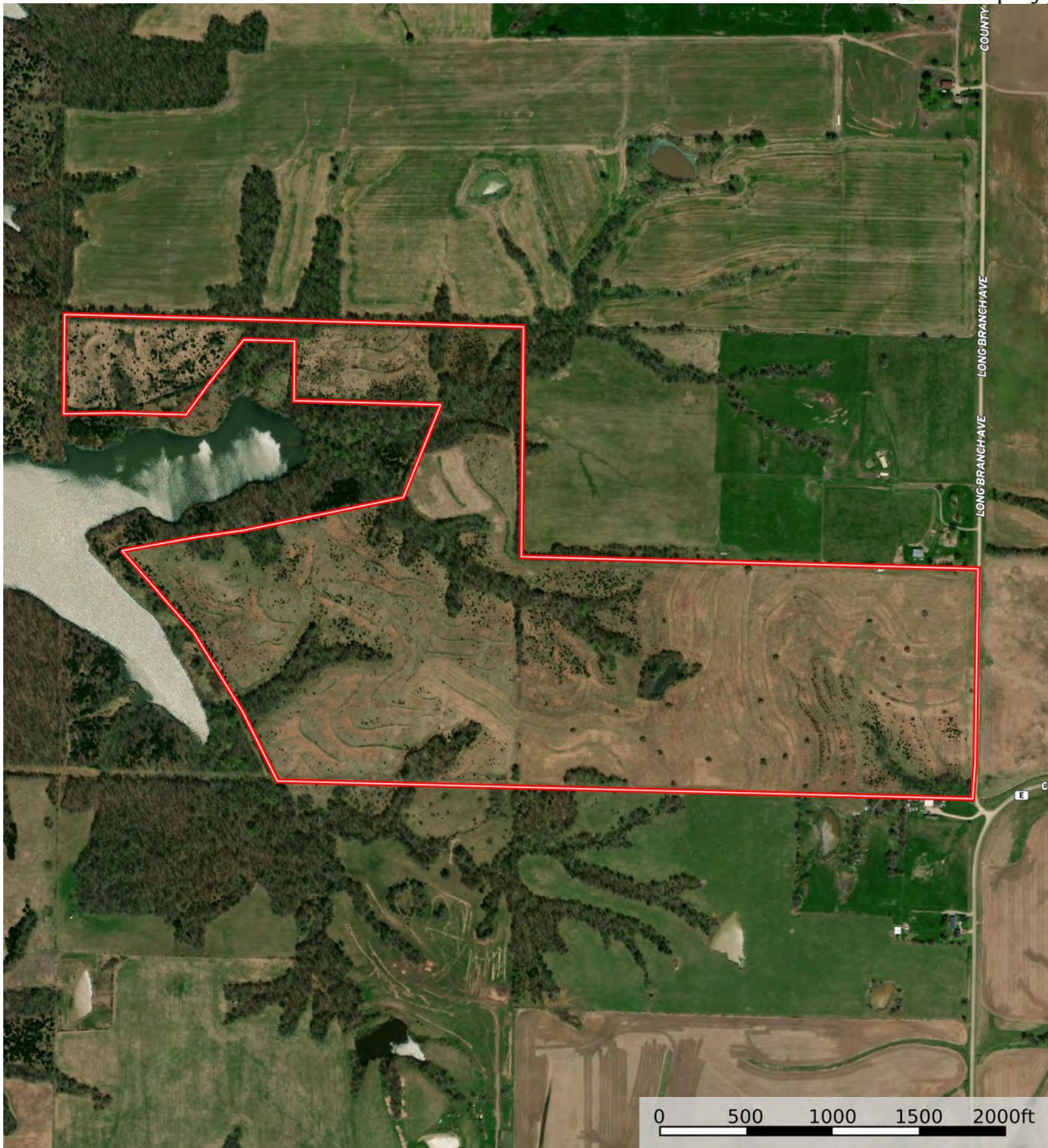
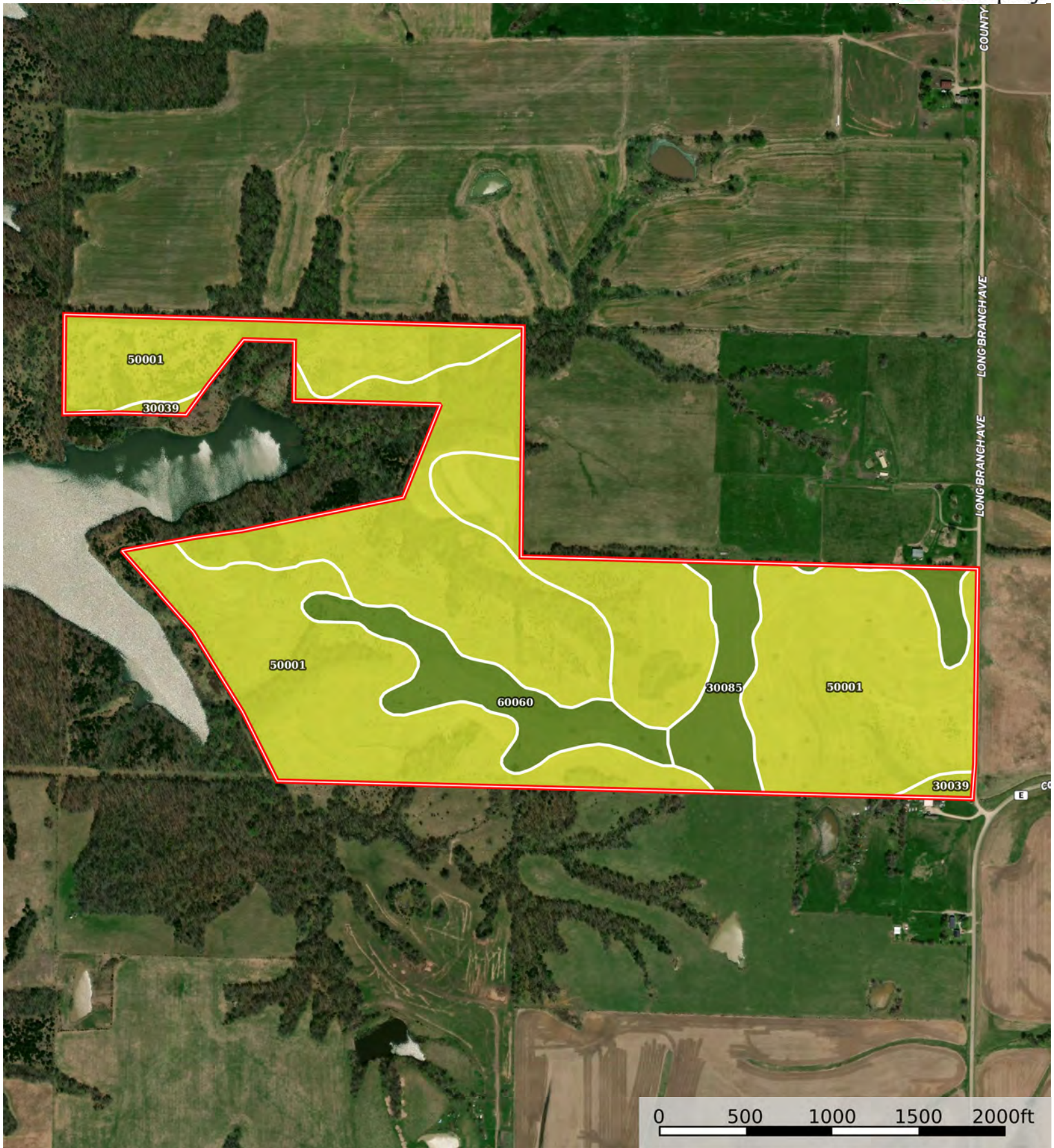


Boundary



Boundary



Boundary

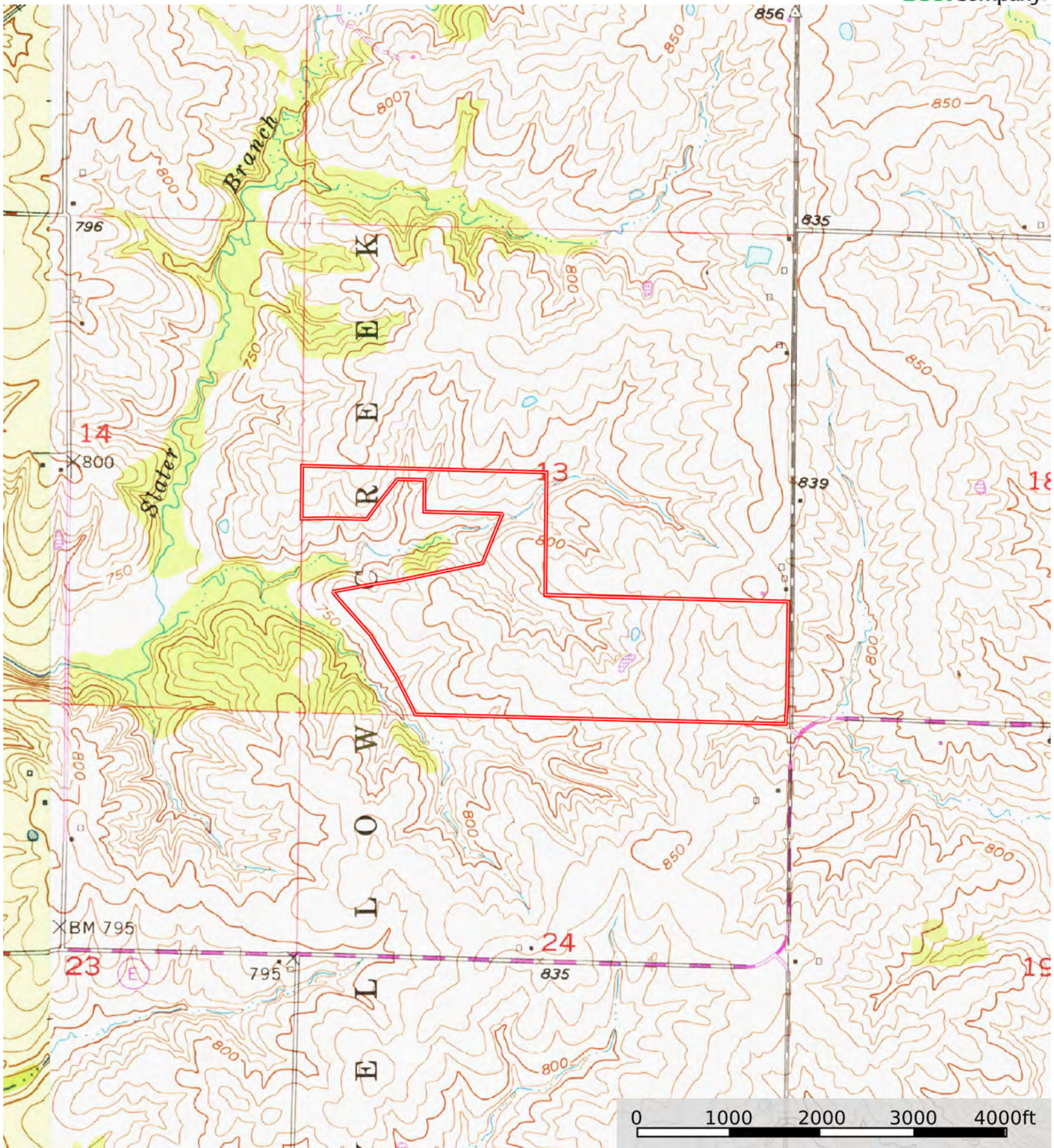


| Boundary 180.51 ac

SOIL CODE	SOIL DESCRIPTION	ACRES	%	CPI	NCCPI	CAP
50001	Armstrong loam, 5 to 9 percent slopes, eroded	114.15	63.24	0	66	4e
30039	Armstrong loam, 9 to 14 percent slopes, eroded	39.94	22.13	0	63	4e
60060	Bevier silty clay loam, 2 to 5 percent slopes, moderately eroded	13.8	7.65	0	64	2e
30085	Grundy silt loam, 2 to 5 percent slopes	12.62	6.99	0	74	2e
TOTALS		180.51(*)	100%	-	65.74	3.71

(*) Total acres may differ in the second decimal compared to the sum of each acreage soil. This is due to a round error because we only show the acres of each soil with two decimal.





Boundary