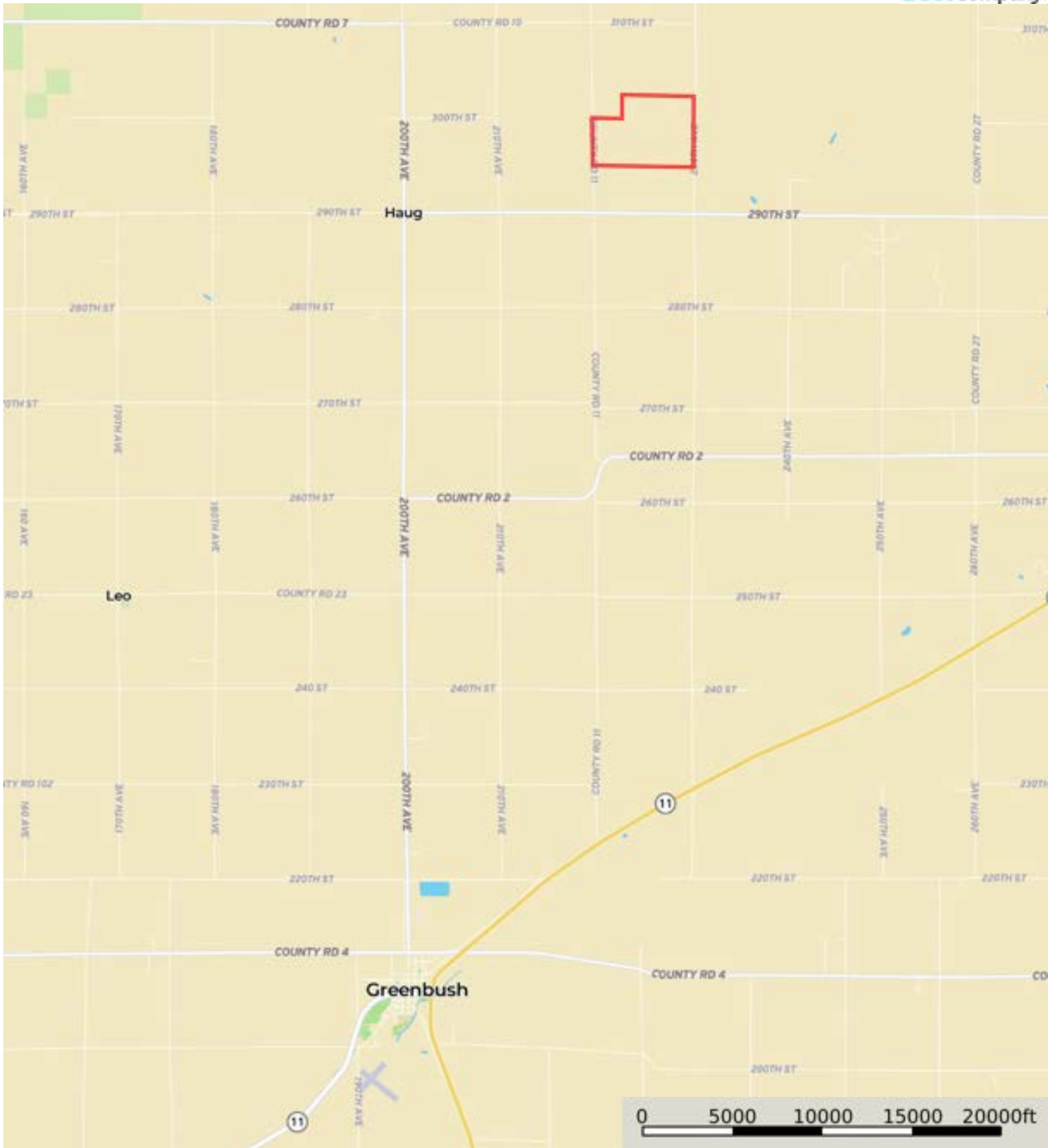


L-2500113

Roseau County, Minnesota, 460.93 AC +/-



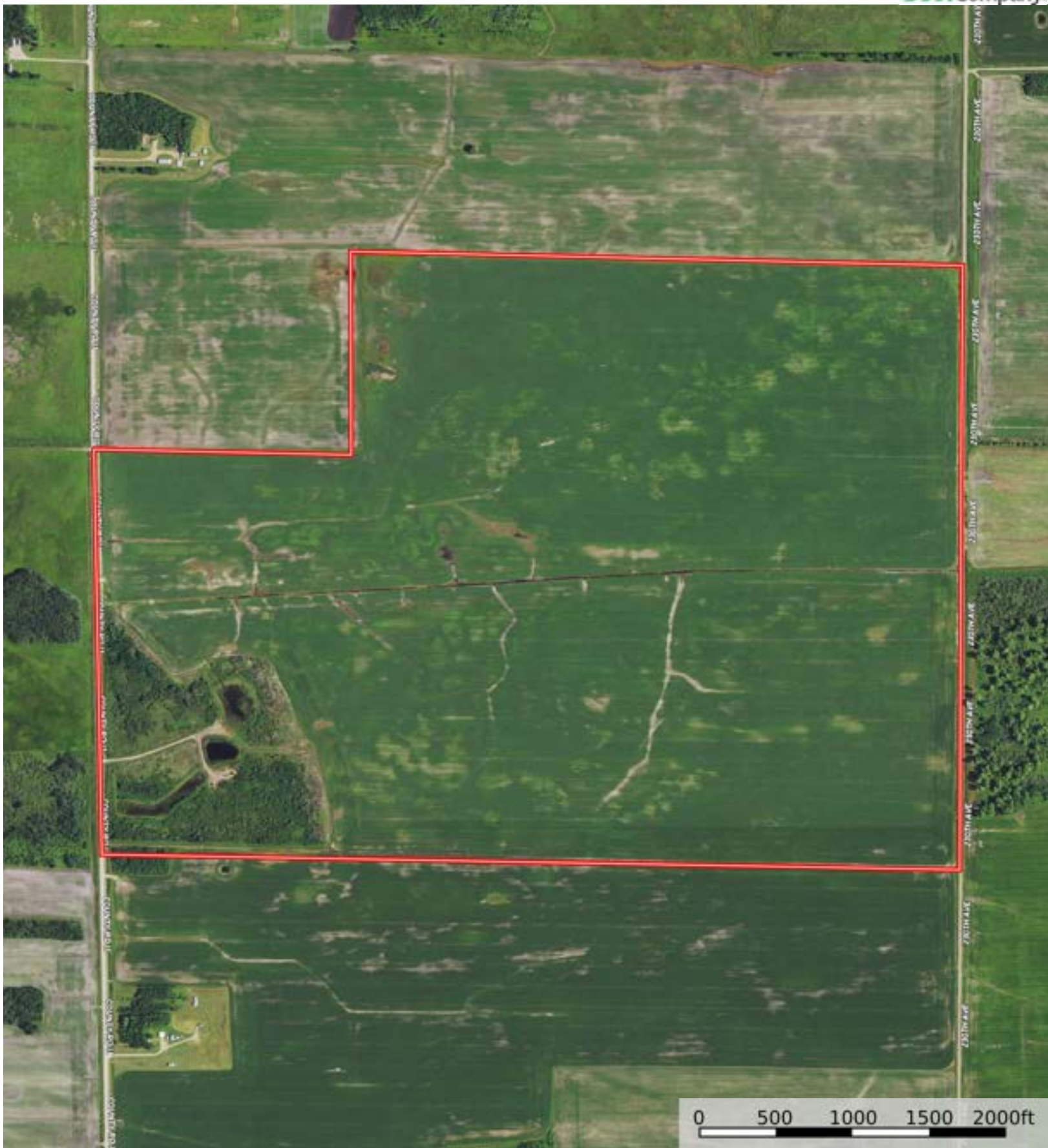
Boundary



The information contained herein was obtained from sources deemed to be reliable. Land id™ Services makes no warranties or guarantees as to the completeness or accuracy thereof.

L-2500113

Roseau County, Minnesota, 460.93 AC +/-



Boundary



| Boundary 464.97 ac

SOIL CODE	SOIL DESCRIPTION	ACRES	%	CPI	NCCPI	CAP
I830A	Woodslake clay, 0 to 1 percent slopes	106.3 2	22.87	86	31	3w
I745A	Espelie fine sandy loam, 0 to 2 percent slopes	90.93	19.56	70	39	3w
I95A	Kratka and Strathcona soils, dense till, 0 to 1 percent slopes	56.83	12.22	15	29	6w
I127A	Percy loam, 0 to 1 percent slopes	50.54	10.87	85	41	2w
I103A	Kratka fine sandy loam, dense till, 0 to 1 percent slopes	25.18	5.42	77	37	2w
I81A	Northwood muck, dense till, 0 to 1 percent slopes	24.01	5.16	10	43	6w
I88A	Haug muck, 0 to 1 percent slopes	22.32	4.8	15	38	6w
I741A	Boash clay loam, dense till, 0 to 1 percent slopes	20.05	4.31	88	51	2w
I83A	Wildwood muck, dense till, 0 to 1 percent slopes	14.41	3.1	15	49	6w
I84A	Percy loam, 0 to 1 percent slopes, very cobbly	14.1	3.03	70	33	3s
I763A	Hilaire fine sandy loam, 0 to 2 percent slopes	14.03	3.02	70	58	2s
I86A	Percy mucky loam, 0 to 1 percent slopes	11.45	2.46	15	28	6w
I744A	Grano loam, 0 to 1 percent slopes	8.9	1.91	83	58	2w
I92A	Grano clay, 0 to 1 percent slopes	2.99	0.64	79	53	2w
I739A	Dora muck, 0 to 1 percent slopes	2.91	0.63	5	49	6w
TOTALS		464.9 7(*)	100%	60.83	37.68	3.59







(\*) Total acres may differ in the second decimal compared to the sum of each acreage soil. This is due to a round error because we only show the acres of each soil with two decimal.

## Capability Legend

Increased Limitations and Hazards

Decreased Adaptability and Freedom of Choice Users

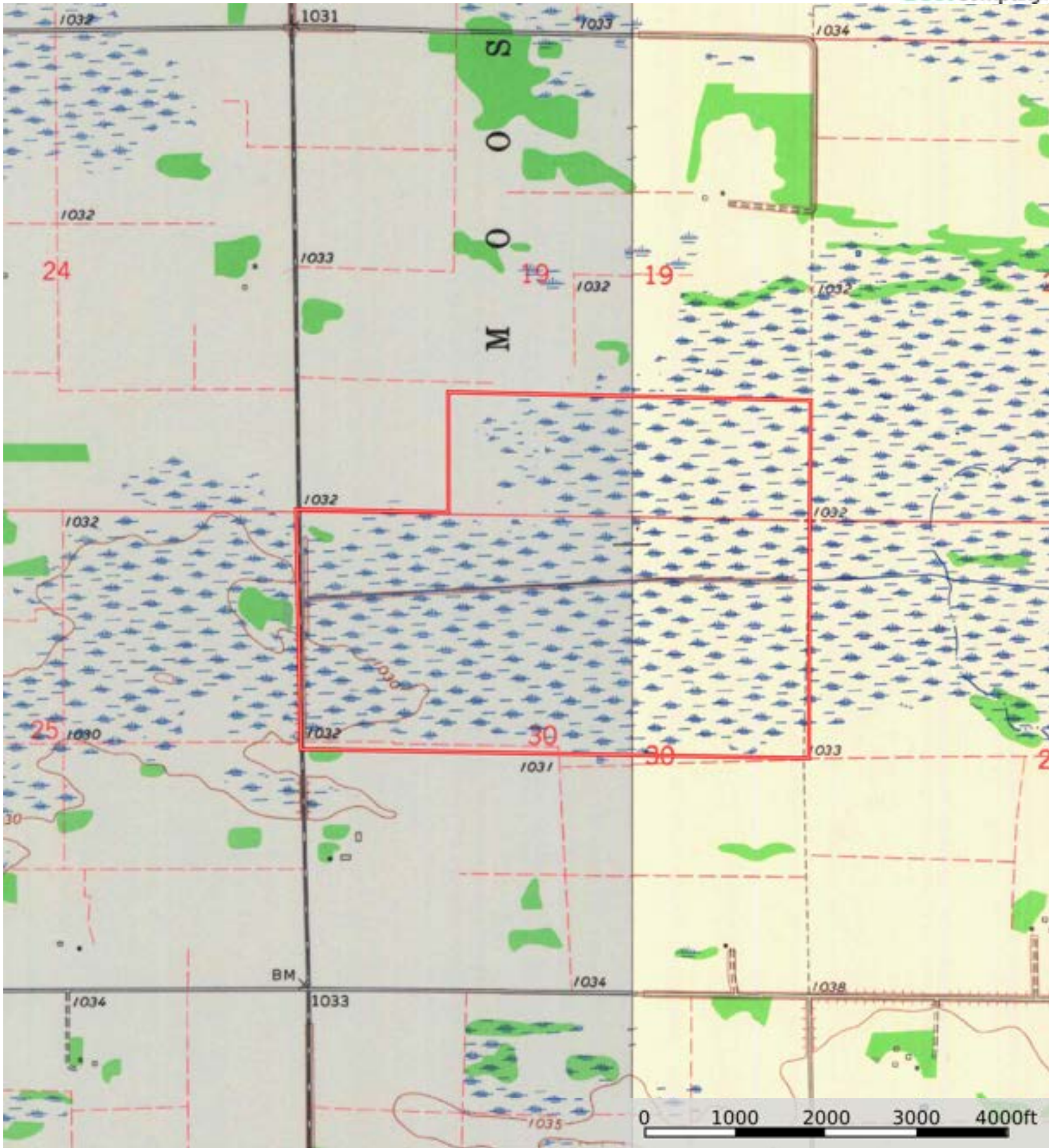
Land, Capability

								
	1	2	3	4	5	6	7	8
'Wild Life'	•	•	•	•	•	•	•	•
Forestry	•	•	•	•	•	•	•	
Limited	•	•	•	•	•	•	•	
Moderate	•	•	•	•	•	•		
Intense	•	•	•	•	•			
Limited	•	•	•	•				
Moderate	•	•	•					
Intense	•	•						
Very Intense	•							

### Grazing Cultivation

(c) climatic limitations (e) susceptibility to erosion

(s) soil limitations within the rooting zone (w) excess of water



Boundary

