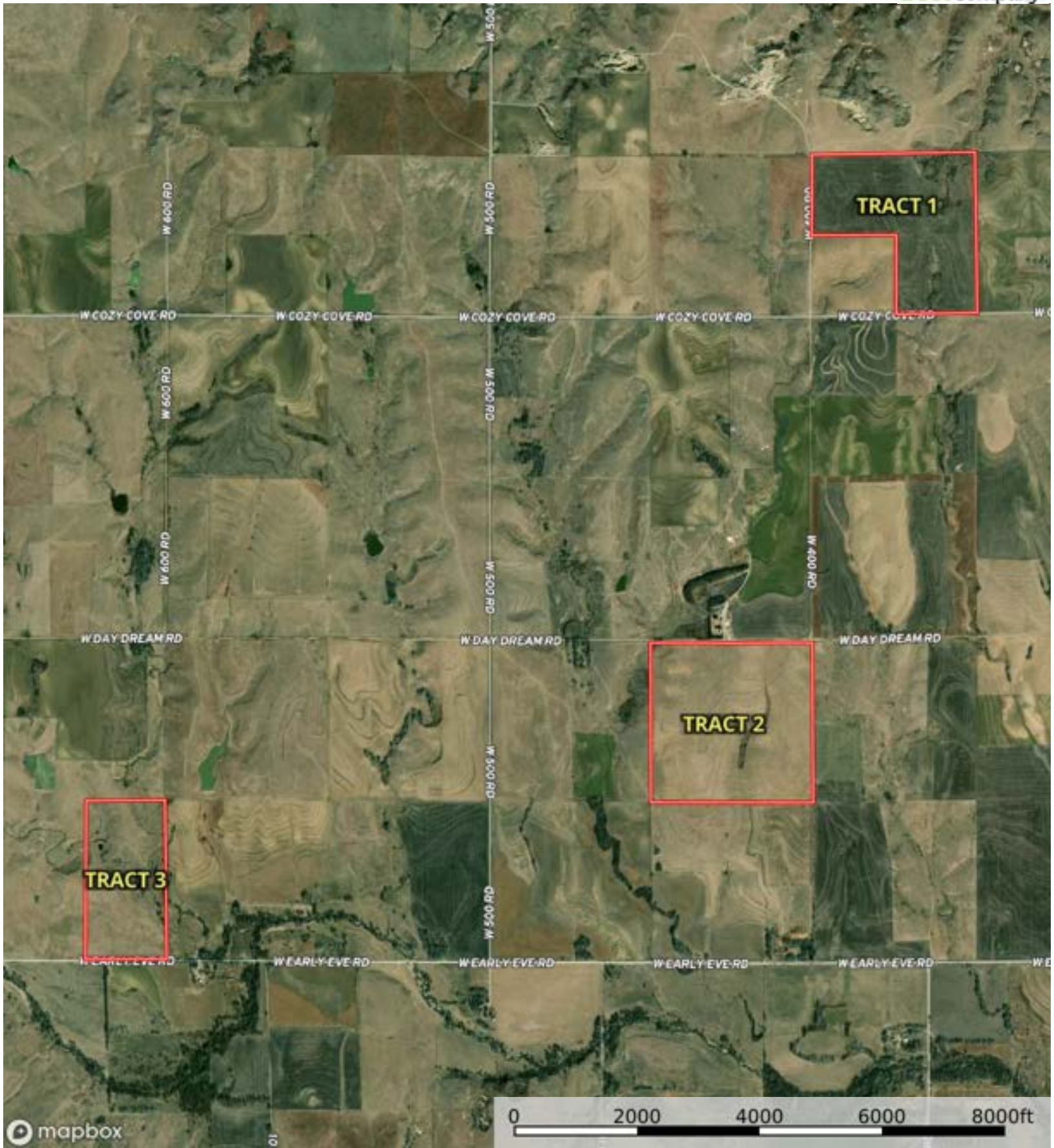


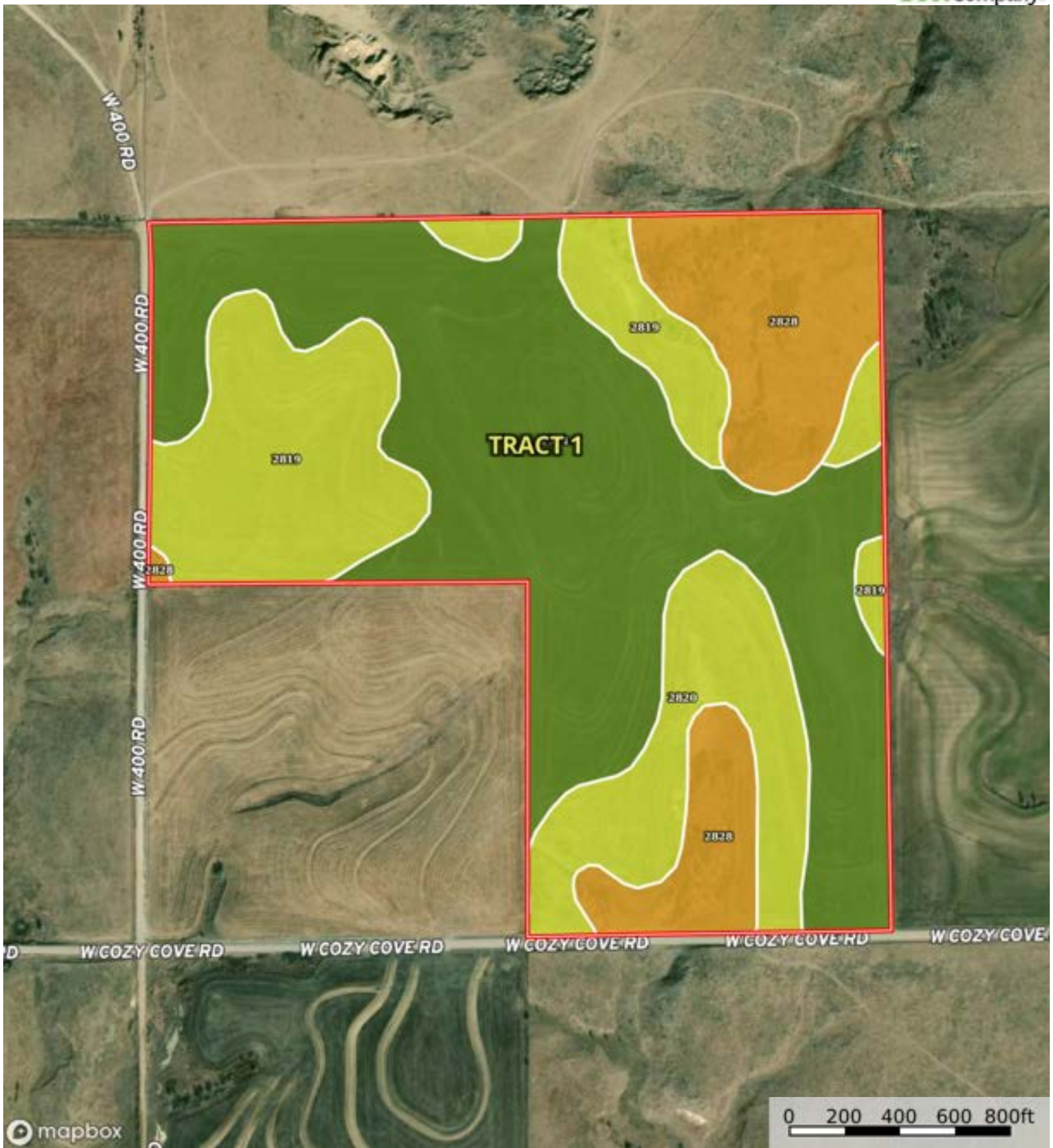
Boundary



Boundary



Boundary



Boundary

| Boundary 120.24 ac

SOIL CODE	SOIL DESCRIPTION	ACRES	%	CPI	NCCPI	CAP
2674	Holdrege silt loam, 1 to 3 percent slopes, plains and breaks	58.96	49.04	0	76	2e
2819	Uly silt loam, 6 to 11 percent slopes	25.74	21.41	0	74	4e
2828	Uly-Penden complex, 6 to 20 percent slopes	21.0	17.47	0	64	6e
2820	Uly silt loam, 6 to 11 percent slopes, eroded	14.54	12.09	0	67	4e
TOTALS		120.24(*)	100%	-	72.39	3.37

(*) Total acres may differ in the second decimal compared to the sum of each acreage soil. This is due to a round error because we only show the acres of each soil with two decimal.







Boundary

| Boundary 158.34 ac

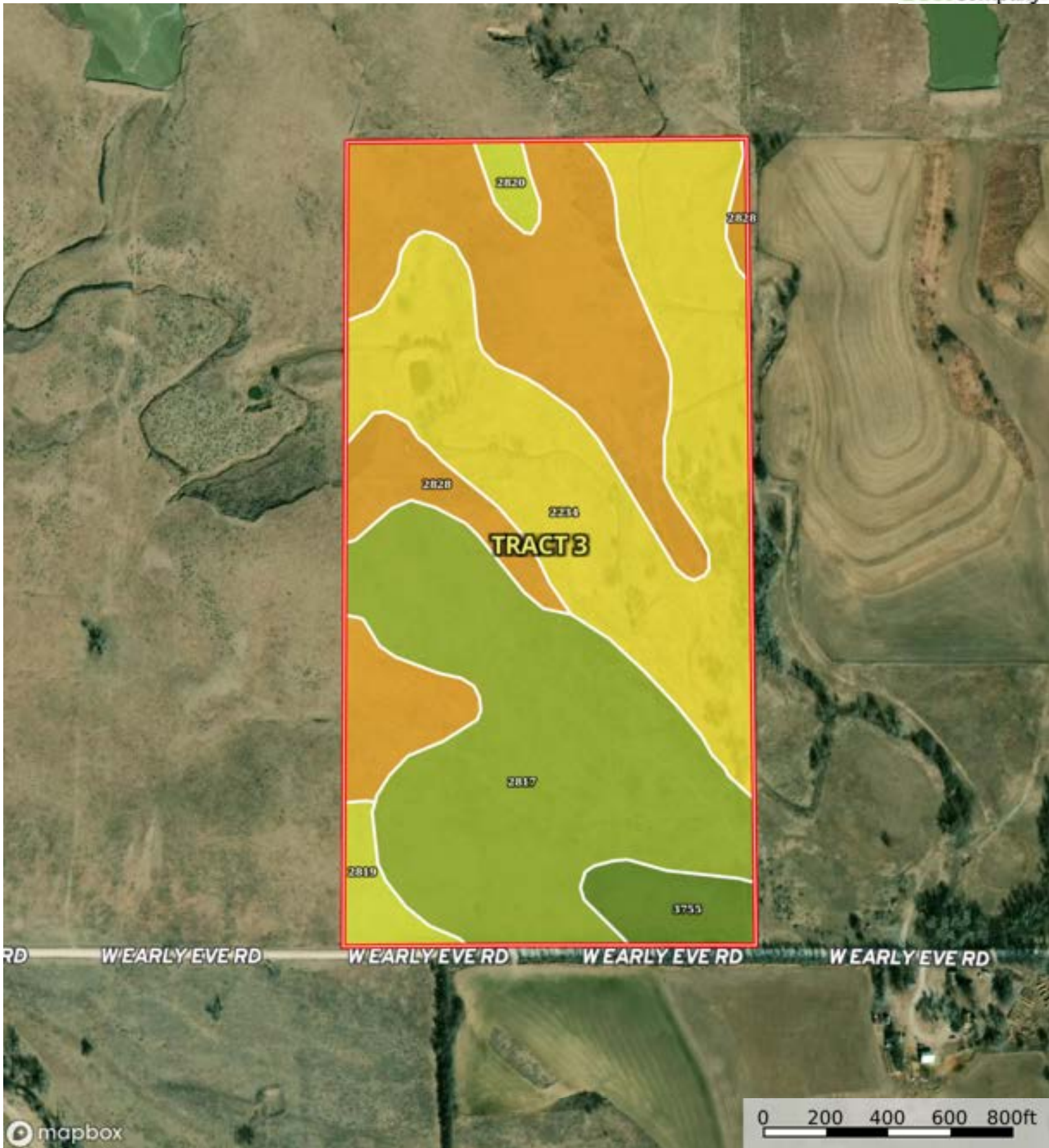
SOIL CODE	SOIL DESCRIPTION	ACRES	%	CPI	NCCPI	CAP
2674	Holdrege silt loam, 1 to 3 percent slopes, plains and breaks	101.83	64.32	0	76	2e
2820	Uly silt loam, 6 to 11 percent slopes, eroded	54.99	34.73	0	67	4e
2236	Roxbury silt loam, occasionally flooded	1.3	0.82	0	79	2w
2828	Uly-Penden complex, 6 to 20 percent slopes	0.22	0.14	0	64	6e
TOTALS		158.34(*)	100%	-	72.89	2.7

(*) Total acres may differ in the second decimal compared to the sum of each acreage soil. This is due to a round error because we only show the acres of each soil with two decimal.





Boundary



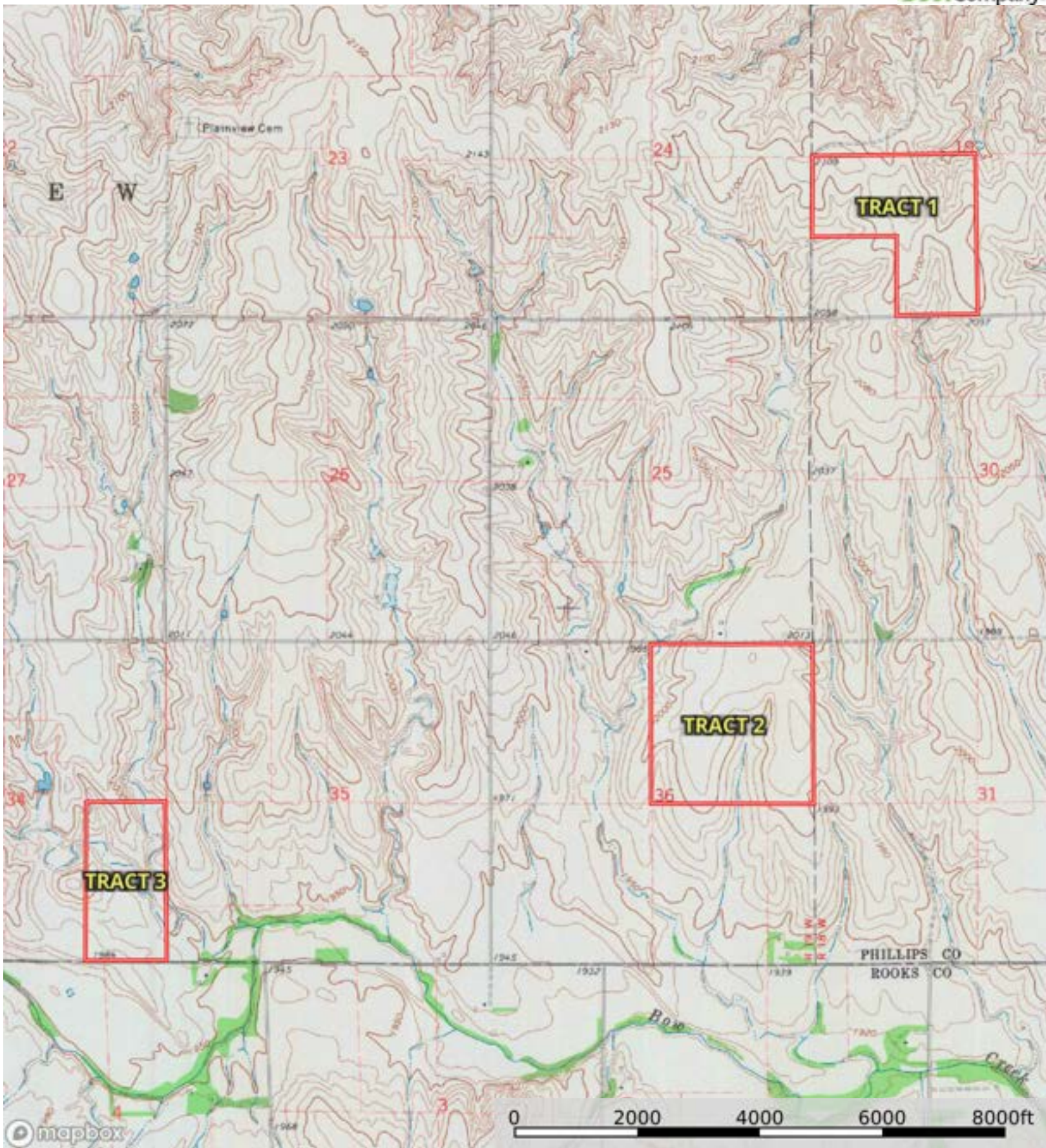
Boundary

| Boundary 77.85 ac

SOIL CODE	SOIL DESCRIPTION	ACRES	%	CPI	NCCPI	CAP
2234	Roxbury silt loam, channeled, frequently flooded	26.21	33.67	0	49	5w
2817	Uly silt loam, 3 to 6 percent slopes	24.45	31.41	0	76	3e
2828	Uly-Penden complex, 6 to 20 percent slopes	21.68	27.85	0	64	6e
3755	Hord silt loam, rarely flooded	2.82	3.62	0	78	2c
2819	Uly silt loam, 6 to 11 percent slopes	1.8	2.31	0	74	4e
2820	Uly silt loam, 6 to 11 percent slopes, eroded	0.89	1.14	0	67	4e
TOTALS		77.85(*)	100%	-	63.49	4.51

(*) Total acres may differ in the second decimal compared to the sum of each acreage soil. This is due to a round error because we only show the acres of each soil with two decimal.





Boundary