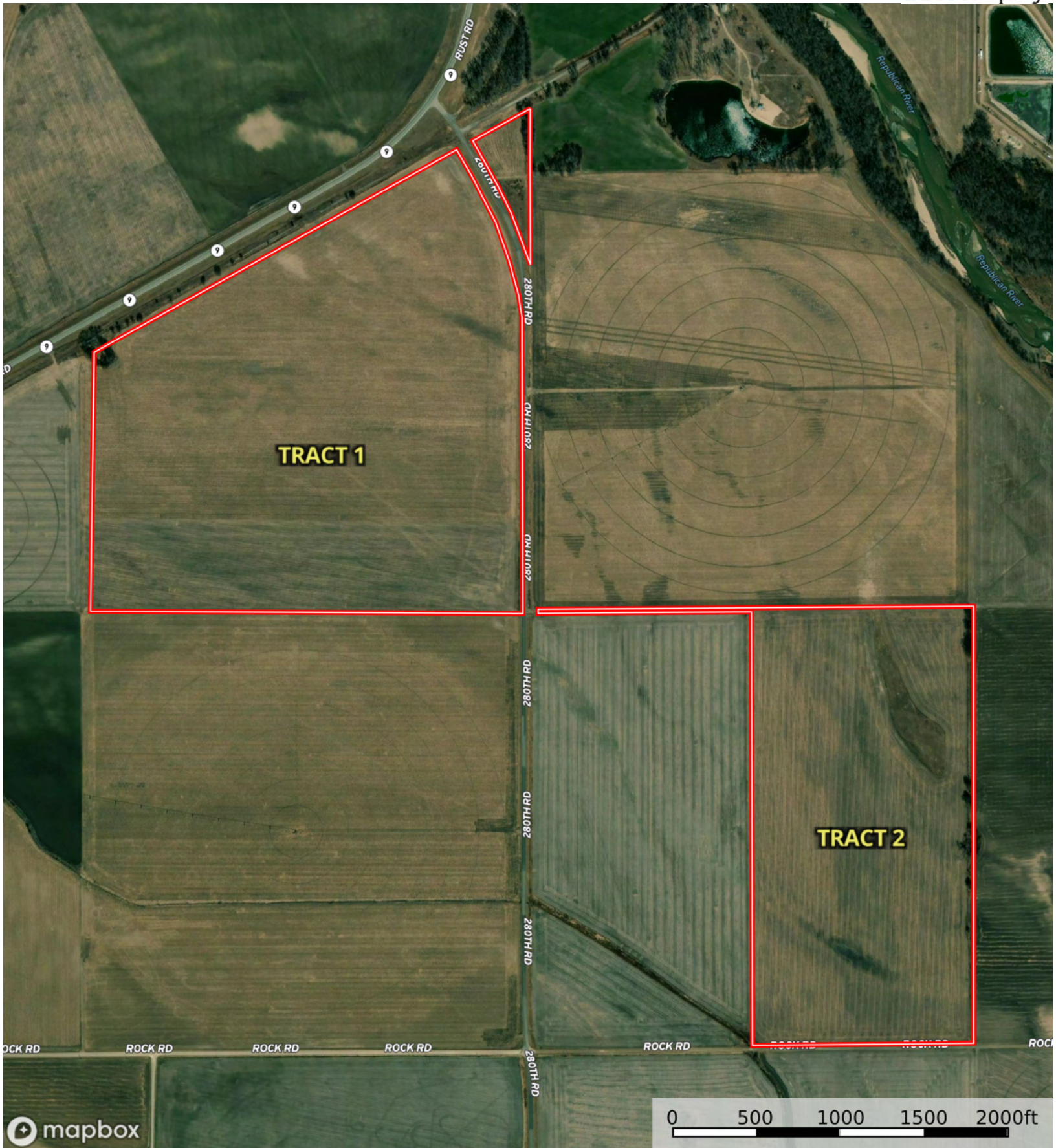
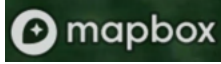
 Boundary



Boundary





|  All Polygons 132.93 ac

SOIL CODE	SOIL DESCRIPTION	ACRES	%	CPI	NCCPI	CAP
3580	Huscher silt loam, occasionally flooded	85.99	64.69	0	61	2w
3521	Cass fine sandy loam, occasionally flooded	46.73	35.16	0	38	2w
2113	Inavale loamy sand, occasionally flooded	0.21	0.16	0	27	3w
TOTALS		132.9 3(*)	100%	-	52.86	2.0

(\*) Total acres may differ in the second decimal compared to the sum of each acreage soil. This is due to a round error because we only show the acres of each soil with two decimal.

|  Boundary 129.54 ac

SOIL CODE	SOIL DESCRIPTION	ACRES	%	CPI	NCCPI	CAP
3580	Huscher silt loam, occasionally flooded	85.94	66.35	0	61	2w
3521	Cass fine sandy loam, occasionally flooded	43.39	33.5	0	38	2w
2113	Inavale loamy sand, occasionally flooded	0.21	0.16	0	27	3w
TOTALS		129.5 4(*)	100%	-	53.25	2.0

(\*) Total acres may differ in the second decimal compared to the sum of each acreage soil. This is due to a round error because we only show the acres of each soil with two decimal.

|  Boundary 3.39 ac

SOIL CODE	SOIL DESCRIPTION	ACRES	%	CPI	NCCPI	CAP
3521	Cass fine sandy loam, occasionally flooded	3.34	98.53	0	38	2w
3580	Huscher silt loam, occasionally flooded	0.05	1.47	0	61	2w
TOTALS		3.39(* )	100%	-	38.34	2.0









(\*) Total acres may differ in the second decimal compared to the sum of each acreage soil. This is due to a round error because we only show the acres of each soil with two decimal.

## Capability Legend

Increased Limitations and Hazards

Decreased Adaptability and Freedom of Choice Users

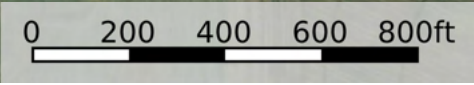
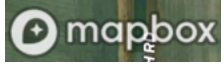
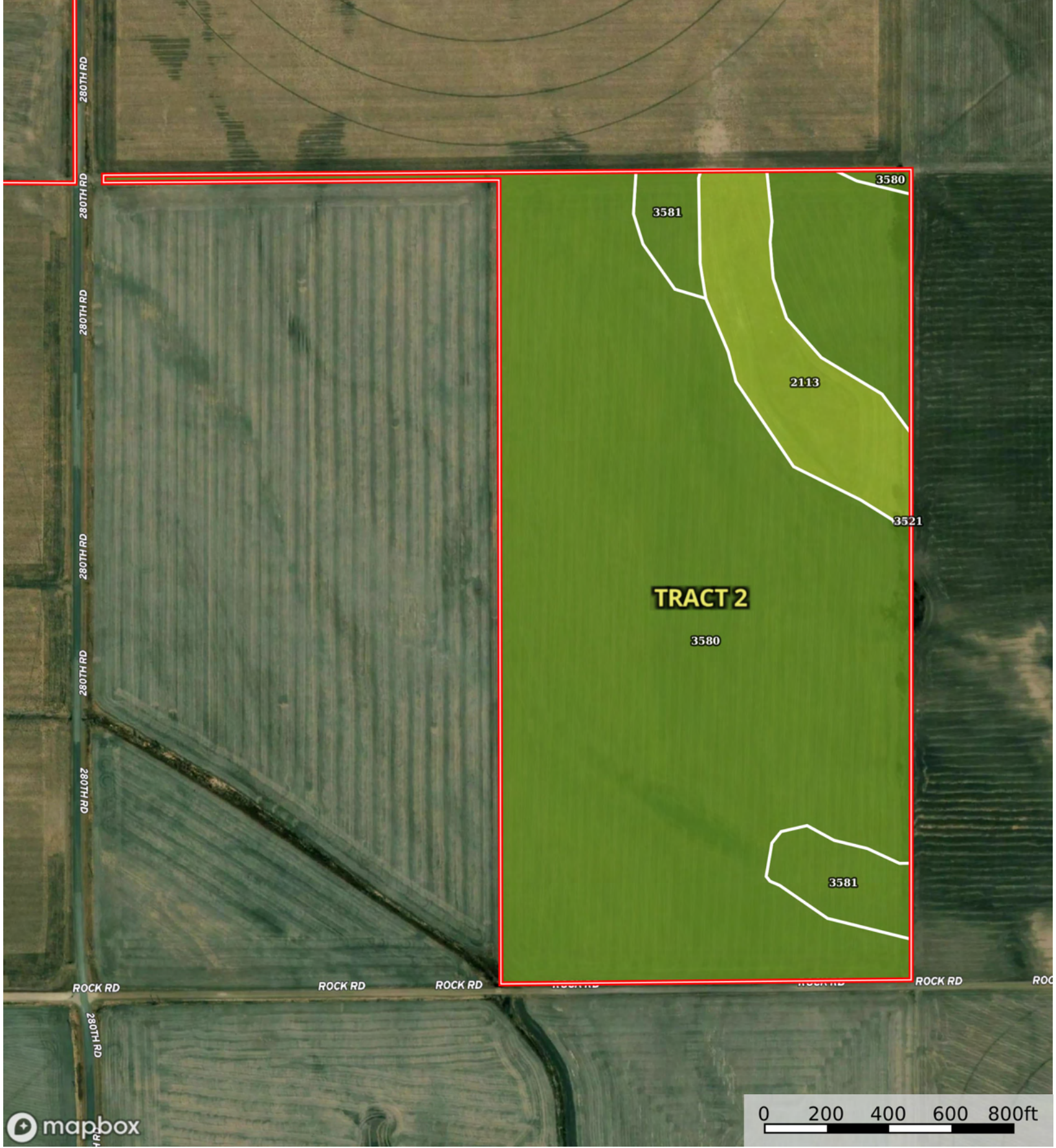
Land, Capability

								
	1	2	3	4	5	6	7	8
'Wild Life'	•	•	•	•	•	•	•	•
Forestry	•	•	•	•	•	•	•	
Limited	•	•	•	•	•	•	•	
Moderate	•	•	•	•	•	•		
Intense	•	•	•	•	•			
Limited	•	•	•	•				
Moderate	•	•	•					
Intense	•	•						
Very Intense	•							

### Grazing Cultivation

(c) climatic limitations (e) susceptibility to erosion

(s) soil limitations within the rooting zone (w) excess of water



 Boundary

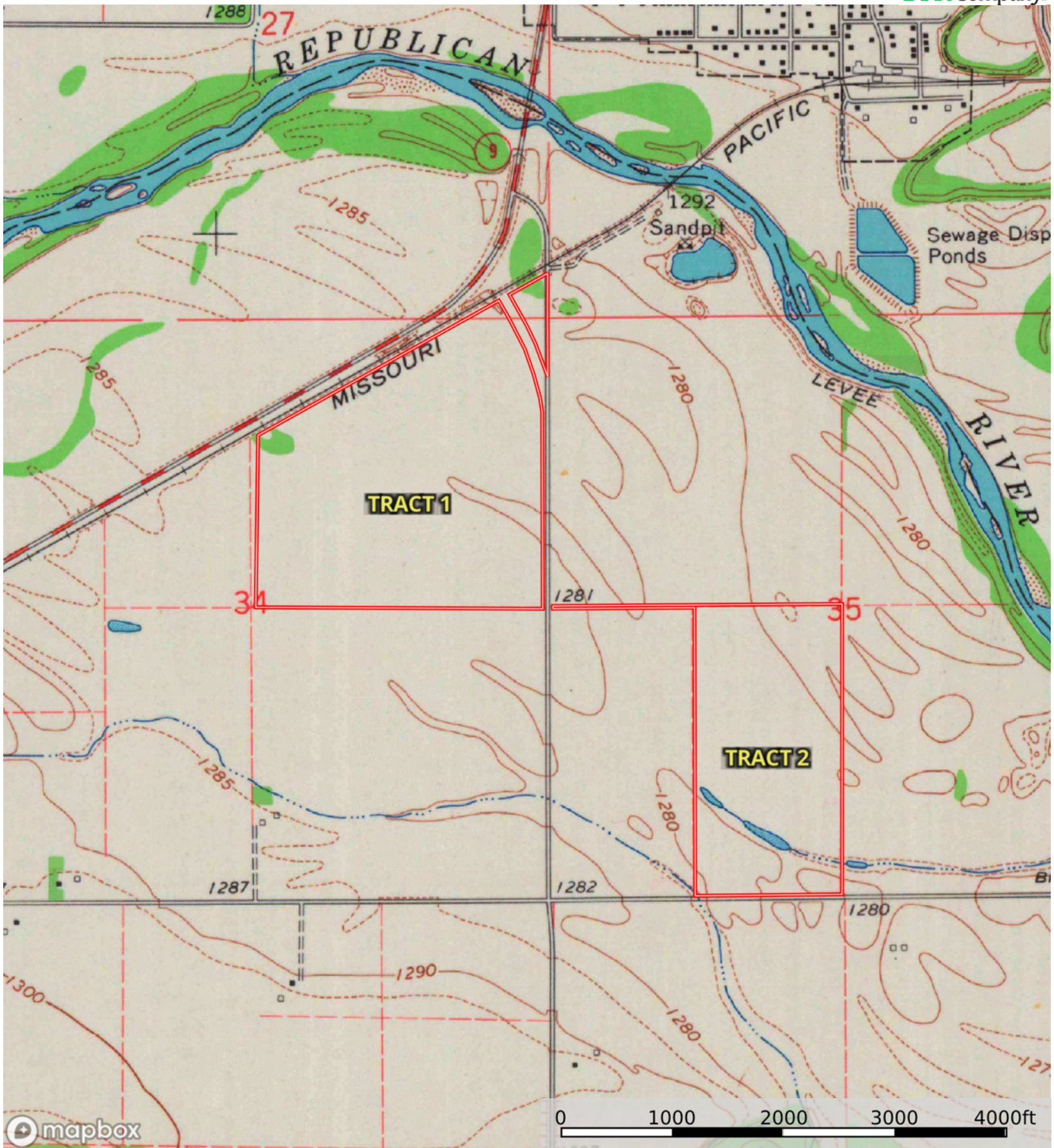
Boundary 80.51 ac

SOIL CODE	SOIL DESCRIPTION	ACRES	%	CPI	NCCPI	CAP
3580	Huscher silt loam, occasionally flooded	62.64	77.79	0	61	2w
2113	Inavale loamy sand, occasionally flooded	7.47	9.28	0	27	3w
3521	Cass fine sandy loam, occasionally flooded	6.31	7.84	0	38	2w
3581	Huscher silty clay loam, occasionally flooded	4.09	5.08	0	67	2w
TOTALS		80.51(*)	100%	-	56.34	2.09

(\*) Total acres may differ in the second decimal compared to the sum of each acreage soil. This is due to a round error because we only show the acres of each soil with two decimal.





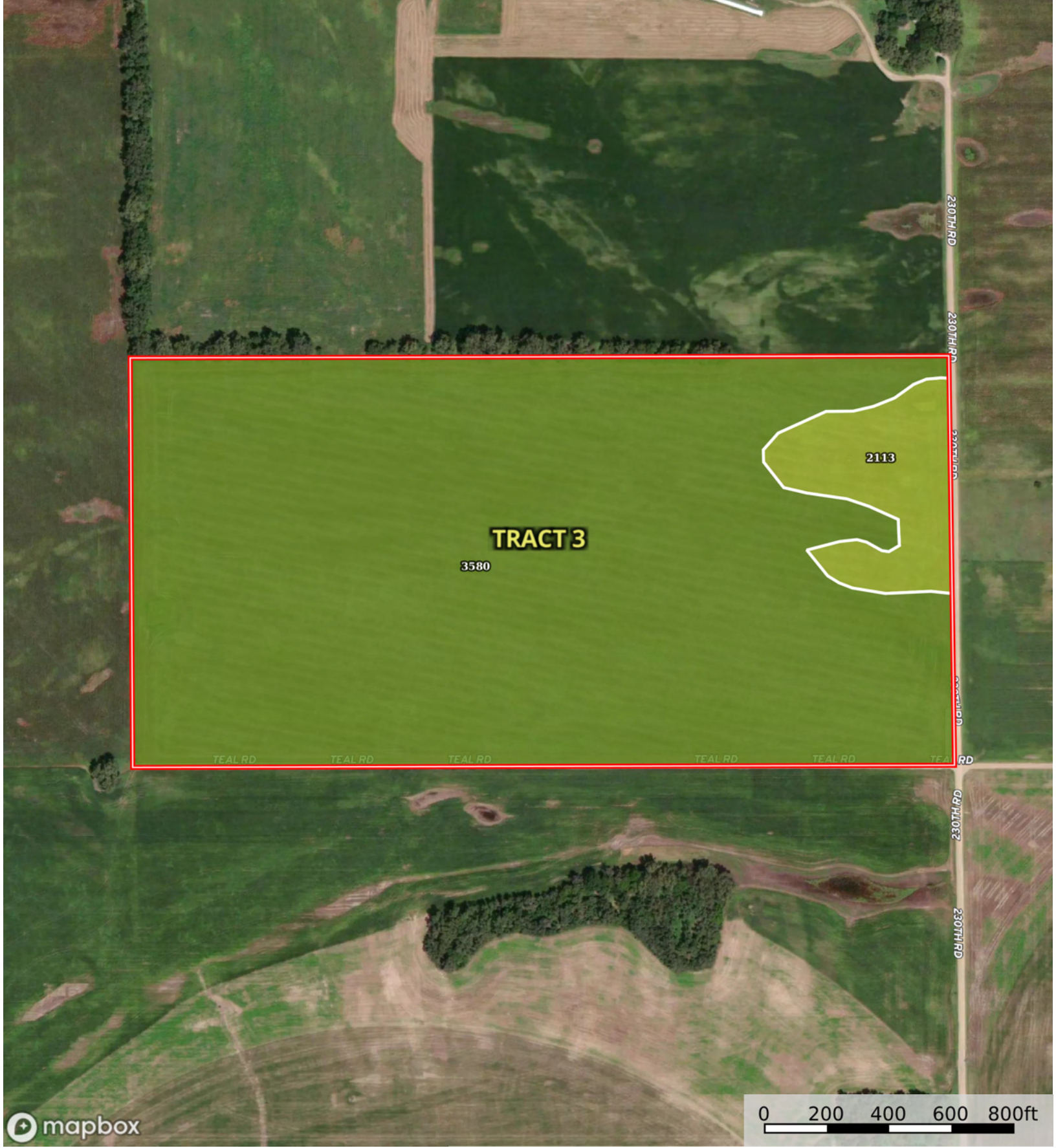


 Boundary

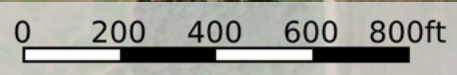


Boundary

0 200 400 600 800ft



Boundary



| Boundary 79.67 ac

SOIL CODE	SOIL DESCRIPTION	ACRES	%	CPI	NCCPI	CAP
3580	Huscher silt loam, occasionally flooded	73.69	92.48	0	61	2w
2113	Inavale loamy sand, occasionally flooded	5.98	7.51	0	27	3w
TOTALS		79.67(*)	100%	-	58.44	2.08

(\*) Total acres may differ in the second decimal compared to the sum of each acreage soil. This is due to a round error because we only show the acres of each soil with two decimal.

**Capability Legend**

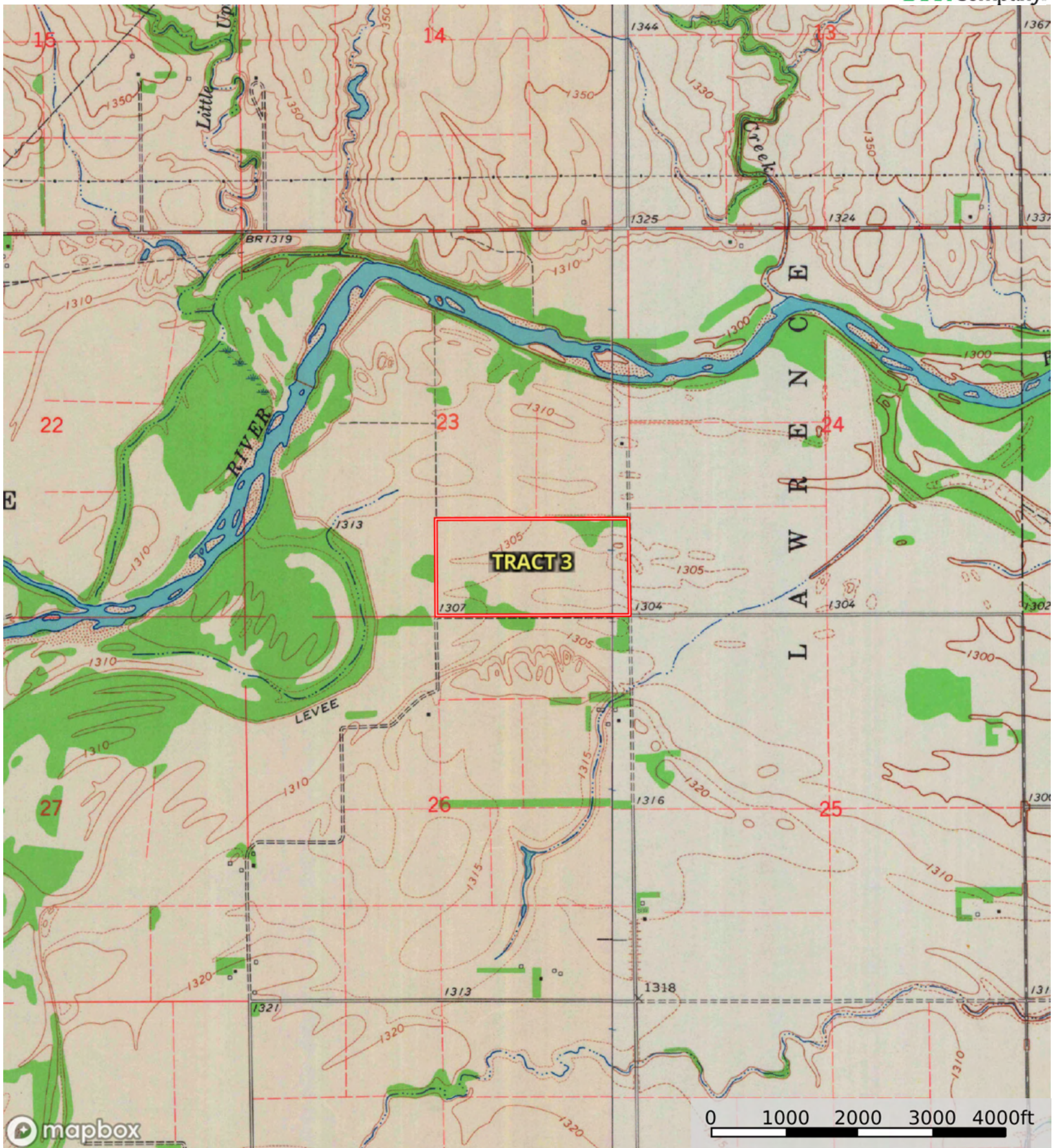
Increased Limitations and Hazards  
Decreased Adaptability and Freedom of Choice Users

Land, Capability

	1	2	3	4	5	6	7	8
'Wild Life'	•	•	•	•	•	•	•	•
Forestry	•	•	•	•	•	•	•	
Limited	•	•	•	•	•	•	•	
Moderate	•	•	•	•	•	•		
Intense	•	•	•	•	•			
Limited	•	•	•	•				
Moderate	•	•	•					
Intense	•	•						
Very Intense	•							

**Grazing Cultivation**

(c) climatic limitations (e) susceptibility to erosion  
(s) soil limitations within the rooting zone (w) excess of water



Boundary