

Boundary



Boundary





Boundary

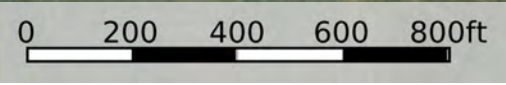
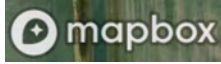


| Boundary 129.54 ac

SOIL CODE	SOIL DESCRIPTION	ACRES	%	CPI	NCCPI	CAP
3580	Huscher silt loam, occasionally flooded	85.94	66.35	0	61	2w
3521	Cass fine sandy loam, occasionally flooded	43.39	33.5	0	38	2w
2113	Inavale loamy sand, occasionally flooded	0.21	0.16	0	27	3w
TOTALS		129.54(*)	100%	-	53.25	2.0

(*) Total acres may differ in the second decimal compared to the sum of each acreage soil. This is due to a round error because we only show the acres of each soil with two decimal.





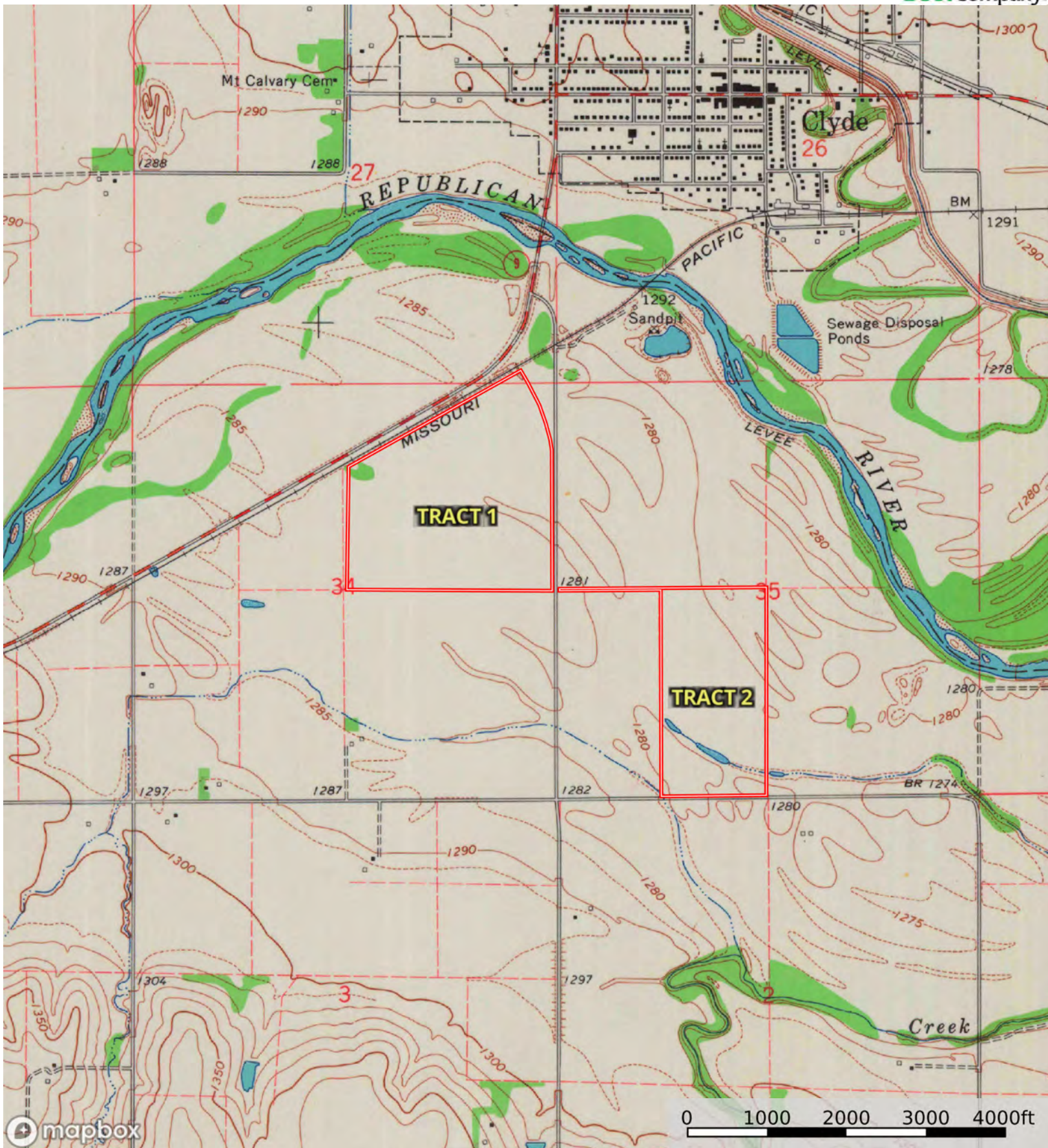
Boundary

| Boundary 80.51 ac

SOIL CODE	SOIL DESCRIPTION	ACRES	%	CPI	NCCPI	CAP
3580	Huscher silt loam, occasionally flooded	62.64	77.79	0	61	2w
2113	Inavale loamy sand, occasionally flooded	7.47	9.28	0	27	3w
3521	Cass fine sandy loam, occasionally flooded	6.31	7.84	0	38	2w
3581	Huscher silty clay loam, occasionally flooded	4.09	5.08	0	67	2w
TOTALS		80.51(*)	100%	-	56.34	2.09

(*) Total acres may differ in the second decimal compared to the sum of each acreage soil. This is due to a round error because we only show the acres of each soil with two decimal.



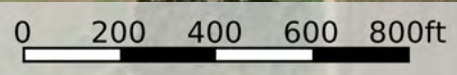


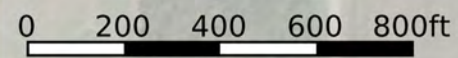
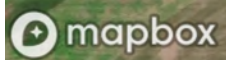
Boundary





Boundary





Boundary

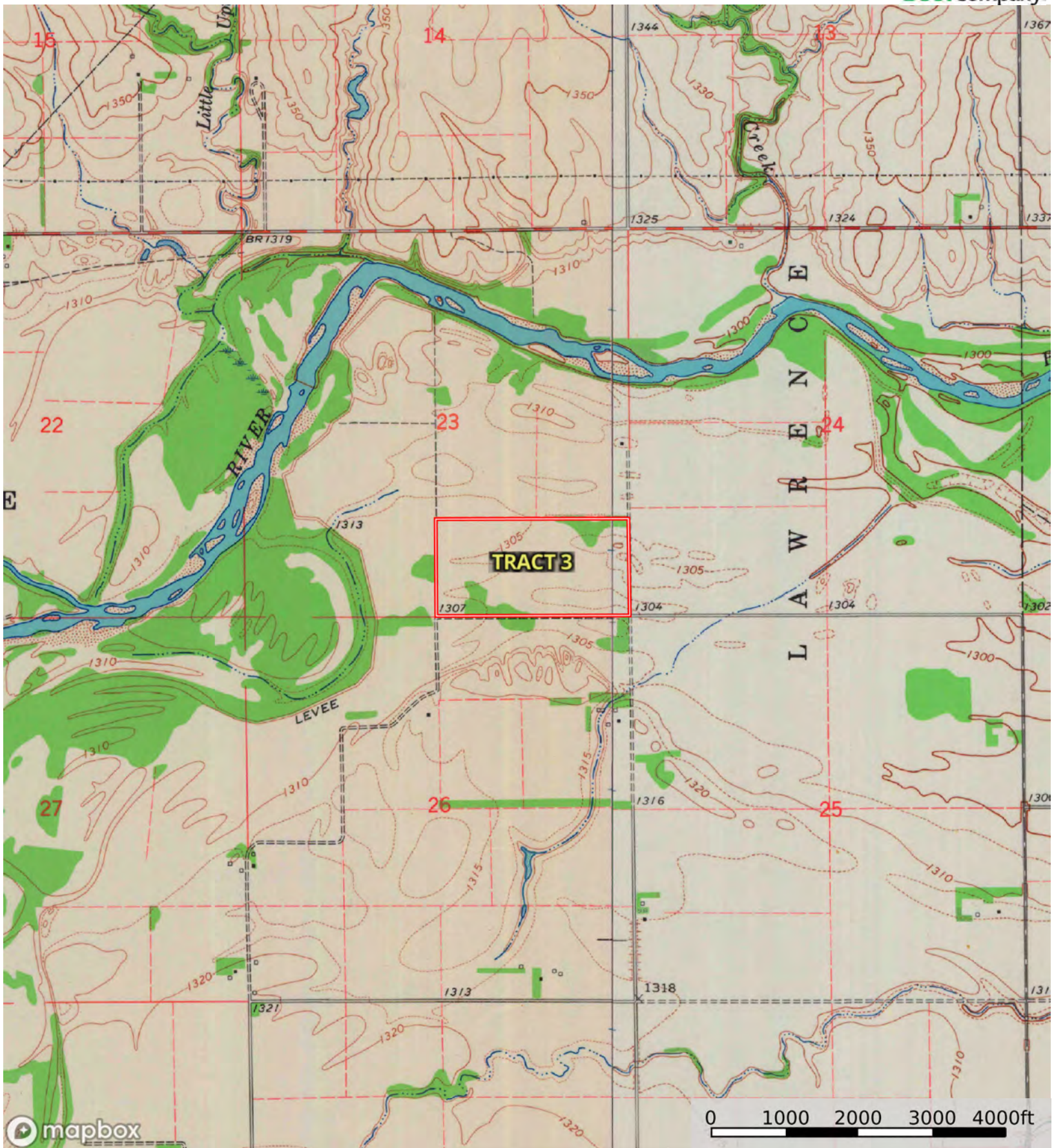


| Boundary 79.67 ac

SOIL CODE	SOIL DESCRIPTION	ACRES	%	CPI	NCCPI	CAP
3580	Huscher silt loam, occasionally flooded	73.69	92.48	0	61	2w
2113	Inavale loamy sand, occasionally flooded	5.98	7.51	0	27	3w
TOTALS		79.67(*)	100%	-	58.44	2.08

(*) Total acres may differ in the second decimal compared to the sum of each acreage soil. This is due to a round error because we only show the acres of each soil with two decimal.





Boundary

